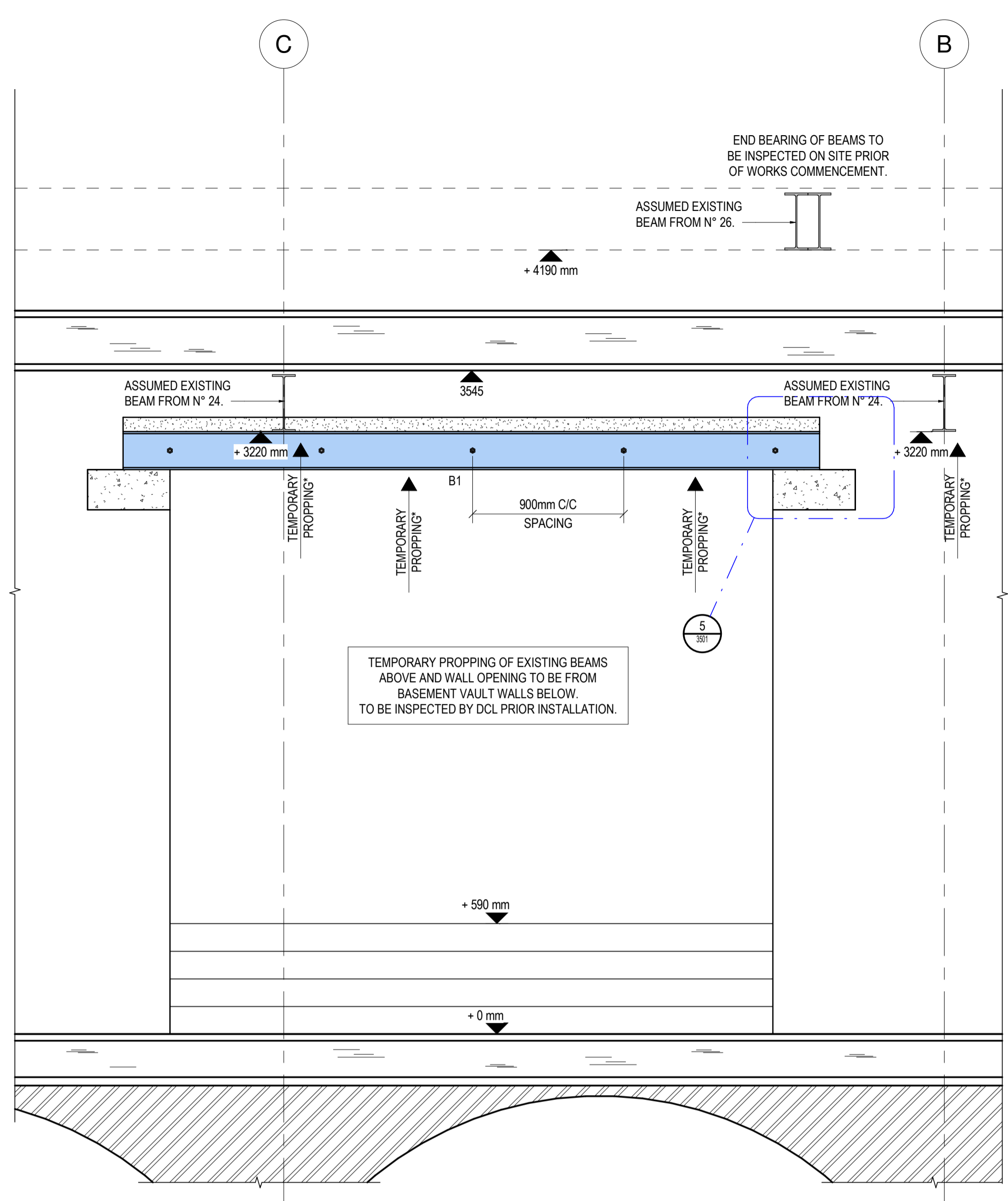
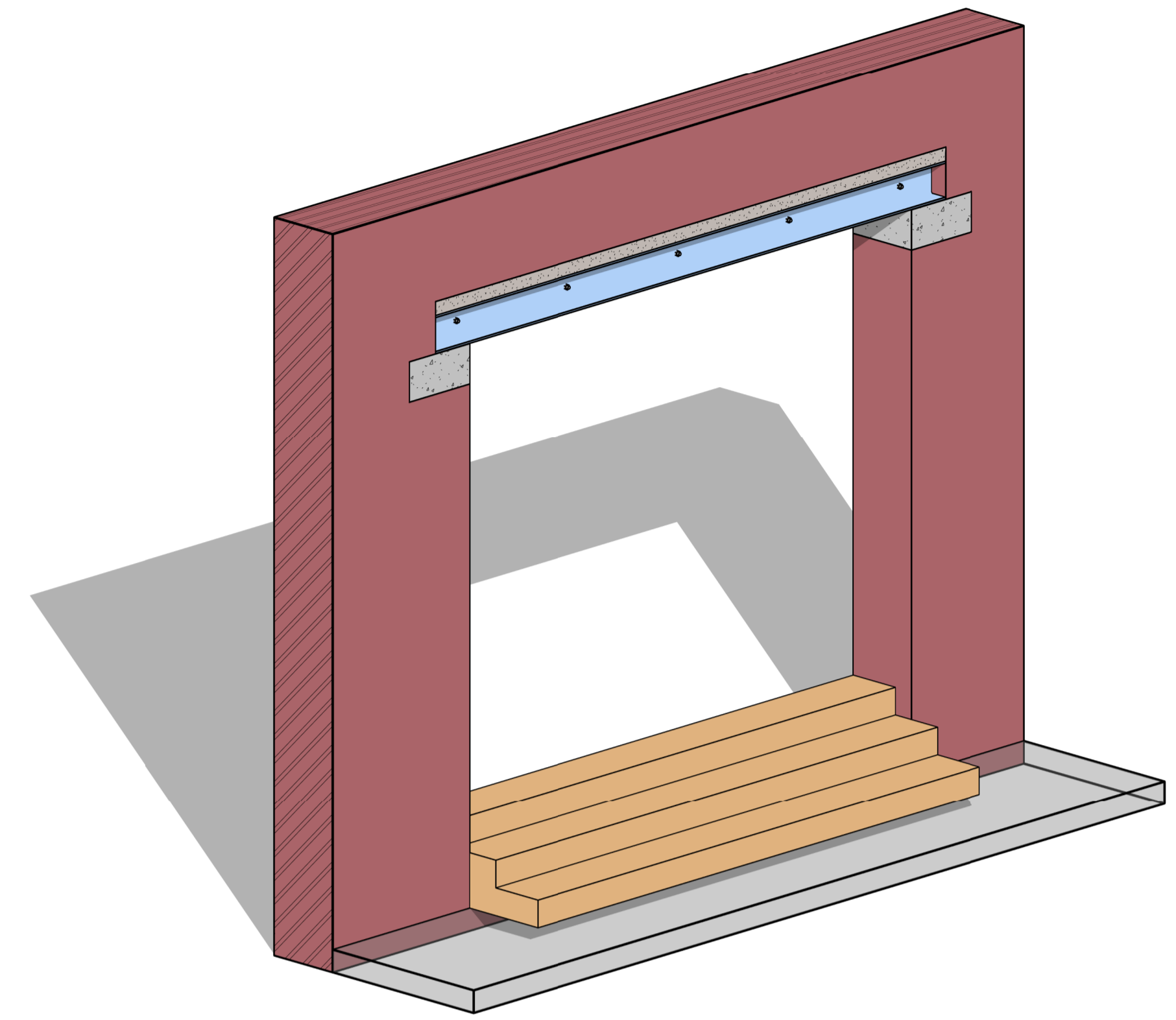


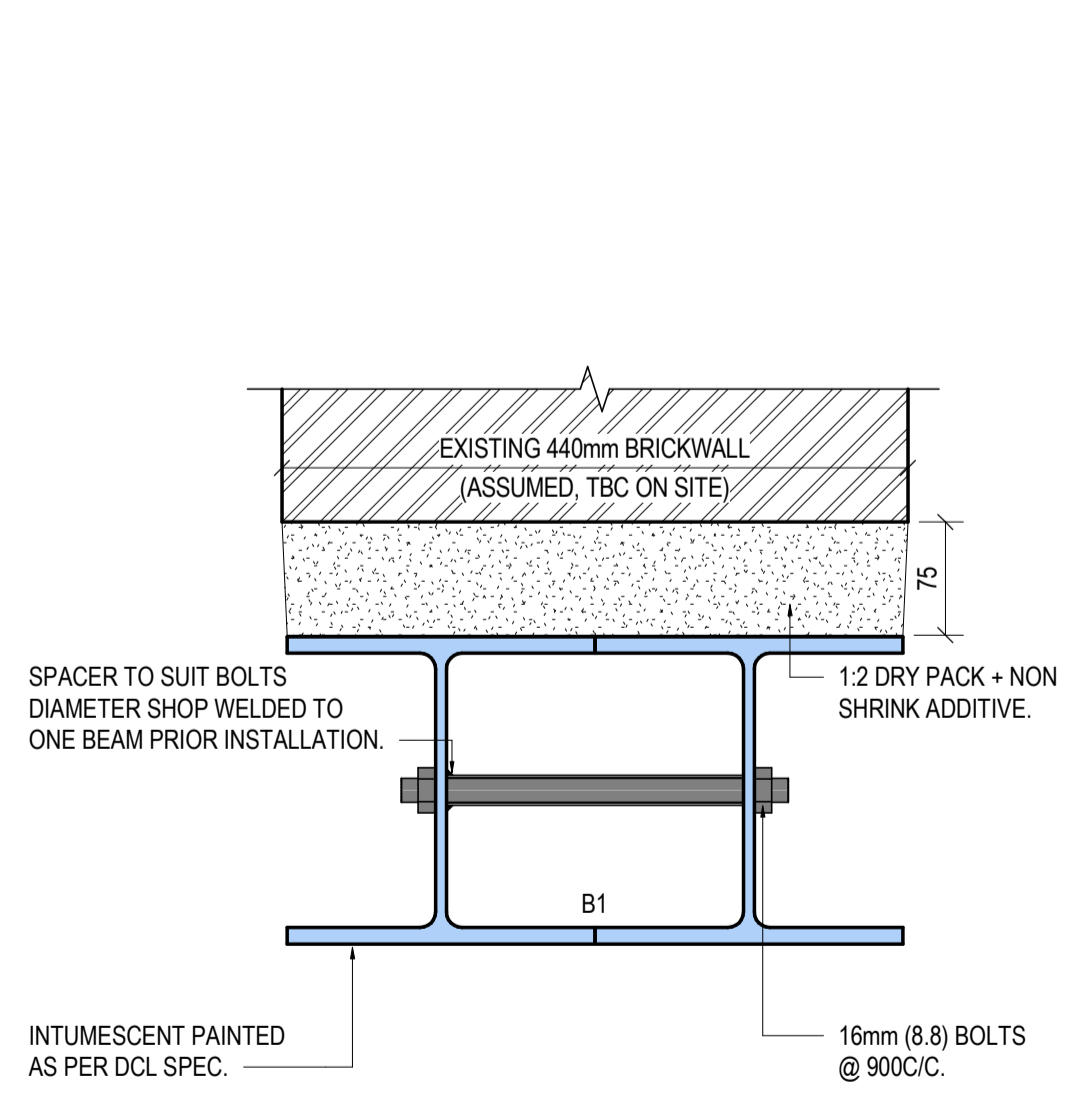
Section 1
SCALE: 1:20



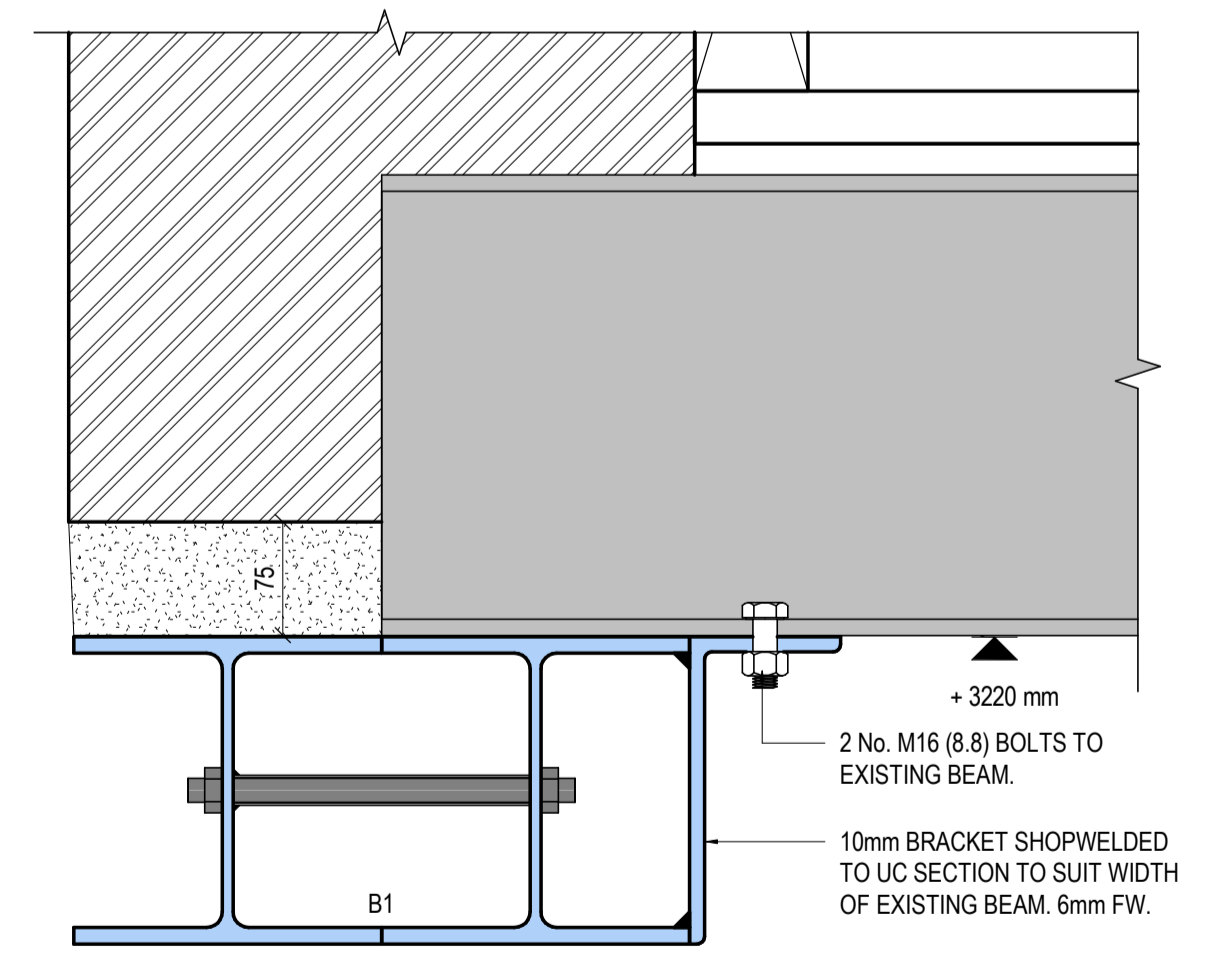
Section 2
SCALE: 1:20



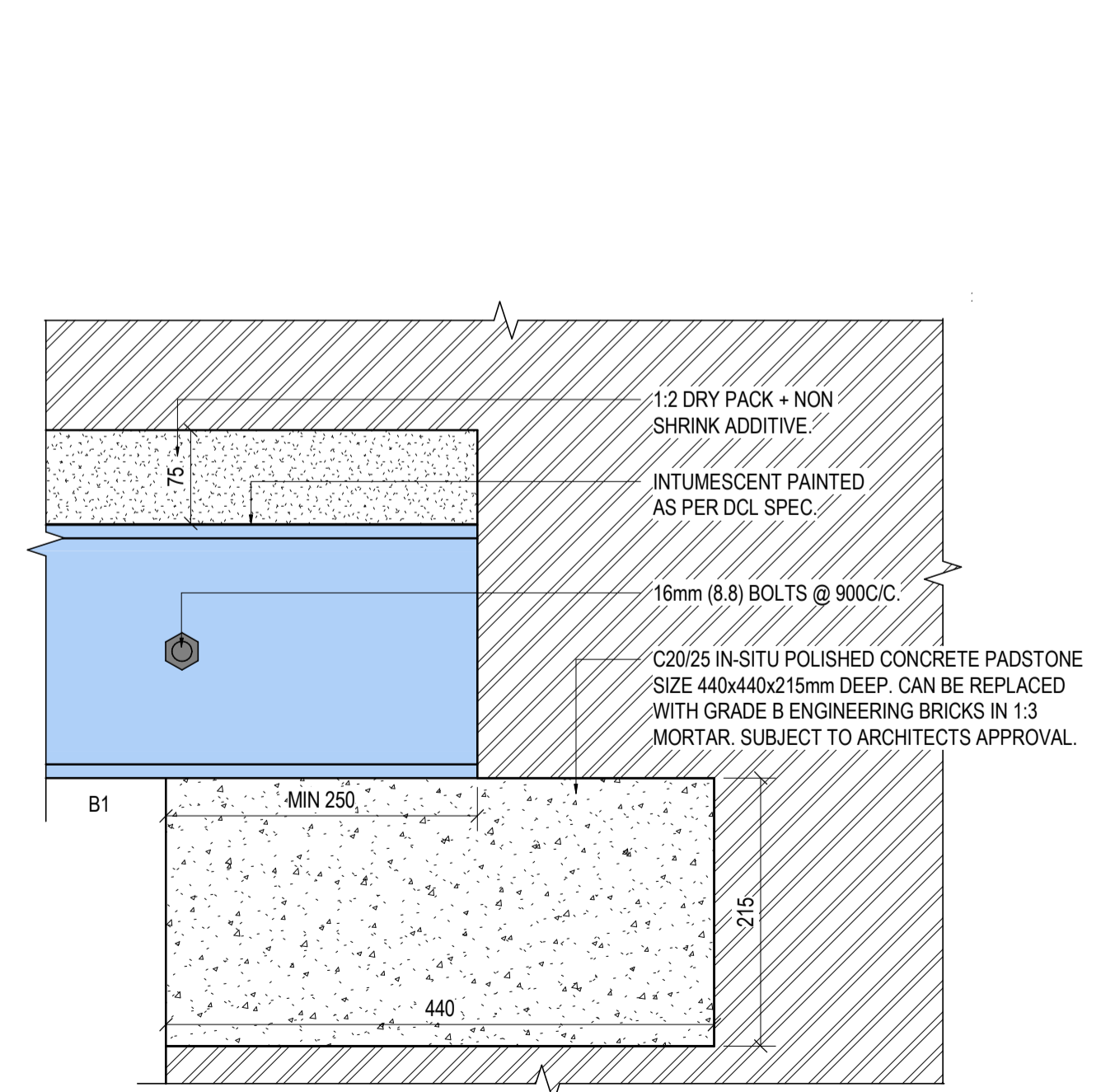
3D View
New Opening



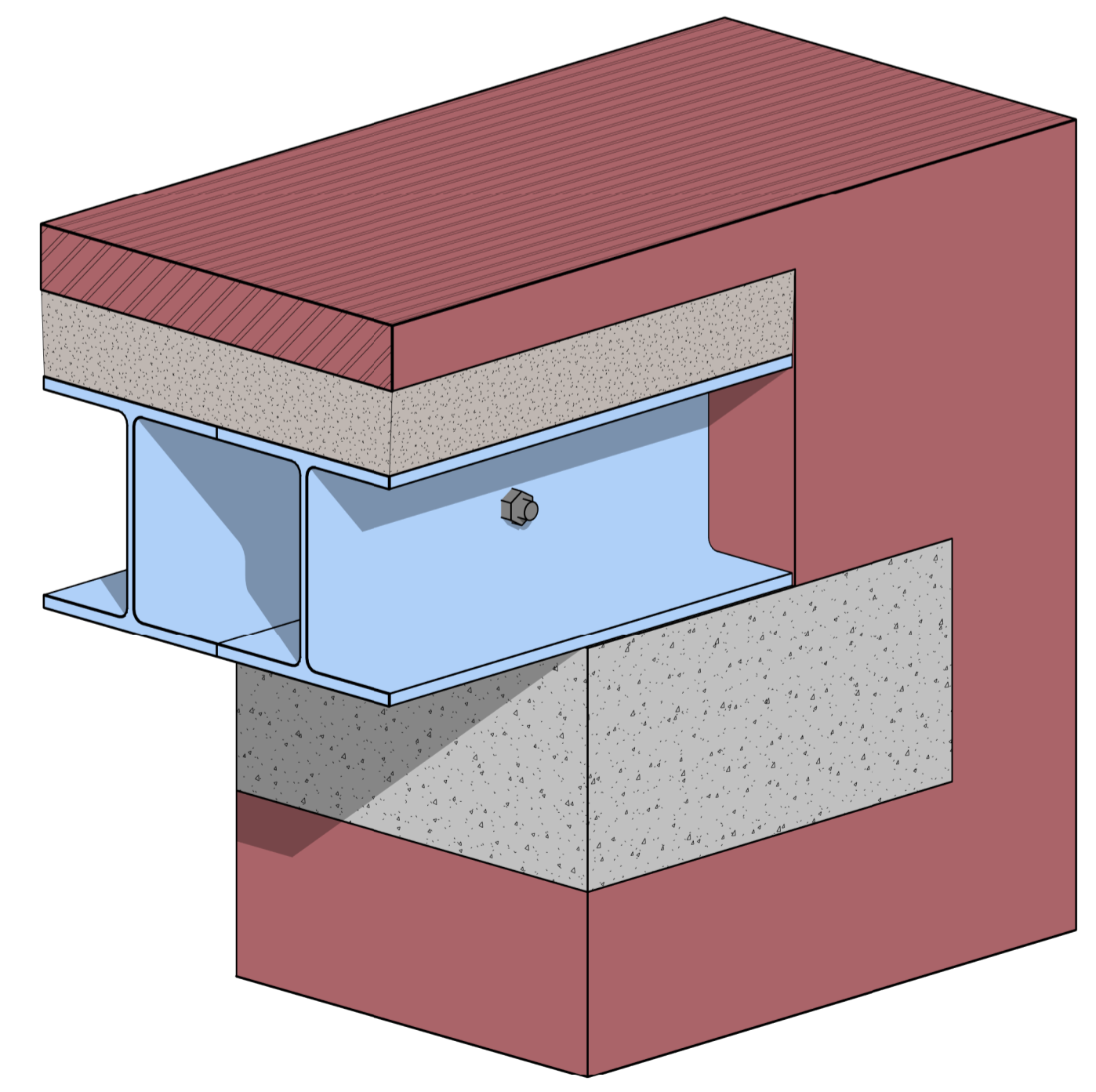
Detail 3
Typical Section Through Beam
SCALE: 1:5



Detail 4
Connection to Existing Beam
SCALE: 1:5



Detail 5
Connection to Padstone
SCALE: 1:5



3D View
Padstone

- Notes**
- All dimensions are in millimetres and levels in metres.
 - This drawing is to be read in conjunction with relevant Architect's and Engineer's drawings and specifications.
 - Do not scale from this drawing in either paper or digital form. Use written dimensions only.
 - The contractor is to verify all dimensions on site before commencing work. All error and omissions are to be reported to the Engineer.
 - All work is to be carried out in accordance with the latest Building Regulations and Codes of Practice.
 - For general notes see General Notes Sheet.

LEGEND	
REF.	DESCRIPTION
---	EXISTING TIMBER FLOOR JOISTS
B1	2 No. 203 UC 46 S275 JO.

Rev.	Date	By	Details Of Revision
P1	15.04.20	SA	Preliminary Issue

Client
The West Street Trustee

Project
24-26 West Street

Title
New Opening Details



PRELIMINARY

Drawn	SA	A1 Scales	As indicated
Date	04/09/20	Eng	AO
Chk	AO	App'd	FB

ACTUAL DIMENSION = 80mm

Project No.	Drawing No.	Rev.
99547	3501	P1