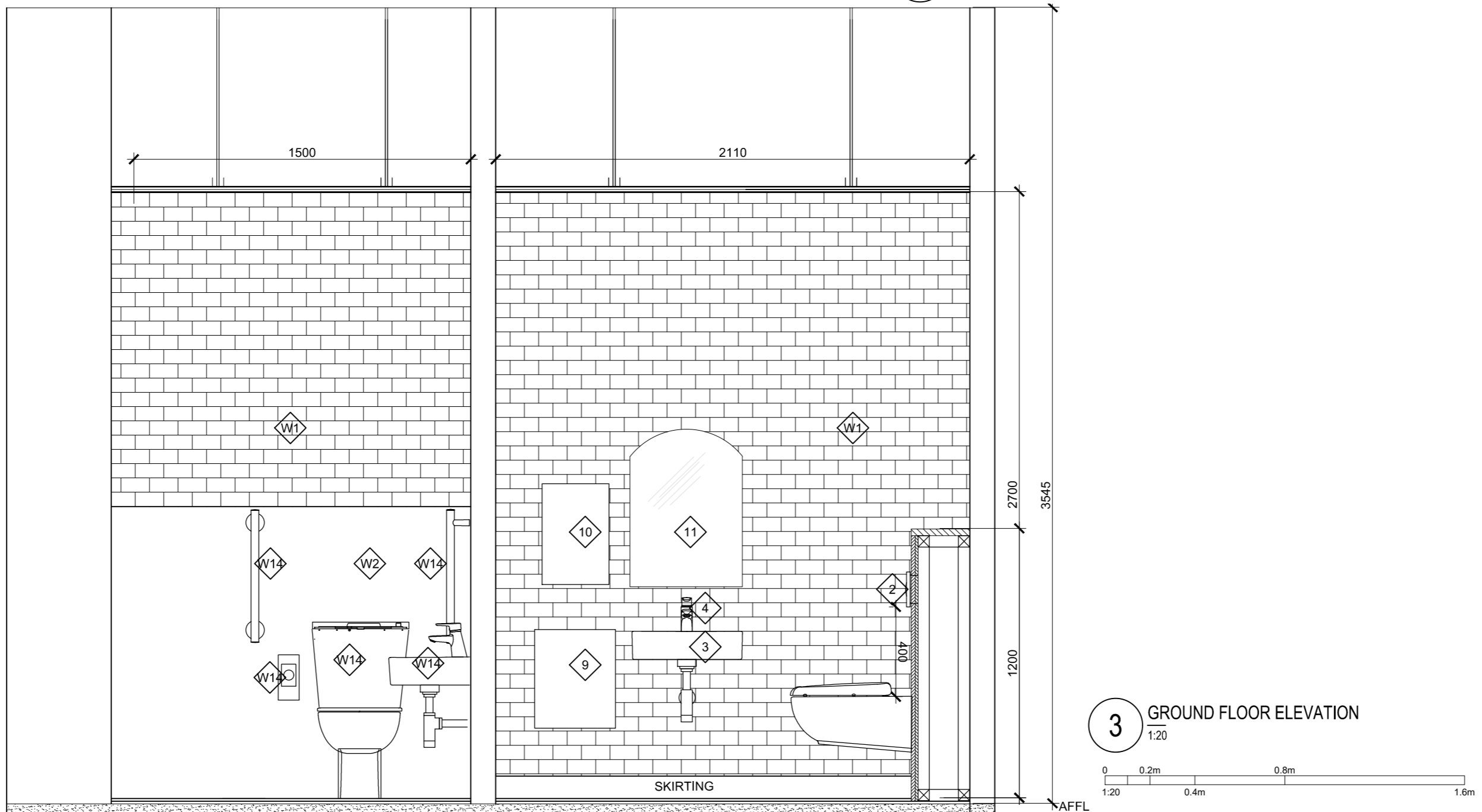


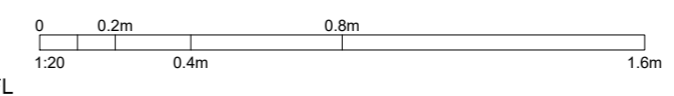
**GROUND FLOOR PLAN**  
1:50

**1 GROUND FLOOR ELEVATION**  
1:20

**2 GROUND FLOOR ELEVATION**  
1:20



**3 GROUND FLOOR ELEVATION**  
1:20



**Finishes**

- W1 EXPOSED EXISTING BRICK
- W2 FORMICA INFINITY LAMINATE F2253 DIAMOND BLACK ABSOLUTE MATTE
- W3 NEW BRICK SLIP MATCH EXISTING
- W4 WHITE TILES DECA 01 GLOSS BY DOMUS WITH WHITE GROUT

**Sanitaryware**

- 1 IDEAL STANDARD WALL MOUNTED TOILET PAN WITH HORIZONTAL OUTLET E0005
- 2 GEBERIT FLUSH PLATE SIGMA30 FOR DUAL FLUSH
- 3 DURAVIT VERO AIR WASHBASIN 072450 500MM X 250MM
- 4 DOLPHIN BASIN TAP WA100
- 5 DOLPHIN SANITARY PEDAL BIN BC981 OPTIONAL NOT FIXED
- 6 DOLPHIN TOILET BRUSH AND HOLDER BRUSHED SATIN FINISH 13.1800
- 7 DOLPHIN LOCKABLE TOILET PAPER DISPENSERS BC267
- 8 SHOWER TRAY 1000MM X 900MM DURAVIT D-CODE IN ANTI-SLIP ACRYLIC ART. 72010700000001. SHOWER SCREEN DURAVIT OPEN SPACE B (H 2000MM) TO SUIT SHOWER TRAY DIMENSIONS MULTI WITH THERMOSTATIC SHOWER MIXER
- 9 DOLPHIN WASTE BIN BC921 STAINLESS STEEL
- 10 DOLPHIN PAPER TOWEL DISPENSER DP3106 BRUSHED SATIN FINISH
- 11 BATHSTORE 535545 WATERTEC ARCHED BATHROOM MIRROR BATHSTORE 500MM X 700MM
- 12 UNION STREET FURNITURE INDRA SPA BENCH GUAREA CEDRATA WOOD L800 X D500 X H450 MM
- 13 DDA TOILET PULL CORD BY CONTRACTOR
- 14 DDA WC IDEAL STANDARTS ARMITAGE SHANKS DOC M CONTOUR 21+ CLOSE COUPLED LEFT OR RIGHT HAND PACS. S0683(AC) WC PAN, BASIN, GRAB RAILS, TOILET ROLL HOLDER, MIXER TAP IN STAINLESS STEEL FINISH
- 15 ARLES FULL HEIGHT MIRROR BY MADE 650MM X 1700MM

MDF SKIRTING BOARDS IN WC'S TO BE PAINTED IN BLACK RAL9005

NOT SPECIFIED WALL FINISHES TO BE PAINTED IN WHITE RAL: 9016

NOTE- WCS: ALL WC PANS TO BE WALL-MOUNTED USING QUALITY FIRING AND CONCEALED CISTERN SYSTEMS SUCH AS GEBERIT SIGMA/DUOFIX. CISTERN BUILD-OUT TO HAVE METSEC OR SOFTWOOD FRAMING WITH MARINE PLY BOXING. SHELF ABOVE TO BE READILY REMOVABLE FOR ACCESS TO PLUMBING BELOW.

SHOWERS - COORDINATE PARTITION DIMENSIONS TO ALLOW FOR TILE BACKER, AND FOR TILING TO SIT ABOVE THE SHOWER TRAY. JUNCTIONS TO BE SEALED USING HIGH QUALITY ANTI-MOULD SILICONE SEALANT. TILING -TILE GROUT TO BE 3MM, COLOURS TO BE SELECTED PRIOR TO INSTALL.

CLIENT

---

STRUCTURAL ENGINEER

---

SERVICES ENGINEER

---

CONSULTANT

---

KEY PLAN

---

NOTES:

THIS DRAWING IS PROTECTED BY COPYRIGHT.

ALL AREAS HAVE BEEN MEASURED FROM CURRENT DRAWINGS. THEY MAY VARY BECAUSE OF (EG) SURVEY, DESIGN DEVELOPMENT, CONSTRUCTION TOLERANCES, STATUTORY REQUIREMENTS OR RE-DEFINITION OF THE AREAS TO BE MEASURED.

1 FLOOR FINISH

TOILETS/SHOWERS  
DECHIRER LA SUITE DTDL 04 NET BY DOMUS  
594MM X 594MM X 12MM

STAIRCASE  
NON SLIP PAINT - ARMSTEAD TRADE ANTI-SLIP BY DULUX  
COLOUR 'YELLOW'

FLOOR FINISH OPEN SPACE  
HAYWOODS FENDI 13 ENGINEERED EUROPEAN OAK SANDED, UV  
OILED, T&G, BEVELLED EDGE

2 WALL FINISH

EXPOSE EXISTING BRICKWORK (END WALLS)

EXPOSE PLASTERWORK/ BRICKWORK (COLUMNS)

TOILETS/SHOWERS WHITE TILES DECA 01 GLOSS BY DOMUS  
%6P

No.	Date	Comment	Drawn	Chk'd
I1	08.04.20	ISSUE FOR PLANNING	MV	NAN

Revisions

Issue Status

## INFORMATION

**tp bennett**  
architecture  
interiors  
planning

One America Street London SE1 ONE UK +44 (0) 20 7208 2000 www.tpbenett.com

Project  
**24-25 WEST STREET  
REFURBISHMENT**

Drawing Title  
**TOILET LAYOUTS  
& ELEVATIONS 1**

Drawn	Date	Scale @ A2	Alt. Ref.
GP	23.03.2020	VARIABLES	--

tp bennett Project No. **D5596** Drawing Number **D 2300** Rev **11**