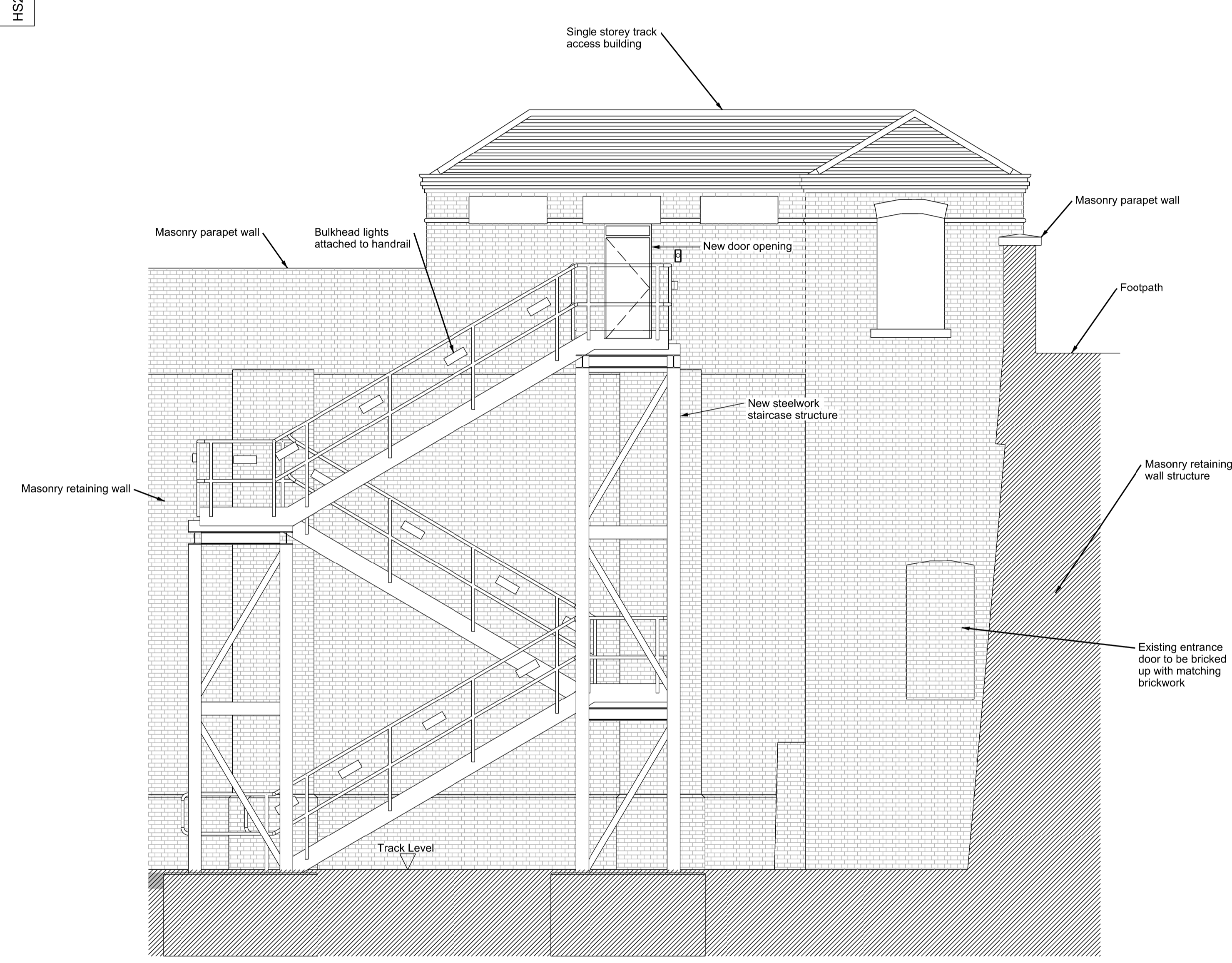
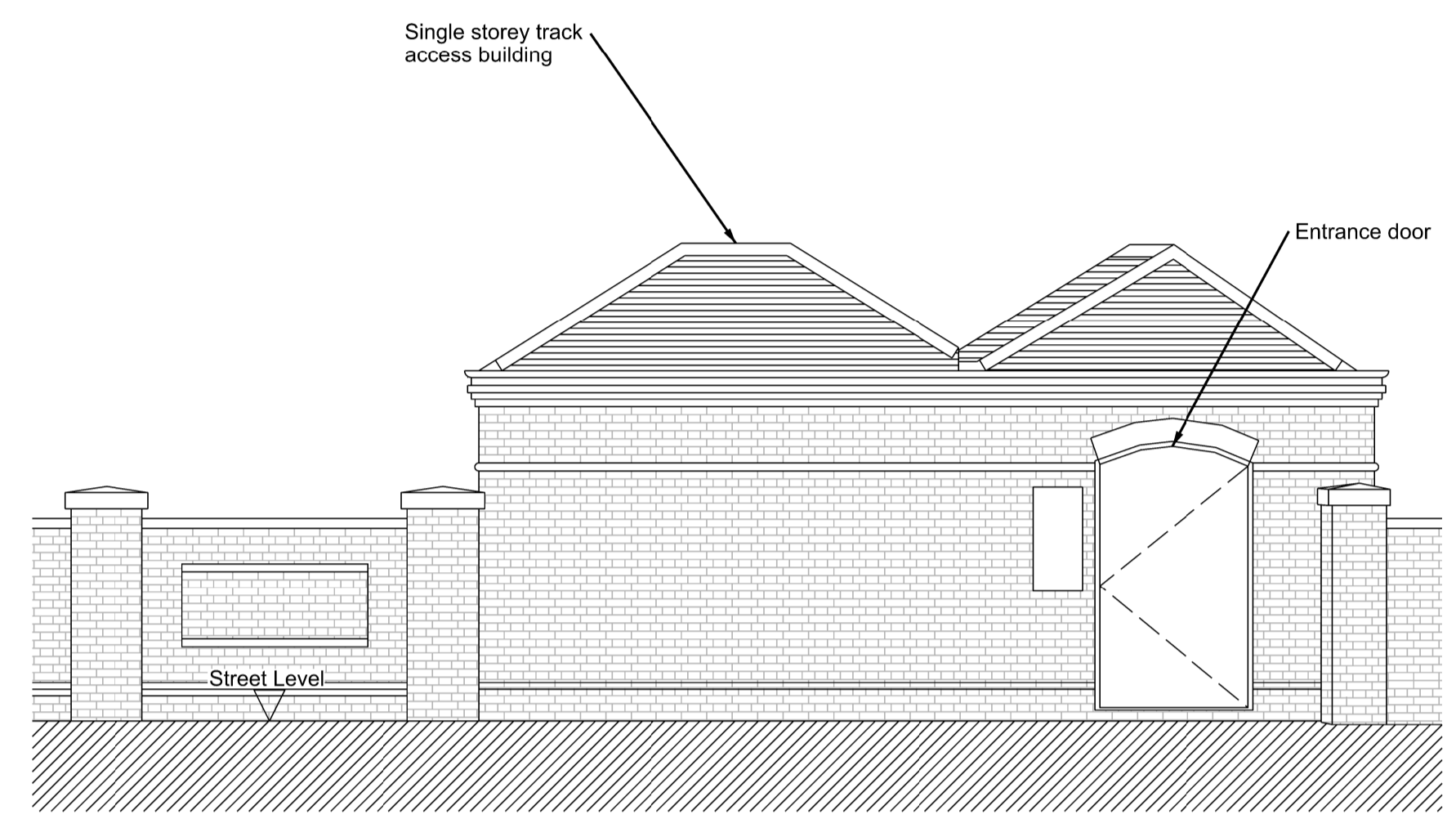


Legend/Notes
 1. Do not scale from this drawing.
 2. All dimensions are in millimetres unless stated otherwise.



A-A
Elevation from Tracks
1:50



B-B
Existing Street Elevation
1:50

Rev	Date	Description of Revisions	Drawn	Chkd	Appr	Suitability
P01	05/11/18	For Planning Approval				S2



Authorised: _____ Signed: Electronically Signed Date: _____

Contractor(s)
AECOM Ltd

Asset Location
Location

Sub-Asset

Type
CAD Drawing

Sub-Type
Section

Role
Civil Engineer

Sub-Role
General

Location Zone
LONDON EUSTON - RUGBY TRENT VALLEY JCN

Phasing
Proposed

Grip Stage
4

Withdrawn

Project
HS2 On-Network Works

Contract No.
158085

Contract Title
Euston Existing Assets Model

Drawing Title
Track Access Point

Adjacent to

58 Mornington Terrace

Proposed Sections

Designed
C. Chong
Signed: Electronically Signed
Date: 01/11/18

Drawn
N.Thompson
Signed: Electronically Signed
Date: 05/11/18

Checked
P.Paymani
Signed: Electronically Signed
Date: 05/11/18

Approved
C.Chong
Signed: Electronically Signed
Date: 05/11/18

Scale(s)
As Shown
ELR & Mileage
LEC1 83.0495 To From
-0.0066

Alternative Reference
Sheet of
Drawing Number
HS2_158085-3125-LEC1-ZN18-DDR-C-150008
Revision
P01

OS map data reproduced by permission of Ordnance Survey on behalf of HMSO. © Crown copyright 2016. All rights reserved. Ordnance Survey licence number 010040892

