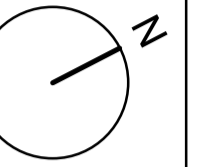


General Notes:

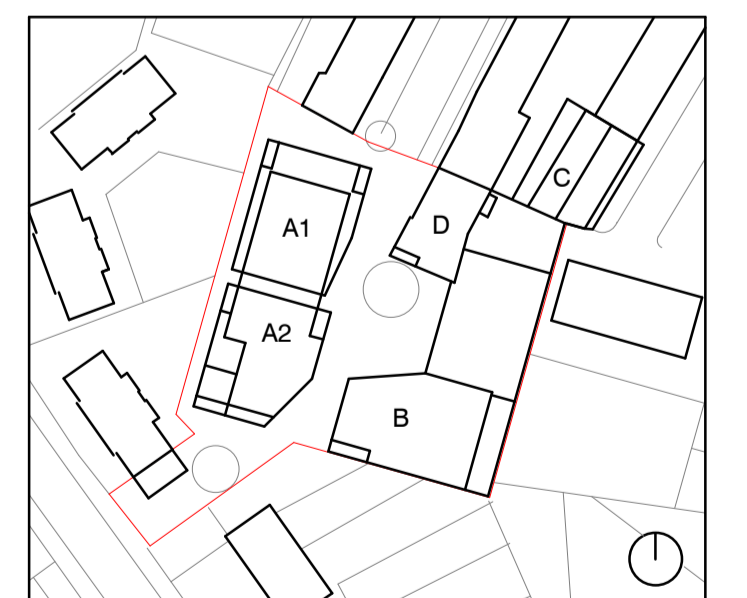
- Do not scale from this drawing.
- All dimensions to be checked on site by the Contractor.
- And such dimensions to be their responsibility.
- Report all drawing errors and omissions to the Architect.
- All dimensions in millimetres unless noted otherwise.
- If in doubt ask the Architect/Contract Administrator.
- All fixed furniture drawn is for guidance only. Refer to separate drawings and schedules.
- Details and workmanship to ensure acoustic and fire requirements are achieved, where relevant. For guidance refer to acoustician's and fire consultants information.
- Details and workmanship to ensure thermal, air tightness and waterproofing requirements are achieved, where relevant. For guidance refer to service engineer for specifications.
- This drawing is to be read in conjunction with all other relevant drawings and specifications by the architect, structural engineer and services engineer.



Drawing Notes:

P1 14.02.2020 Tender Issue

Revision	Date	Description



rcka
 29-31 Cowper St
 London
 EC2A 4AT
 T +44 (0) 20 7831 7002
 W www.rcka.co.uk

job title
 HIGHGATE NEWTOWN COMMUNITY CENTRE
 drawing title/location
 BLOCK C - ROOF PLAN - AS PROPOSED

scale	1 : 50 @ A1
suitability	status description D2 - For Tender

job no	originator	zone	level	type	role	dwg no	revision
HNCC - RCK - 07 - RF - DR - A - 71002							P1