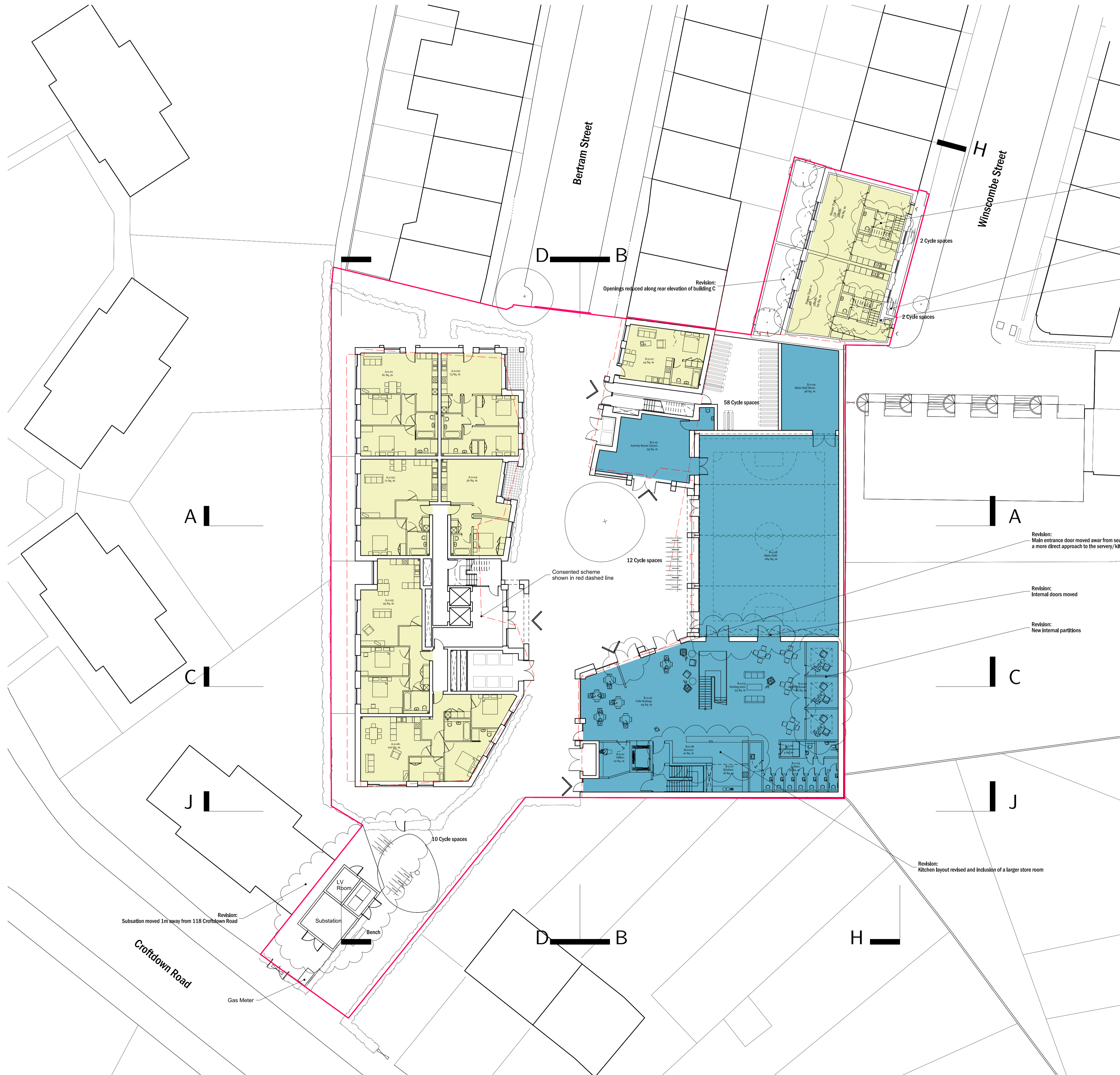


Planning



Revision:
Revised internal layout to create a larger kitchen

Building C:
Secure cycle storage in front gardens

Revision:
Revised internal layout to create a larger kitchen

Revision:
Main entrance door moved away from seating area to provide a more direct approach to the servery/kitchen and avoid drafts

Revision:
Internal doors moved

Revision:
New internal partitions

Revision:
Kitchen layout revised and inclusion of a larger store room

Revision description	Date	Init	Rev
Amended Layout	31.03.20	AB	R
Amended Layout	11.03.19	AB	Q
Revised Planning	02.11.18	AB	P

rcka 28-31 Cowper Street London EC2A 4AT T +44 (0) 20 7631 7002 F +44 (0) 20 7660 1940 W www.rcka.co.uk		Title Site Plan As Proposed
Project Camden HNCC/FYA	Client Camden Council	Date 26.01.2016
Drawn by AB	Checked DK	Scale 1:200@A1
Job No 1415	Drawn by PL-GA-ST-800	Revision R

©2016 RCKA. This drawing is not to be scaled - use written dimensions only. Any discrepancies to be reported to the architect. All dimensions to be checked on site.