

Luminaire Schedule		
Layout	Luminaire Description	Image
	Holophane Denver Elite LED Bollard 12W 815m 4000K DEB.NAJP.L014.PAY.DO.H75.C7.C.MCB.X132.X133 750mm Bollard	
	Holophane Denver Elite LED Bollard 12W 815m 4000K DEB.NAJP.L014.PAY.DO.H75.C7.C.MCB.X132.X133.P172 750mm Bollard - 2 MCB Cut-outs for ground mounted luminaire spur.	
	Holophane Platek Ground Mounted Luminaire Medio Roll Over 1 Finestra (HIT-CE 35W - G12) 1 x '00'	
	Holophane Platek Ground Mounted Luminaire Medio Roll Over 1 Finestra (HIT-CE 35W - G12) 1 x '00'	
	Holophane Platek Ground Mounted Luminaire Medio Roll Over 1 Finestra (HIT-CE 35W - G12) 8131081 - With a requested 5m fly cable	
	Holophane Platek Ground Mounted Luminaire Medio Roll Over 1 Finestra (HIT-CE 35W - G12) 8131081 - With a requested 15m fly cable	

Rev	Date	Description of Revisions	Drawn	Chkd	Appr	Submittal
C01	11/08/18	For AFC Submission	FR	PR	SM	
P04	27/08/18	TG Circuit Alterations Road 2	FR	SM	SM	
P05	21/12/18	For AFC Submission	FR	SM	SM	
C02	21/12/18	For AFC Submission	FR	SM	SM	

Fit for Construction

Authorised: C.Pannell
Signed: Electronically Signed
Date: 21/12/18

Contractor: **AECOM Ltd**

Asset Location: LONDON EUSTON - RUGBY TRENT VALLEY JCN
Proposed Project: 5 Wilmslow

HS2 On-Network Works
Contract No: 157926
Contract Title: Camden Carriage Extension
Drawing Title: Camden Carriage Sidings Final Works Site Plan E&P LV & Lighting

Designed	Checked	Approved	Scale(s)	Alternative Reference
F. Roberts	S. Mlakala	S. Mlakala	1:100	HS2_157926-3125-LEC1-ZN19-DRR-E-030101

Signed	Date
Electronically Signed	26/01/18
Electronically Signed	21/12/18
Electronically Signed	21/12/18
Electronically Signed	21/12/18
Electronically Signed	21/12/18

Scale(s): 1:100
Alternative Reference: HS2_157926-3125-LEC1-ZN19-DRR-E-030101
Drawing Number: HSE_157926-3125-LEC1-ZN19-DRR-E-030101
Sheet: 1 of 3
Revision: C02

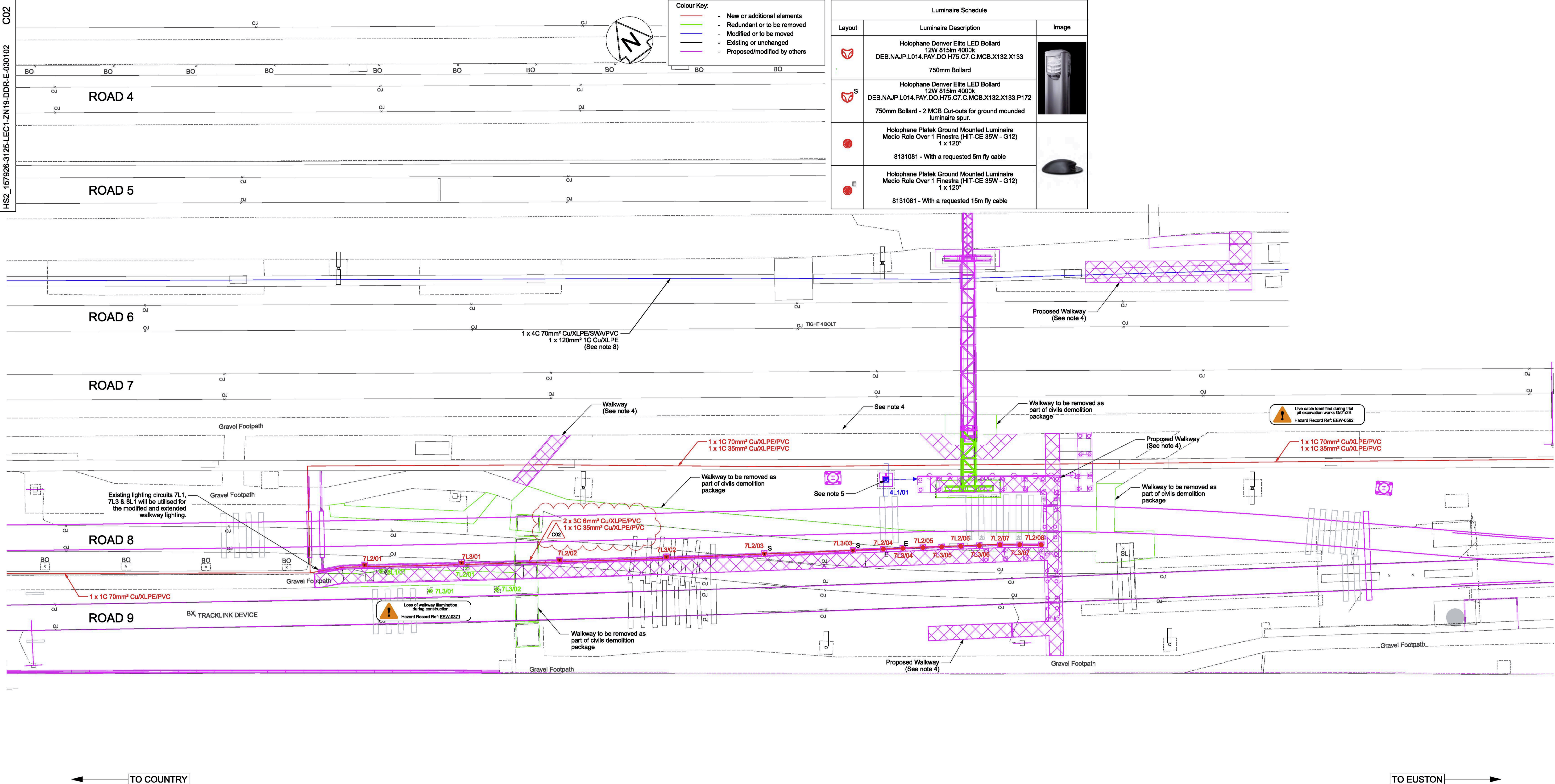
Drawing Number
HS2_157926-3125-LEC1-ZN19-DDR-E-030102

C02

Colour Key:

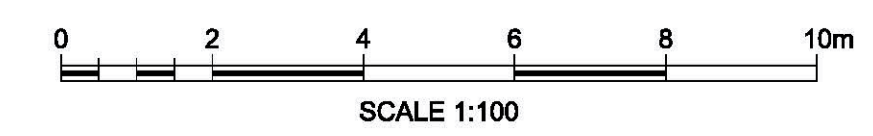
- - New or additional elements
- - Redundant or to be removed
- - Modified or to be moved
- - Existing or unchanged
- - Proposed/modified by others

Luminaire Schedule		
Layout	Luminaire Description	Image
	Holophane Denver Elite LED Bollard 12W 815lm 4000k DEB.NAJP.L014.PAY.DO.H75.C7.C.MCB.X132.X133 750mm Bollard	
	Holophane Denver Elite LED Bollard 12W 815lm 4000k DEB.NAJP.L014.PAY.DO.H75.C7.C.MCB.X132.X133.P172 750mm Bollard - 2 MCB Cut-outs for ground mounded luminaire spur.	
	Holophane Platek Ground Mounted Luminaire Medio Role Over 1 Finestra (HIT-CE 35W - G12) 1 x 120°	
	Holophane Platek Ground Mounted Luminaire Medio Role Over 1 Finestra (HIT-CE 35W - G12) 1 x 120° 8131081 - With a requested 5m fly cable	
	Holophane Platek Ground Mounted Luminaire Medio Role Over 1 Finestra (HIT-CE 35W - G12) 1 x 120° 8131081 - With a requested 15m fly cable	



← TO COUNTRY

TO EUSTON →



Legend/Notes

P03	27/09/18	For AFC Submission	FR	PR	SM
C01	27/09/18	For AFC Submission	FR	PR	SM
P04	21/12/18	For AFC Submission	FR	SM	SM
C02	21/12/18	For AFC Submission	FR	SM	SM
Rev	Date	Description of Revisions	Drawn	Chkd	Appr
Status					Submittal

Fit for Construction A



Authorised: C.Pannell Signed: Electronically Signed Date: 21/12/18

Contractor(s)
AECOM Ltd
Asset Location
Location
Sub-Asset
Type
CAD Drawing
Sub-Type
Plan
Role
Electrical Engineer
Sub-Role
General
Location Zone
LONDON EUSTON - RUGBY TRENT VALLEY JCN
Phase
Proposed
Grip Stage
5
Withdrawn

HS2 On-Network Works
Contract No.
157926
Contract Title
Camden Carriage Extension
Drawing Title
Camden Carriage Sidings
Final Works Site Plan
E&P LV & Lighting

Designed	F. Roberts	Signed	Electronically Signed	Date	29/01/18
Drawn	F. Roberts	Signed	Electronically Signed	Date	21/12/18
Checked	S.Mulakala	Signed	Electronically Signed	Date	21/12/18
Approved	S.Mulakala	Signed	Electronically Signed	Date	21/12/18
Scale(s)	1:100	To	ELR & Misingage	From	-0.0066

Alternative Reference
HS2_139278-3125-LEC1-ZN19-DDR-E-030102
Drawing Number
HS2_157926-3125-LEC1-ZN19-DDR-E-030102
Sheet
2 of 3
Revision
C02

Published

Published

Published

Published

Published

Published

Published

Published

Sheet Size A1+1 594 x 1051