

**External Door Type EX-1**  
Steel doorset with glazed opener and metal side panel

**DOOR-001**  
Emergency Escape from Stair 1  
Ground Floor

Door to be Fail Safe with automatic opening in the event of a fire

- Oval cylinder (manual lock)
- Access control to suit M&E requirements
- 'Push to Exit' pad internally
- Flush pull externally
- Concealed hold open automatic door closer
- Hinges to manufacturer's specification
- Security Alarm contact

**External Door Type EX-2**

**DOOR-002**  
Main Entrance door to Reception  
Ground Floor

Door to be Fail Safe with automatic opening in the event of a fire  
Automatic opening double leaf with manual override function

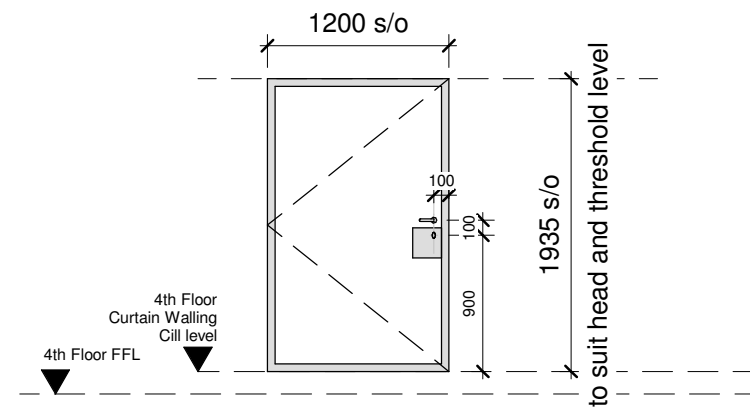
- Oval cylinder (manual lock)
- Access control to suit M&E requirements
- 'Push to Exit' pad internally
- Flush pull externally
- Concealed hold open automatic door closer
- Hinges to manufacturer's specification
- Security Alarm contact

**External Door Type EX-5**

**DOOR-005**  
Emergency Escape from Stair 3  
Ground Floor

Door to be Fail Safe with automatic opening in the event of a fire

- Oval cylinder (manual lock)
- Access control to suit M&E requirements
- Pull handle internally / push plate externally
- Concealed hold open automatic door closer
- Hinges to manufacturer's specification
- Security Alarm contact



**External Door Type EX-6**

**DOOR-006**  
Door from Lounge onto Terrace  
Fourth Floor

Door to be integrated into curtain walling system at 4th floor lounge

- Oval cylinder (manual lock)
- Access control to suit M&E requirements
- Lever handles internally / externally
- Concealed closer
- Hinges to manufacturer's specification
- Security Alarm contact

**NOTES**

- To be read in conjunction with drawing G0642-GIB-00-GF-PL-A-2011- Ground Floor Envelope Setting Out
- All finishes to be Anodised Aluminium, colour to be confirmed.

**Access**

- External doors to ground floor to be LPS 1175 SR3 Rating
- Access Control requirements to be reviewed by M&E
- Security, fire alarm, access control and power assisted door requirements to be coordinated with M&E and Fire Safety Consultant
- All wiring to be concealed within frame
- Allow for statutory signage to all designated fire doors (PPC stainless steel finish).

**Ironmongery**

- Lever handles and pull handles to be straight with mitred corners
- Doors shall be installed with a suitable lock barrel and a sacrificial Oval Cylinder in the door. Clients locksmith will replace the barrel with suited lock on appropriate College key suited lock.

**NOTE**

- Glazing manifestation zones shown are minimum zones for compliance with Part K, allow for Client's bespoke manifestation
- To be read in conjunction with drawing G0642-GIB-00-GF-PL-A-2011- Ground Floor Envelope Setting Out



| REV | DESCRIPTION   | DATE     | DRAWN | AUTH | REV | DESCRIPTION | DATE | DRAWN | AUTH |
|-----|---|----------|-------|------|-----|-------------|------|-------|------|
| P01 | PRELIMINARY ISSUE   | 02.09.19 | IR    | KC   |     |             |      |       |      |
| C01 | CONSTRUCTION ISSUE - DOOR-001 Updated to incorporate dry riser inlet. | 10.03.20 | IR    | KC   |     |             |      |       |      |

© Copyright of the information is vested in Gibberd Ltd.

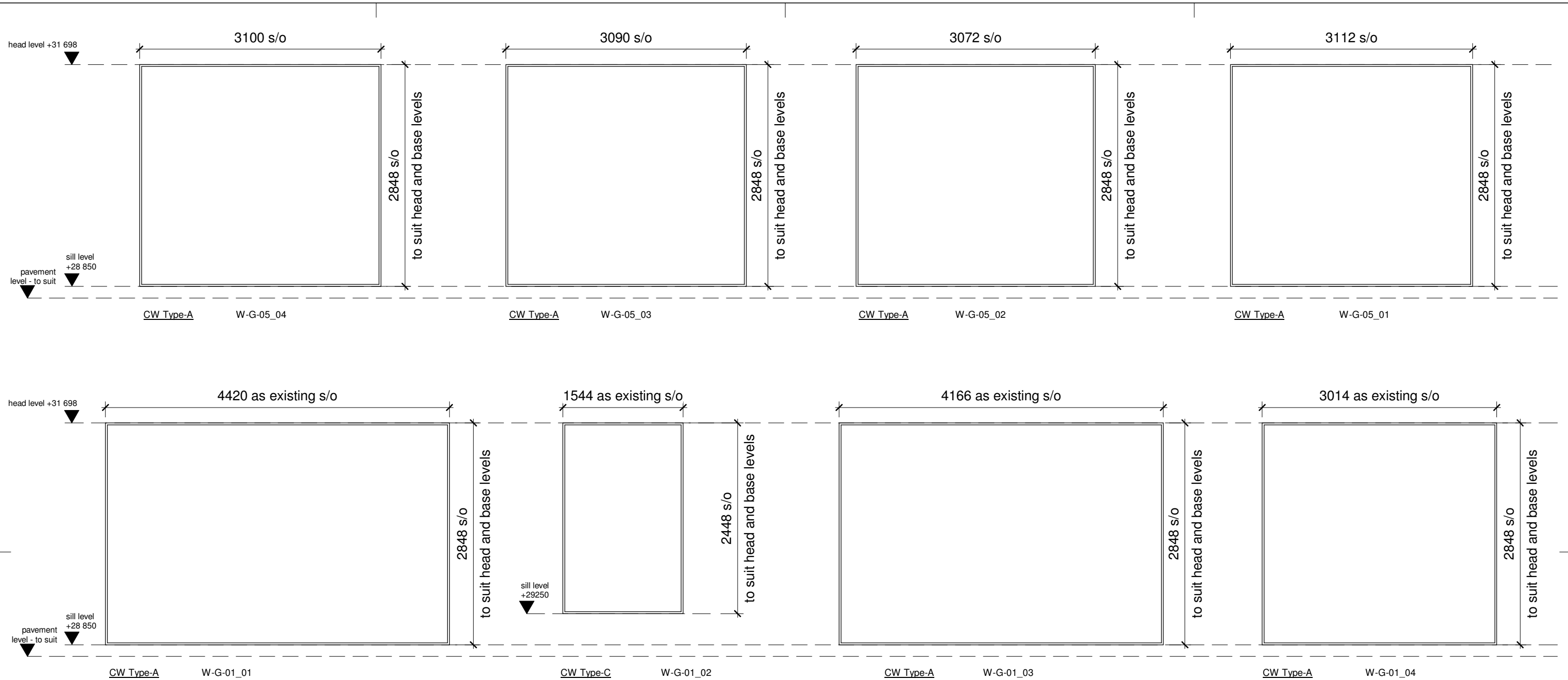
Do not scale from the drawing, work to figured dimensions only. All dimensions are to be checked on site. For the avoidance of any doubt, all dimensions are measured to wall structure and not finishes unless otherwise stated.



t: 020 7739 3400  
f: 020 7739 8948  
w: www.gibberd.com  
e: studio@gibberd.com

117-121 Curtain Road  
London EC2A 3AD

|  |                    |                            |
|--|--------------------|----------------------------|
| Client: ARJ Construction Ltd                                     |                    | Internal Project No: G0642 |
| Project: Cambridge House   |                    | Suitability: S3            |
| Title: External doors in Curtain Walling - Ground & Fourth Floor |                    |                            |
| Series: (32) DOORS   | Date: 02/09/19     | Scale (A3): 1 : 50         |
| Job No: G0642  | Originator: GIB 00 | Zone: ZZ                   |
| Level: EL  | Type: A            | Number: 3221               |
| Drawn: IR  | Reviewed: IR       | Auth: KC                   |
| Status: PRELIMINARY  | Rev: C01           |                            |



**NOTE**

- Glazing manifestation zones to comply with Part K, allow for Client's bespoke manifestation
- To be read in conjunction with drawing G0642-GIB-00-GF-PL-A-2011- Ground Floor Envelope Setting Out

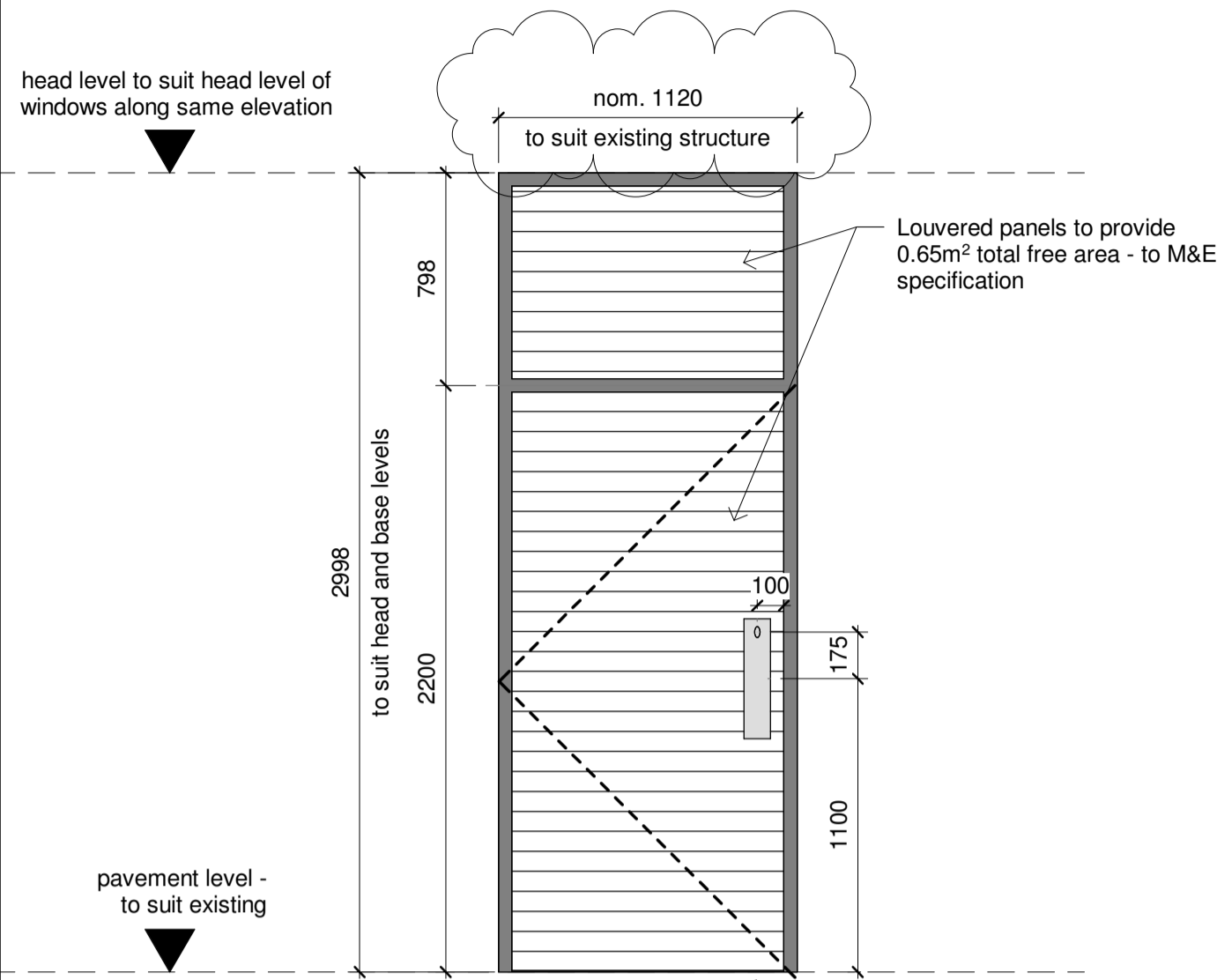


| REV | DESCRIPTION  | DATE     | DRAWN | AUTH | REV | DESCRIPTION | DATE | DRAWN | AUTH |
|-----|--|----------|-------|------|-----|-------------|------|-------|------|
| P01 | PRELIMINARY ISSUE  | 17.07.19 | IR    | KC   |     |             |      |       |      |
| P02 | External glazed door units omitted - sheet to show fixed glazing only. | 02.09.19 | IR    | KC   |     |             |      |       |      |
| C01 | CONSTRUCTION ISSUE   | 14.02.20 | IR    | KC   |     |             |      |       |      |
|     |  |          |       |      |     |             |      |       |      |
|     |  |          |       |      |     |             |      |       |      |
|     |  |          |       |      |     |             |      |       |      |
|     |  |          |       |      |     |             |      |       |      |
|     |  |          |       |      |     |             |      |       |      |

© Copyright of the information is vested in **Gibberd** Ltd.  
 Do not scale from the drawing, work to figured dimensions only. All dimensions are to be checked on site. For the avoidance of any doubt, all dimensions are measured to wall structure and not finishes unless otherwise stated.

**gibberd**  
limited  
 t: 020 7739 3400  
 f: 020 7739 8948  
 w: www.gibberd.com  
 e: studio@gibberd.com  
 117-121 Curtain Road  
 London EC2A 3AD

|                                     |                    |                            |
|-------------------------------------|--------------------|----------------------------|
| Client: ARJ Construction Ltd        |                    | Internal Project No: G0642 |
| Project: Cambridge House            |                    | Suitability: S3            |
| Title: Ground Floor Curtain Walling |                    |                            |
| Series: (31) CURTAIN WALLING        | Date: 17/07/19     | Scale (A3): 1 : 50         |
| Job No: G0642                       | Originator: GIB 00 | Level: GF                  |
| Type: EL                            | Role: A            | Number: 3103               |
| Drawn: IR                           | Reviewed: KC       | Auth: KC                   |
| Status: CONSTRUCTION                | Rev: C01           |                            |



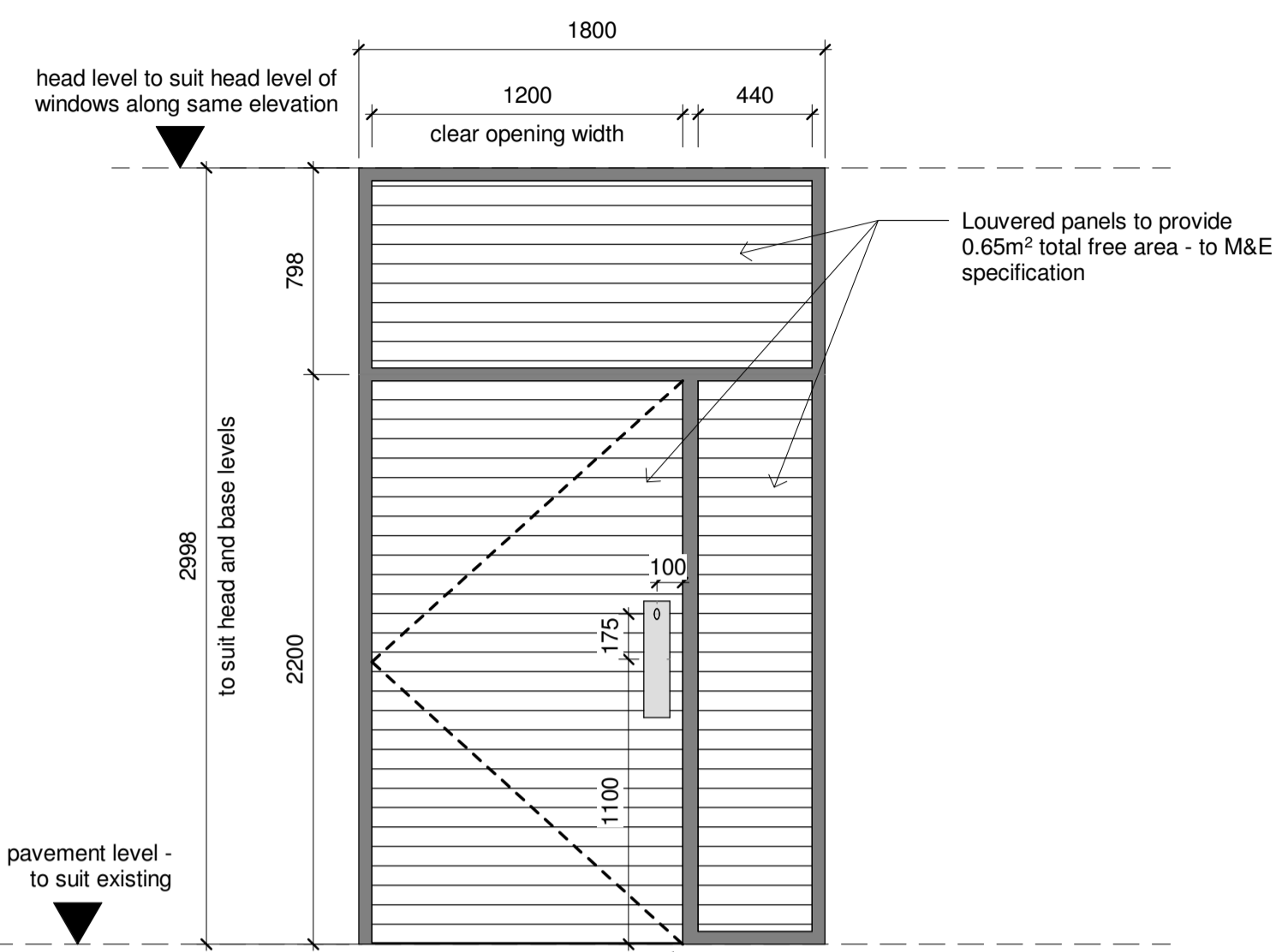
**External Door Type EX-3**

**Door DOOR-003**  
Door to Bike Store  
Ground Floor

Metal Louvered to suit specification

- Oval cylinder (manual lock)
- Access control to suit M&E requirements
- Push plate externally / pull handle internally
- Hinges to manufacturer's specification
- Concealed closer
- Security Alarm contact

a weatherseal threshold is required to seal the doors



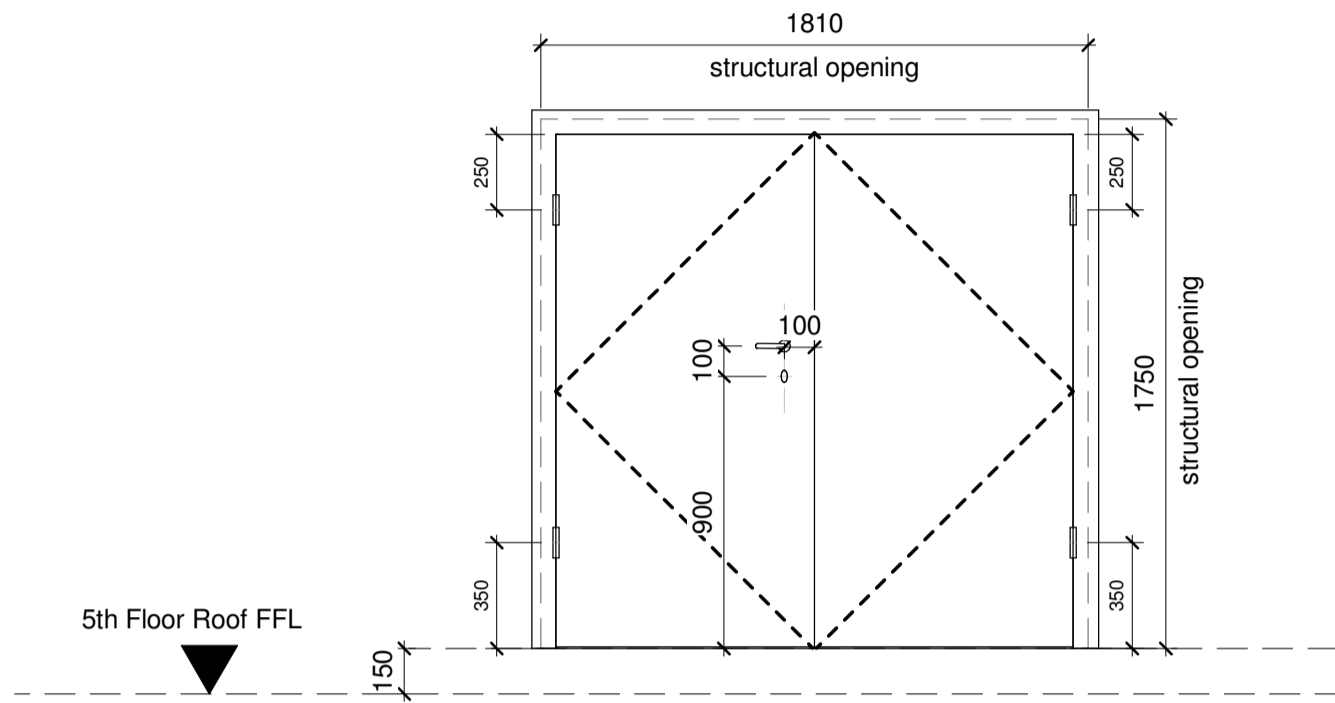
**External Door Type EX-4**

**Door DOOR-004**  
Door to Bin Store  
Ground Floor

Metal Louvered to suit specification

- Oval cylinder (manual lock)
- Access control to suit M&E requirements
- Push plate externally / pull handle internally
- Hinges to manufacturer's specification
- Concealed hold open closer - manual
- Security Alarm contact

a weatherseal threshold is required to seal the doors

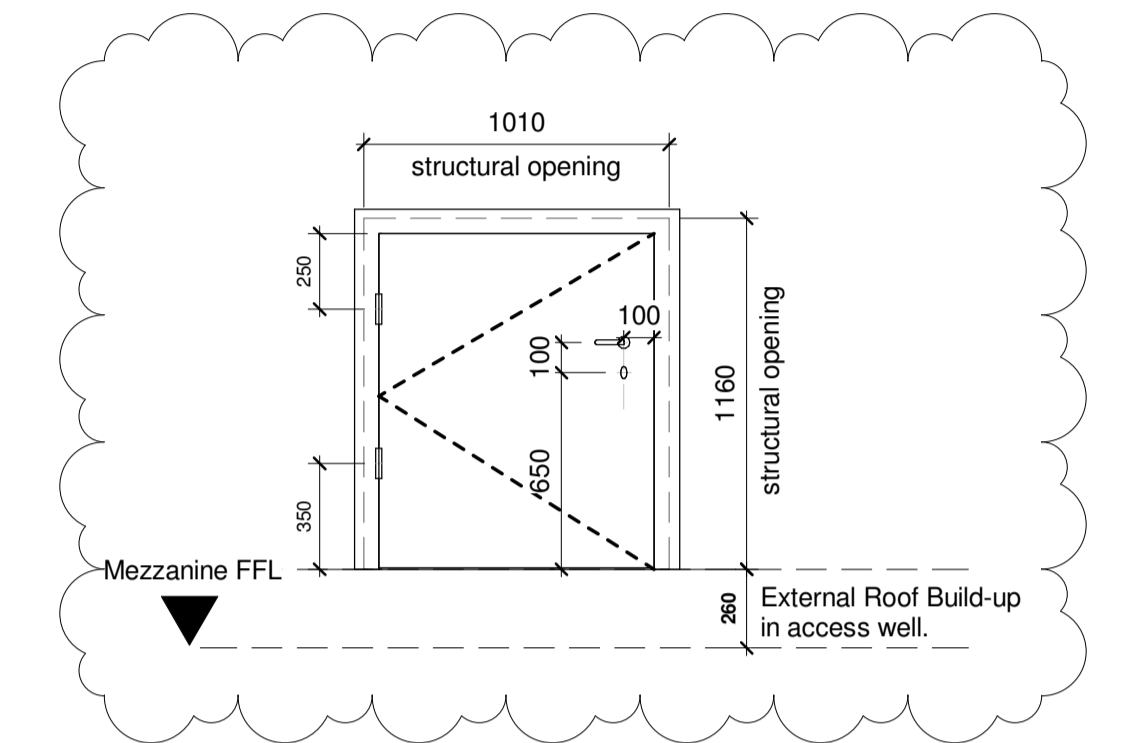


**External Door Type EX-7**

**Door DOOR-007**  
Door to External Plant  
5th Floor

Door height to suit overhead services  
Handing of Active Leaf / Slave Leaf TBC

- Oval cylinder (manual lock)
- 1 pair Lever handles (internal/external) to Active Leaf
- Flush bolt lever action to Slave Leaf
- Hinges to manufacturer's specification
- Concealed closer
- Security Alarm contact
- "Fire Door Keep Locked" signage



**External Door Type EX-8**

**Door DOOR-008**  
Door from Mezzanine Plant Room to Roof  
Mezzanine Floor

Door height to suit overhead services

- Oval cylinder (manual lock)
- 1 pair Lever handles (internal/external) to Active Leaf
- Hinges to manufacturer's specification
- Concealed closer
- Security Alarm contact
- "Fire Door Keep Locked" signage

**NOTES**

- 5th Floor and Mezzanine level doors design to suit services on external plant roof and in mezzanine plant room respectively

- To be read in conjunction with drawing G0642-GIB-00-GF-PL-A-2011-Ground Floor Envelope Setting Out

- All finishes to be Anodised Aluminium, colour to be confirmed.

**Access**

- External doors to ground floor to be LPS 1175 SR3 Rating or equivalent
- Access Control requirements to be reviewed by M&E
- Security, fire alarm, access control and power assisted door requirements to be coordinated with M&E and Fire Safety Consultant
- All wiring to be concealed within frame
- Allow for statutory signage to all designated fire doors (PPC stainless steel finish).

**Ironmongery**

- Lever handles and pull handles to be straight with mitred corners
- Doors shall be installed with a suitable lock barrel and a sacrificial Oval Cylinder in the door. Clients locksmith will replace the barrel with suited lock on appropriate College key suited lock.



| REV | DESCRIPTION  | DATE     | DRAWN | AUTH | REV | DESCRIPTION | DATE | DRAWN | AUTH |
|-----|--|----------|-------|------|-----|-------------|------|-------|------|
| P01 | PRELIMINARY ISSUE  | 21.06.19 | IR    | KC   |     |             |      |       |      |
| P02 | Ironmongery and notes added, as per Client Ironmongery Schedule.                       | 02.09.19 | IR    | KC   |     |             |      |       |      |
| C01 | Louvre free area requirements updated to suit M&E requirements.                        | 21.10.19 | IR    | KC   |     |             |      |       |      |
| C02 | Door DOOR-003 s/o width amended. Door DOOR-008 threshold amended to suit roof buildup. | 27.03.20 | IR    | KC   |     |             |      |       |      |

© Copyright of the information is vested in Gibberd Ltd.

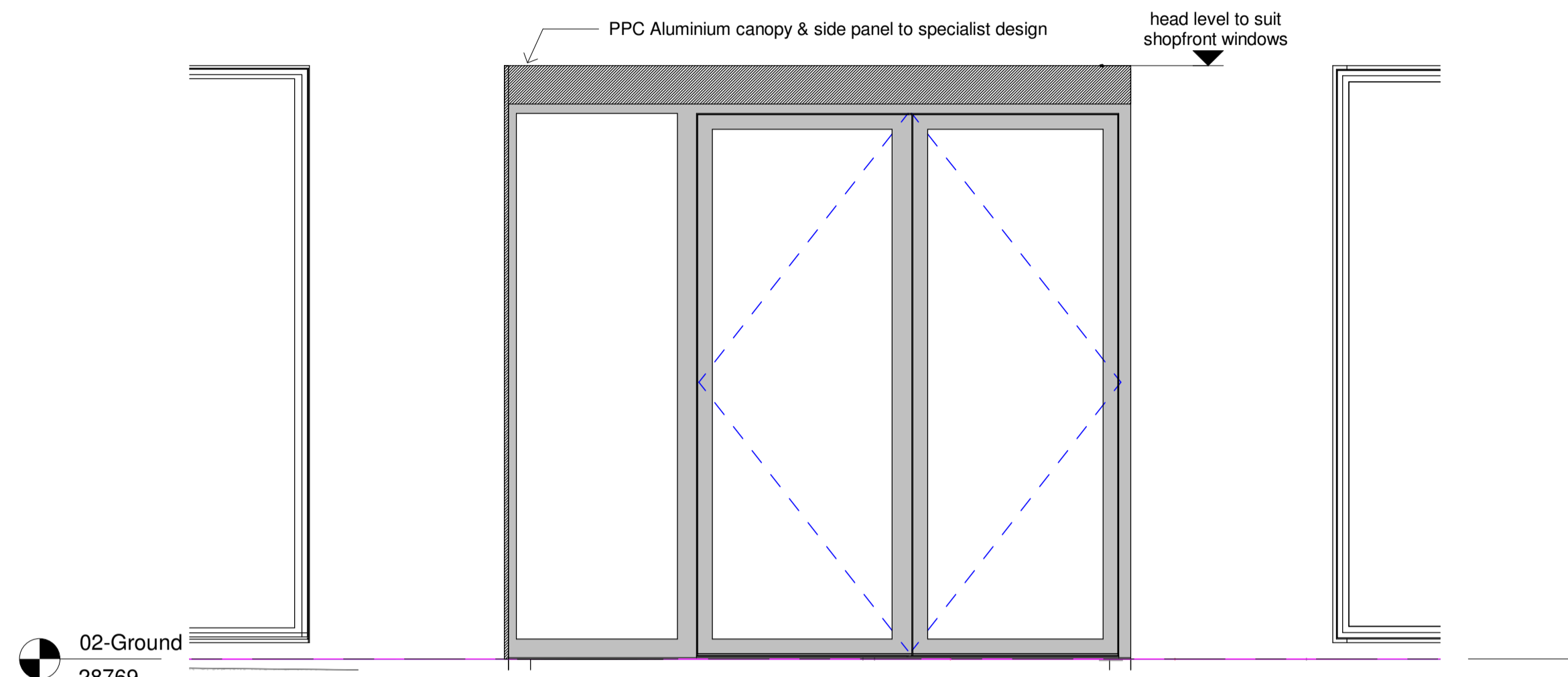
Do not scale from the drawing, work to figured dimensions only. All dimensions are to be checked on site. For the avoidance of any doubt, all dimensions are measured to wall structure and not finishes unless otherwise stated.



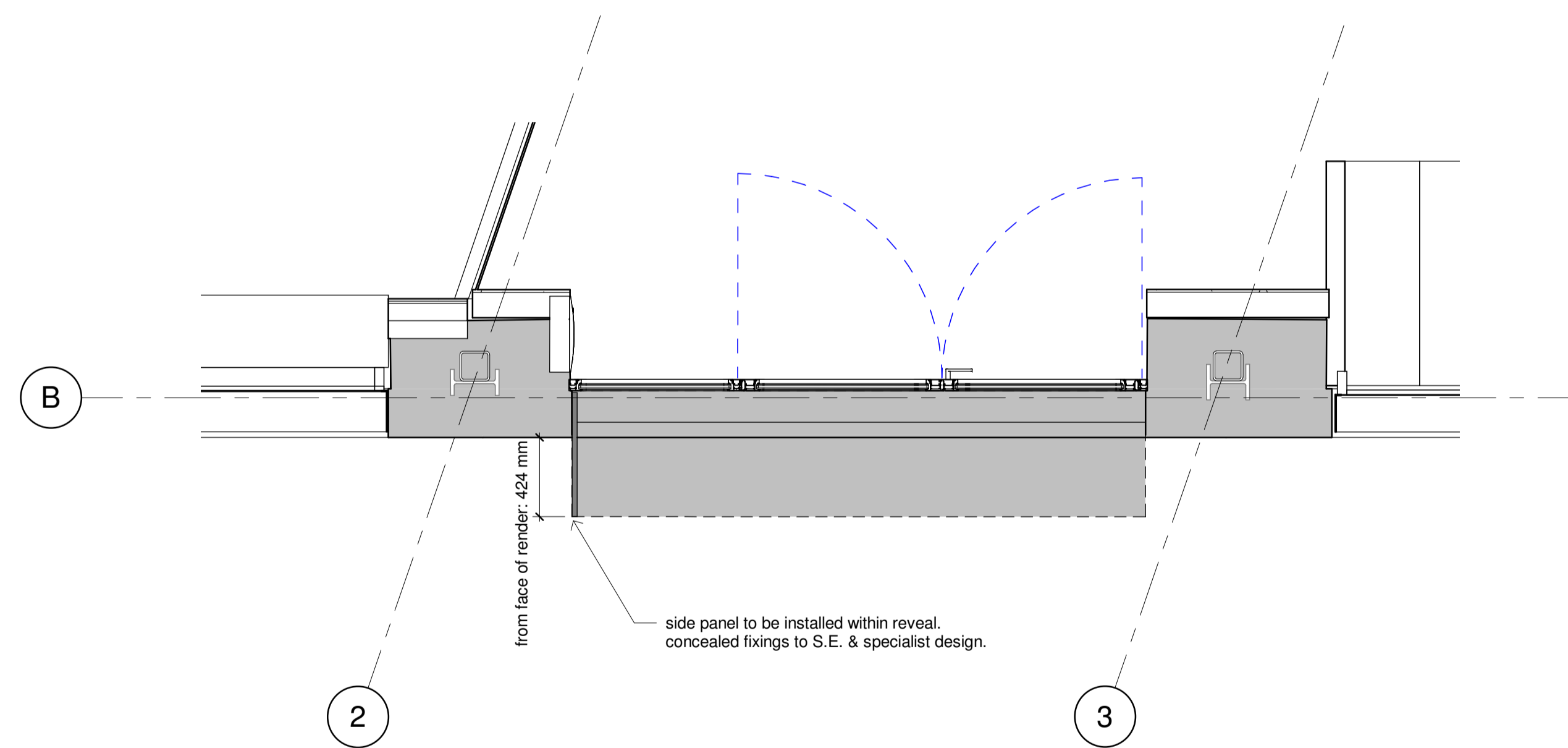
t: 020 7739 3400  
f: 020 7739 8948  
w: www.gibberd.com  
e: studio@gibberd.com

117-121 Curtain Road  
London EC2A 3AD

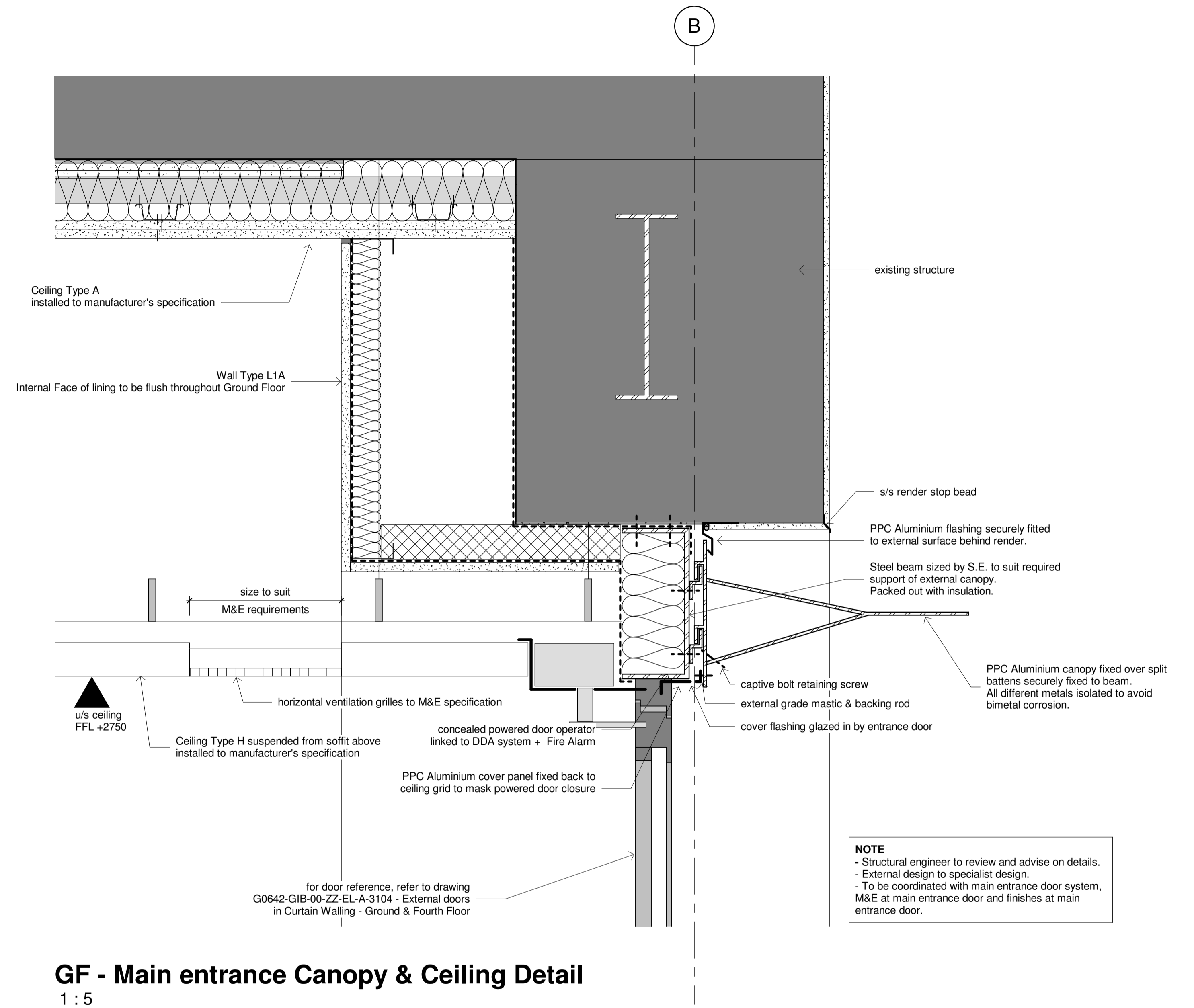
|                            |                      |                      |                     |
|----------------------------|----------------------|----------------------|---------------------|
| Client:                    | ARJ Construction Ltd | Internal Project No: | G0642               |
| Project:                   | Cambridge House      | Suitability:         | S3                  |
| Title: External Door Types |                      |                      |                     |
| Series:                    | (32) DOORS           | Date:                | 21/06/19            |
| Scale (A1):                | 1 : 25               | Job No:              | GIB 00 ZZ EL A 3220 |
| Originator:                | Zone:                | Level:               | Type:               |
| Role:                      | Number:              | Rev:                 | C02                 |
| Drawn:                     | IR                   | Reviewed:            | KC                  |
| Auth:                      | KC                   | Status:              | PRELIMINARY         |



**GF - Main entrance Canopy Elevation**  
1 : 25



**GF - Main entrance Canopy Plan**  
1 : 25



**GF - Main entrance Canopy & Ceiling Detail**  
1 : 5

**NOTE**  
- Structural engineer to review and advise on details.  
- External design to specialist design.  
- To be coordinated with main entrance door system, M&E at main entrance door and finishes at main entrance door.

**NOTE**  
Preliminary issue reflects design intent only. Design to be reviewed by Client and developed in collaboration with sub-contractor.



| REV | DESCRIPTION   | DATE     | DRAWN | AUTH | REV | DESCRIPTION | DATE | DRAWN | AUTH |
|-----|---|----------|-------|------|-----|-------------|------|-------|------|
| P01 | PRELIMINARY ISSUE   | 02.09.19 | IR    | KC   |     |             |      |       |      |
| P02 | Updated to reflect proposed structural support to canopy. | 09.12.19 | IR    | KC   |     |             |      |       |      |
| C01 | CONSTRUCTION ISSUE  | 27.03.20 | IR    | KC   |     |             |      |       |      |

© Copyright of the information is vested in Gibberd Ltd.  
Do not scale from the drawing, work to figured dimensions only. All dimensions are to be checked on site. For the avoidance of any doubt, all dimensions are measured to wall structure and not finishes unless otherwise stated.

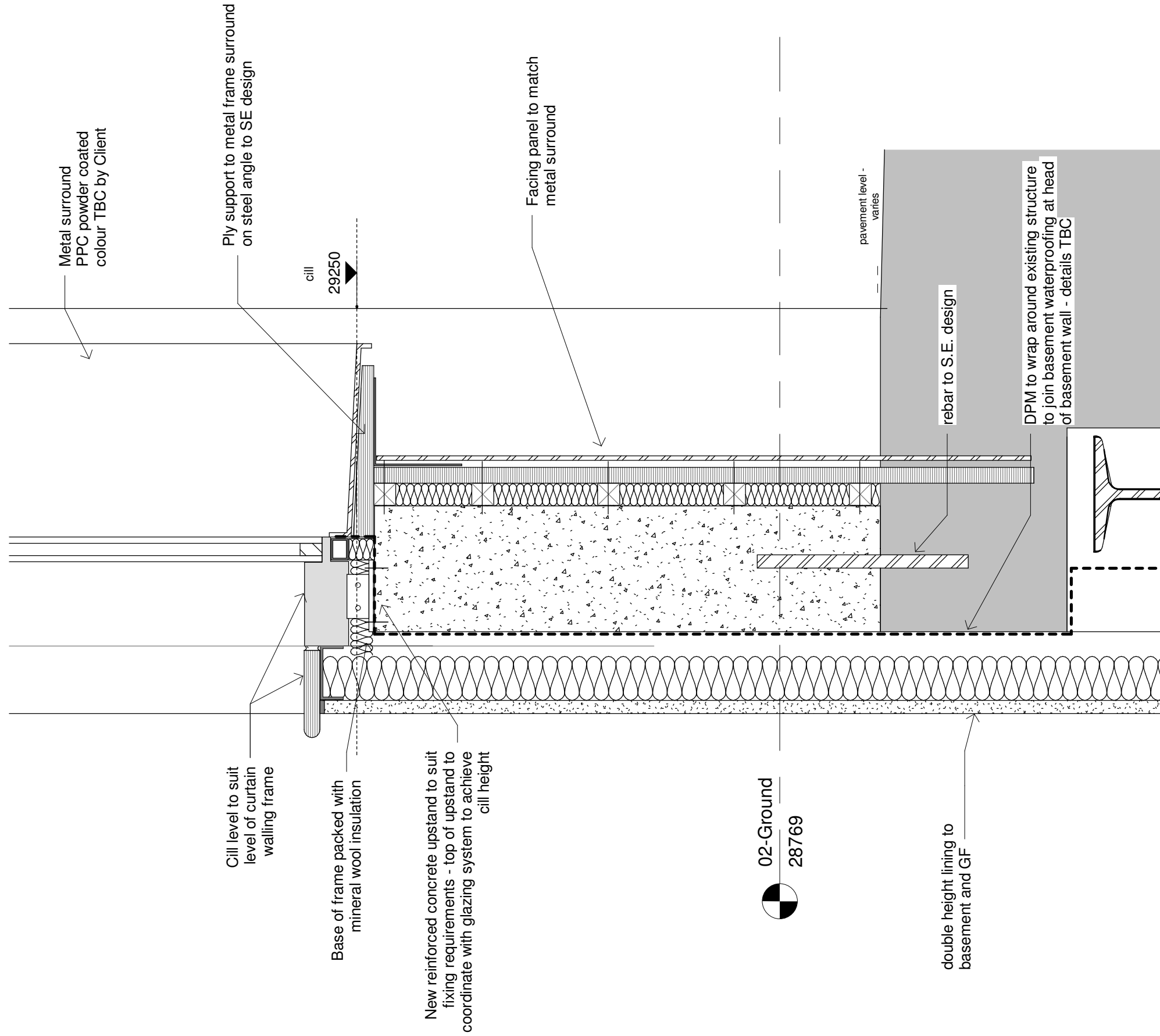


t: 020 7739 3400  
f: 020 7739 8948  
w: www.gibberd.com  
e: studio@gibberd.com

117-121 Curtain Road  
London EC2A 3AD

|  |                      |                      |          |
|--|----------------------|----------------------|----------|
| Client:                                  | ARJ Construction Ltd | Internal Project No: | G0642    |
| Project:                                 | Cambridge House      | Suitability:         | A        |
| Title: Ground Floor Main Entrance Canopy |                      |                      |          |
| Series:                                  | (31) WINDOWS         | Date:                | 02/09/19 |
| Scale (A1):                              | As indicated         | Job No:              | G0642    |
| Originator:                              | GIB                  | Zone:                | 00       |
| Level:                                   | 00                   | Type:                | DT       |
| Role:                                    | A                    | Number:              | 3113     |
| Rev:                                     | C01                  | Drawn:               | IR       |
| Reviewed:                                | KC                   | Auth:                | KC       |
| Status:                                  | CONSTRUCTION         |                      |          |

**NOTE**  
To be read in conjunction with drawing G0642-GIB-00-GF-DT-A-3116 - Ground Floor Curtain Walling - Typical Jamb Detail



| REV | DESCRIPTION       | DATE     | DRAWN | AUTH | REV | DESCRIPTION | DATE | DRAWN | AUTH |
|-----|-------------------|----------|-------|------|-----|-------------|------|-------|------|
| P01 | PRELIMINARY ISSUE | 16.10.19 | IR    | KC   |     |             |      |       |      |
|     |                   |          |       |      |     |             |      |       |      |
|     |                   |          |       |      |     |             |      |       |      |
|     |                   |          |       |      |     |             |      |       |      |
|     |                   |          |       |      |     |             |      |       |      |
|     |                   |          |       |      |     |             |      |       |      |
|     |                   |          |       |      |     |             |      |       |      |
|     |                   |          |       |      |     |             |      |       |      |
|     |                   |          |       |      |     |             |      |       |      |
|     |                   |          |       |      |     |             |      |       |      |

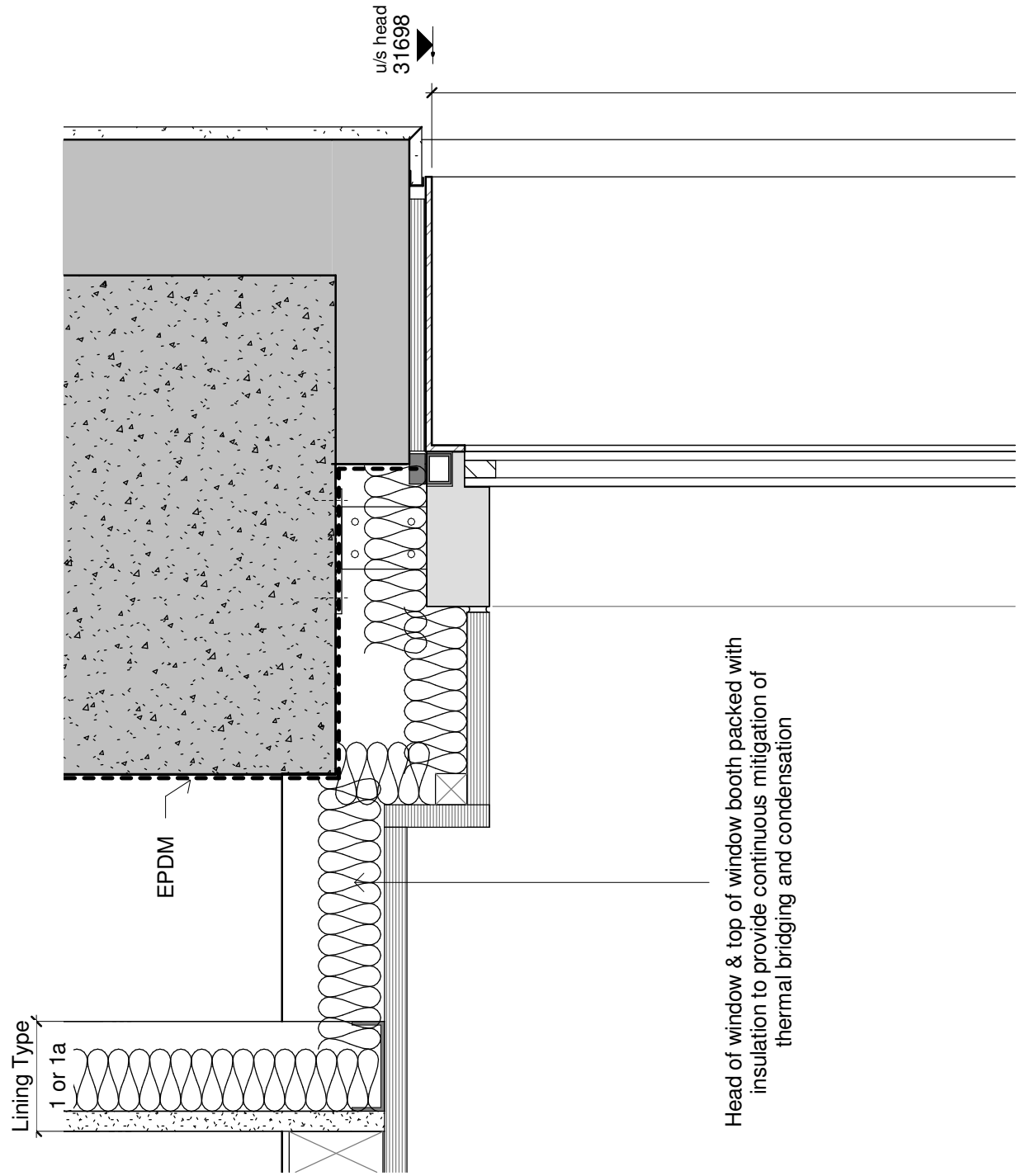
© Copyright of the information is vested in **Gibberd Ltd.**  
Do not scale from the drawing, work to figured dimensions only. All dimensions are to be checked on site. For the avoidance of any doubt, all dimensions are measured to wall structure and not finishes unless otherwise stated.

**gibberd** limited  
t: 020 7739 3400  
f: 020 7739 8948  
w: www.gibberd.com  
e: studio@gibberd.com  
117-121 Curtain Road  
London EC2A 3AD

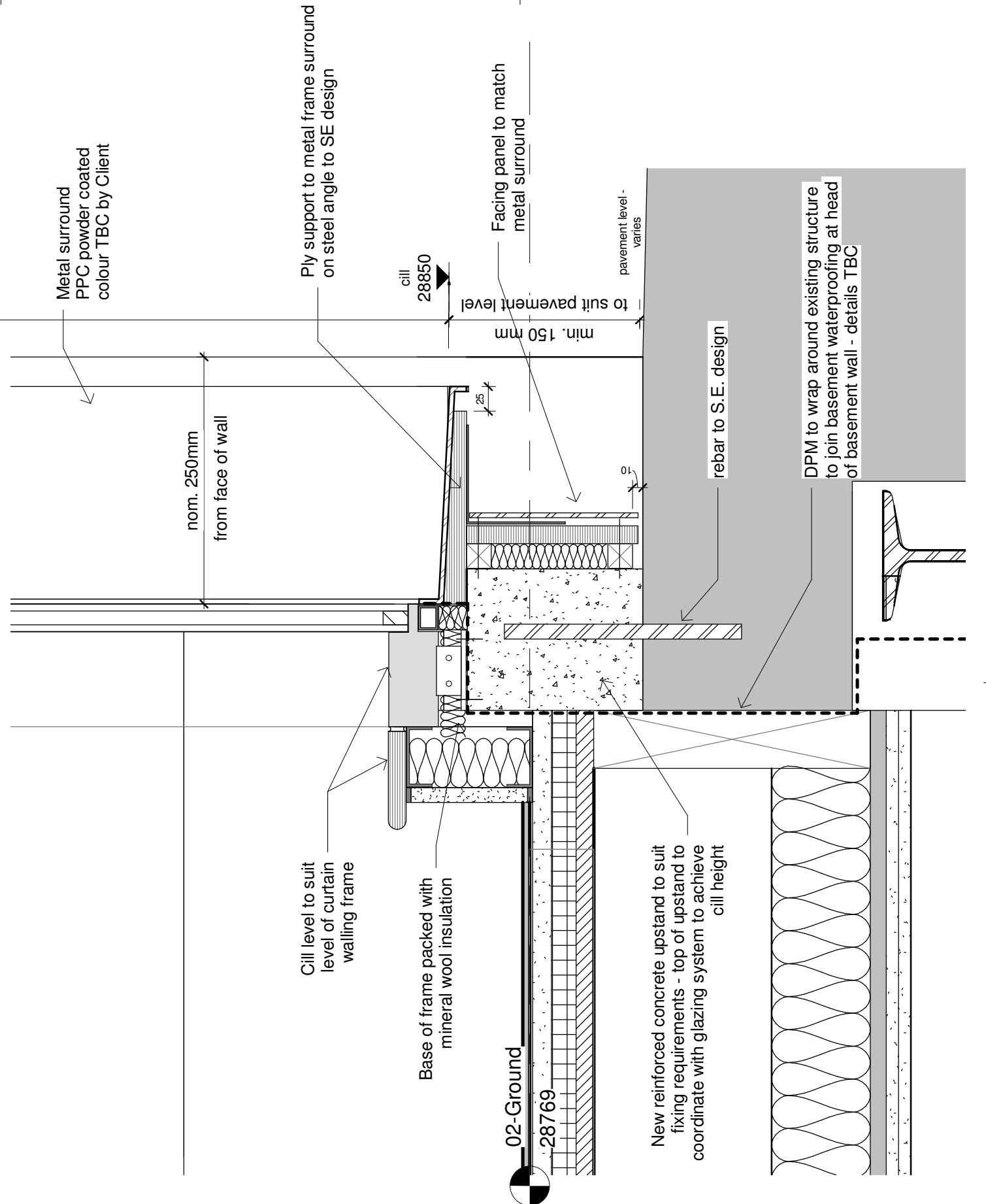
|   |                     |                            |
|---|---------------------|----------------------------|
| Client: ARJ Construction Ltd  |                     | Internal Project No: G0642 |
| Project: Cambridge House  |                     | Suitability: S3            |
| Title: Ground Floor Curtain Wall - Corner Window - Euston Road / Cleveland Street |                     |                            |
| Series: (31) CURTAIN WALLING  | Date: 10/18/19      | Scale (A3): 1 : 5          |
| Drawing No: G0642   | GIB 00 GF DT A 3119 | Rev: P01                   |
| Drawn: KC   | Reviewed: IR        | Auth: KC                   |
| Status: PRELIMINARY   |                     |                            |

**NOTE**

To be read in conjunction with drawing G0642-GIB-00-GF-DT-A-3116 - Ground Floor Curtain Walling - Typical Jamb Detail



2848



| REV | DESCRIPTION                  | DATE     | DRAWN | AUTH | REV | DESCRIPTION | DATE | DRAWN | AUTH |
|-----|------------------------------|----------|-------|------|-----|-------------|------|-------|------|
| P01 | PRELIMINARY ISSUE            | 08.10.19 | IR    | KC   |     |             |      |       |      |
| P02 | Updated to suit MNP comment. | 16.10.19 | IR    | KC   |     |             |      |       |      |
|     |                              |          |       |      |     |             |      |       |      |
|     |                              |          |       |      |     |             |      |       |      |
|     |                              |          |       |      |     |             |      |       |      |
|     |                              |          |       |      |     |             |      |       |      |
|     |                              |          |       |      |     |             |      |       |      |
|     |                              |          |       |      |     |             |      |       |      |
|     |                              |          |       |      |     |             |      |       |      |
|     |                              |          |       |      |     |             |      |       |      |

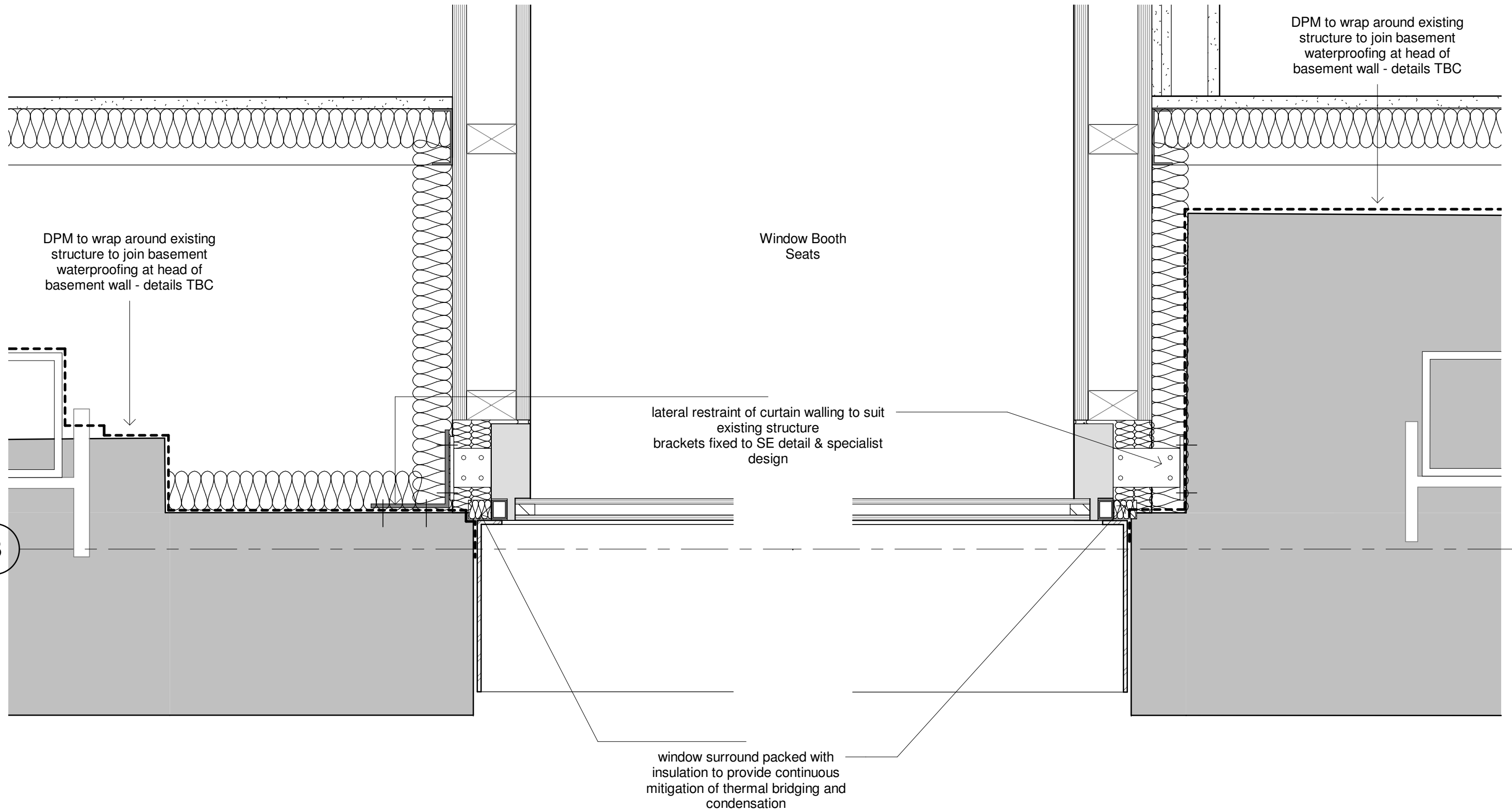
© Copyright of the information is vested in Gibberd Ltd.  
 Do not scale from the drawing, work to figured dimensions only. All dimensions are to be checked on site. For the avoidance of any doubt, all dimensions are measured to wall structure and not finishes unless otherwise stated.

**gibberd**  
limited

t: 020 7739 3400  
 f: 020 7739 8948  
 w: www.gibberd.com  
 e: studio@gibberd.com

117-121 Curtain Road  
 London EC2A 3AD

|  |                            |
|--|----------------------------|
| Client: ARJ Construction Ltd                                   | Internal Project No: G0642 |
| Project: Cambridge House                                       | Suitability: S3            |
| Title: Ground Floor Curtain Wall - Typical Head & Cill Details |                            |
| Series: (31) CURTAIN WALLING                                   | Date: 08/10/19             |
| Scale (A3): 1 : 5  |                            |
| Job No: G0642  | Originator: GIB            |
| Zone: 00   | Level: ZZ                  |
| Type: DT   | Role: A                    |
| Number: 3115   | Rev: P02                   |
| Drawn: IR  | Reviewed: KC               |
| Auth: KC   | Status: PRELIMINARY        |



**NOTE**

To be read in conjunction with drawing G0642-GIB-00-GF-DT-A-3115 - Ground Floor Curtain Wall - Typical Head & Cill Details

| REV | DESCRIPTION                  | DATE     | DRAWN | AUTH | REV | DESCRIPTION | DATE | DRAWN | AUTH |
|-----|------------------------------|----------|-------|------|-----|-------------|------|-------|------|
| P01 | PRELIMINARY ISSUE            | 08.10.19 | IR    | KC   |     |             |      |       |      |
| P02 | Updated to suit MNP comment. | 16.10.19 | IR    | KC   |     |             |      |       |      |
|     |                              |          |       |      |     |             |      |       |      |
|     |                              |          |       |      |     |             |      |       |      |
|     |                              |          |       |      |     |             |      |       |      |
|     |                              |          |       |      |     |             |      |       |      |
|     |                              |          |       |      |     |             |      |       |      |
|     |                              |          |       |      |     |             |      |       |      |
|     |                              |          |       |      |     |             |      |       |      |



© Copyright of the information is vested in Gibberd Ltd.  
Do not scale from the drawing, work to figured dimensions only. All dimensions are to be checked on site. For the avoidance of any doubt, all dimensions are measured to wall structure and not finishes unless otherwise stated.



t: 020 7739 3400  
f: 020 7739 8948  
w: www.gibberd.com  
e: studio@gibberd.com  
117-121 Curtain Road  
London EC2A 3AD

|   |                    |                            |                     |
|---|--------------------|----------------------------|---------------------|
| Client: ARJ Construction Ltd                              |                    | Internal Project No: G0642 |                     |
| Project: Cambridge House                                  |                    | Suitability: S3            |                     |
| Title: Ground Floor Curtain Walling - Typical Jamb Detail |                    |                            |                     |
| Series: (31) CURTAIN WALLING                              | Date: 10/08/19     | Scale (A3): 1 : 5          |                     |
| Job No: G0642   | Originator: GIB 00 | Level: GF                  | Type: DT            |
| Role: A   | Number: 3116       | Rev: P02                   |                     |
| Drawn: Author   | Reviewed: Checker  | Auth: Approver             | Status: PRELIMINARY |