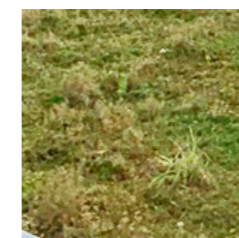


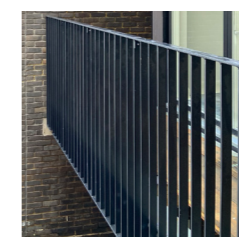
1. Fibre cement board Equitone 'Natura'



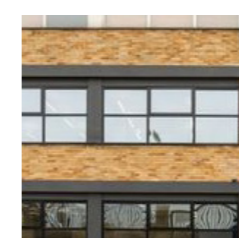
2. Glazed curtain wall



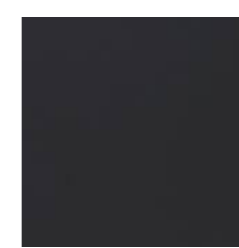
3. Green roof



4. Flat plate metal railings to match elsewhere



5. Existing yellow brickwork



6. Aluminium framed windows in matt black finish

tasou
associates architects + structural engineers

4 Amwell Street, London. EC1R 1UG T:020 7713 7070 F:020 7713 7071 E:tasou@tasou.co.uk

project	1517- St Pancras Way (18-20)		
dwg title	VISUALISATION		
job no.	1744	drwg no.	PA.09 rev. -
date	April 2020	scale @ A3	NTS