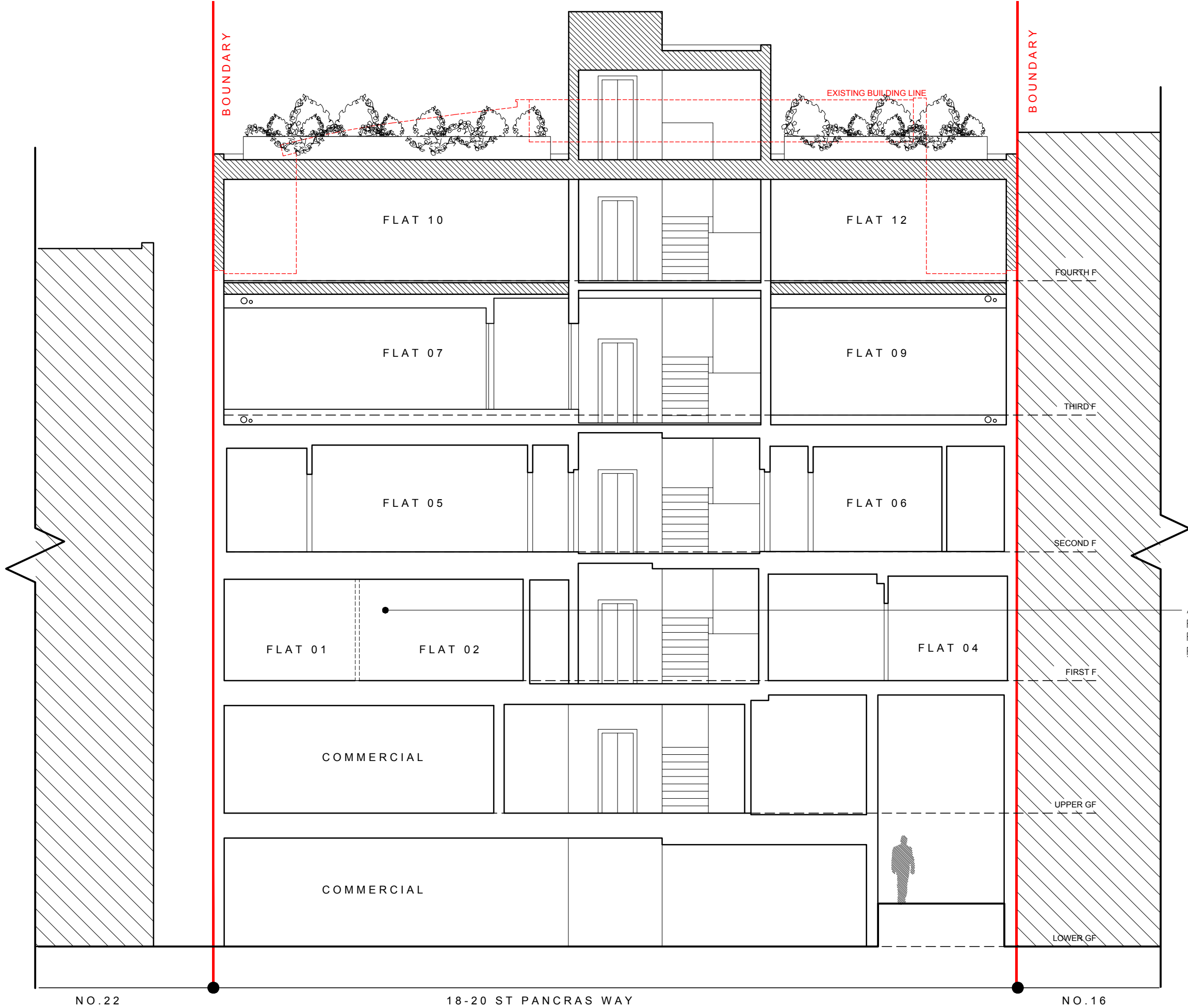


Do not scale off this drawing - All areas and dimensions are approximate and subject to site survey.
© copyright of tasou associates

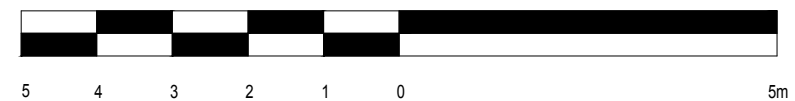


APPROVED PLANNING PERMISSION FOR SECOND HOUSE (18B) AND RECONFIGURING FLAT 01 AND 02. REF: 2018/4942/P.

NO. 22

18-20 ST PANCRAS WAY

NO. 16



A.06.04.2020 PLANNING AMENDMENTS

tasou
associates architects + structural engineers

4 Amwell Street, London. EC1R 1UG T:020 7713 7070 F:020 7713 7071 E:tasou@tasou.co.uk

project	1517- St Pancras Way (18-20)		
dwg title	SECTION AA		
job no.	1744	dwg no.	PA.04 rev. A
date	Aug 2019	scale @ A3	1:100