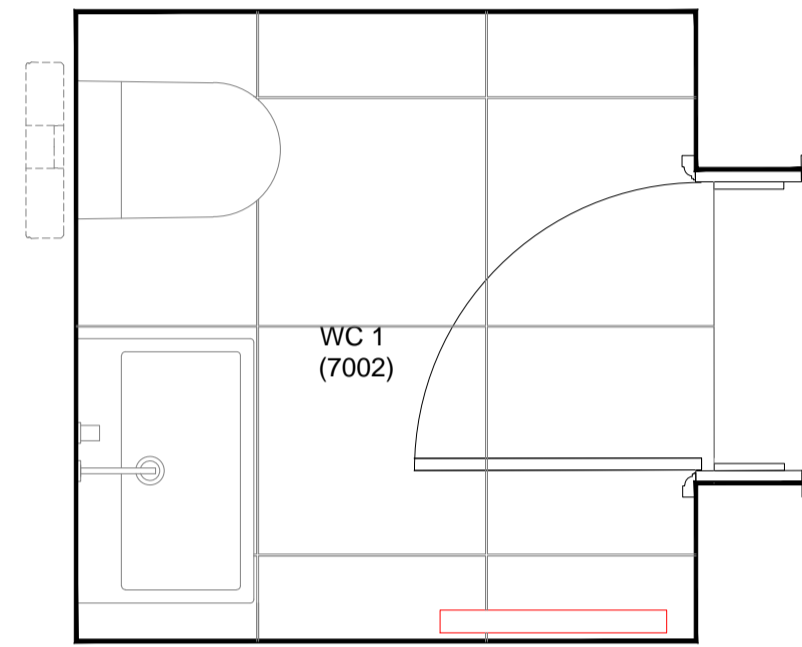


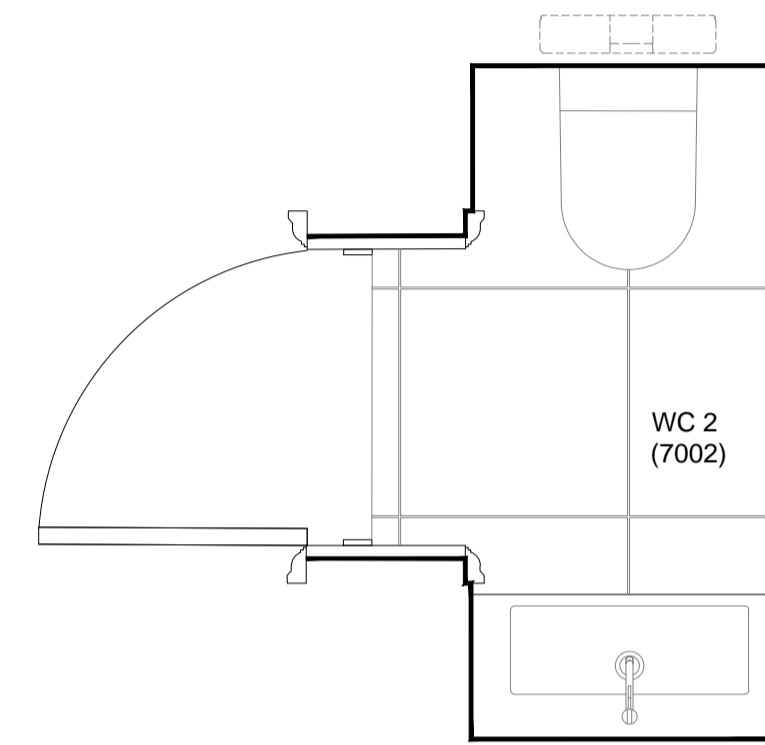
Plan
Basement Shower/ Changing/ WC (7001)

Specification	
WC	Duravit ME by Starck WC, 370 x 570mm (252909) (TBC by Client)
WC Seat & Cover	Duravit ME by Starck toilet seat and cover with automatic closure (002009) (TBC by Client)
WC Frame	Gebert Duxfix frame with Sigma system (111.729.00.1)
WC Flush button	Viola push button for dual flow system (A83), incl. access panel (TBC by Client)
Washbasin	Bespoke granite basin with overflow (TBC by Client)
Wet Room	CGL Liner Wet Dec' shower tray tiled, 1800x1000 (WC209) Type S) (TBC by Client)
Jet Shower	Viola Combi 10 hand shower and hose with hose (070), wall mounted hand shower (005A), 2 Nos body jet (080K), 3-way thermostatic mixer (0401A3) (TBC by Client)
Push-Open Waste	Duravit washbasin Push-open waste (005052) (TBC by Client)
Tap	Viola built-in basin tap, 225mm fixed spout, valve (021) (TBC by Client)
Shaver Socket	Sockets included in the mirror cabinets
Toilet roll holder	Viola toilet roll holder without back plate (T158P) (TBC by Client)
Mirror Cabinet	Kaico Edition 400 wall mounted mirror cabinet with mirror heating and adjustable light colour, 710x650x167mm (2155171301) (TBC by Client)
Bench	Timber bench to be finished in Charcoal colour/finish. (TBC by Client)
Shelving	Timber shelving to be finished in Charcoal colour/finish. (TBC by Client)
Clothing hooks	3No. of Viola Towel hook, 56 mm (T16) (TBC by Client)
Floor Finish	Black Flamed Granite Tiles by Nero Assoluto with 3mm joints (PC sum £50/m ² supply only) (TBC by Client)
Wall Finish	Black Basalt tiles (PC sum £50/m ² supply only) (TBC by Client)
Lighting	By Mechanical & Electrical Engineer
Ventilation	By Mechanical & Electrical Engineer
Water consumption requirements:	
• Dual Flush WC 6.3 litre	
Note:	
• Dimensions to be taken onsite prior to manufacture.	
• Refer to Finish Schedule for finish details.	
• Refer to drawing series 208-16-2000 and 2300 for Wall Types details.	
• Refer to M&E proposals for shaver socket details and locations.	



Plan
Ground Floor WC 1 (7002)

Specification	
WC	Duravit ME by Starck WC, 370 x 570mm (252909) (TBC by Client)
WC Seat & Cover	Duravit ME by Starck toilet seat and cover with automatic closure (002009) (TBC by Client)
WC Frame	Gebert Duxfix frame with Sigma system (111.729.00.1)
WC Flush Button	Viola push button for dual flow system (A83), incl. access panel (TBC by Client)
Washbasin	Duravit Vero Air washbasin with overflow, 700x470 (235070) (TBC by Client)
Push-Open Waste	Duravit washbasin Push-open waste (005052) (TBC by Client)
Tap	Viola one-handle mixer, Height 150mm, 150mm fixed spout and medium lever. (HVM+30150) (TBC by Client)
Shaver Socket	Sockets included in the mirror cabinets (TBC by Client)
Towel Rail	MHG Sabrina' dual fuel towel radiator (TBC by Client)
Toilet Roll Holder	Viola toilet roll holder without back plate (T158P) (TBC by Client)
Mirror Cabinet	Kaico Edition 400 wall mounted mirror cabinet with mirror heating and adjustable light colour, 710x650x167mm (2155171301) (TBC by Client)
Floor Finish	Porcelain Tiles (PC sum £50/m ² supply only) (TBC by Client)
Wall Finish	Porcelain Tiles (PC sum £50/m ² supply only) (TBC by Client)
Lighting	By Mechanical & Electrical Engineer
Ventilation	By Mechanical & Electrical Engineer
Water consumption requirements:	
• Dual Flush WC 6.3 litre	
Note:	
• Dimensions to be taken onsite prior to manufacture.	
• Refer to Finish Schedule for finish details.	
• Refer to drawing series 208-16-2000 and 2300 for Wall Types details.	
• Refer to M&E proposals for shaver socket details and locations.	



Plan
Ground Floor WC 2 (7003)

Specification	
WC	Duravit ME by Starck WC, 370 x 570mm (252909) (TBC by Client)
WC Seat & Cover	Duravit ME by Starck toilet seat and cover with automatic closure (002009) (TBC by Client)
WC Frame	Gebert Duxfix frame with Sigma system (111.729.00.1)
WC Flush Button	Viola push button for dual flow system (A83), incl. access panel (TBC by Client)
Washbasin	Bespoke granite basin with overflow (TBC by Client)
Push-Open Waste	Duravit washbasin Push-open waste (005052) (TBC by Client)
Tap	Viola one-handle mixer, Height 150mm, 150mm fixed spout and medium lever. (HVM+30150) (TBC by Client)
Shaver Socket	Sockets included in the mirror cabinets (TBC by Client)
Towel Rail	MHG Sabrina' dual fuel towel radiator (TBC by Client)
Toilet Roll Holder	Viola toilet roll holder without back plate (T158P) (TBC by Client)
Mirror Cabinet	Kaico Edition 400 wall mounted mirror cabinet with mirror heating and adjustable light colour, 710x650x167mm (2155171301) (TBC by Client)
Floor Finish	Porcelain Tiles (PC sum £50/m ² supply only) (TBC by Client)
Wall Finish	Porcelain Tiles (PC sum £50/m ² supply only) (TBC by Client)
Lighting	By Mechanical & Electrical Engineer
Ventilation	By Mechanical & Electrical Engineer
Water consumption requirements:	
• Dual Flush WC 6.3 litre	
Note:	
• Dimensions to be taken onsite prior to manufacture.	
• Refer to Finish Schedule for finish details.	
• Refer to drawing series 208-16-2000 and 2300 for Wall Types details.	
• Refer to M&E proposals for shaver socket details and locations.	



Rev: Comments: By: Date:
A Bathroom Layout Changes MSIL 27-03-2020

PLANNING

Client:
-

Project Title:
24 Heath Drive, London, NW3 7SB

Drawing Title:
Bathroom Details
Basement and Ground Floor

Scale: 1:20@A1 Date: JAN 18 Drawn: KS Checked: HV



Studio
28 Scrutton Street
London
UK
EC2A 4RP

T: +44(0) 20 7247 2462
E: enquiries@kyson.co.uk
W: www.kyson.co.uk

Project No.: 508-16 Drawing No.: 7000 Revision: A

Do not scale this drawing. All dimensions must be checked on site. All rights reserved. No reproduction in any material form is permitted without consent.