



Feel Protected.

**Powershield Fire.**

## Fire Doors

To BS 476 Part 22 and EN 1634-1: 2008

### Steel Fire Door Construction

- Similar construction to Powershield Personnel with minimum material thicknesses as specified
- Non-combustible core (reinforced where required)
- Includes singles, doubles/leaf & half, all as per configurations detailed on Page 3
- Fire doors can be certified latched or unlatched depending on size and configuration and can include vision panels up 600mm wide x 800mm high or 200mm wide x 1500mm high. Fire rated louvres are also available up to 500mm wide x 1500mm high

### Performance

- FD30(S) – FD240(S) in accordance with BS476 Part 22: 1987
- E30 – E240 in accordance with EN1634-1: 2008
- Most standard configurations are Certifire compliant and therefore regularly audited and approved by third party to ensure continued conformity

### Options

- Double action with door opening size up to 2.6m x 2.6m to FD60(S)/E60
- Sliding with door opening size up to 2.2mW x 2.4mH to FD90

### Other performance options available with fire performance

- Security, Cleanroom, Blast, Ballistic and Acoustic
- Supply Stainless Steel finish



## Personnel

## Personnel Doorset

### Application:

Powershield Personnel is a high quality aesthetically pleasing door, which uses SMARTform Technology and offers discrete performance and security suitable for a wide range of locations.

ASSA ABLOY Security Doors offer a comprehensive range of pre-engineered steel doorsets manufactured to suit your requirements. With exceptional aesthetic and long-lasting appeal Powershield Lagan steel doorsets have earned a reputation for quality and high performance throughout the commercial and industrial building market.

Typical applications for this type of door include:

- Retail and commercial
- Industrial
- Transport
- Residential
- Public buildings
- Custodial & government buildings

The Powershield Personnel doorset is fully configurable with a wide range of options and features, providing a high quality door to meet a wide range of needs.

### Specification:

- Single and double, leaf and a half configurations
- Inward and outward opening
- Overhead panels and side panels
- Project specific frame profiles with a variety of frame fixing options
- Full range of ASSA ABLOY hardware options
- Available with a range of Vision Panels including single, double and triple glazed with a variety of window beading styles
- Upgradable for fire rating up to 240 minutes
- Upgradable acoustic enhancement up to 45dB for single doors (43dB for doubles)
- Galvanised steel construction with an optional upgrade to stainless steel

Powershield Personnel doorsets are available in a wide range of customisable options. Please refer to the Technical Brochure for more information, or contact us on 0044 28 9266 2200.

### Finish:

Powershield Security Doors are available in a wide range of finishes including primed, powder coated and stainless steel. For our standard colour range please refer to the Standard Colour Palette in the downloads section, or contact us on 0044 28 9266 2200 for further options.



**Powershield**

SMARTform 

### Standards:

- BS EN 14351-1:2006 +A1 2010
- Upgradable to EN-ISO 140-3
- Upgradable to FD30(S) – FD240(S) in accordance with BS476 Part 22: 1987
- Upgradable to E30 – E240 in accordance with EN1634-1: 2008
- Most standard configurations are available as Certifire compliant and therefore regularly audited and approved by third party to ensure continued conformity



### Technical Data:

- Typical insulation value: Pre-expanded, small cell honeycomb core 3.7 - 4.6W/m<sup>2</sup>k depending on hardware and glazing options.
- Typical insulation value: High density mineral wool core 3.1 - 4.8 W/m<sup>2</sup>k depending on hardware and glazing options. For industry leading U values of up to 1.6 W/m<sup>2</sup>K Please refer to the Powershield Thermo product.

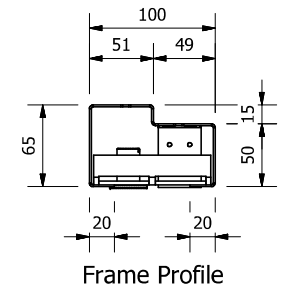
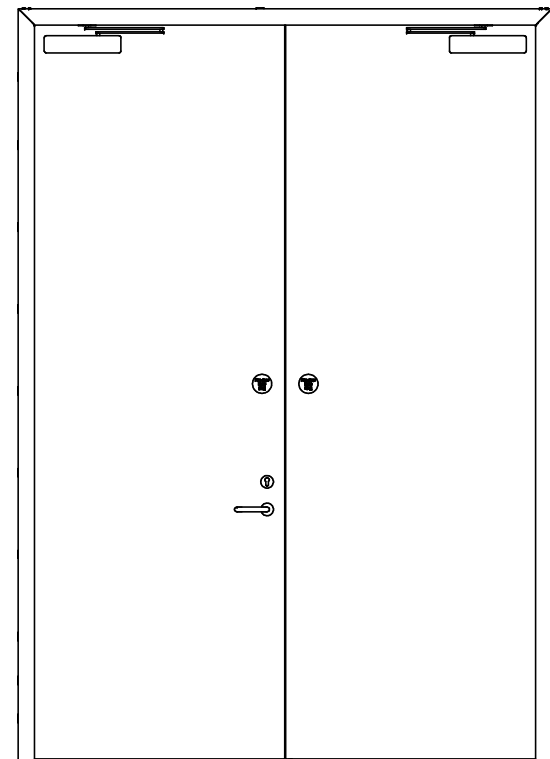
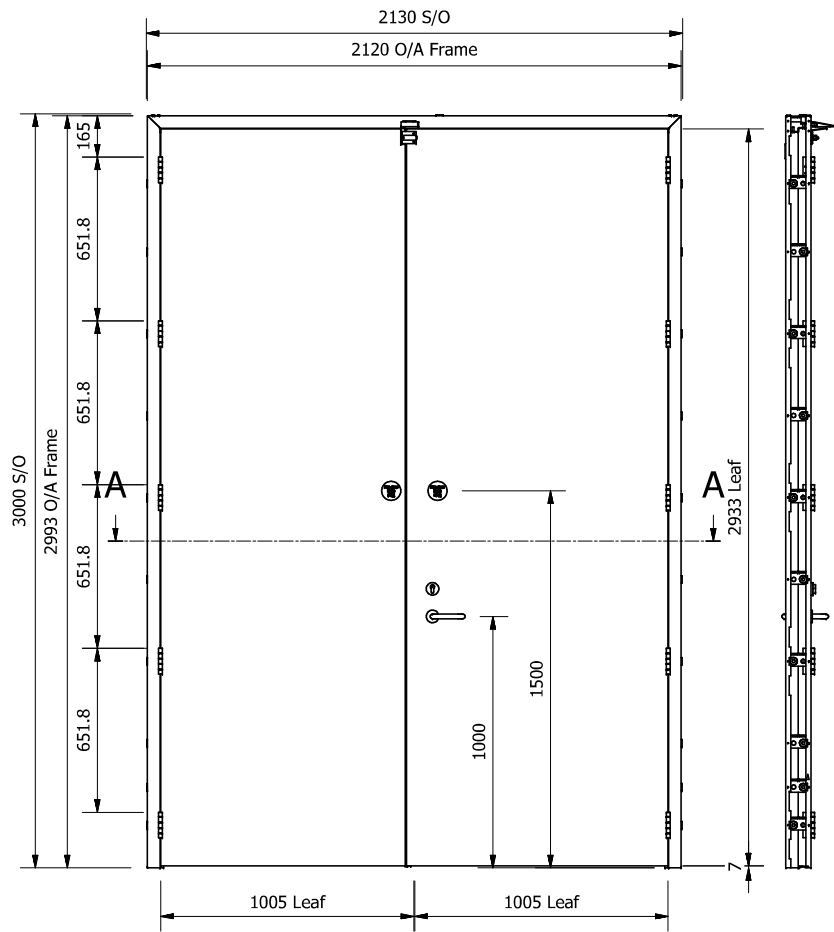
### Standard Leaf Construction

- Smartform Technology featuring a continuous "deep pocket" interlocking lock seam to all edges for superior strength and durability. Smartform Technology reduces both material and energy waste, resulting in a sustainable and environmentally friendly product.
- Two skins of 1.2mm (18 ga.) thick steel Galvatite ZF "Galvaneal" to EN10142:2000
- 44mm thick door leaf with no face seams
- The core is insulated and sound deadened with pre-expanded, small cell honeycomb core material and laminated under heat and pressure to the face skins
- Doors are complete with lock and hardware reinforcements engineered to give high performance throughout the life of the door
- Door edges are bevelled for ease of operation and close fit
- Doors are morticed, reinforced, drilled and tapped for three templated hinges
- A fully flush integral astragal is folded into the leading edge of one leaf to increase security and reduce the chance of water ingress

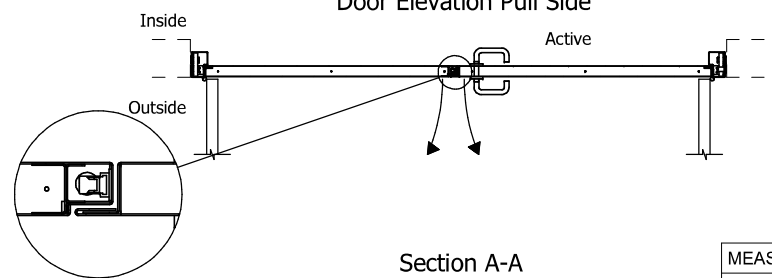
### Standard Frame Construction

- Powershield bespoke frame adjuster system which provides enhanced security, ease of installation and a durable and permanent fixing.
- Manufactured from 1.5mm (16 ga.) thick steel Galvatite ZF "Galvaneal" to EN10142:2000
- Supplied in either knock down for easy site assembly or fully welded smooth finish
- Frames are morticed, reinforced, drilled and tapped for hinges and strikes
- Frames are provided with a minimum of four fixings per jamb. Fixing holes are covered with either polymer cover caps or metal flush discs





Door Elevation Pull Side



Section A-A

MEASURED BY ASSA ABLOY	
MEASURED BY CUSTOMER	<input checked="" type="checkbox"/>
DRAWN TO SCHEDULED SIZE	

HARDWARE	QTY	CHK
102 x 76mm SS Hinge	10	
Smokeseal	1	
Wedge Selector	1	
Escutcheon	2	
Euro Profile Cylinder & Turn	1	
Assa Abloy Flush Bolt	2	
Assa 640 SSS Lever Handle	2	
Abloy DC347 Closer	2	
Assa 765 Sashlock	1	
Fire Door Keep Shut Sign	4	
Pemko 420 APKL Drop Seal	2	

REV	BY	DATE	DESCRIPTION
1	JW	09/01/20	AS PER COMMENTS
0	JW	17/12/19	FIRST ISSUE

REVISION HISTORY	
<b>General Information</b>	
Door Type: Fire Rated	
Door Infill: Honeycomb	
Fire Rating: FD240S	
Certifire Compliant: CF520	
CE Compliant: No	DoP Number: N/A
Finish: RAL 7035 GREY	
Frame: 1.5mm Galvaneal - Knockdown - 29Kg	
Leaf: 1.2mm Galvaneal - 76Kg	

**PMI 016**  
**Vinci**  
 Drawing Title:  
**Door SR01288 D1**  
**1 No. Reqd**

**ASSA ABLOY**

Opening Solutions  
 UK & Ireland Door Group  
 T: +44 28 9266 2200  
[www.assaabloy.co.uk/securitydoors](http://www.assaabloy.co.uk/securitydoors)

Drawn JW	Checked	Scales: 1:20	Dims in: mm Tolerance: +/-1mm	Glue Frame Leaf	Fit Up Paint Rebuild	Job No. SR01288	Drawing Number: D1	Rev. 1
Date 17/12/2019	Date							