



## Method Statement -30

### 4 Flitcroft Street Façade Render Removal



## DOCUMENT CONTROL SHEET

	Name (Please Print)	Signed	Date
Author	Graham Cann		31-01-20
Checked (Site Manager)			

Optional Review (Please tick boxes as required)	Name (Please Print)	Signed	Date
SHE Manager	Graham Cann		31-01-20
Project Manager	Joe Haysler		

### Briefing Attendance Record and Declaration

I confirm that on this date and in accordance with Company Health and Safety Policy and Procedures:

- I will be working as part of the discipline described here
- I have been given a briefing on the method statement / risk assessment and I confirm I am aware of the emergency arrangements
- I have been given a briefing
- I declare that I am not under the influence of alcohol or drugs
- Will not consume such alcohol or drugs during my working hours
- I am not required to take, and I have not taken any medication which may cause drowsiness

Print Name	Signed	Company	Given By	Date

## Contents

GENERAL .....	4
Introduction and General Proposals .....	4
Duration .....	4
Working Hours .....	4
Site Labour .....	4
Plant to be used .....	5
CDM Regulations.....	5
General Safety .....	5
Control Measures (Permits, Exclusion Zones, PPE etc.) .....	7
Resources .....	8
Emergency Arrangements.....	9
Completion .....	9
Training & Supervision.....	9

## **GENERAL**

### **Introduction and General Proposals**

This method statement relates to the opening up for approval of a sample render panel to the façade of 4 Flitcroft Street to establish the condition and stability of the brickwork below.

If approved, it is the intention to remove all of the render to reveal the existing brick façade below.

This Method Statement assumes all third-party approvals and consents are in place and agreed.

### ***Supervision***

Projects Director:	Graham Cann	07932 053660
Safety Officer (visiting):	Liberty Safety Services	01634 799186
Project Manager:	Richard Cann	07515 685874

### ***Duration***

It is anticipated the works will take no longer than 3 weeks to complete from the date of commencement.

The works will commence on receipt of planning approval and approval of the RAMS.

Contact Numbers for key members of staff are as follows: -

Head Office:	01992 618075
Bernard Higgins - Managing Director:	07813 976244
Graham Cann – Project Director	07932 053660

### ***Working Hours***

Monday to Friday:	0800am to 18.00pm
Saturday:	0800am to 13.00pm

### ***Site Labour***

Site Supervisor / Manager

All labour will be suitably qualified and experienced in their fields of work. Operatives will hold current, CSCS, CCDO, or other CITB recognised training.

# Cord

## ***Plant to be used***

The completion of these works will require the use of the following

- Access Scaffold
- Hand tools.

## **CDM Regulations**

The Risk Assessment and Method Statement prepared will be developed on consideration of information received from the Principal Designer/Client and any significant changes to the scope or method of works and sequence as may be required.

## **General Safety**

All site personnel will be inducted into the method statement, prior to attending the Cord induction if required.

All necessary PPE will be issued prior to the commencement on this phase of the works. Failure to wear the correct PPE will result in an official warning being issued to the individual. Any further breach will result in removal from site.

All access scaffolds will be constructed with handover certificates issued prior to allowing access to carry out the works.

Independent site safety audits will be carried out on a fortnightly basis, along with Managers site safety audits on a weekly basis. Reports will be provided to senior management and client team for review / reporting purposes.

Hot Works Permits, if required will be issued daily - work to stop two hours before working day finishes. A final check to be made by the nominated supervisor at the end of the working day before permits are signed off. Fire Watch period will be a minimum of 1 hour before the end of each shift or 1 hour after the hot works activities cease.

The work area will be cordoned off to protect the public and ensure only authorised personnel can access the work zone.

Safety signage will be posted, and relevant documentation will be made available to all personnel advising of any substances hazardous to health (refer to COSHH regulations).

The area will be left clean and tidy at the end of each working day.

Following completion of the works the area will be cleaned and left ready for the following trades.

## **General site practices:**

- Only qualified operatives will be assigned to any works associated with this method statement, and allowed on site, these are minimum requirements for working on site. These documents will be held in a site-specific folder in the Cord site office. Copies of these documents will also be provided to the Skanska project management
- All operatives will receive a full Cord Contracting site induction and receive a full method statement briefing prior to commencing on site. Any operatives who will be working within the Skanska site demise will also undertake a Skanska site induction.

# Cord

- Operatives will wear full personal protective equipment whilst working on site, consisting of steel toe and midsole capped boots, hard hat, Hi-Viz vests, gloves. Note: It is a requirement to wear safety glasses whilst on the Skanska site
- The foreman responsible for managing and monitoring the works will be first aid trained. A first aid kit is located in the Project Office in Book Mews.
- All works will be supervised by trained and competent supervisors.

## Planning

The works will be fully coordinated on site between the site management and the architect

## Sequence of works

- Safe working area to be established.
- Façade scaffold to be installed
- Sample area to be agreed with the architect
- Supervisor to advise nature and methodology for the works
- External render sample panel to be removed
- Architects inspection
- Planning consent to proceed
- Render removed
- Brickwork raked out and repointed
- Architectural approvals and sign off
- Façade scaffold removal

## Method of works

Following receipt of necessary permissions, and approval of the scaffolders RAMS, a full works exclusion zone will be established prior to the façade access scaffold install. The scaffold will include a double boarded and polyethene wrapped gantry, along with a fully boarded and netted access scaffold.

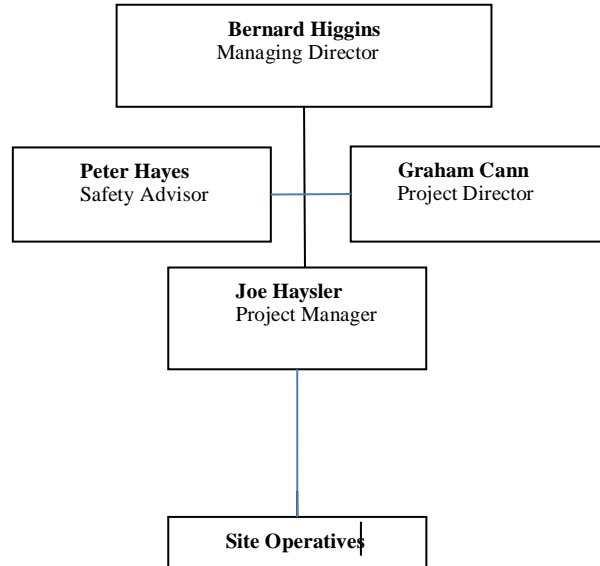
A suitable area and sample size will be agreed with the architect prior to commencement of the works. Due to the unknown nature of the brick substrate, all works to remove the external render will be communicated by the site supervisor and carried out carefully with hand tools. Following removal of the render sample the brick substrate will be reviewed by the Architect prior to further consultation with the planning officer.

Subject to the general condition of the substrate and granted permissions, the remaining render will be carefully removed in order to expose the original brickwork façade below. Following further review and discussion with the architect any necessary brick repairs will be carried out and the whole area blended with brick dye to achieve a natural finish. The façade will then be repointed to the approval of the architect.

<b>Control Measures (Permits, Exclusion Zones, PPE etc.)</b>					
Permits Required	Yes	No	Assessments required	Yes	No
<b>Hot works</b>		✓	<b>COSHH</b>	✓	
Crane check list		✓	Noise	✓	
Excavation		✓	Manual handling		✓
Confined space entry		✓	Electrical Isolation		✓
Riser shafts		✓			
<b>Further Control Measures / Security Requirements.</b>					
<b>Personal Protective Equipment</b>	Yes	No		Yes	No
Safety Helmet	✓		Gloves	✓	
Protective Footwear	✓		Hearing Protection		✓
High Visibility Clothing	✓		Overalls		✓
Eye protection	✓		Body Harness		✓
Face Respirator		✓	Other?		
<b>Equipment to Be Used</b>	Yes	No	<b>Equipment to Be Used</b>	Yes	No
Lifting		✓	Cradle		✓
Mechanical hoist		✓	Back propping		✓
MEWP		✓	Ventilation Equipment		✓
Ladder		✓	CAT		✓
Hoist		✓	Mechanical tools		✓
Test Equipment		✓	Lifting slings/chains		✓
Task Lighting		✓	Hand tools	✓	
Scaffolding	✓				
Mobile scaffolds		✓			

## Resources

### Management / Supervision



#### SMSTS/ SSSTS supervisors

- Graham Cann

#### Site first aiders

- Joe Haysler

#### Labour

- 1x Site Supervisor (first aider)
- 1x Operatives

#### Plant & Equipment

- Access Scaffold
- Hand tools



# Cord

<b><u>Training &amp; Supervision</u></b>					
Training Certificates Required					
	Yes	No		Yes	No
Scaffold	✓		Cherry Picker		✓
Forklift		✓	Mobile Access Towers		✓
Dumper		✓	Banksman		✓
Excavator		✓	Abrasive Wheels		✓
Others (Please state):					
Overall Assessment of Risk after the Implementation of Control Measures (tick one)					
Low	Moderate		Substantial	High	
	✓				

<b><u>Emergency Arrangements</u></b>	
First Aid Measures required	Rescue / Security Measures required
First aid and eye wash dispenser kits to be located at point of works	In the event of an emergency, first aid to be given to the injured person. All accidents to be recorded in the accident book.
Emergency / Out of Hours Contacts:	Graham Cann 07932 053 660

## **Completion**

As the works are completed the site will be left clean, tidy and secure.

This method statement has been produced specifically for the tasks as outlined above and may be updated to accommodate any changes to the site conditions or outlined methodology.

All changes will be relayed to the operatives as they become apparent via a toolbox talk, to be attached to the method statement.