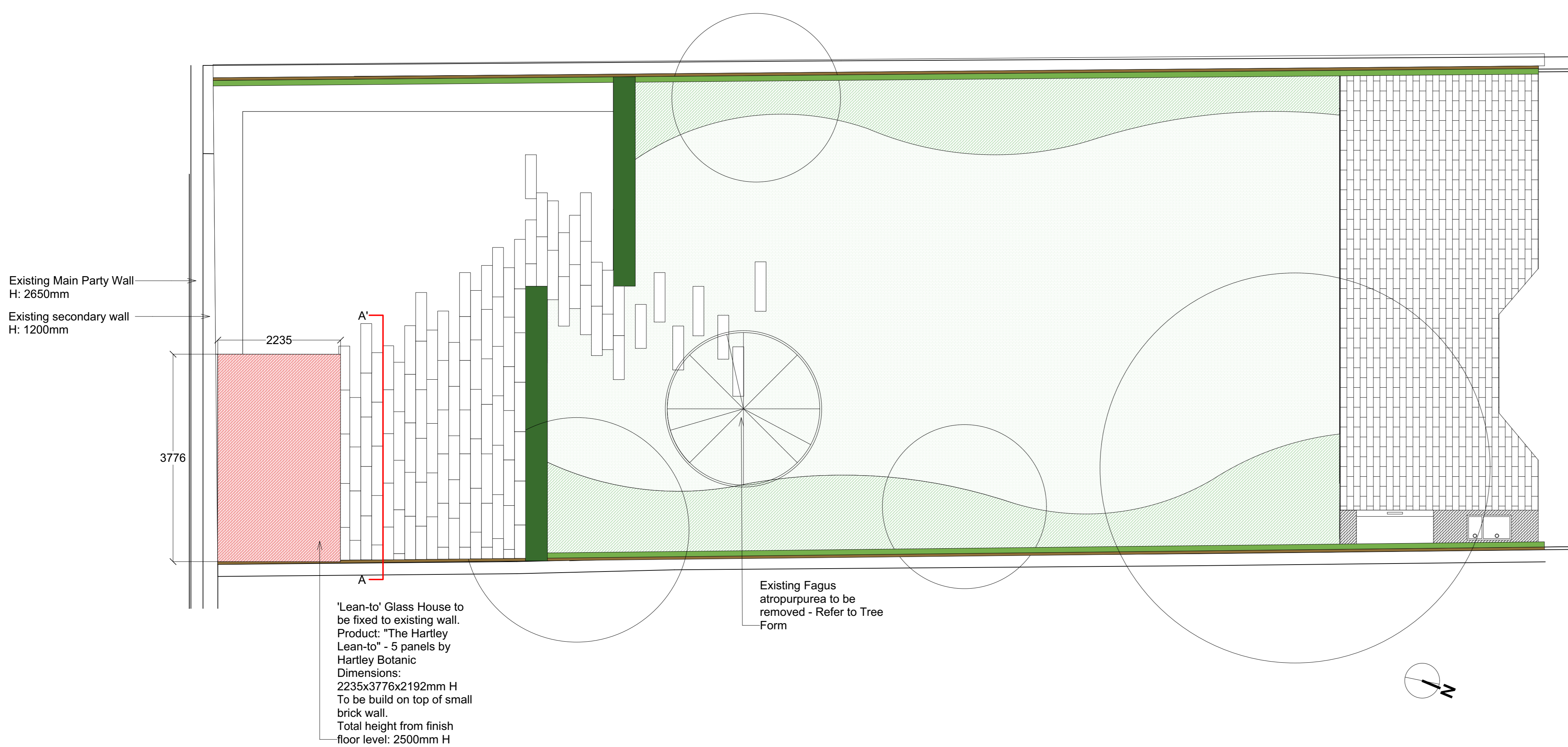


REAR GARDEN\_EXISTING PLAN

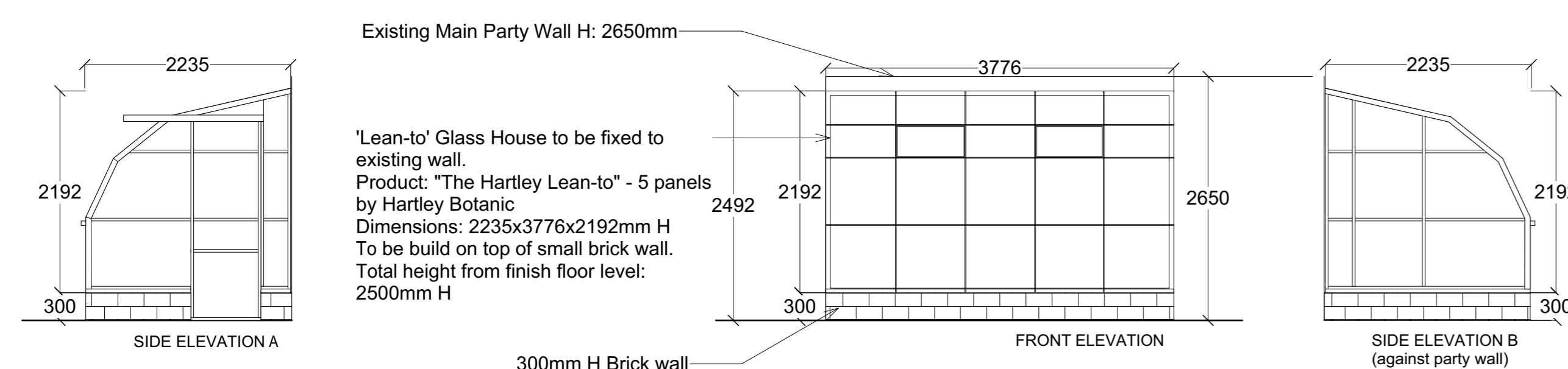


REAR GARDEN\_CURRENT SITUATION



REAR GARDEN\_PROPOSED PLAN

REV. A



LEAN-TO GLASS HOUSE\_ELEVATIONS



'LEAN-TO' GLASS HOUSE TO BE FIXED TO EXISTING WALL.  
 PRODUCT: "THE HARTLEY LEAN-TO" - 5 PANELS BY HARTLEY BOTANIC  
 DIMENSIONS: 2235x3776x2192MM H  
 TO BE BUILT ON TOP OF SMALL BRICK WALL.  
 TOTAL HEIGHT FROM FINISH FLOOR LEVEL: 2500MM H

PROJECTED BY Sofiano Marinaz Landscape Architecture Ltd	2020.01.13   REV. A - Addition of Glass House side views
DRAWN BY NP	PROJECT 121 King Henry's Road, London NW3 3SL
DESIGNED BY SM	TITLE General Arrangement Plan_Rear Garden - For Planning
APPROVED BY SM	DATE 05-12-2019
9 Fisher's Lane, Chiswick London W4 1RX M: +44 7515 023 780 www.stefanomarinaz.com	SCALE 1:50
	STATUS FOR PLANNING