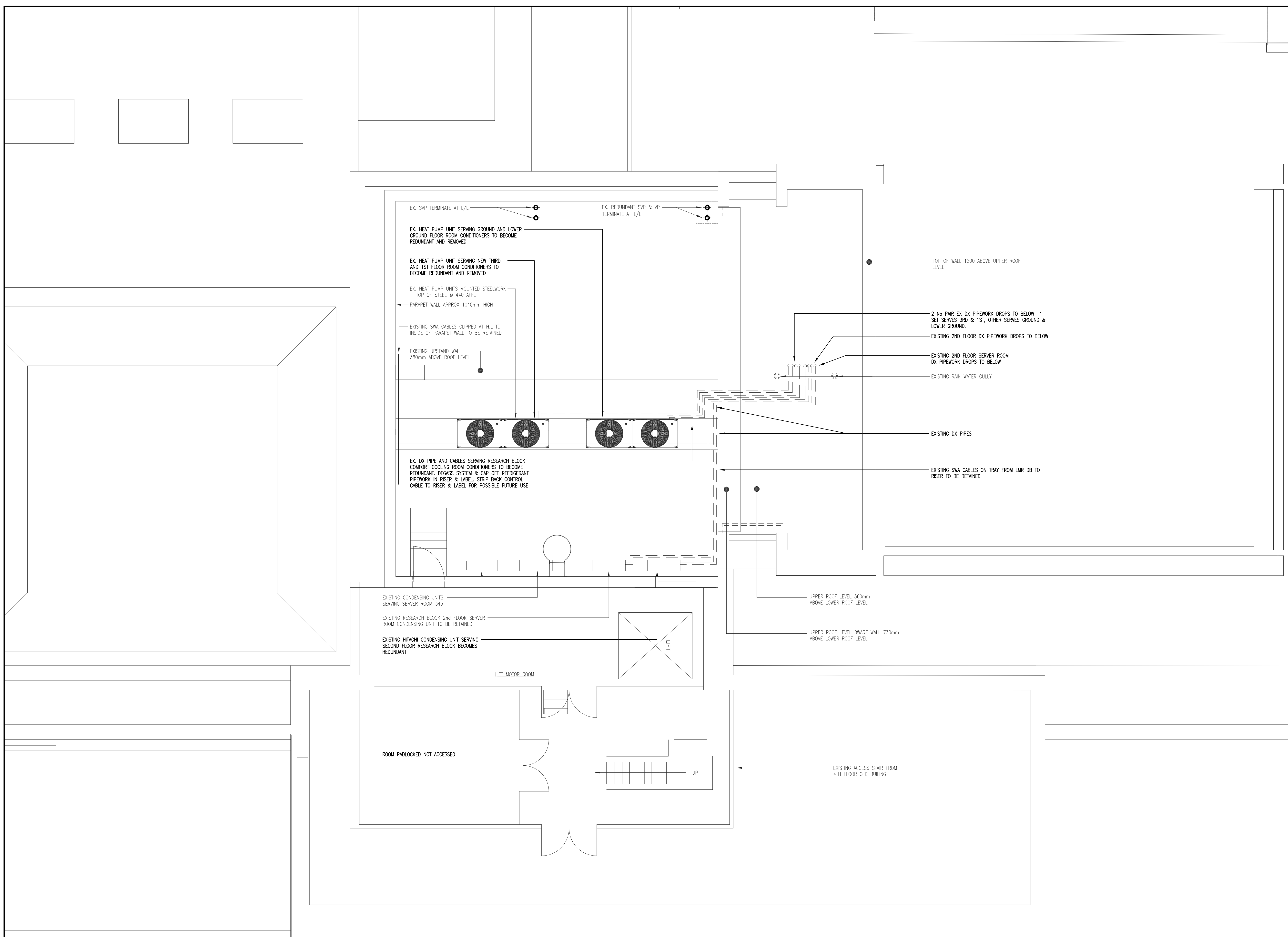


**NOTES:**

1. THIS DRAWING IS THE PROPERTY OF HITEK CONSULTANTS LIMITED AND IS PROTECTED UNDER THE COPYRIGHTS DESIGNS AND PATENTS ACT 1988. ALL RIGHTS RESERVED. THIS DRAWING IS ISSUED ON CONDITION THAT IT IS NOT COPIED, REPRINTED OR REPRODUCED, WHOLLY OR IN PART, WITHOUT THE CONSENT OF HITEK CONSULTANTS LIMITED.
2. DO NOT SCALE FROM THIS DRAWING. ALL DIMENSIONS AND SETTING OUT TO BE TAKEN FROM ARCHITECTURAL DRAWINGS.
3. THIS DRAWING SHALL BE READ IN CONJUNCTION WITH THE ARCHITECTS, STRUCTURAL ENGINEERS AND ALL OTHER SERVICES DRAWINGS.
4. THE INFORMATION CONTAINED ON THIS DRAWING HAS BEEN PRODUCED FROM A NON DESTRUCTIVE VISUAL SURVEY AND RECORD DOCUMENTATION ONLY. IT IS THE CONTRACTORS RESPONSIBILITY TO VERIFY ALL INFORMATION PRIOR TO ANY SERVICES BEING ISOLATED STRIPPED OUT OR ALTERED.
5. EXISTING VRY HEAT PUMPS TO BE REMOVED OR TEMPORARILY RELOCATED TO SUIT NEW ROOF MOUNTED AHU AND CHILLER PLANT IF PHASED FLOOR REFURBISHMENT WORKS TO BE UNDERTAKEN.



P2	24.03.20	PRELIMINARY ISSUE - UPDATED AFTER SITE SURVEY	FMc	FMc
P1	03.10.19	PRELIMINARY ISSUE	CAM	FMc
Rev	Date	Details	By	Chd

**HITEK**  
Consultants

**Hitek Consultants Ltd**  
Chartered Building Services Consulting Engineers  
The Stables  
Parsonage Farm  
Hollow Hill Lane  
Iver, Bucks  
SL0 0JW

T 01753 650 310  
T 0844 880 5701  
F 0844 880 5702  
E info@hitekconsultants.co.uk  
cad@hitekconsultants.co.uk  
www.hitekconsultants.co.uk

Project  
**SOAS UNIVERSITY of LONDON  
RESEARCH BLOCK  
FEASIBILITY STUDY**

Client  
**SOAS UNIVERSITY of LONDON**

Architect  
**KENDALL KINGSCOTT**

Title  
**RESEARCH BLOCK - ROOF  
EXISTING CONDENSING UNITS**

Scale	1:50 @ A1	Drawing no.	5974/M500
Date	SEPT 2019	Revision	P2
Designed	FMc	Cod ref	5974M500-P2
Drawn	CAM	Checked	DTS

COPYRIGHT NOTICE  
THIS DRAWING REMAINS THE PROPERTY OF HITEK CONSULTANTS LIMITED. COPIES OF THIS DRAWING OR PARTS THEREOF ARE PROHIBITED WITHOUT EXPRESS PERMISSION

