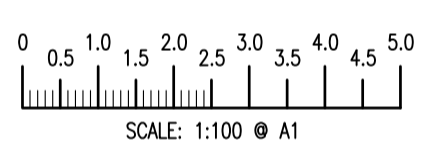
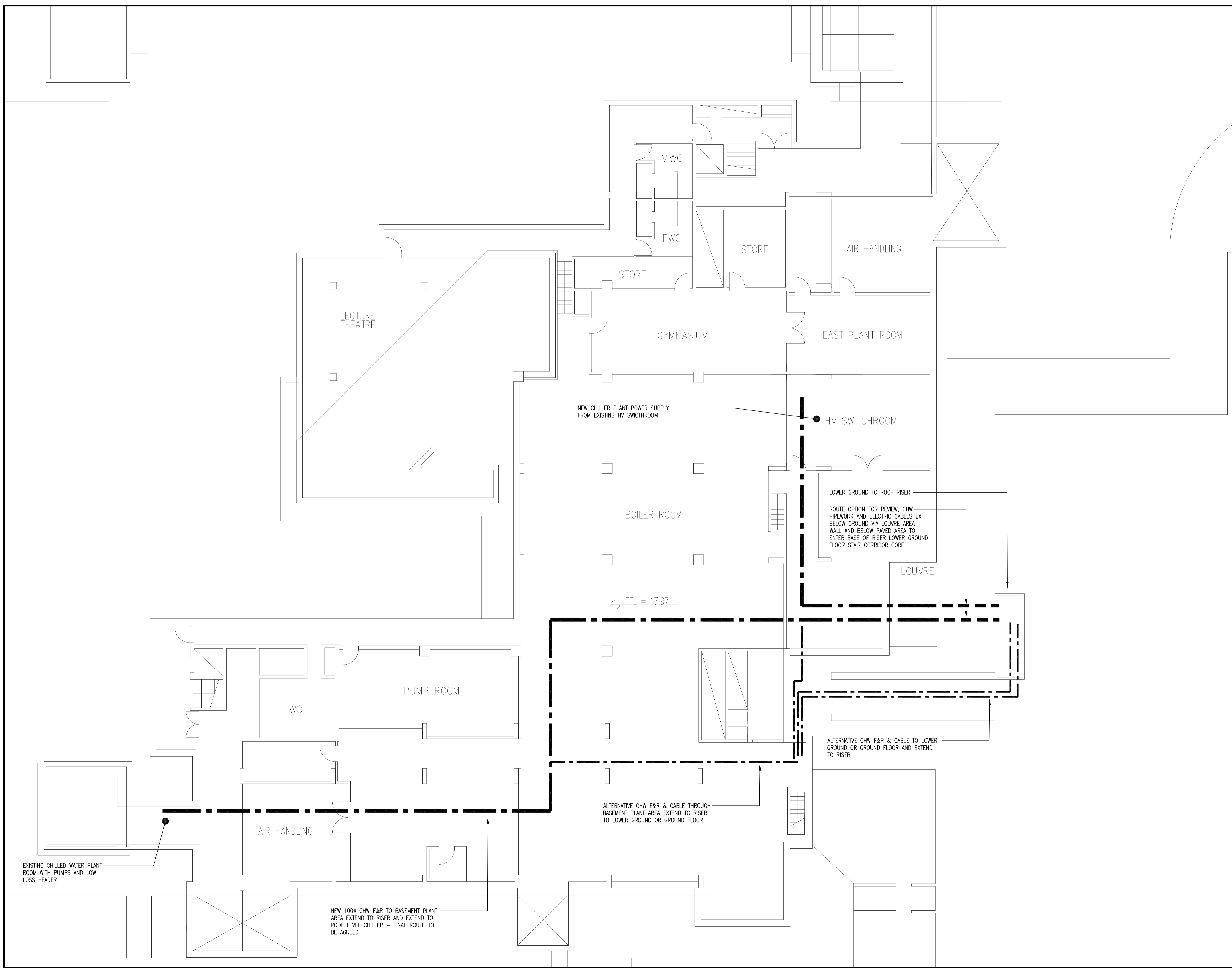


- NOTES:**
1. THIS DRAWING IS THE PROPERTY OF HITEK CONSULTANTS LIMITED AND IS PROTECTED UNDER THE COPYRIGHTS DESIGNS AND PATENTS ACT 1988. ALL RIGHTS RESERVED. THIS DRAWING IS ISSUED ON CONDITION THAT IT IS NOT COPIED, REPRINTED OR REPRODUCED, WHOLLY OR IN PART, WITHOUT THE CONSENT OF HITEK CONSULTANTS LIMITED.
  2. DO NOT SCALE FROM THIS DRAWING. ALL DIMENSIONS AND SETTING OUT TO BE TAKEN FROM ARCHITECTURAL DRAWINGS.
  3. THIS DRAWING SHALL BE READ IN CONJUNCTION WITH THE ARCHITECTS, STRUCTURAL ENGINEERS AND ALL OTHER SERVICES DRAWINGS AND SPECIFICATIONS.
  4. THE INFORMATION CONTAINED ON THIS DRAWING HAS BEEN PRODUCED FROM A NON DESTRUCTIVE VISUAL SURVEY AND RECORD DOCUMENTATION ONLY. IT IS THE CONTRACTORS RESPONSIBILITY TO VERIFY ALL INFORMATION PRIOR TO ANY SERVICES BEING ISOLATED AND STRIPPED OUT.
  5. INDICATIVE PIPE AND CABLE ROUTES, FINAL ROUTES SUBJECT TO DETAILED SURVEYS.



PRELIMINARY

Rev	Date	Details	By	Chd
P1	XX.03.20	PRELIMINARY ISSUE	KJM	FMc

**HITEK**  
Consultants

**Hitek Consultants Ltd**  
Chartered Building Services Consulting Engineers  
The Stables Farm  
Parsonage Farm  
Hollow Hill Lane  
Iver, Bucks  
SL0 0JW

T 01753 650 310  
T 0844 880 5701  
F 0844 880 5702  
E info@hitekconsultants.co.uk  
cad@hitekconsultants.co.uk  
www.hitekconsultants.co.uk

Project  
**SOAS UNIVERSITY of LONDON  
RESEARCH BLOCK  
FEASIBILITY STUDY**

Client  
**SOAS UNIVERSITY of LONDON**

Architect  
**KENDALL KINGSCOTT**

Title  
**PHILIPS BUILDING - BASEMENT  
CHILLED WATER & ELECTRIC SERVICE  
ROUTE TO NEW CHILLER PLANT**

Scale  
**1:100 @ A1**

Drawing no.  
**5974M300**

Date  
**MARCH 2020**

Revision  
**P1**

Designed  
FMc

Cod ref  
5974/M300-P1

Drawn  
KJM

Checked  
GCE

COPYRIGHT NOTICE  
THIS DRAWING REMAINS THE PROPERTY OF HITEK CONSULTANTS LIMITED. COPIES OF THIS DRAWING OR PARTS THEREOF ARE PROHIBITED WITHOUT EXPRESS PERMISSION