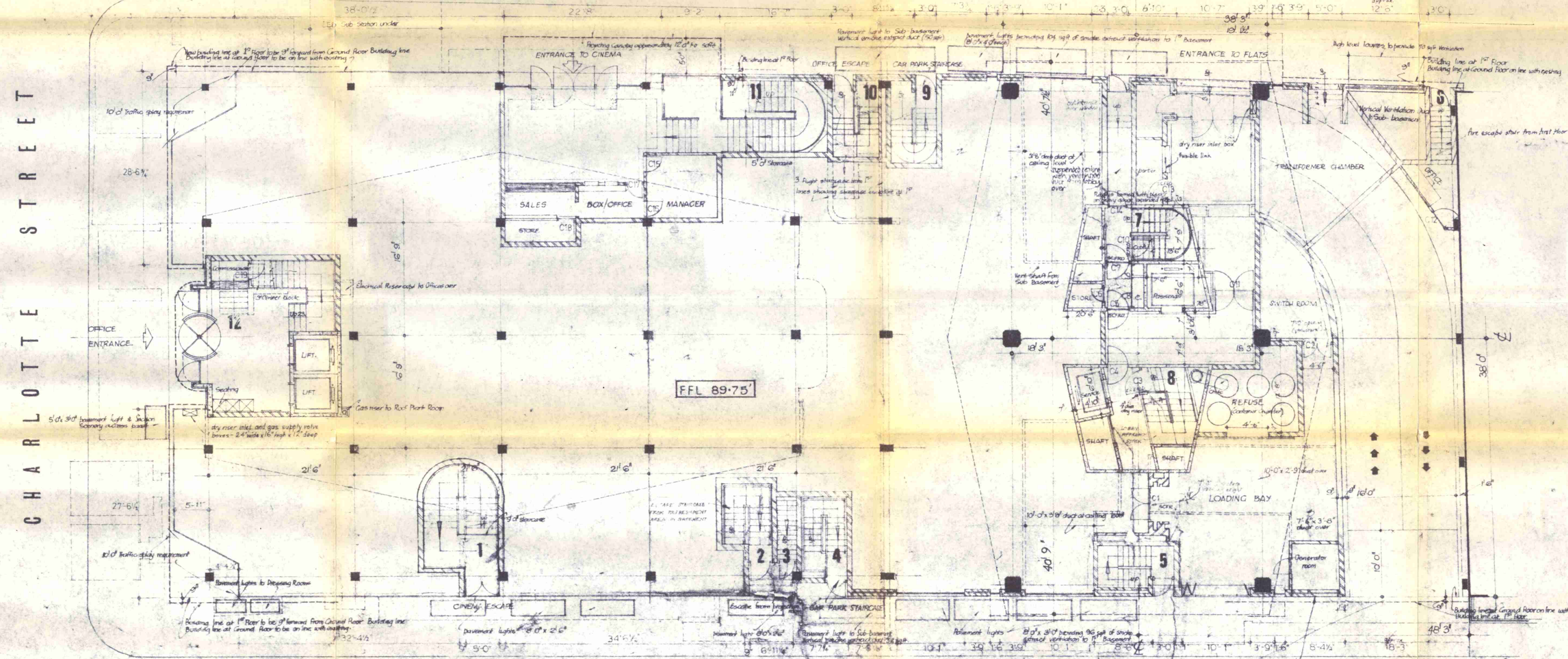
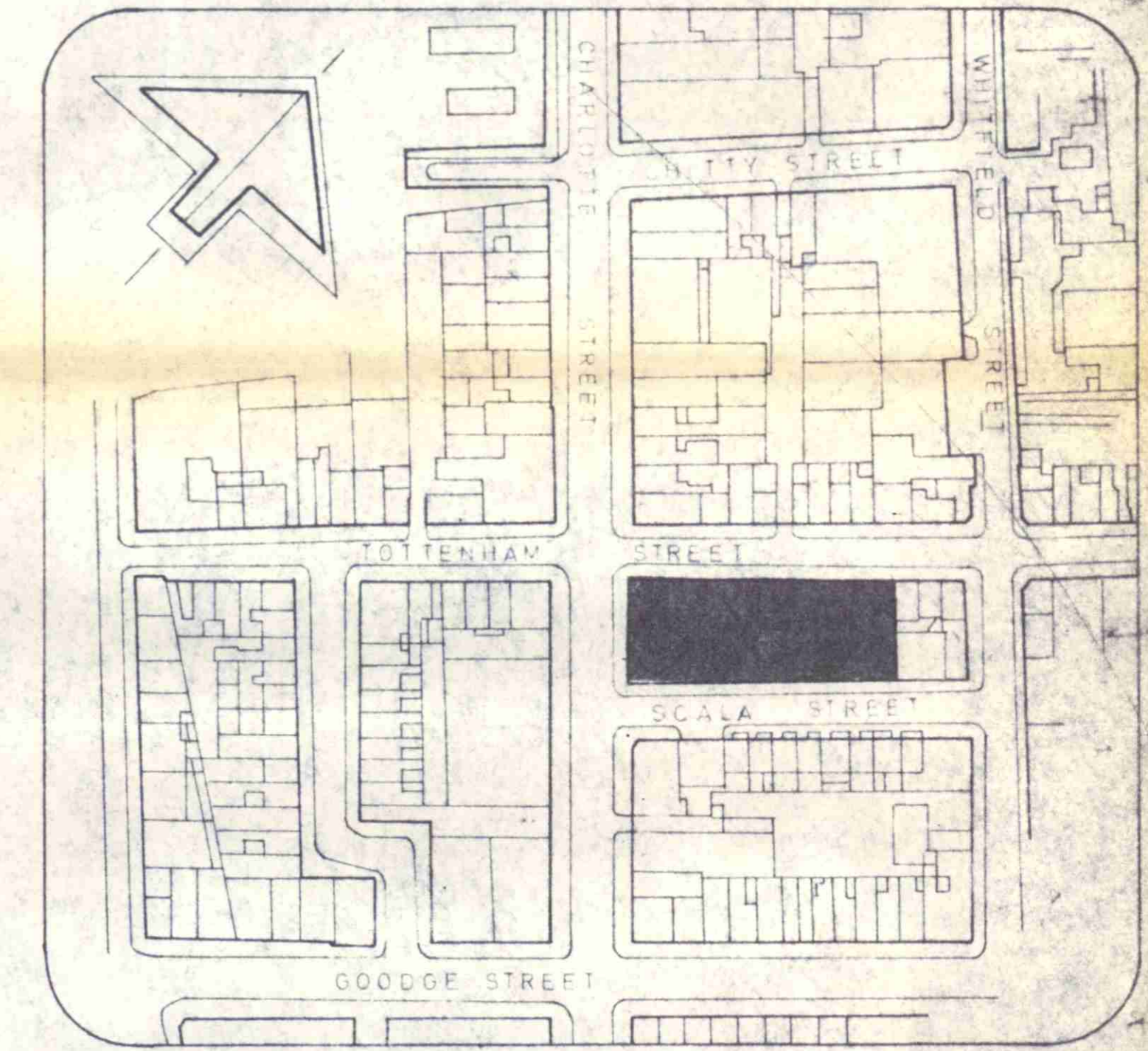


FIRST FLOOR



GROUND FLOOR

LONDON BOROUGH OF CAMDEN
TOWN AND COUNTRY PLANNING ACTS
21 DEC 1976
APPROVED
PLANS NOT APPROVED
ON BEHALF OF THE COUNCIL

CTP/112/32/A/23640
F 25/10/71

- AMENDMENTS
- A 12/7/71 ventilation ducts at ceiling level for basements. fire escape stairs added for 1st floor and basements. porter's desk store and corridor by entrance to flats.
 - B 22/8/71 escape stairs from basement refreshment area shown and exit doors for these and projection room escape.
 - C 16/8/71 escape stairs from first floor over ramp altered.
 - D 20/8/71 cinema escape stairs amended.
 - E 6/9/71 3' brick wall between porter's room and corridor behind 1st floor fire hose reel electrical and dry riser moved lobby to escape stairs from roof and between offices and main stairs both ventilated.
- 1 22/6/72 dimensions on Charlotte St. from 'top' completed & amended
- 2 21/7/72 dimensions along Scala St. from 'top' amended
- 3 18/7/72 dimensions along Scala St. from 'top' amended
- 4 21/8/72 ventilation ducts from 1st floor through roof amended & amended
- 5 22/10/72 door 25 shown on 1st floor dry riser room amended and gas supply amended & amended

56-62, CHARLOTTE STREET, LONDON, W.1.
Entertainment, Office and Flat Develop-
ment, with Basement Car Parking.
MAY 1971
scale 1/8 Drawing No 157/M

SIDNEY L. BELFER, FRIBA
Architect,
4, BLOOMSBURY SQUARE, W.C.1.