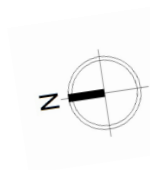
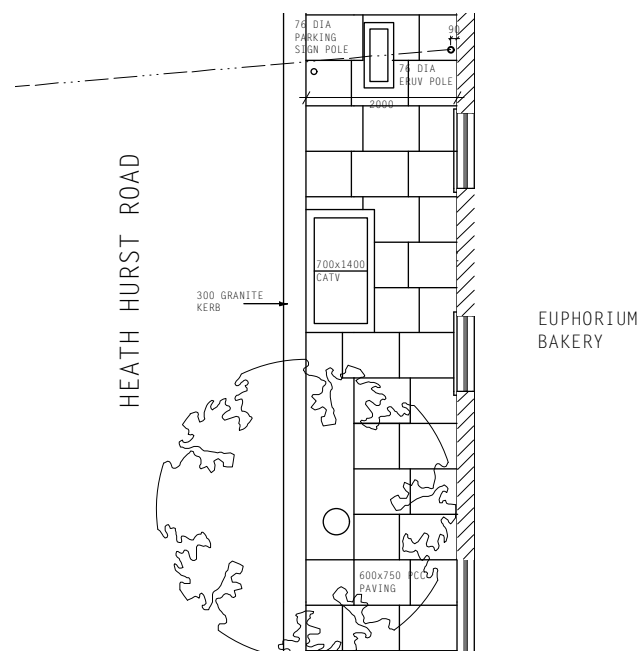


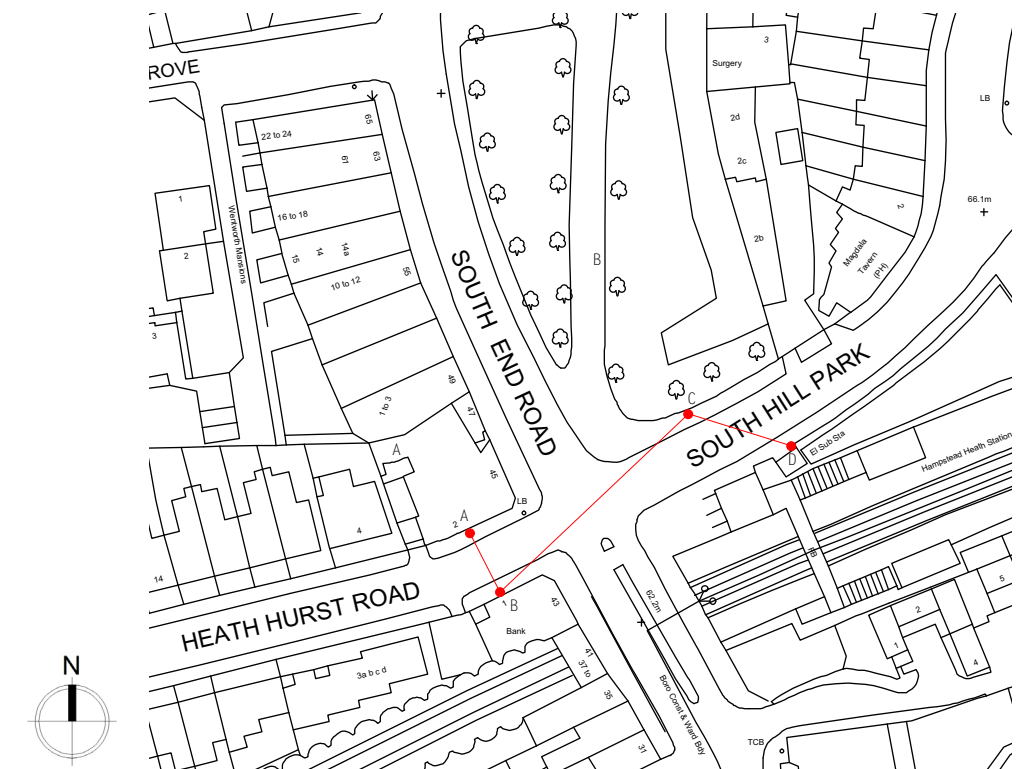


DESCRIPTION:

A 5.5-metre high, 76dia pole (A) in the footpath centrally on the brick pier between the entrance to 2 Heath Hurst Road and the window to the right with a 0.5mm filament crossing Heath Hurst Road to a matching pole (B) to the right of the telephone junction box to the flank of 1 Heath Hurst Road, with a clear nylon filament crossing South End Road to a matching pole (C) to replace the existing Controlled Parking Zone sign pole with a clear nylon filament crossing South Hill Park to a matching pole (D) at the rear of the footpath adjacent to the end corner post of the iron railings immediately to the left of the substation. Refix parking sign on new pole (C) and reinstate footpaths to match existing.



LOCAL PLAN SCALE 1:100



LOCATION PLAN SCALE 1:1250

REV'N D

DRAWING REF: 868.43A

CAMDEN ERUV - LOCATION 43 - SOUTH END ROAD

**ROSENFELDER ASSOCIATES**

Chartered Architects + Planning Consultants  
10-12 Perrins Court Hampstead LONDON NW3 (020) 7794 4425



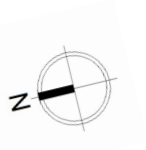
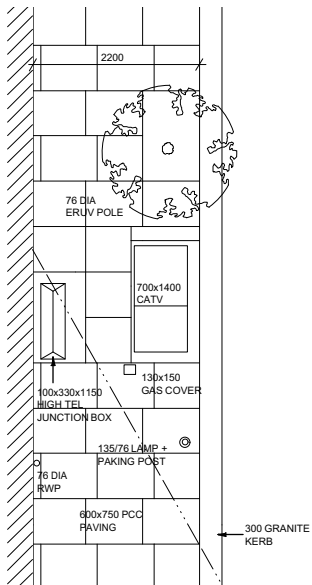
LOCATION B WITHOUT POLE



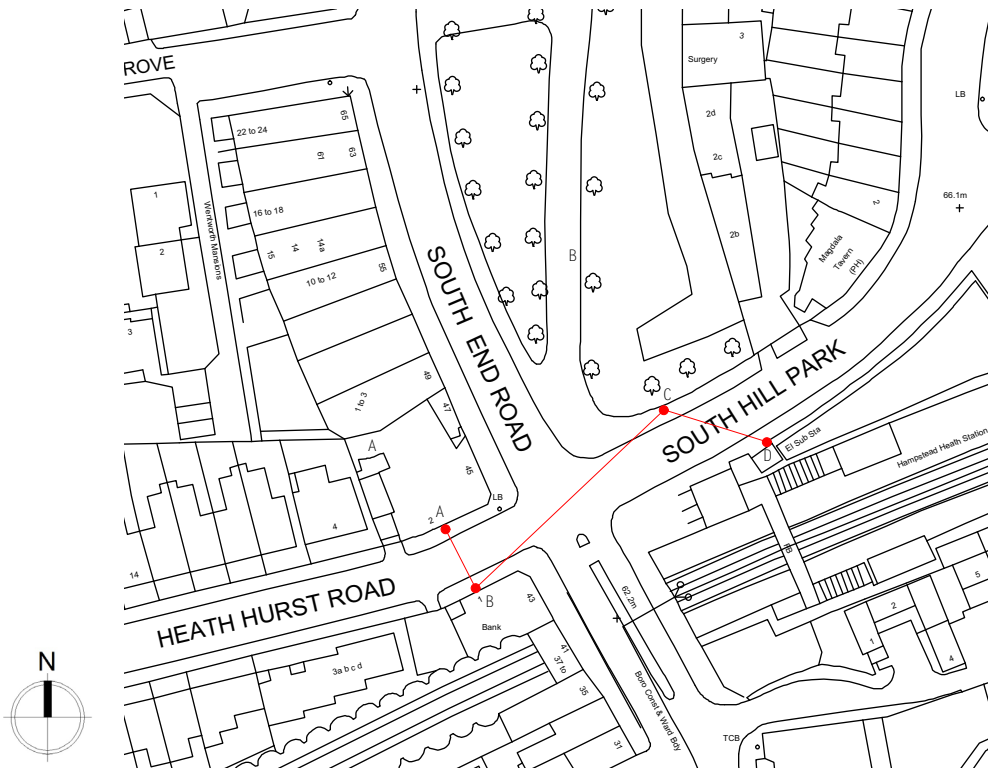
LOCATION B WITH POLE

DESCRIPTION:

A 5.5-metre high, 76dia pole (A) in the footpath centrally on the brick pier between the entrance to 2 Heath Hurst Road and the window to the right with a 0.5mm filament crossing Heath Hurst Road to a matching pole (B) to the right of the telephone junction box to the flank of 1 Heath Hurst Road, with a clear nylon filament crossing South End Road to a matching pole (C) to replace the existing Controlled Parking Zone sign pole with a clear nylon filament crossing South Hill Park to a matching pole (D) at the rear of the footpath adjacent to the end corner post of the iron railings immediately to the left of the substation. Refix parking sign on new pole (C) and reinstate footpaths to match existing.



LOCAL PLAN SCALE 1:100



LOCATION PLAN SCALE 1:1250

REV'N D

DRAWING REF: 868.43B

CAMDEN ERUV - LOCATION 43 - SOUTH END ROAD

**ROSENFELDER ASSOCIATES**

Chartered Architects + Planning Consultants  
10-12 Perrins Court Hampstead LONDON NW3 (020) 7794 4425





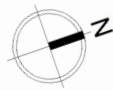
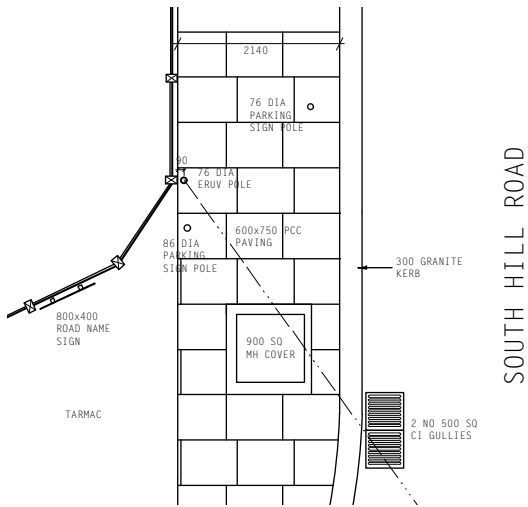
LOCATION C WITHOUT POLE



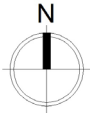
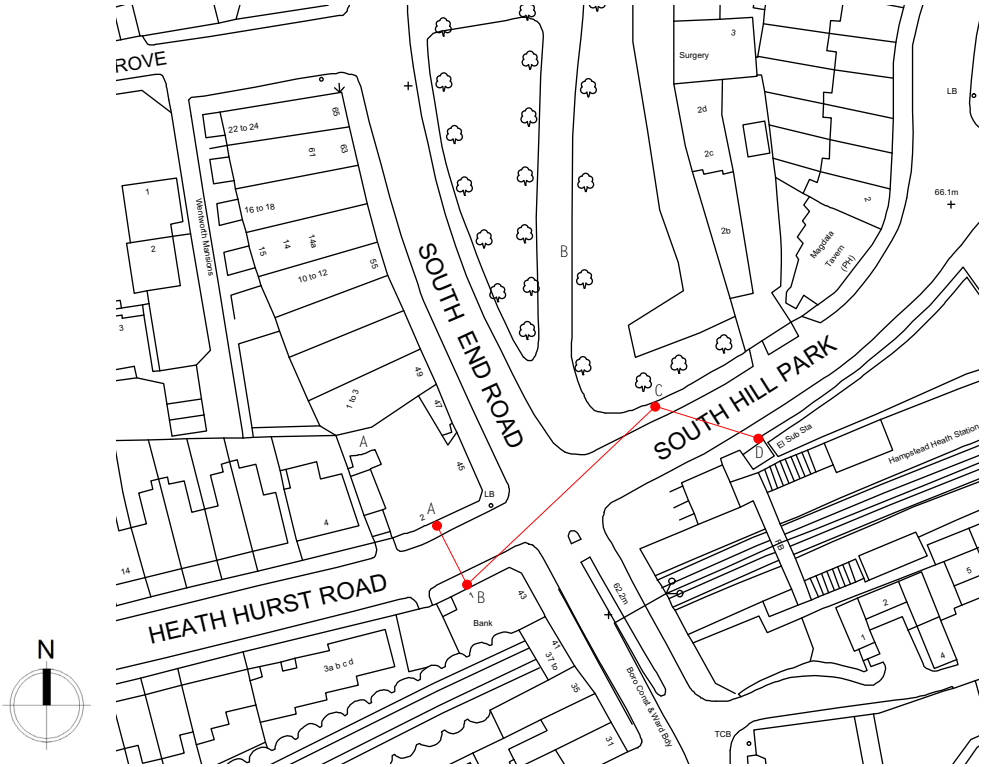
LOCATION C WITH POLE

DESCRIPTION:

A 5.5-metre high, 76dia pole (A) in the footpath centrally on the brick pier between the entrance to 2 Heath Hurst Road and the window to the right with a 0.5mm filament crossing Heath Hurst Road to a matching pole (B) to the right of the telephone junction box to the flank of 1 Heath Hurst Road, with a clear nylon filament crossing South End Road to a matching pole (C) to replace the existing Controlled Parking Zone sign pole with a clear nylon filament crossing South Hill Park to a matching pole (D) at the rear of the footpath adjacent to the end corner post of the iron railings immediately to the left of the substation. Refix parking sign on new pole (C) and reinstate footpaths to match existing.



LOCAL PLAN SCALE 1:100



LOCATION PLAN SCALE 1:1250

REV'N D

DRAWING REF: 868.43C

CAMDEN ERUV - LOCATION 43 - SOUTH END ROAD

**ROSENFELDER ASSOCIATES**

Chartered Architects + Planning Consultants  
10-12 Perrins Court Hampstead LONDON NW3 (020) 7794 4425