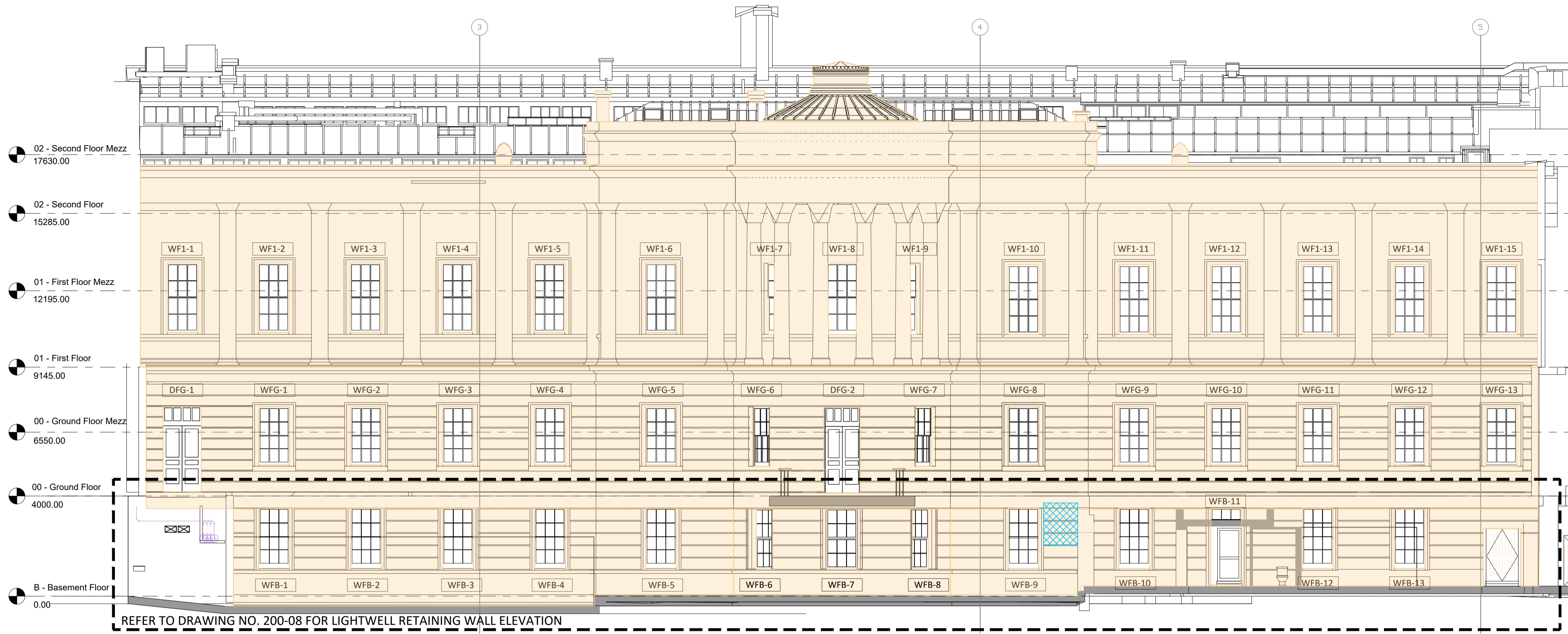


Legend

-  Hack off and replace render to Clause M20/110
-  Rake out and repoint to Clause C41/820. Trial samples - 3 number @ 1m2 each to be provided for approval.
-  Remove and reform new mortar bead to rear elevation windows
-  Light clean to stone and brickwork to clause C40/215. Trial sample 3 number @ 1m2 each to be provided for approval to clause C40/230.
-  Brickwork stitch replacement to clause C41/365
-  Specialist two coat render repairs to internal face of lightwell retaining wall comprising undercoat two part hydraulic lime to 5 part sharp and top coat of 1 part hydraulic lime and 3 part sharp sand.
-  Cut out damaged slate DPC and replace with new natural slate bedded and pointed in 1:1.6 mortar to existing details




FRONT ELEVATION
Proposed Repair

1:100



REAR ELEVATION
Proposed Repair

1:100 

rev.	description	date	chkd.
C	Specification notes revised.	09/03/20	
B	New hopper and downpipe legend omitted.	28/02/20	
A	Light clean to London Stock Brickwork omitted. Light clean to parapet wall stone coping added.	17/02/20	

client : **UCL**

project : **The Slade School of Fine Art
Gower St, London, WC1E 8BT
External Refurbishment**

drawing title : **Front and Rear Elevations
Proposed Elevation Repairs**

FulkersBaileyRussell
london | gravesend | brighton | bristol | leeds | reading | manchester
info@fulkers.co.uk // www.fulkers.co.uk // 01474 369175

drawn:SL chkd: date:Jan 2020

status: **Planning** scale: 1:100 @ A1

proj no: **19-2306**

drn no: **200-07** rev no: **C**