



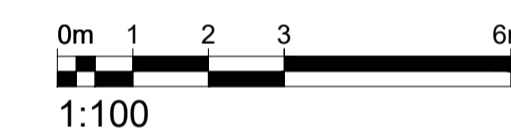


Note:

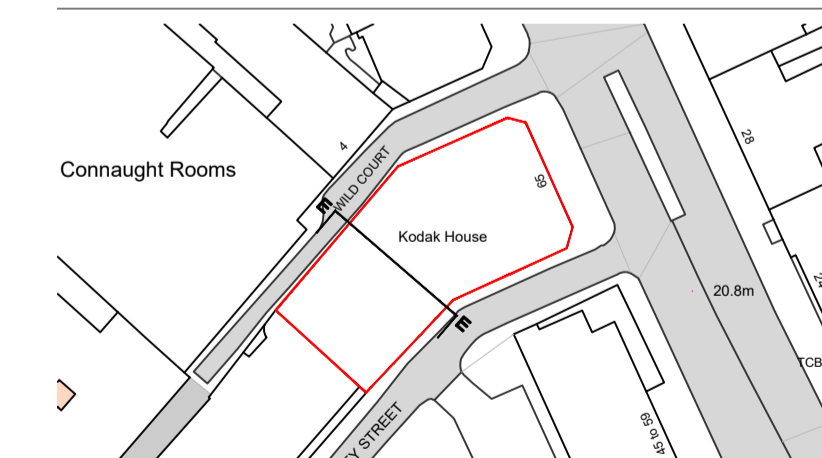
1. -
2. New projecting PPC black metal entrance canopy with integrated signage and lighting.
3. New critical style metal framed, glazed entrance doors. Black colour.
4. New structural infill supported by new steel beams.
5. New double glazed critical style metal slim line windows. Black colour.
6. New 7th floor mansard storey. Standing seam zinc cladding. Bronze colour finish.
7. Existing 6th floor structure retained and re-clad with new standing seam zinc cladding - bronze colour finish
8. New double glazed, metal framed full height windows. Black colour
9. New PPC black metal spandrel panels.
10. New louvered metal plant screen. PPC Grey colour
11. Existing slab and structure retained.
12. New structural infill.
13. New lift shaft.
14. New vertical core extension. Glazed bricks to match existing Wild Court facade
15. New raised plant deck

KEY :

-  Existing Walls
-  Proposed Walls
-  Existing roof profile
-  MEPH services



| P7 | Issued for Planning - Plant screen annotations updated | AC | 24.03.20 |
|------|--|----|----------|
| P6 | Issued for Planning - Plant screen set back | AC | 18.03.20 |
| P5 | Issued for Planning - Plant screen amended | AC | 06.03.20 |
| P4 | Issued for Planning | AC | 28.11.19 |
| Rev. | Description. | By | Date |



Client
Kings Keeley Limited C/o Clearbell Capital LLP
Project
65 Kingsway - Base Scheme

| Proposed Section EE | | | |
|---------------------|------------------|------------|--------------------------|
| Status | Purpose of issue | RIBA stage | |
| S2 | For Planning | 2 | |
| Project No. | Drawn | Checked | Scale |
| 1914 | FB | TJ | 1:100 @ A1 1:200 @ A3 |
| Rev. | RIBA stage | | |
| P7 | 2 | | |

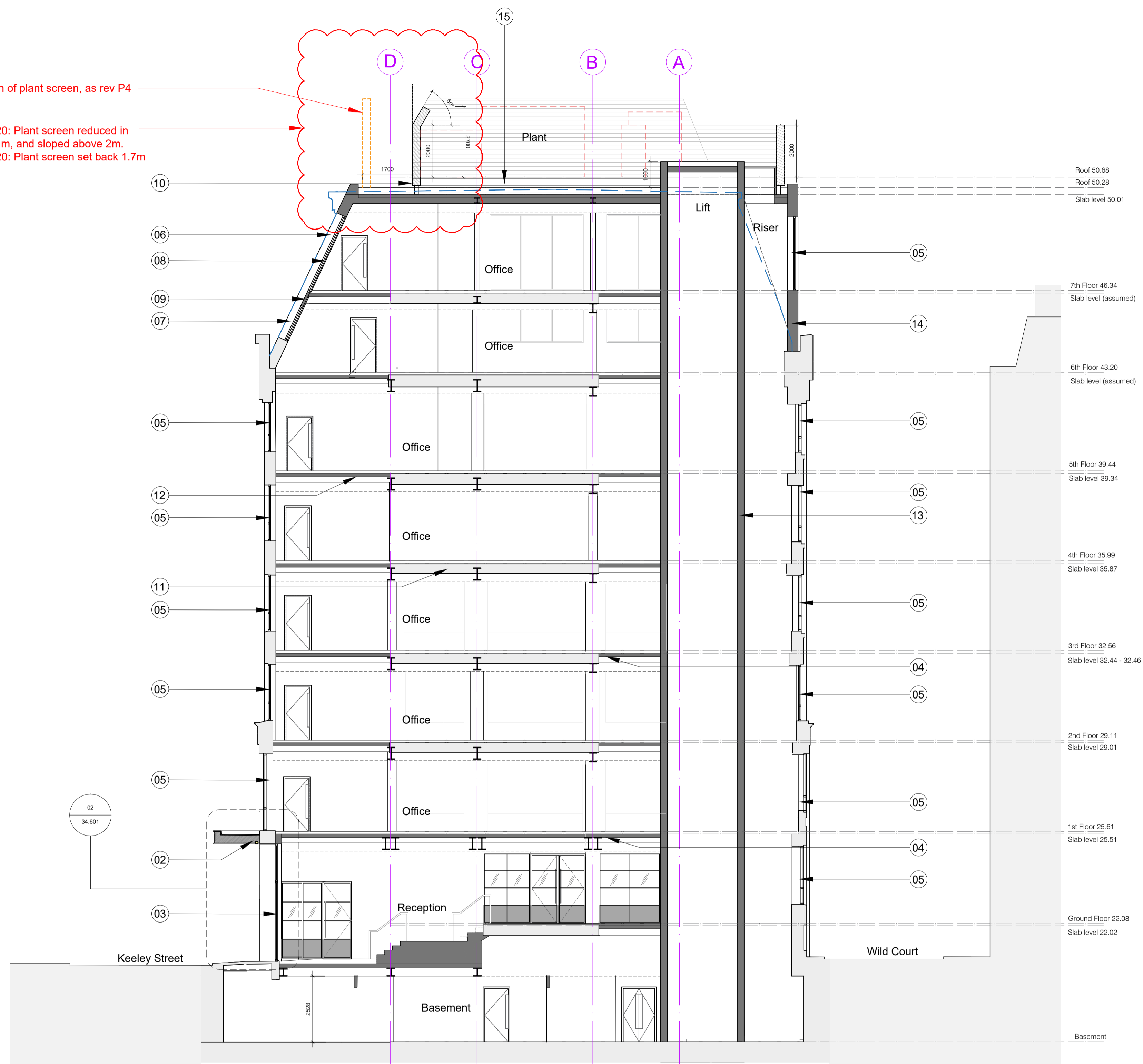
Drawing No.
1914-BG-01-ZZ-DR-A-20.255

Do not scale from this drawing. The Contractor is to take and check all dimensions on site before work commences. Discrepancies must be reported to the Architect. Subcontractors must verify all dimensions on site before making a shop drawing or commencing manufacturing. This drawing is copyright. ©

© Copyright Barr Gazetas Ltd.
A 10 Heddon Street, London, W1B 4BG
T 0207 638 5991
W www.barrgazetas.com

Original position of plant screen, as rev P4 28.11.19

Rev P5 06.03.20: Plant screen reduced in height by 300mm, and sloped above 2m.
Rev P6 18.03.20: Plant screen set back 1.7m



EE Proposed Section EE
20.202 1:100@A1, 1:200@A3