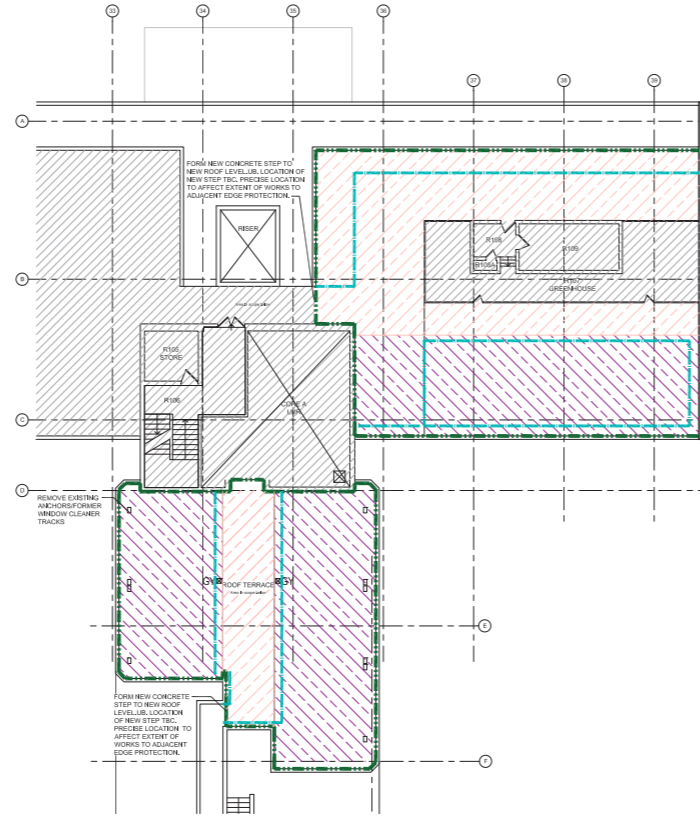


## 4.2.3 Design Proposals - External Works

### Roof Scope

To further enhance the thermal comfort and building performance, thermal upgrades are proposed to the existing roof Level 10. The existing paving tiles and ballast will be carefully removed and retained for reinstatement, and new waterproofing and insulation installed.

Works will be carried out around the existing glasshouse which will be retained.



Existing Level 10 roof



Existing Level 10 roof

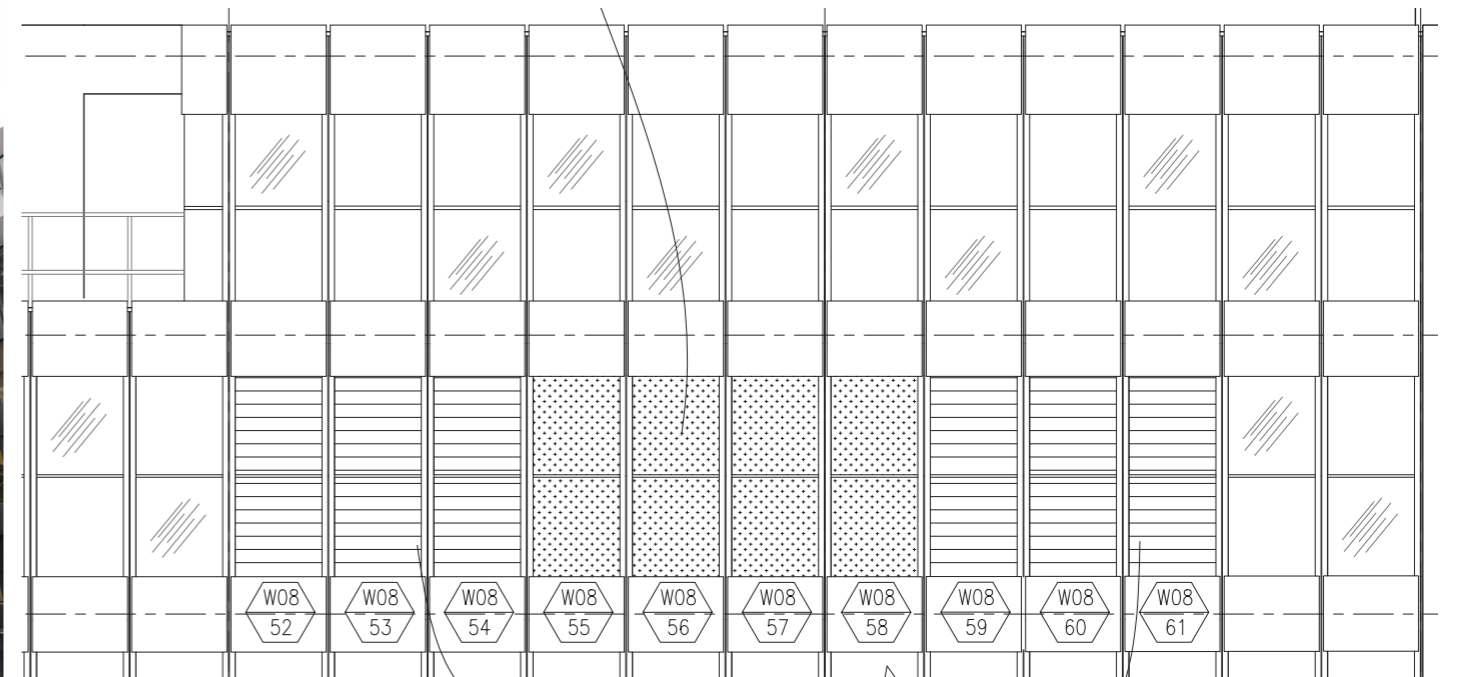
### Louvres

As part of the proposal, a new plant room is required to Level 8. To provide air transfer to this room, 6no louvres are proposed on the South elevation. The proposed louvres are aluminium, polyester powder coated to match the existing facade colour.

This installation will be as previous Phase 1 designs and approved installation principles.



Photograph of existing elevation



Proposed elevation

## 4.2.3 Design Proposals - External Works

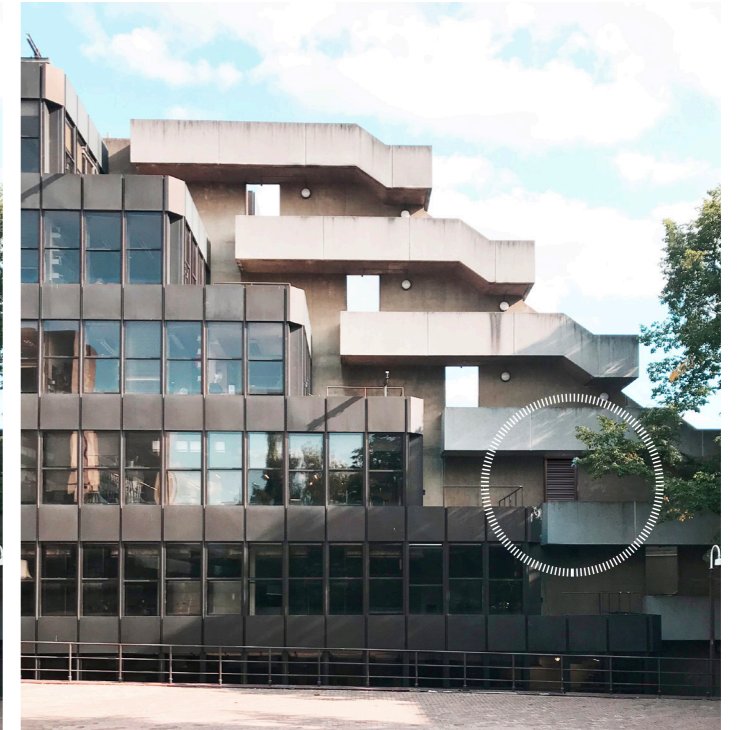
### Security Gate to Wing Stairs

A new external Gate to level 5 terrace is proposed to secure the upper level terraces of the wing, preventing un-authorised access. The gate would be managed by UCL IOE and be kept open during the day and closed in the evening to provide security.

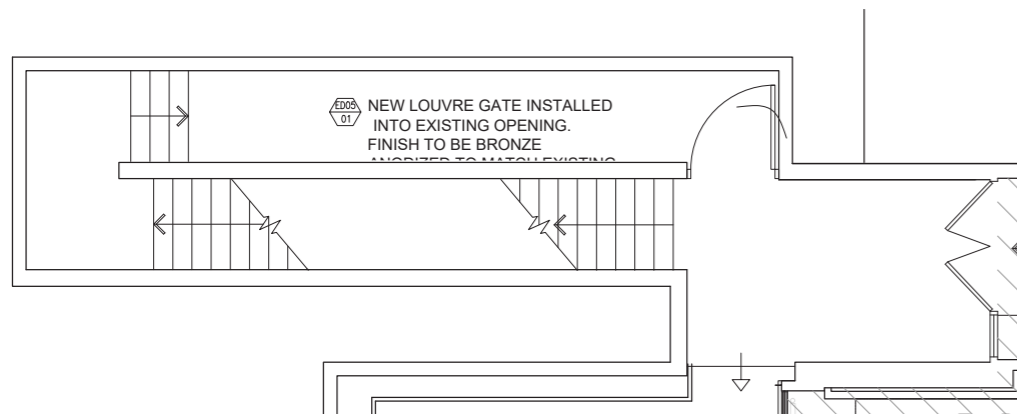
The new gate would be a PPC aluminium louvred gate, to match the existing level 4 Louvres.



View of the Northern side of the Wing - Level 5



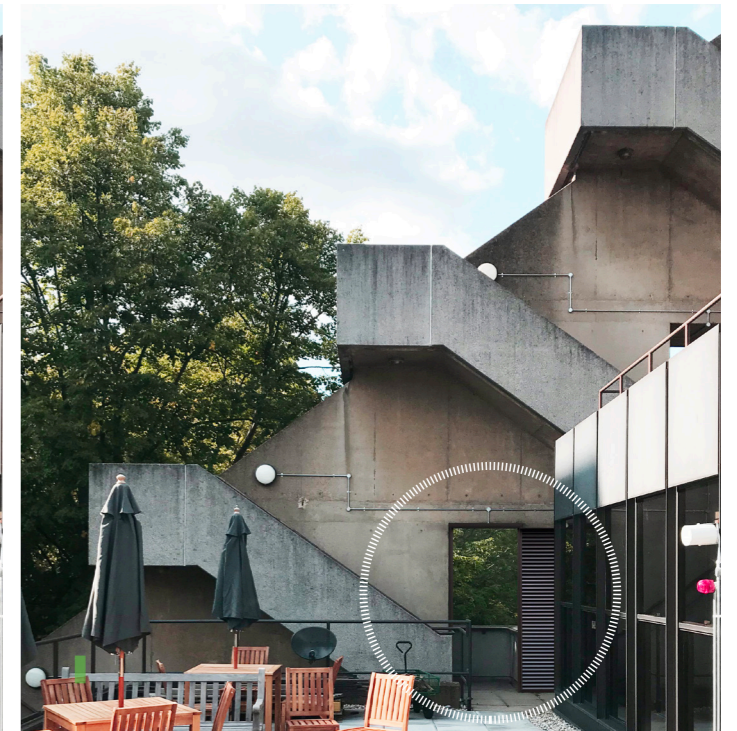
View of the Northern side of the Wing - Level 5 illustrating proposed gate



Level 5 plan highlighting location of the proposed gate



Louvred gate to existing opening - View from level 5 terrace



Louvred gate to existing opening - View from level 5 terrace. (open gate)

# 5

## Access and Movement

## 5 Access and Movement

### Inclusive Design

The Phase 2 proposals have been designed to be inclusive and accessible throughout and for people with varying needs in accordance with Approved Documents B, K and M and BS8300:2009

With the assistance of the UCL IOE's Access and Inclusion Manager, the project team are taking into consideration the broad range of needs that a truly accessible place can support including but not limited to: mobility, visual and hearing impairments, selfcare, sanitary provision, mental health, communication, learning support, gender and identity requirements.

The proposed works and facilities will complement and meet the needs of the existing community while at the same time serving a new cohesive community in the future.

### Circulation

Lift lobbies which connect circulation routes, staircases and sanitary spaces will be retained. New internal doors will be sized to accord with AD M and will have suitable vision panels and door furniture. Corridors will be at least 1500 wide and are designed to comply with AD M.

### Internal finishes, fixtures and fittings

Internal finishes will be in line with Phase 1 areas and consider visual contrast, lighting and materials for features such as walls, ceilings and floors. Fixtures and fittings, including ironmongery and controls will visually contrast with their surrounds, be usable by people with limited dexterity and reachable by those who are seated or standing.

### Phase 2 Application 2A

#### Sanitary Facilities

Sanitary facilities will be designed in detail to be in accordance with AD M and BS 8300. Toilets are located in standard accommodation clusters adjacent to the building Cores A and B. Each cluster will provide a cubicle that is suitable for someone with an ambulant disability and standard fixtures and fittings, such as handles and taps, will be specified to be accessible in accordance with BS 8300:2009 and AD M. 1no fully accessible toilet will be located to each core and will be designed to meet the requirements of people with a variety of impairments. Manoeuvring space within toilet clusters will meet the requirements, enabling access to any within facilities.