

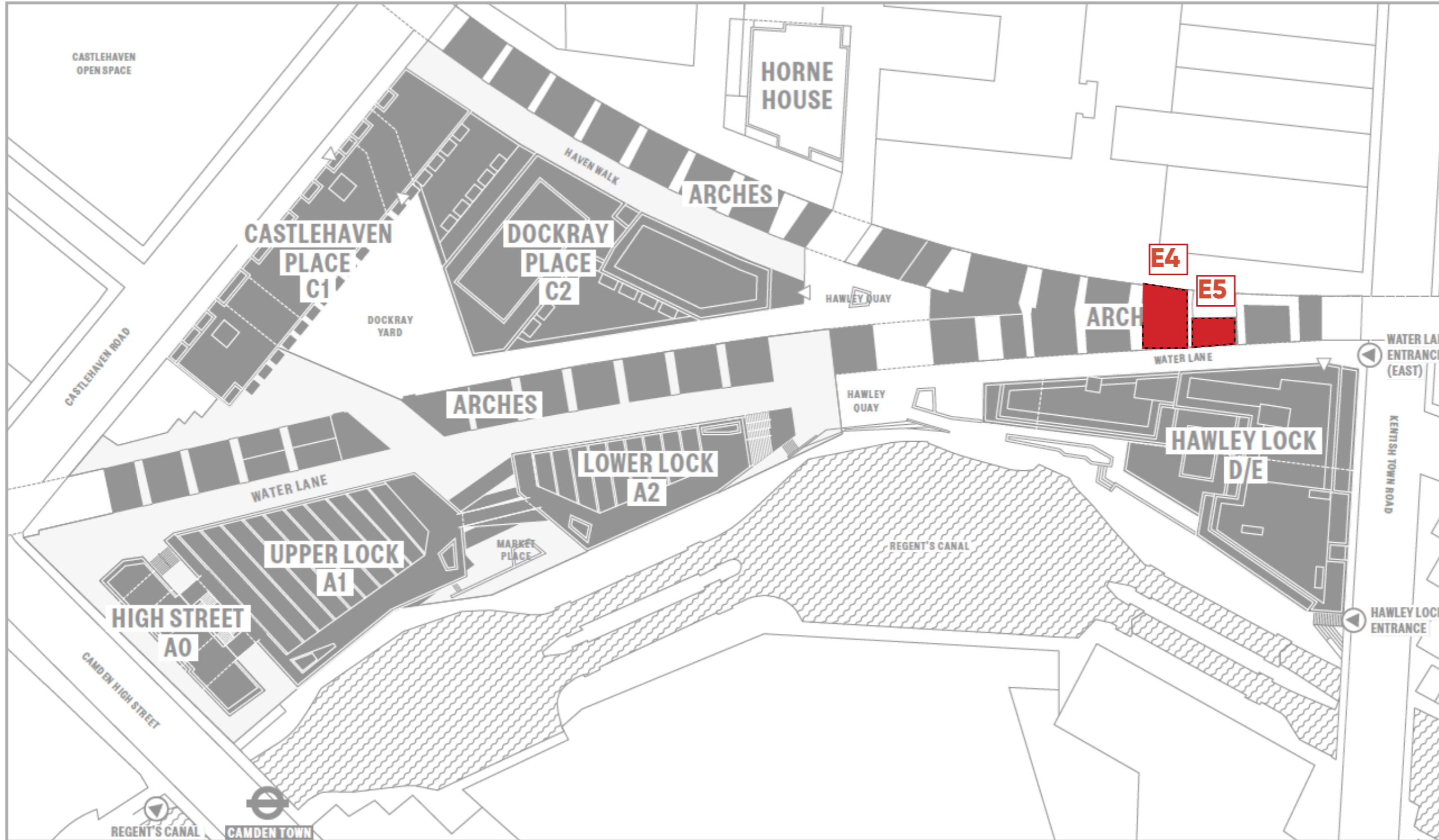
MASTERPLAN ARCHES - bike stores location



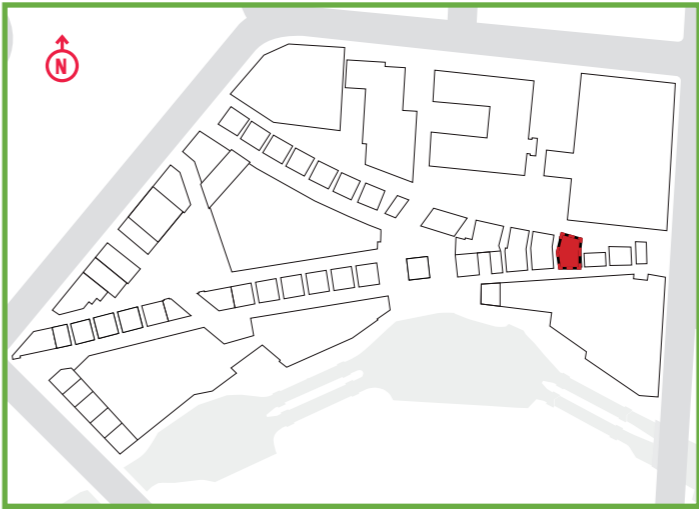
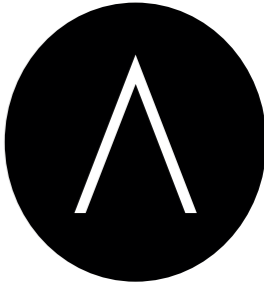
Compared to the previous condition 32 discharge details ((planning permission 2012/4628/P) with a bike capacity of **176 bikes**, and the previous to NMA approved scheme where the bike stores was in N5 with a total of **184 spaces**, the NMA approved scheme has now **186 bikes (138 in E4 and 48 in E5)**, as 2 additional spaces have been achieved due to the different configuration / major capacity of arch E4.

The two arches designated as bike stores need to have a more practical and secure access, the **steel side folding shutter** manually controlled and very easy and light to manoeuvre.

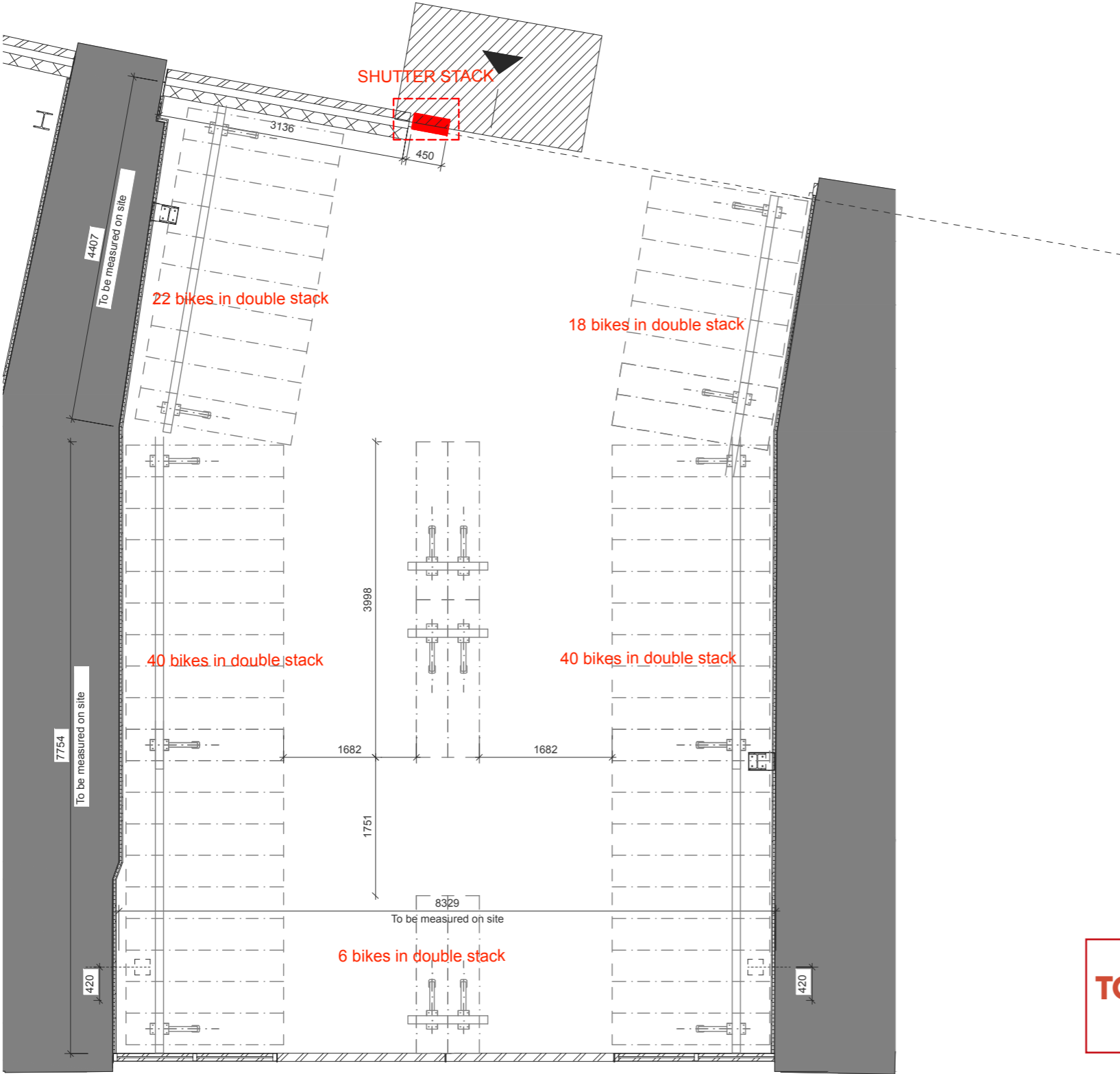
NOTES |



BIKE STORE E4 - PLAN



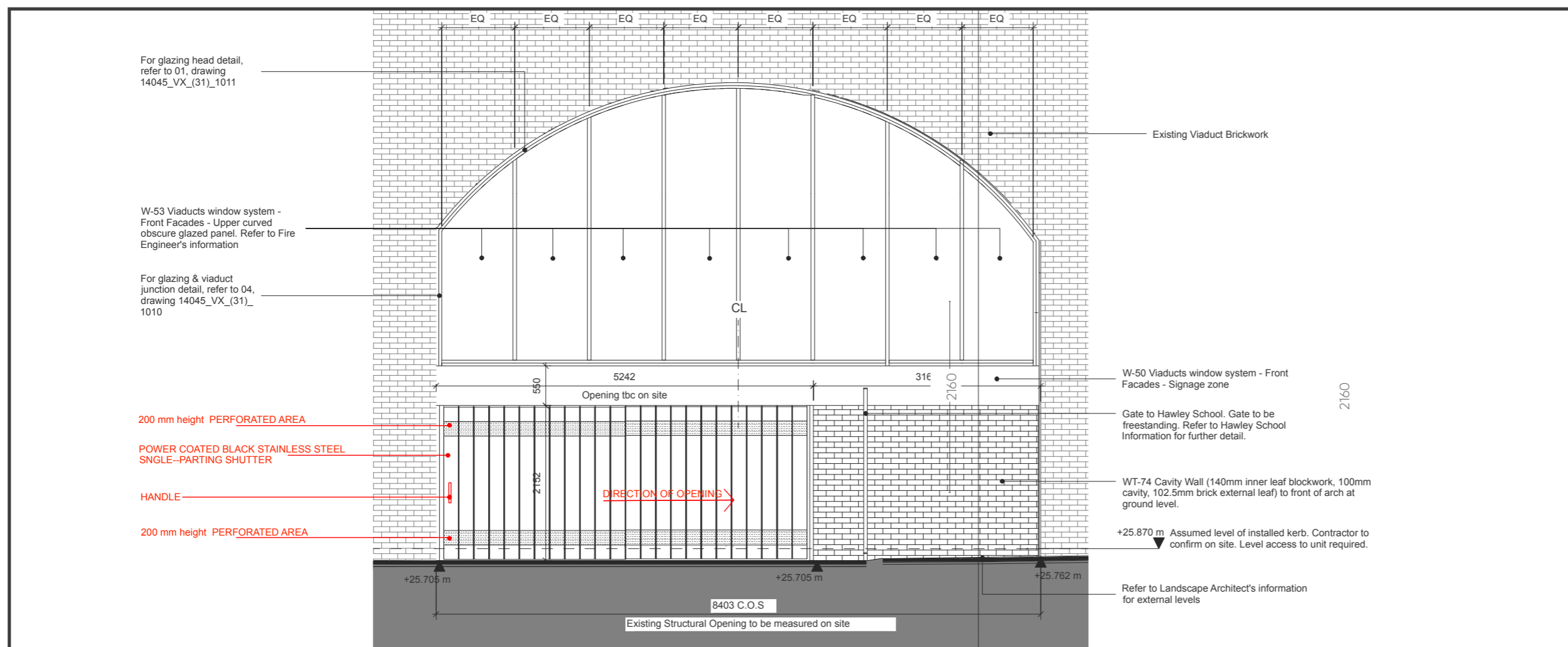
NOTES |



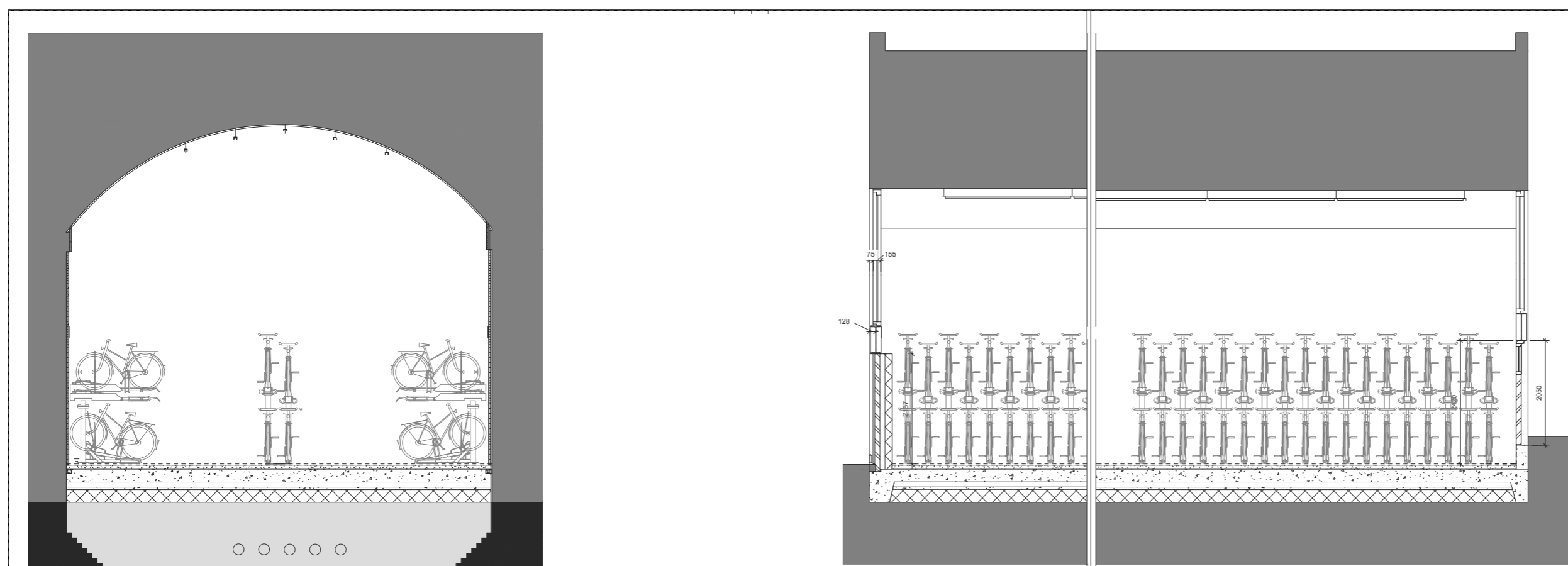
TOTAL NUMBER OF BIKES = 138

NOT IN SCALE -dimension in millimetres

BIKE STORE E4 - ELEVATION & SECTIONS



NOTES |

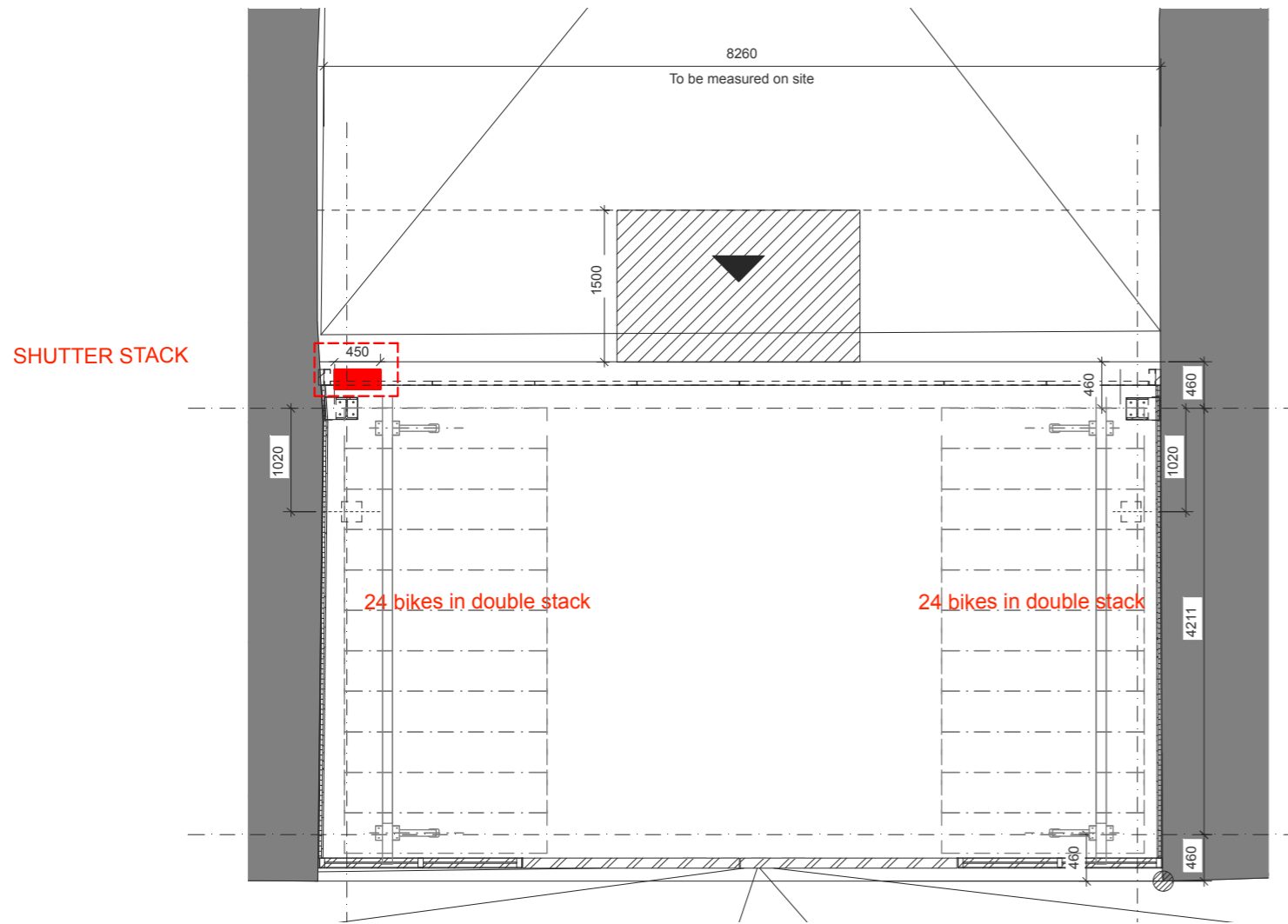
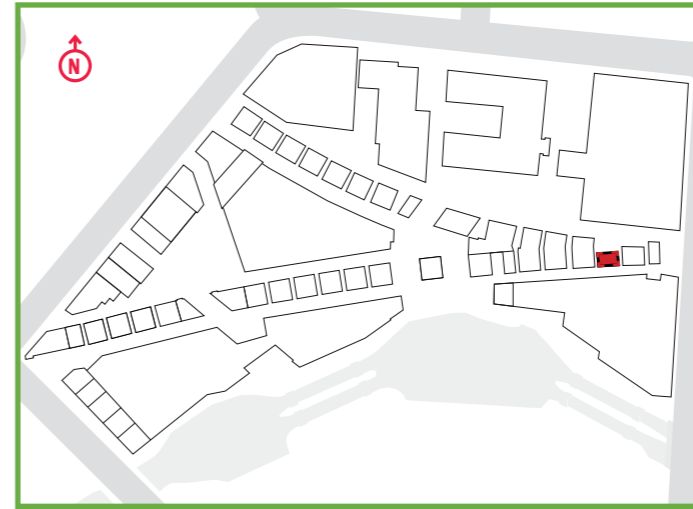


NOT IN SCALE - dimension in millimetres

BIKE STORE E5 - PLAN



NOTES |



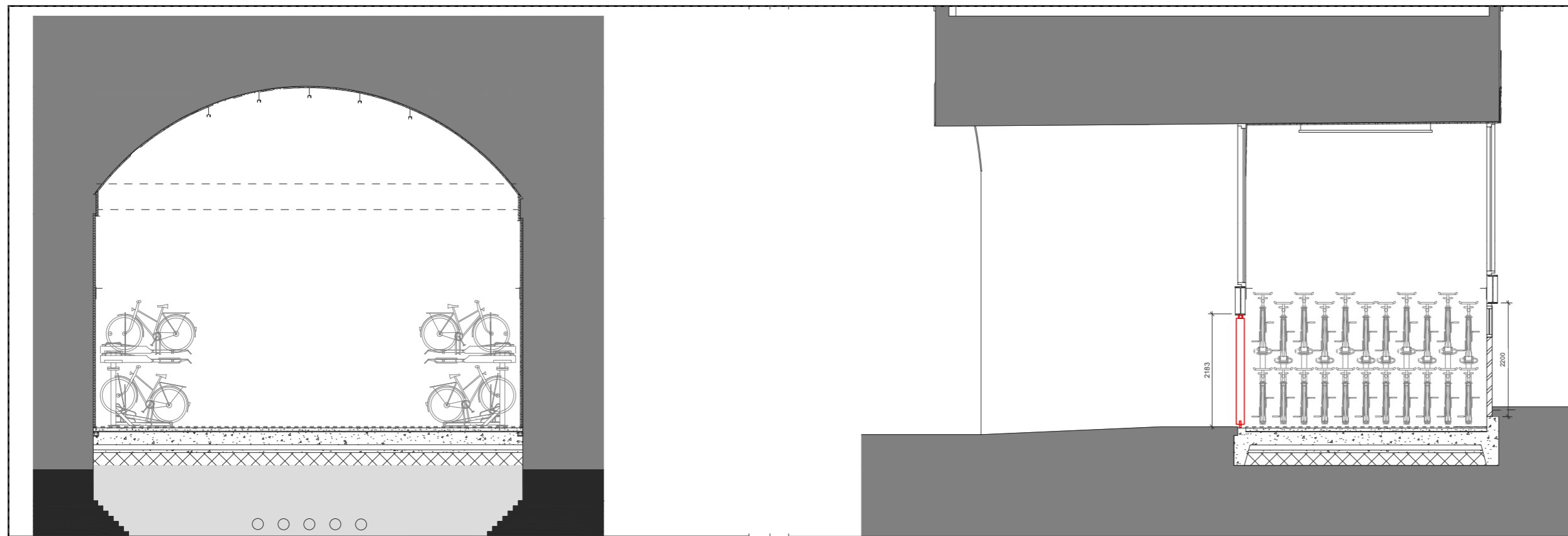
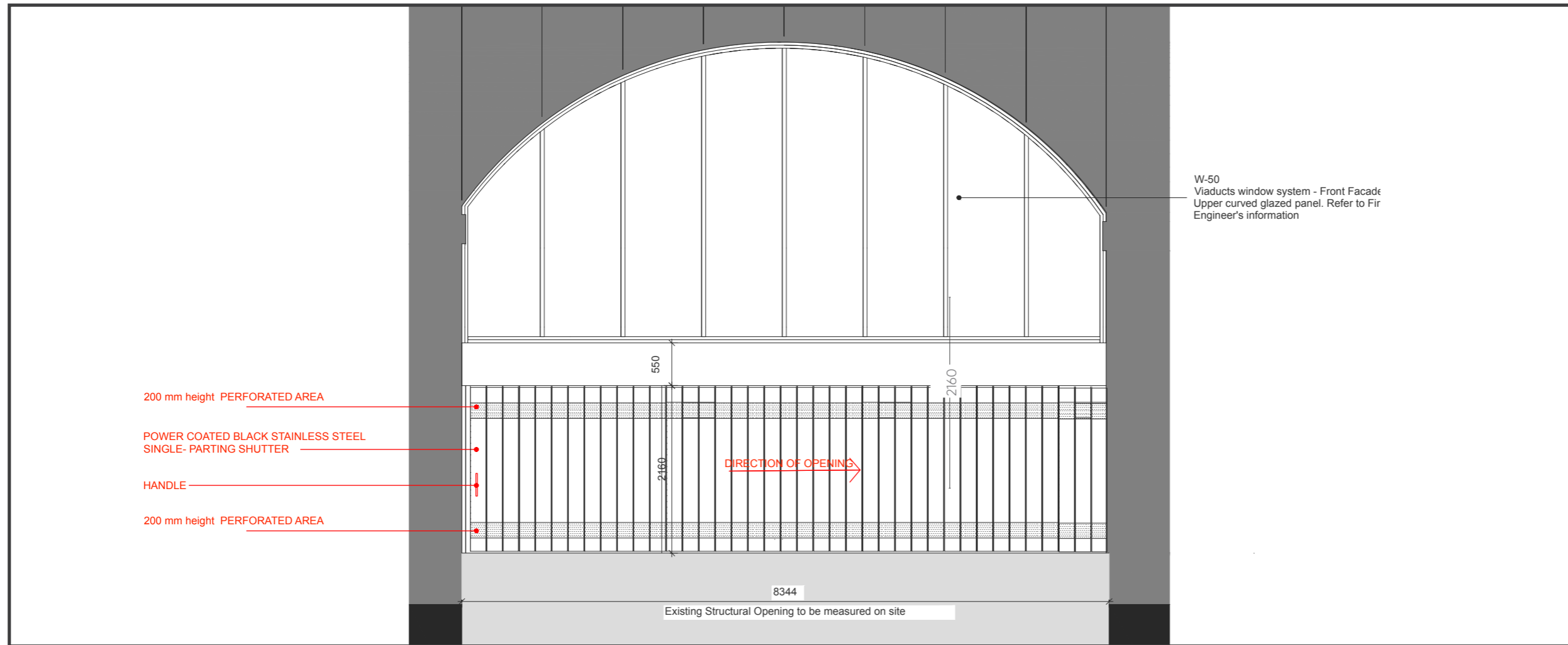
NOT IN SCALE -dimension in millimetres.

TOTAL NUMBER OF BIKES = 48

BIKE STORE E5 - ELEVATION & SECTIONS



NOTES |



NOT IN SCALE -dimension in millimetres

SHUTTERS DETAILS & REFERENCE IMAGES



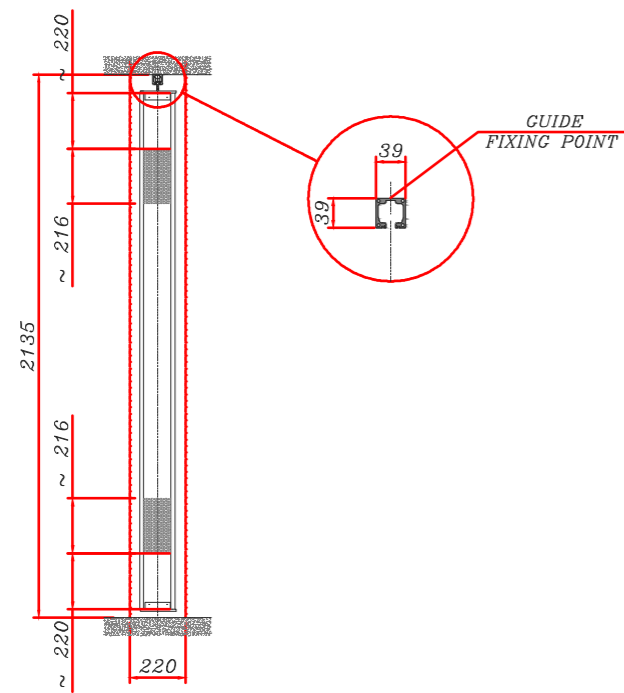
NOTES |

Construction characteristics:

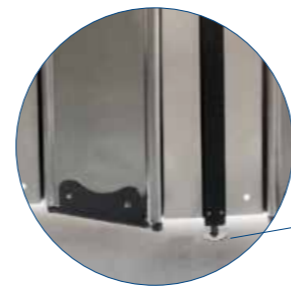
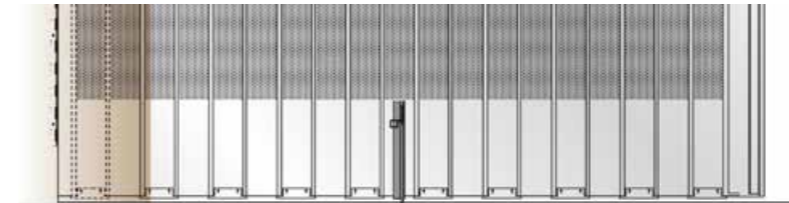
The stainless steel (black painted) modular shutter is easy and fast to install and the system does not require a track on the floor but a simple latch with locking pin, leaving the floor free from any obstruction.

The manual opening is flowing and noiseless, the side-sliding system folds with a simple manual push through wheels and a ball bearings inserted in the top-hung track.

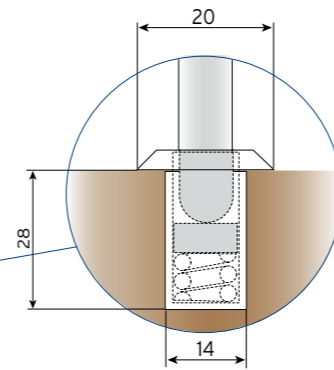
TYPICAL SECTION



Serratura centrale
Central lock



Chiavistello con catenaccio
Latch with locking pin

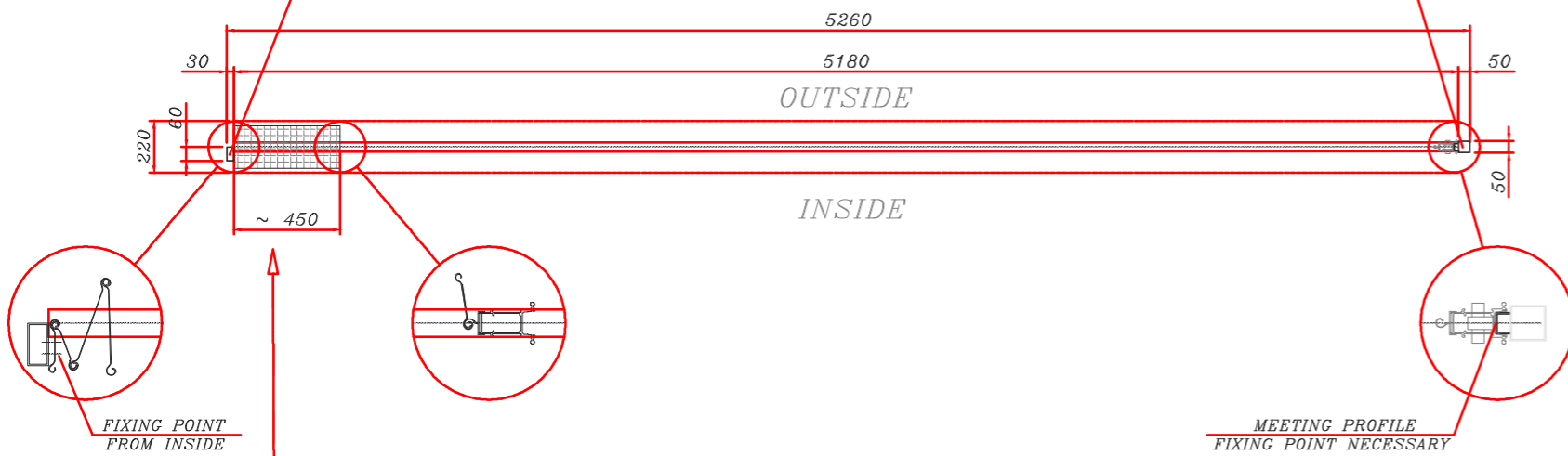


Occhio a pavimento in acciaio inox con protezione a molla antipolvere
Stainless steel floor socket contains a dust cap that protects the spring mechanism underneath

TUBULAR TO FIX FOLDINGPACK, 50x50 FIXED ABOVE AND BELOW

TUBULAR TO FIX FOLDINGPACK, 60x30 FIXED ABOVE AND BELOW

TOP VIEW



WITH CARTER, SIDE ACCESSIBLE FOR ASSEMBLY / MAINTENANCE

