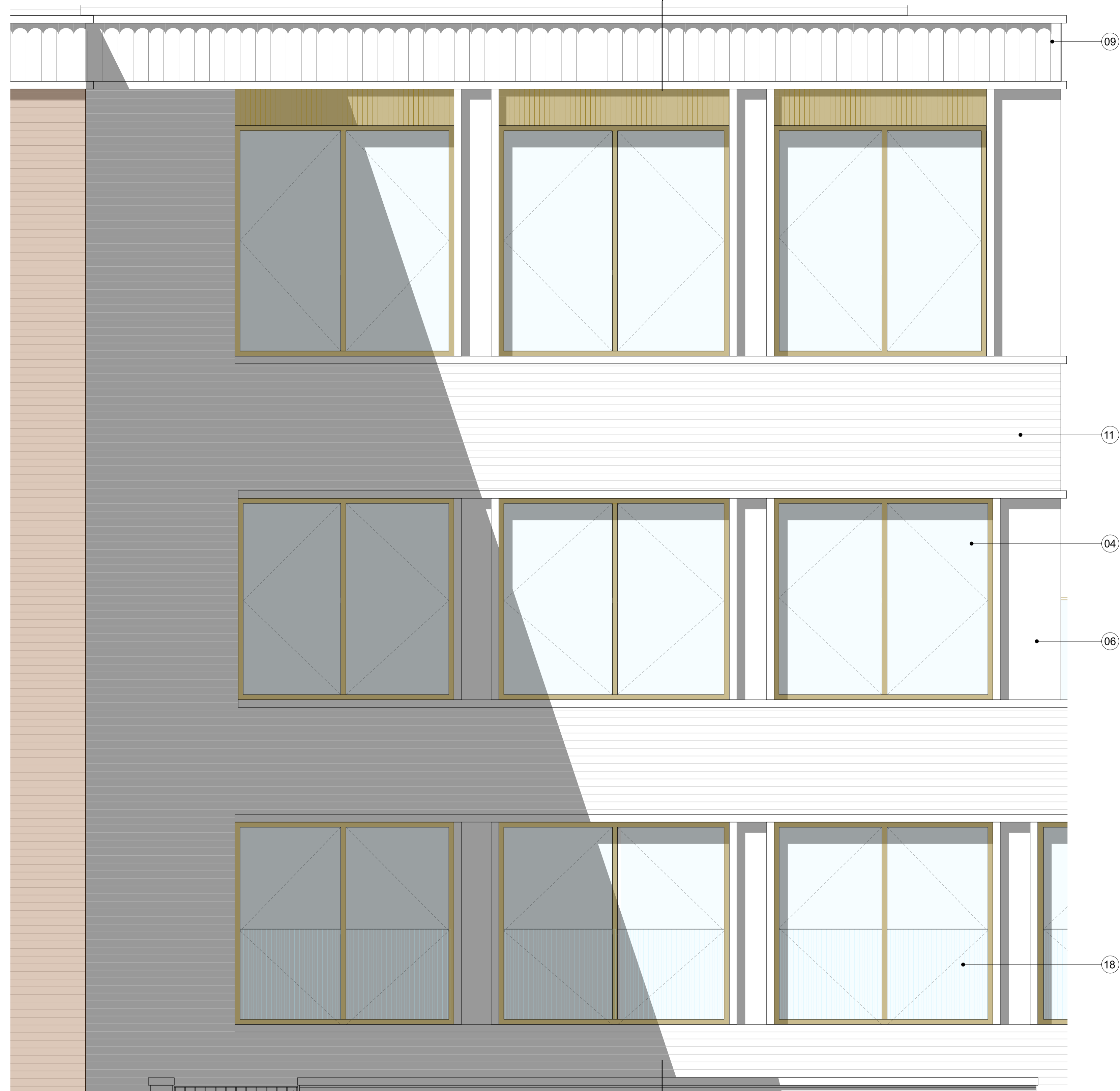
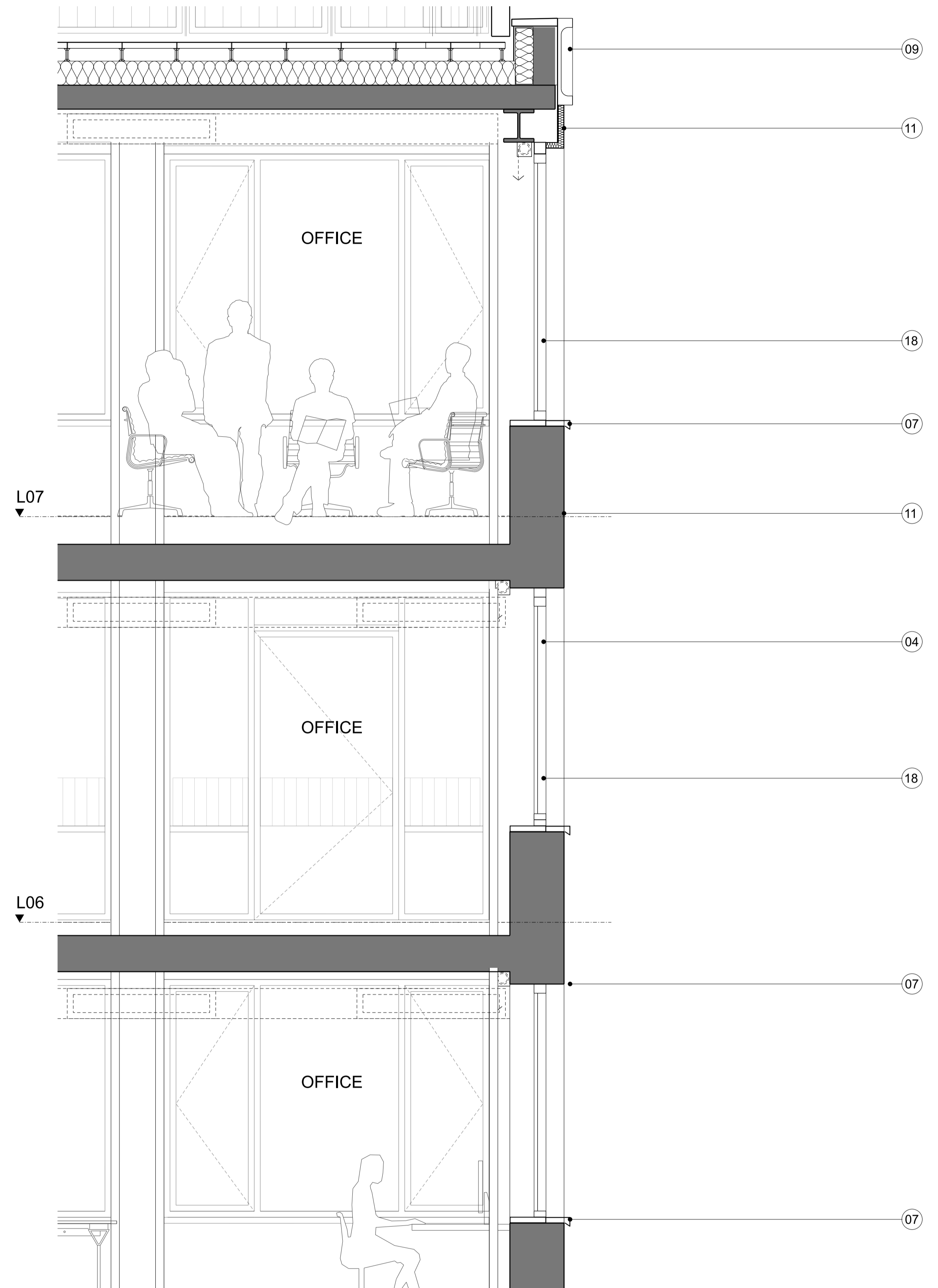


02  
1001  
P225



01 BAY ELEVATION: EAST ELEVATION UPPER



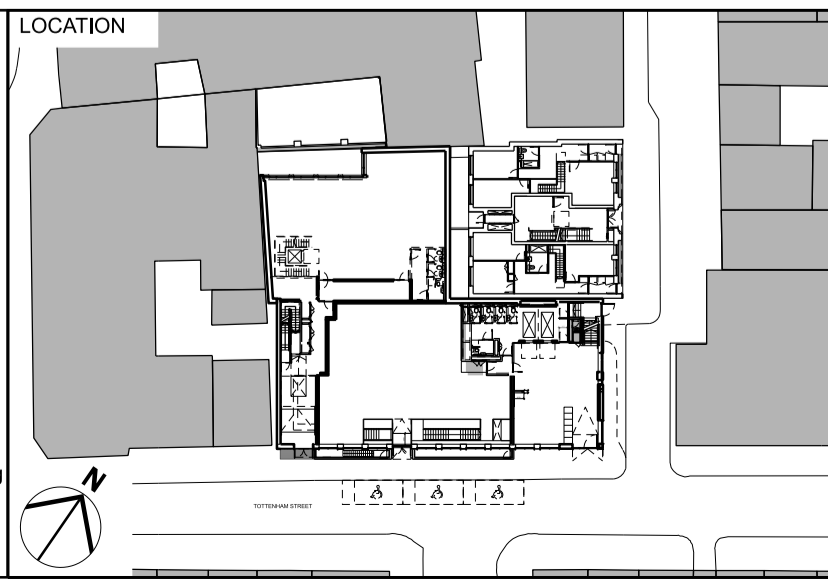
02 PARTIAL SECTION

KEY		
01 Existing brick refurbished	08 Full height glazing with bronze colour metal frame	15 Bifolding doors with metal frame
02 Fluted concrete/ GRC detailing	09 Concrete/ GRC fluted cornice	16 Juliet balcony with painted metal balustrade
03 Ribbed bronze coloured metal header	10 Painted metal balustrade	17 Building signage
04 Window with bronze colour metal frame	11 Pale concrete brick	18 Frosted privacy glass
05 Glazed doors with bronze colour metal frame	12 Louvred metal plant screen	19 Opening vent as part of fire strategy
06 Vertical concrete/ GRC pilaster	13 Expressed metal channel	20 Concrete plinth
07 Concrete/ GRC detailing	14 Hit and miss brick	21 Full height glazing
		22 Metal louvre

REV	DATE	DESCRIPTION
P01	21/07/17	Issue for Planning
P02	30/11/17	Revised Issue for Planning with amendments
P03	02/03/18	Revised Issue for Planning with amendments
P04	25/02/20	Revised Issue for Planning with minor amendments
P05	13/03/20	Revised Issue for Planning with minor amendments

CONSULTANTS	
CLIENT:	WESTBROOK PARTNERS/ 1921 Mortimer Investments Limited
STRUCTURAL ENGINEER:	HEYNE TILLET STEEL
MECHANICAL ENGINEER:	THORNTON REYNOLDS
COST CONSULTANT:	LESLIE CLARK
PROJECT MANAGER:	RADCLIFFES CC
FIRE ENGINEER:	AFFINITY FIRE
APPROVED INSPECTOR:	BRCS
PLANNING CONSULTANT:	DP9
DAY LIGHT/ SUNLIGHT:	POINT 2 SURVEYORS
PARTY WALL CONSULTANT:	POINT 2 SURVEYORS
RESIDENTIAL ARCHITECT	COVE BURGESS

**NOTE**  
 1. Do not scale from this drawing.  
 2. All dimensions to be checked on site by the contractor and such dimensions to be his responsibility.  
 3. Report all drawing errors, omissions and discrepancies to the architect.  
 4. This document may be issued in an uncontrolled CAD format to enable others to use it as background information to make alterations and/or additions. In that instance the file will be accompanied by a PDF version. It is for those making such alterations and additions to ensure that they make use of current background information.  
 AHMM Ltd accepts no liability for any such alterations or additions to the background information or arising out of changes to background information which occur prior to alterations of additions being made.



ALLFORD HALL MONAGHAN MORRIS					
ARCHITECTS Ltd MORELANDS, 5-23 OLD STREET LONDON EC1V 9HL TEL 020 7251 5261 FAX 020 7251 5123 WEB WWW.AHMM.CO.UK					
job title <b>ARTHUR STANLEY HOUSE</b>					
drawing title / location <b>PROPOSED BAY STUDY EAST ELEVATION - COMMERCIAL UPPER</b>					
drawn by LV	checked GH	scale 1:25@A1; 1:50@A3	status PLANNING		
project <b>15068</b>	zone	source	classification	drawing no. <b>(00)_P225</b>	revision <b>P05</b>