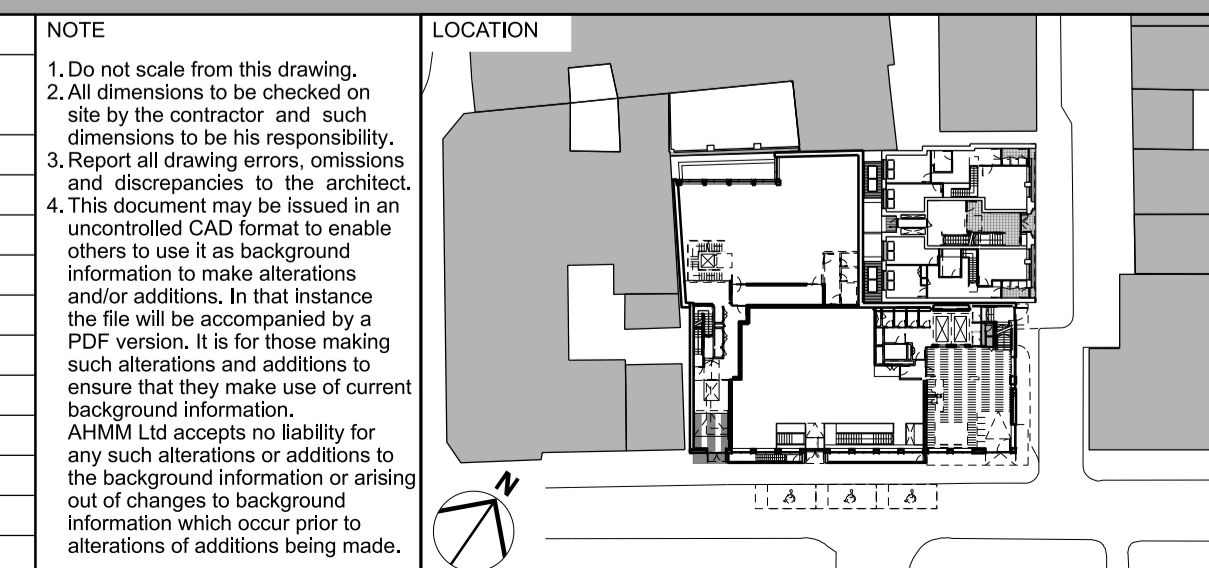


REV	DATE	DESCRIPTION
P01	21/07/17	Issue for Planning
P02	30/11/17	Revised Issue for Planning with amendments
P03	02/03/18	Revised Issue for Planning with amendments
P04	25/02/20	Revised Issue for Planning with minor amendments
P05	13/03/20	Revised Issue for Planning with minor amendments

CONSULTANTS	CLIENT
STRUCTURAL ENGINEER: HEYNE TILLET STEEL	WESTBROOK PARTNERS/ 1921 Mortimer Investments Limited
MECHANICAL ENGINEER: THORNTON REYNOLDS	
COST CONSULTANT: LESLIE CLARK	
PROJECT MANAGER: RADCLIFFES CC	
FIRE ENGINEER: AFFINITY FIRE	
APPROVED INSPECTOR: BRCS	
PLANNING CONSULTANT: DP9	
DAY LIGHT/ SUNLIGHT: POINT 2 SURVEYORS	
PARTY WALL CONSULTANT: POINT 2 SURVEYORS	
RESIDENTIAL ARCHITECT: COVE BURGESS	

NOTE
1. Do not scale from this drawing.
2. All dimensions to be checked on site by the contractor and such dimensions to be his responsibility.
3. Report all drawing errors, omissions and discrepancies to the architect.
4. This document may be issued in an uncontrolled CAD format to enable others to use it as background information to make alterations and/or additions. In that instance the file will be accompanied by a PDF version. It is for those making such alterations and additions to ensure that they make use of current background information.
AHMM Ltd accepts no liability for any such alterations or additions to the background information or arising out of changes to background information which occur prior to alterations of additions being made.



<b>ALLFORD HALL MONAGHAN MORRIS</b>			
ARCHITECTS Ltd MORELANDS, 5-23 OLD STREET LONDON EC1V 9HL TEL 020 7251 5261 FAX 020 7251 5123 WEB WWW.AHMM.CO.UK			
job title <b>ARTHUR STANLEY HOUSE</b>			
drawing title / location <b>BASEMENT B2 FLOOR PLAN PROPOSED PLAN</b>			
drawn by LV	checked GH	scale 1:100@A1; 1:200@A3	status PLANNING
project 15068	zone	source (00)_P098	revision P05