

This drawing is the property of Architon LLP and must not be divulged to anyone, copied or reproduced, or used for marketing, advertising or promotional purposes without the express written permission of Architon LLP.

All dimensions are to be checked on site and not scaled from this drawing. Contractors must verify all dimensions on site before setting out, commencing work or preparing shop drawings. Any discrepancies on this drawing with other contract documentation to be reported immediately for clarification.

ENSURE NO STRIP OUT, DEMOLITION OR BUILDING WORKS ARE UNDERTAKEN WITHOUT THE REQUIRED LISTED BUILDING AND PLANNING CONSENTS FROM THE LOCAL AUTHORITY AND ENGLISH HERITAGE.

DRAWINGS ARE BASED ON INFORMATION PROVIDED BY UCL.

DRAWINGS TO BE READ IN CONJUNCTION WITH:-

- ARCHITECTURAL DRAWINGS, SCHEDULES AND SPECIFICATIONS.
- STRUCTURAL DRAWINGS AND SPECIFICATIONS.
- M&E DRAWINGS AND SPECIFICATIONS.
- ACOUSTIC REPORTS.
- FIRE STRATEGY.

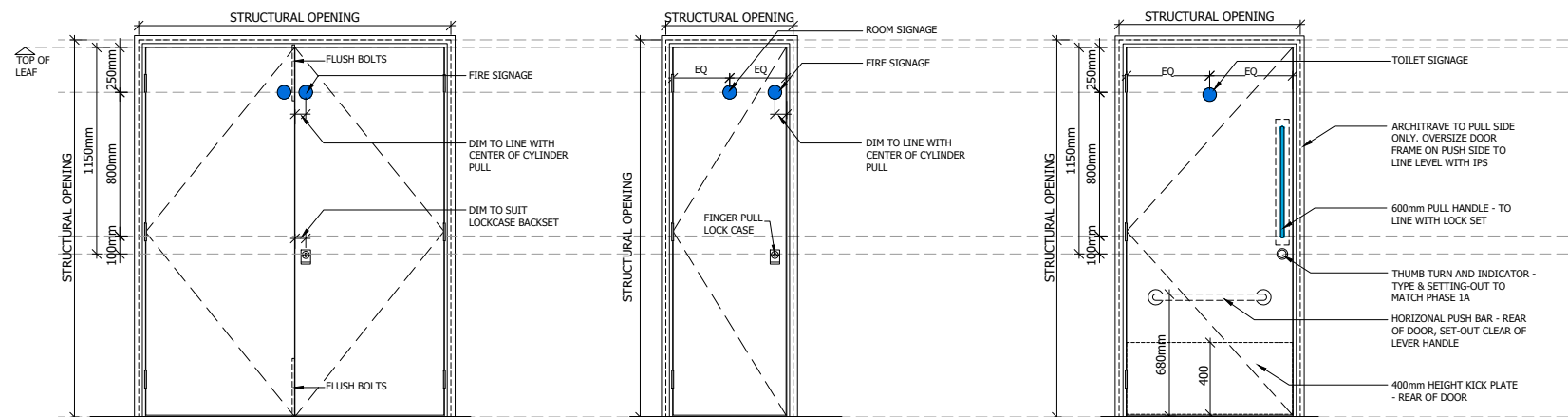
ALL WORKS TO BE FULLY CO-ORDINATED WITH MEP / STRUCTURAL PROPOSALS, AS APPROPRIATE.

ALL SETTING-OUT INFORMATION TO BE CHECKED AGAINST SITE DIMENSIONS

ALL WORKS TO BE IN ACCORDANCE WITH ALL STATUTORY REQUIREMENTS. WHERE AMENDED PROPOSALS DIFFER FROM THOSE APPROVED BY LA, NEW APPROVALS TO BE OBTAINED PRIOR TO COMMENCING WORKS.

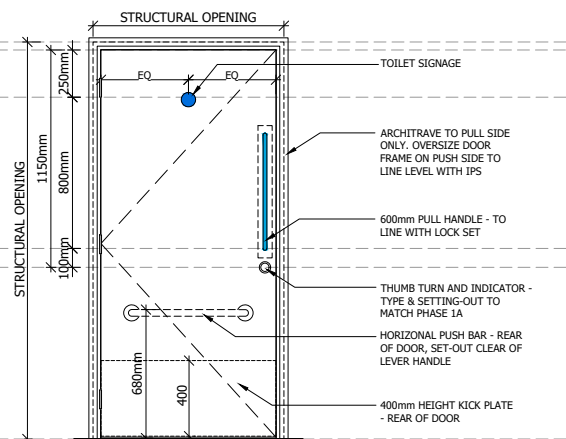
FIRE RATED COMPONENTS TO BE IN ACCORDANCE WITH OVER-ARCHING FIRE STRATEGY FOR THE IOE.

ACOUSTIC RATED COMPONENTS TO BE IN ACCORDANCE WITH ACOUSTIC STRATEGY - PREPARED BY B.H.

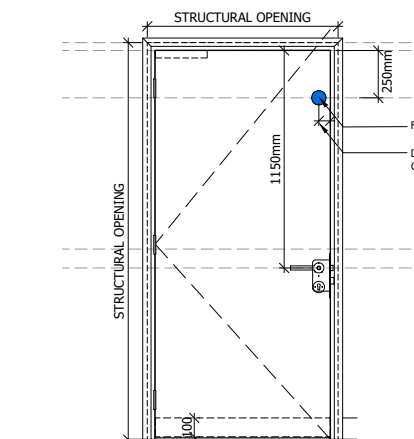


1 TYPICAL DOOR TYPE 1
1:20

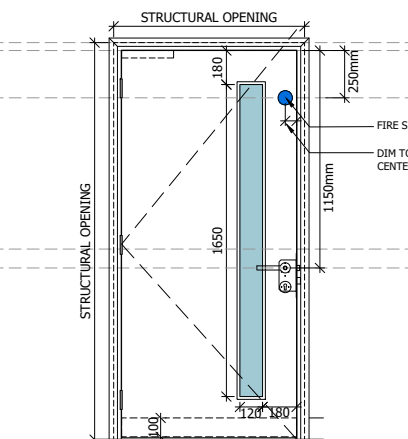
2 TYPICAL DOOR TYPE 2
1:20



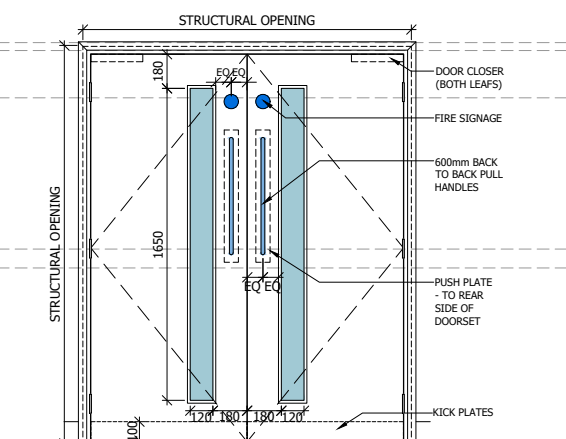
3 TYPICAL DOOR TYPE 3
1:20



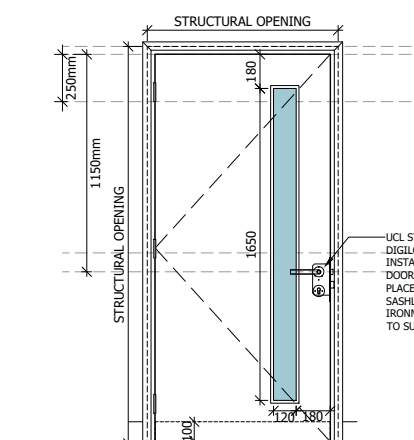
4 TYPICAL DOOR TYPE 4
1:20



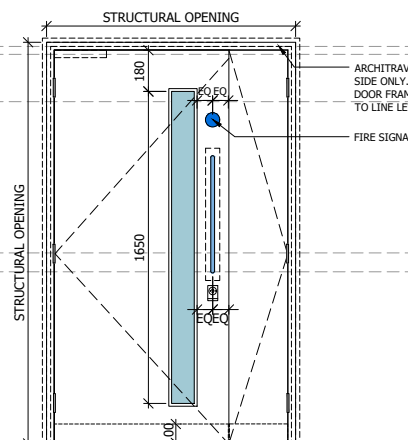
6 TYPICAL DOOR TYPE 6
1:20



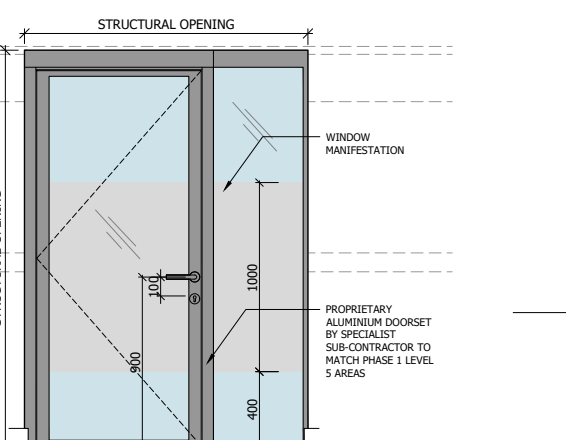
5 TYPICAL DOOR TYPE 5
1:20



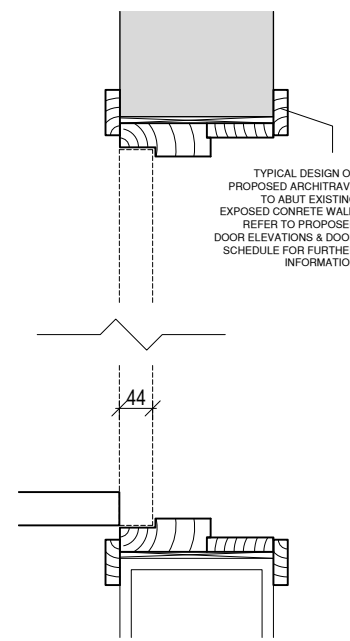
7 TYPICAL DOOR TYPE 7
1:20



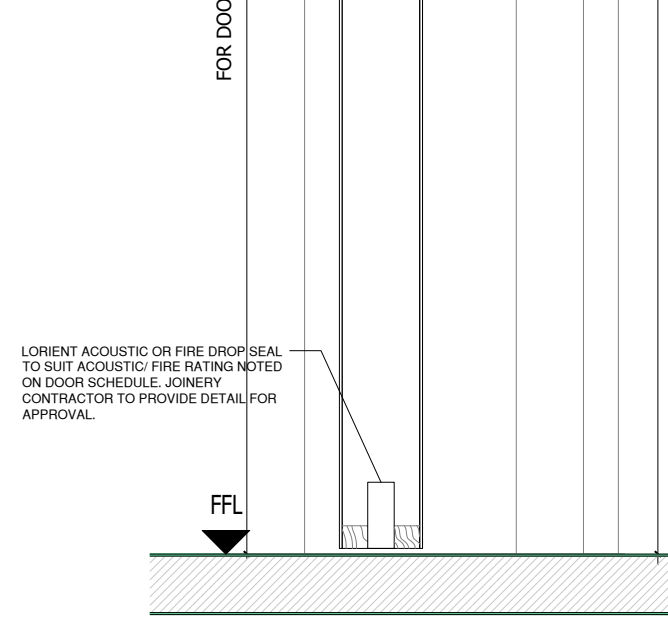
8 TYPICAL DOOR TYPE 8
1:20



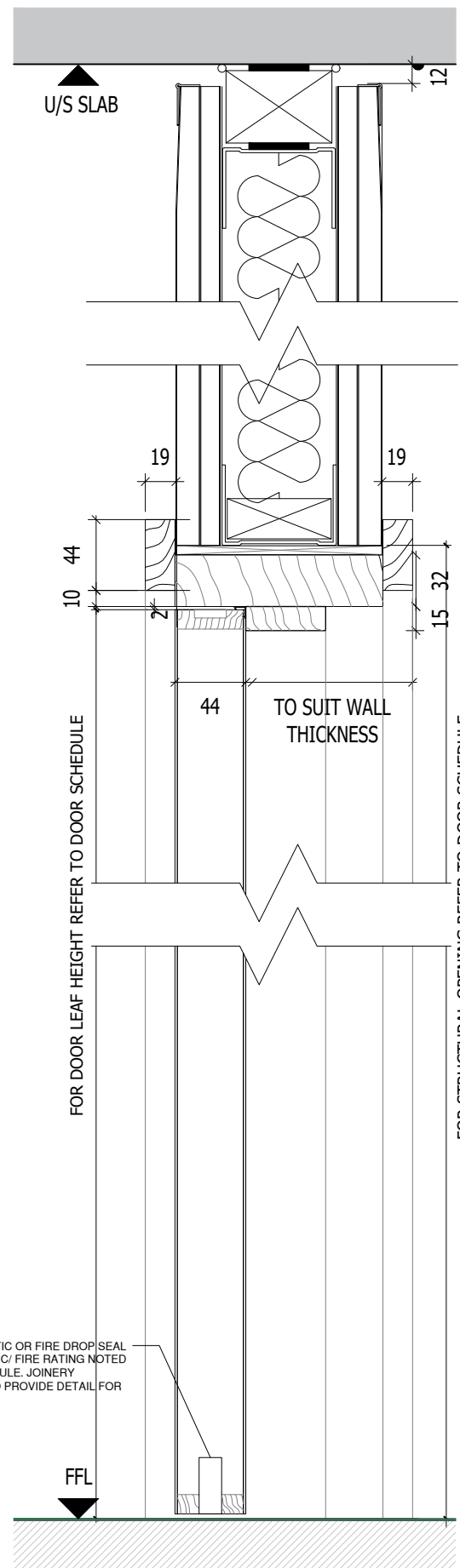
9 TYPICAL DOOR TYPE 9
1:20



10 TYPICAL DOOR DETAIL
1:5



11 TYPICAL DOOR DETAIL
1:2



B	ISSUED FOR PLANNING	20.03.2020
A	PRELIMINARY ISSUE - FOR COMMENT	06.03.2020
Rev	Description	Date

Client
Overbury
Job title
University College London
Institute of Education
Phase 2
20 Bedford Way, WC1H 0AL

Drawing title
Dorset - Typical Elevation
As Proposed
Planning Application 2

Scale	Date	Drawn
1:20/ 1:5/ 1:2 @A1	Mar 20	IL

ARCHITON LLP
CHARTERED ARCHITECTS · DESIGN
PLANNING CONSULTANTS · DEVELOPMENT ·
BUILDING COST MANAGEMENT
REGENCY HOUSE
17 WEST STREET
EPSOM KT18 7RL
TEL: 01372 745600
FAX: 01372 745016
Email: info@architon.com

Drawing No
3147 -P2-2014 B
ARCHITON LLP
certified to:
BS EN ISO 9001
BS EN ISO 14001
IIP Accreditation