

# INITIAL THOUGHTS

## A PLACE FOR GATHERING / SPACES TO FIT THE BRIEF

The London Irish Centre provides a multitude of services which has been outlined in the 3 core focus areas - Care, Culture & Community.

This mix of functions enriches the cultural offering to both Camden & the Irish community, but also requires care and consideration in how the different functions interact within the building.

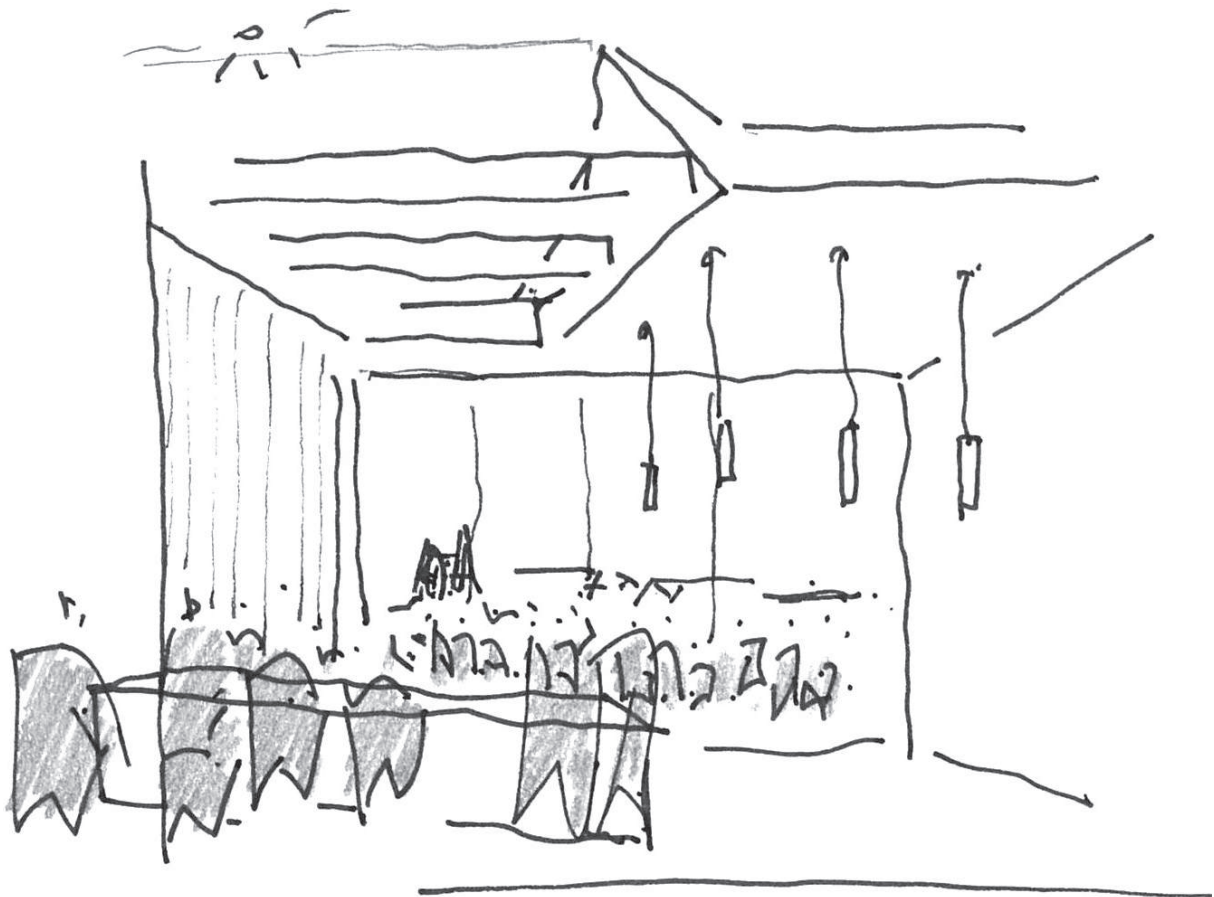
The proposed layouts are being developed to ensure that the public elements of the brief do not interfere with important care services that are provided to vulnerable members of the community.



CARE - Sketch of intimate spaces

### SPACES TO FIT THE BRIEF

The sketches below illustrate how the LIC requires spaces that have a range of scales, and often have opposing requirements. The developing proposals seek to rationalise the building layouts so that those at risk within the community are welcomed to the building equally to those that are there for a cultural event, meeting or workshop.



CULTURE - Sketch of a function space for large cultural events

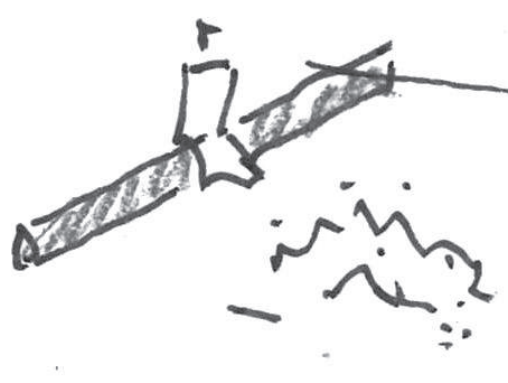


COMMUNITY - Sketch of meeting / group learning spaces

### A PLACE FOR GATHERING

A key principle that underpins the developing building layouts is to create a building with a variety of spaces, to allow the staff and visitors to the London Irish Centre the ability to come together as a full community, as noted in the conceptual sketches below.

Developing the building design through the motif of gathering will provide spaces where the older and younger generations can mix and interact with one another which is currently very difficult due to the multiple entrances and lack of spaces to socialise in. This will help address issues relating to social isolation, exclusion and loneliness which are becoming an increasing issue in the elderly community in Camden and throughout London.



The Individual



The beginning of a community



A gathering

Supported By:



Culture Ireland  
Cultúr Éireann



Government of Ireland  
Emigrant Support Programme  
An Boinn Gnóthaí: Fachtóirí agus Trádáil  
Department of Foreign Affairs and Trade



# PROPOSALS

## THE IRISH HEART OF LONDON



### The LIC building currently faces a number of challenges that can be addressed through our proposed redevelopment:

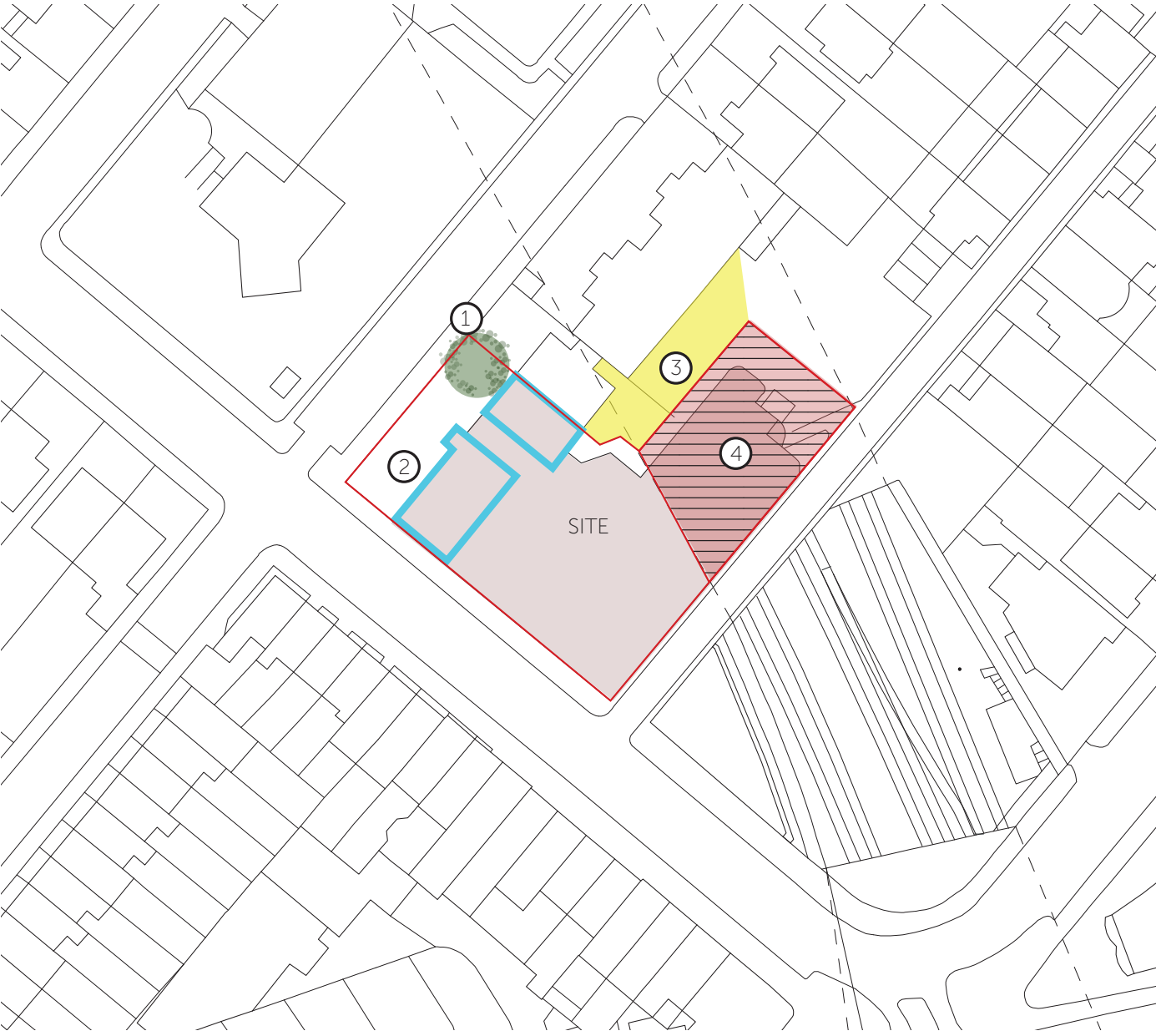
- The building is poorly laid out, the three original homes which form the front of the Centre were constructed in 1860. Further major additions were made as resources and funding permitted however the building was never planned out for future use and consequently a large amount of space is wasted.
- The building now requires serious repair works and many of the facilities need intensive maintenance having come to the end of their useful life.
- With increased pressure on our services the Centre needs to find new ways of supporting our work in the community.
- There is no full disabled access, and while improvements have been made, there is still work that needs to be done to make the building more accessible
- The building is not energy efficient, and without serious improvements will continue to require costly maintenance and be a drain on the environment.
- Multiple entrances and exits have led to increasing security issues.
- In its current form the Centre has poor event infrastructure, with sound and IT equipment in need of considerable improvements.

### OPPORTUNITY FOR CHANGE

Redevelopment of the Centre provides an opportunity for improved and upgraded facilities which will ensure the LIC continues its work supporting the Irish and local communities and beyond. We want to:

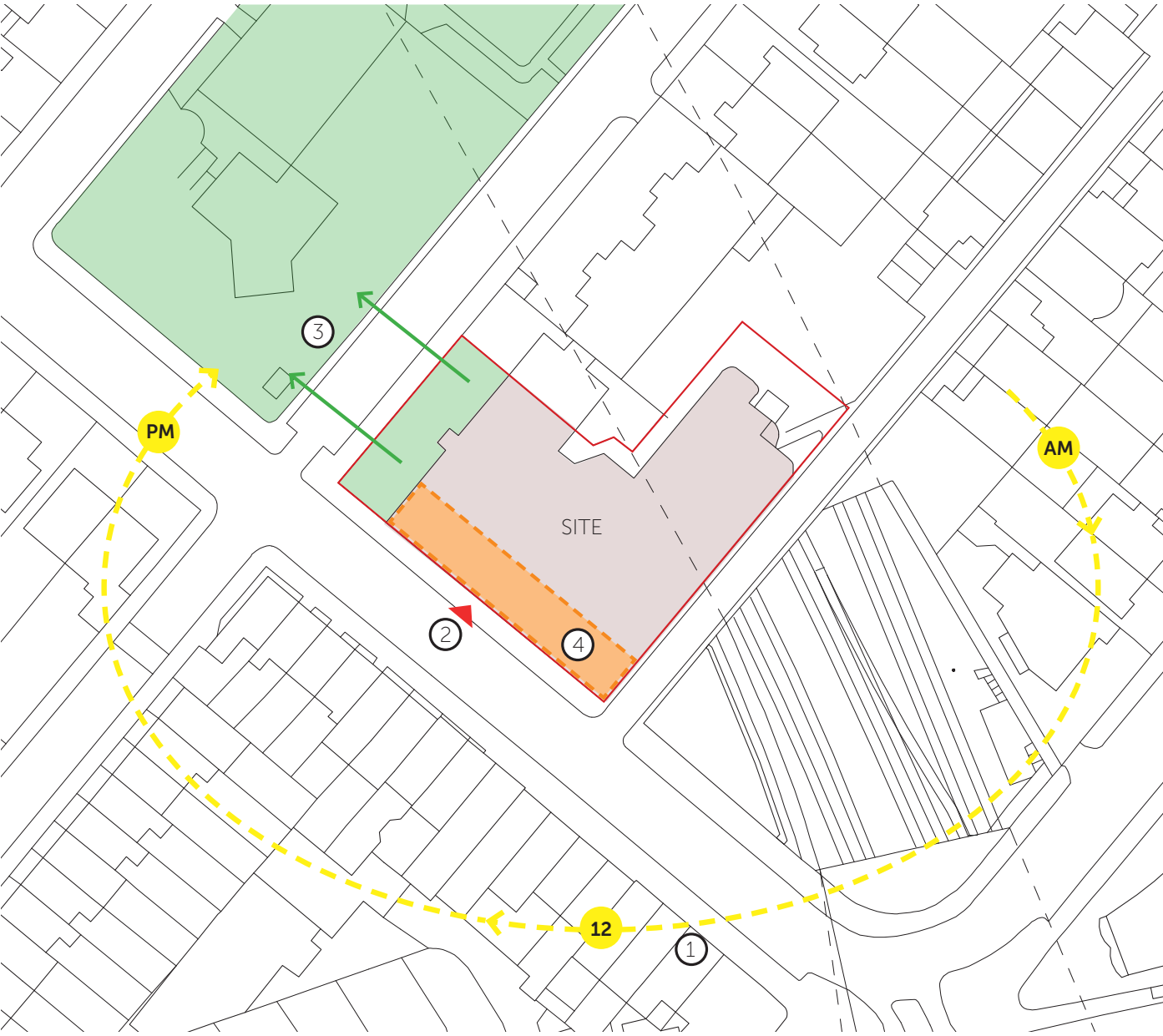
- Design enhanced community facilities to ensure our advice, welfare and day centre offices are situated close to one another.
- Create an enhanced Well-being Centre offering activities, education, social space and lunches.
- Provide a Community Café, bar and meeting space.
- Provide flexible event and office space to support the LIC’s charitable objectives.
- Create an improved destination for the Irish community in London, as well as an important cultural asset for Camden.
- Enhance the Irish identity of the Centre through design and storytelling in its redevelopment.
- Design a sustainable building that reduces the Centre’s impact on the environment

### CONSTRAINTS

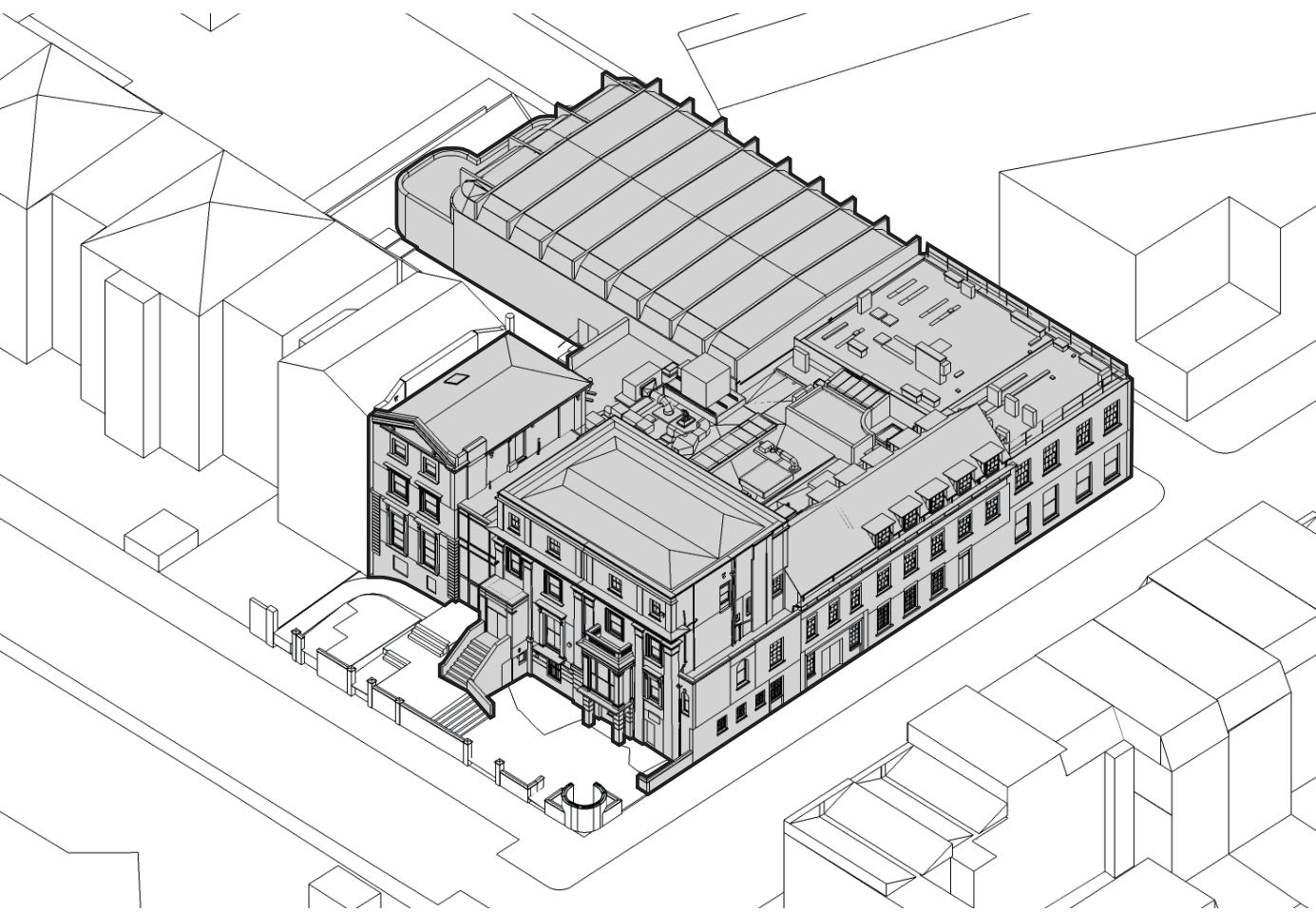


- 01. Tree preservation order (TPO)
- 02. Retained existing Villas
- 03. Neighbours to the north
- 04. Existing railway tunnel beneath site

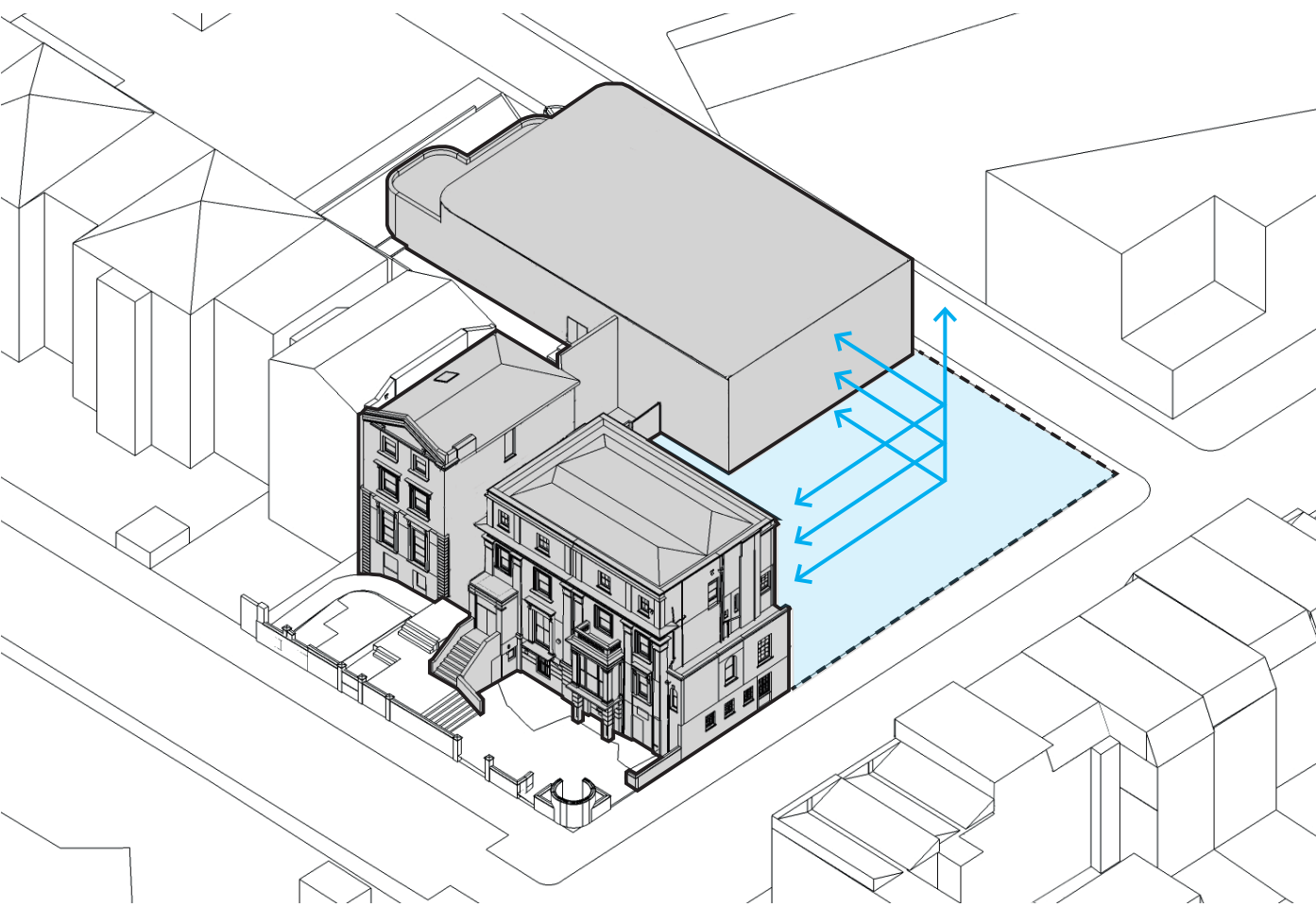
### OPPORTUNITIES



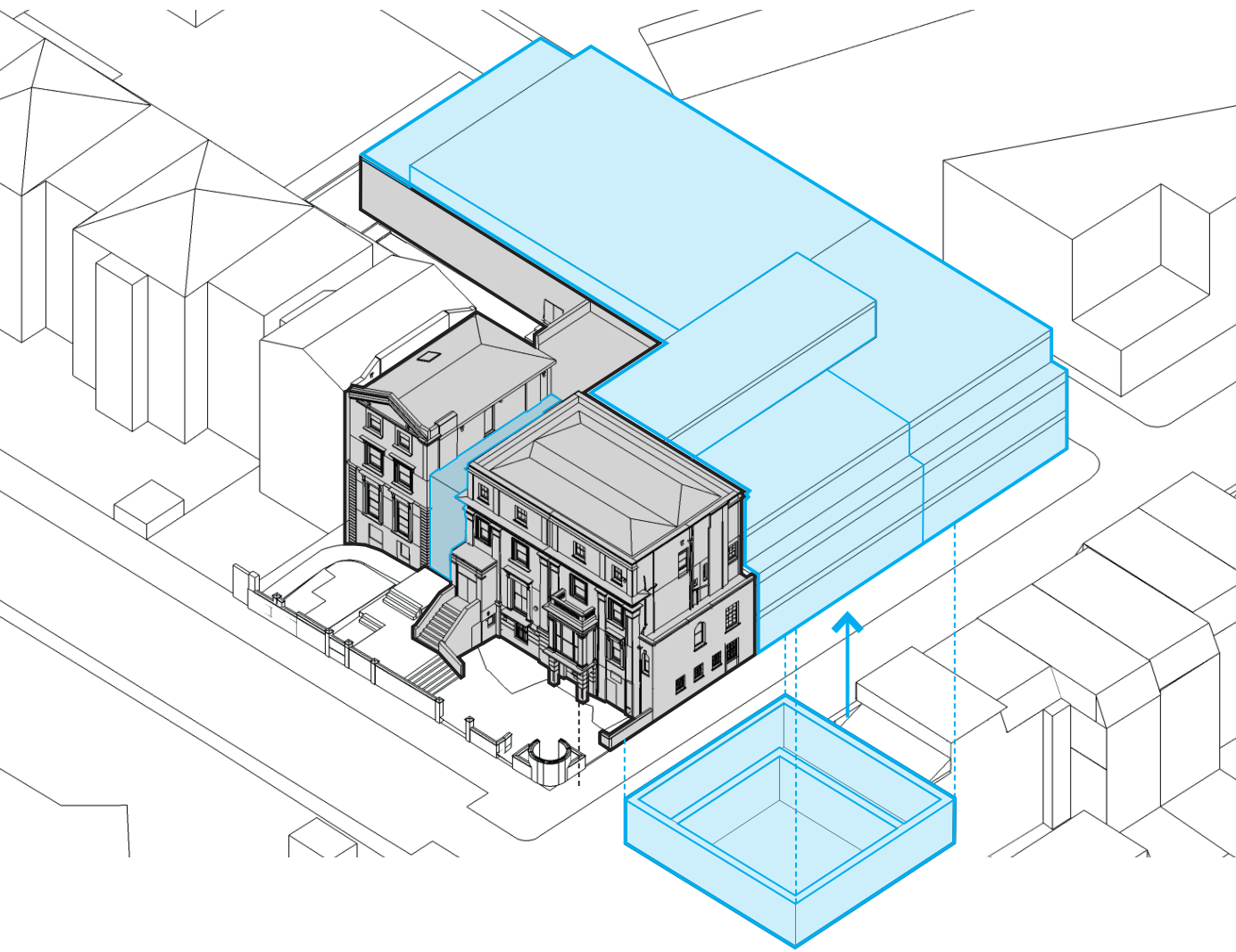
- 01. Southern orientation
- 02. Reinstatement historic entrance on Murray Street
- 03. View towards the greenery of Camden Sq.
- 04. Potential for roof level amenity space



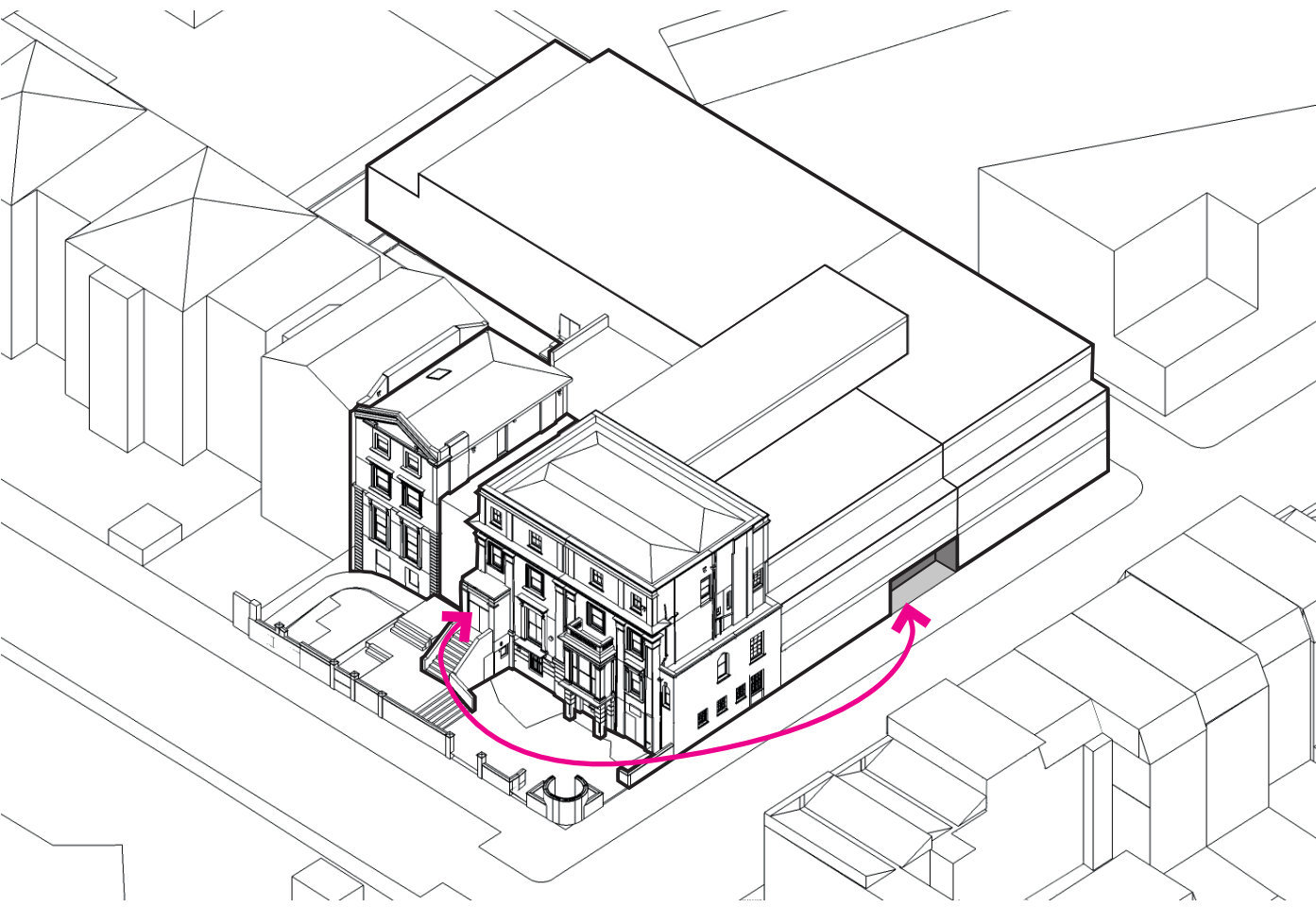
Stage 1 - Identify buildings to keep



Stage 2 - Remove corner buildings



Stage 3- New corner building and basement / Improve roof-scape



Stage 4 - Reinstatement entrance on Murray Street to improve access and circulation

Supported By:



Culture Ireland  
Cultúr Éireann



Government of Ireland  
Emigrant Support Programme  
An tAonán Gnóthaí Fachtaracha agus Trádála  
Department of Foreign Affairs and Trade



# PROPOSALS

## PRELIMINARY LAYOUTS

The new main entrance is shown on the ground floor plan on Murray Street which leads to a new centralised reception / public cafe space with access to the new basement function space.

A new centrally positioned staircase and lift will provide access to every floor of the building making it fully accessible to wheelchair users.

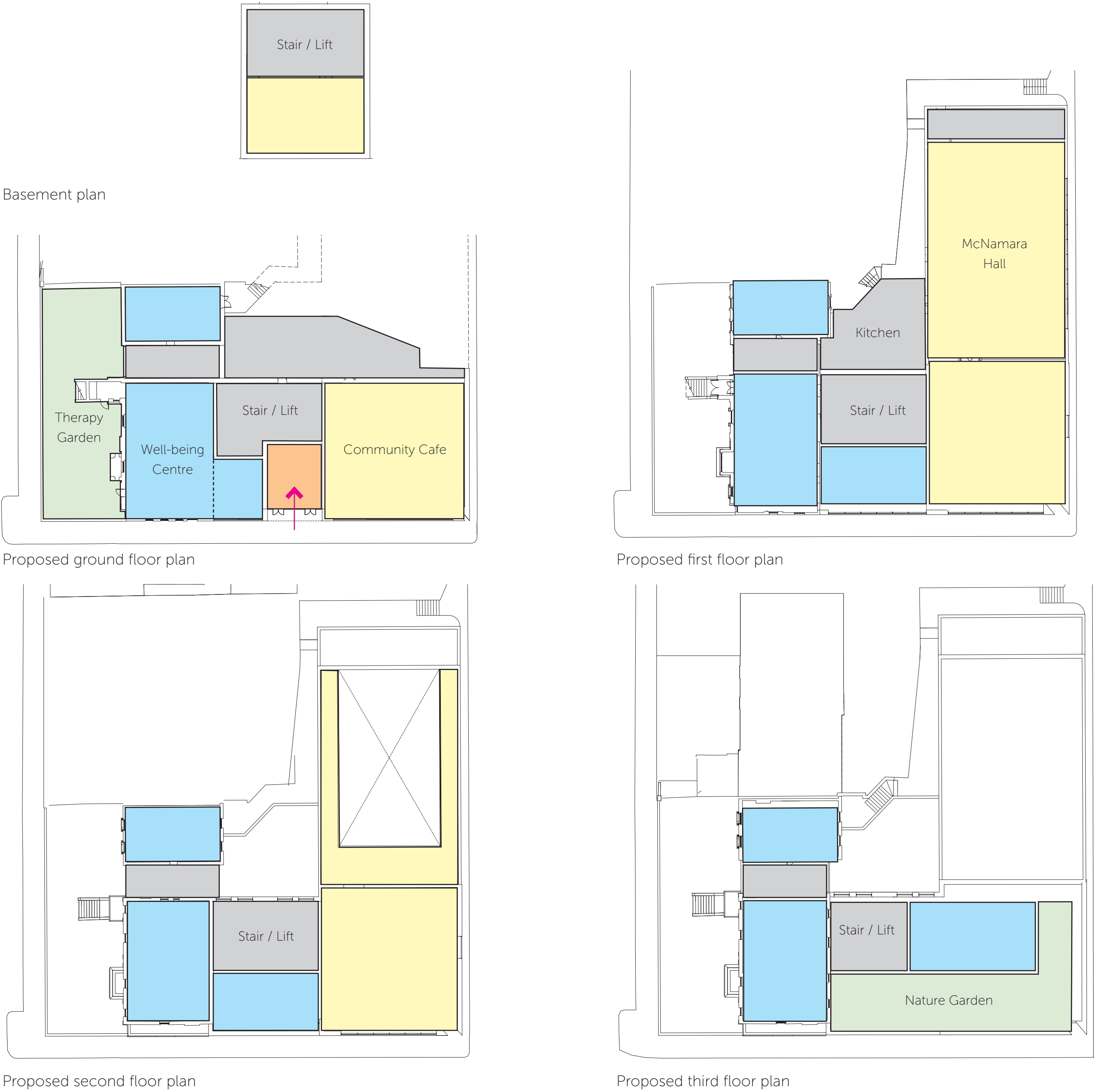
The LIC community and office space is proposed on the 1st floor along with the entrance to the McNamara Hall.

On the 2nd floor more community and office space is proposed to allow the Centre to better provide their care and outreach programmes.

The 3rd floor leads to a new terraced area, which could house a new library/archive/community events space as well as LIC administrative offices.

We are at an early stage in the design process and plans will continue to evolve following conversations with staff and users of the Centre, Camden Council and those attending today’s Community Conversation event.

- Reception/cafe/casual meeting
- LIC community & care / office spaces
- Function & events spaces
- Circulation/stairs/WC/storage
- Landscaping



Our current proposals include careful removal of some of the existing buildings. This will enable us to provide better quality spaces and a fully accessible community centre.

To be removed



Existing Murray Street composition



Existing Camden Square composition



Existing Murray Mews composition

Supported By:



# SKETCH VIEWS

## LOOKING ALONG MURRAY STREET

We are at an early stage in the design process and the images shown will continue to evolve following conversations with staff and users of the Centre, Camden Council and those attending today's Community Conversation event.

### VIEW - ALONG MURRAY STREET FROM CAMDEN ROAD



Existing view along Murray Street



Indicative massing view along Murray Street

### VIEW - ALONG MURRAY STREET FROM AGAR GROVE



Existing view along Murray Street



Indicative massing view along Murray Street

Supported By:



Culture Ireland  
Cultúr Éireann



Government of Ireland  
Emigrant Support Programme  
An tAonán Gníomhaíochtaí Fachtaracha agus Trádála  
Department of Foreign Affairs and Trade



# WE WOULD LIKE YOUR FEEDBACK

## WHAT HAPPENS NEXT?

**Thank you for attending our Community Conversation event. We hope you found it useful and informative.**

### NEXT STEPS

The views of those who attended today’s consultation event, along with staff and users of the Centre and Camden Council will taken into consideration as we progress the design.

We are planning to hold another public consultation event in December 2019 to present our updated redevelopment proposals.

We will be writing to our neighbours and emailing users of the Centre in due course to let them know when this event will take place. We will also be advertising the event on signs within the Centre and on our Noticeboard on Camden Square.

### FEEDBACK

We would be grateful if you could please fill in a feedback form provided. This can be either left in the feedback box or posted to the Centre at:

London Irish Centre  
50-52 Camden Square  
London  
NW1 9XB

Or email:

[consultation@londonirishcentre.org](mailto:consultation@londonirishcentre.org)

Go raith mile maith agat  
Thank you

### FREQUENTLY ASKED QUESTIONS

- When will the works commence?*  
The earliest start date is November 2021, however this is dependent on funding and other associated issues.
- How long will they take?*  
Currently we estimate around 16 months but is dependent on the final design and approvals
- Will services continue?*  
Yes they will, we are funded to run service activities and programmes around advice/outreach/well-being/culture. Once the overall scheme is agreed we will consider the phasing for the construction works and look at alternative accommodation for services if that is required.
- Will there be another consultation?*  
Yes we will be planning a second public consultation in December. It will be set over two days.
- How much will the works cost?*  
We are looking at a construction budget in the region of £15m however it is still very early stages and is dependent on final design and approvals.
- How can I keep up to date with the project?*  
Through our newsletter which you can sign up to online as well as through the project website:  
**[www.licfuture.org](http://www.licfuture.org)**



Views of the London Irish Centre buildings:  
Original Villas and McNamara Hall on Murray Mews

Supported By:



**Culture Ireland**  
Cultúr Éireann



**Government of Ireland**  
Emigrant Support Programme  
An Boinn Gnóthaí: Fachtóirí agus Trádáil  
Department of Foreign Affairs and Trade