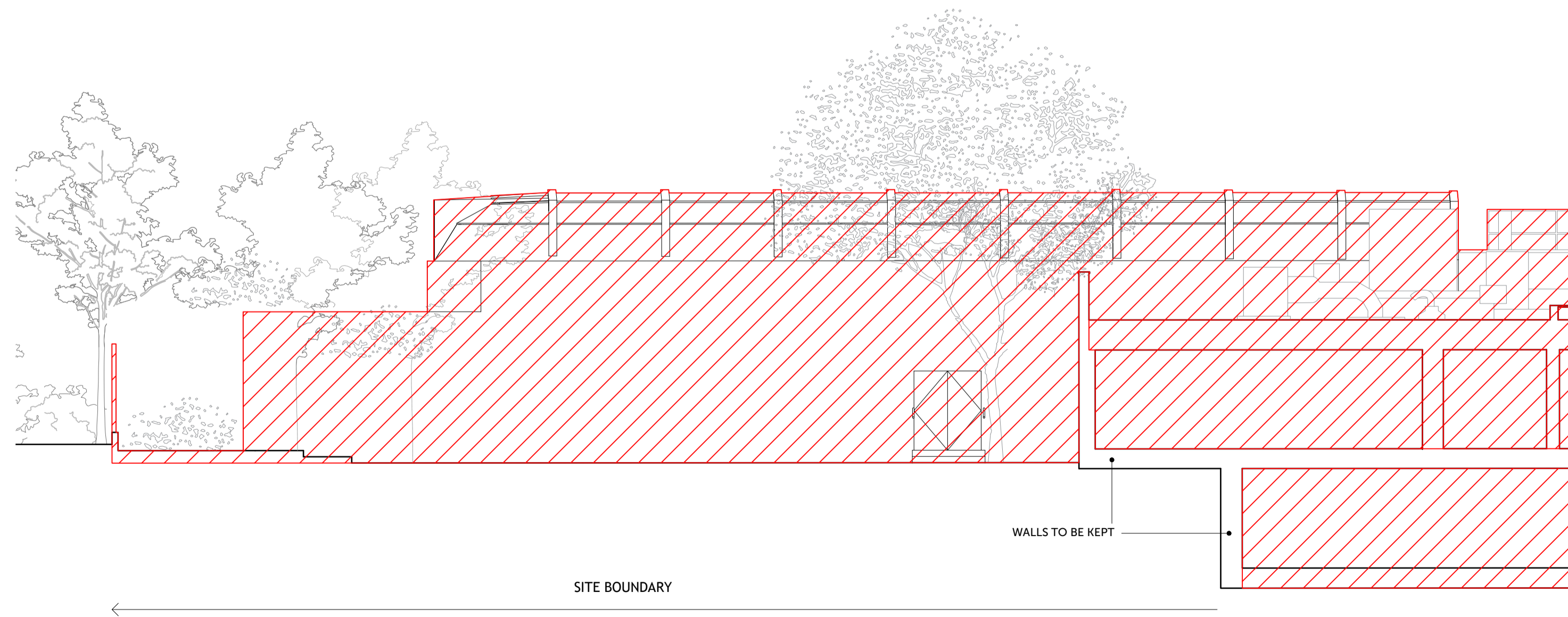
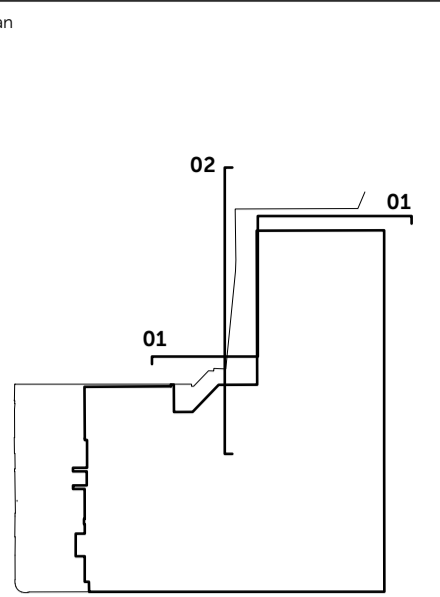


01 NORTH DEMOLITION ELEVATION
MCNAMARA HALL AND BACK OF EXISTING VILLA



02 WEST DEMOLITION ELEVATION
MCNAMARA HALL



Disclaimer

1. Do not scale. Use figured dimensions only. When a scale bar is provided it is for use by the local planning authority solely for the purposes of the planning application to which it relates.
2. Report all drawing errors, omissions and discrepancies to the Architect.
3. All dimensions are to be checked on site by the contractor and such dimensions shall be the contractor's responsibility.
4. This drawing must only be used for the purpose for which it is supplied and its contents must not be reproduced for any purpose without written permission.
5. No areas indicated, or areas calculated from this drawing should be used for valuation purposes or as the basis for development contracts.

© All copyrights Coffey Architects.

Revision	REV	DATE	DESCRIPTION
P1	19.05.20	PLANNING SUBMISSION	

3rd FLOOR FFL
+43.510 m

2nd FLOOR FFL
+40.380 m

1st FLOOR FFL
+36.800 m

GROUND FLOOR FFL
+33.980 m

LEGEND

- FULL DEMOLITION
- PARTIAL DEMOLITION - INCLUDING PARTITIONS, FLOORS, CEILING, DOORS
- WINDOW DEMOLITION

3rd FLOOR FFL
+43.510 m

2nd FLOOR FFL
+40.380 m

1st FLOOR FFL
+36.800 m

GROUND FLOOR FFL
+33.980 m

COFFEY / ARCHITECTS
11-12 Great Sutton Street, London, E14V 0BX / +44 (0)20 7549 2141
www.coffeyarchitects.com

Project Name: LONDON IRISH CENTRE | Project No: 1120

Drawing Name: WEST & NORTH DEMOLITION ELEVATIONS

Status: PLANNING

Drawn: JW	Checked: LM	Scale: 1:150 / 1:200	Sheet: A1 / A3
-----------	-------------	----------------------	----------------

Drawing No: 1120_D202 | Revision No: P1

