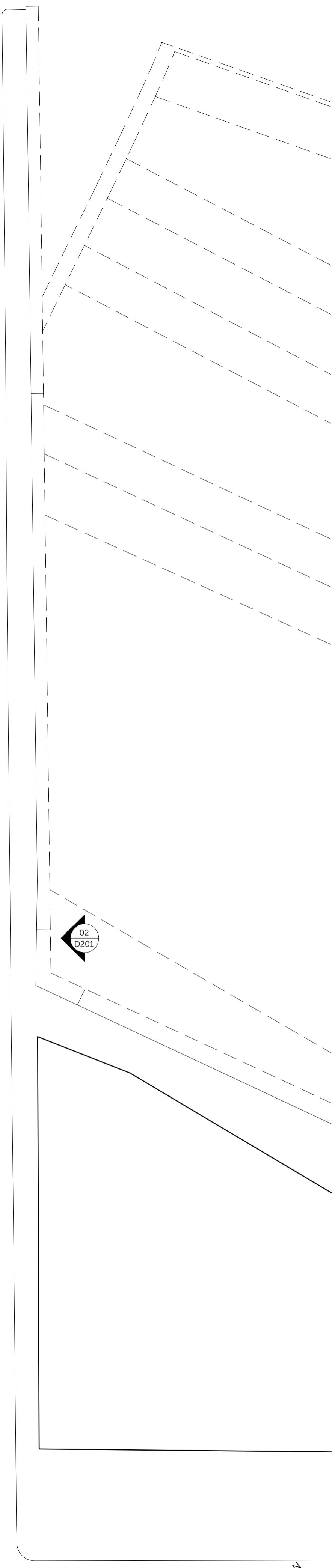


Location Plan



Disclaimer
1. Do not scale. Use figured dimensions only. When a scale bar is provided it is for use by the local planning authority solely for the purposes of the planning application to which it relates.
2. Report all drawing errors, omissions and discrepancies to the Architect.
3. All dimensions are to be checked on site by the contractor and such dimensions shall be the contractor's responsibility.
4. This drawing must only be reproduced for the purpose for which it is supplied and its contents must not be reproduced for any purpose without written permission.
5. No areas indicated, or areas calculated from this drawing should be used for valuation purposes or as the basis for development contracts.
© All copyrights Coffey Architects.

Revision

REV	DATE	DESCRIPTION
P1	19.05.20	PLANNING SUBMISSION

Notes

LEGEND

	FULL DEMOLITION
	PARTIAL DEMOLITION - INCLUDING PARTITIONS, FLOORS, CEILING, DOORS

COFFEY / ARCHITECTS

11-12 Great Sutton Street, London, EC1V 0BX / +44 (0)20 7549 2141
www.coffeyarchitects.com

Project Name: LONDON IRISH CENTRE Project No: 1120

Drawing Name: PROPOSED SECOND FLOOR DEMOLITION

Status: PLANNING

Drawn: JW Checked: LM Scale: 1:150 (A1) / 1:200 (A3)

Drawing No: 1120_D103 Revision No: P1