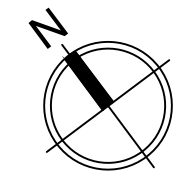
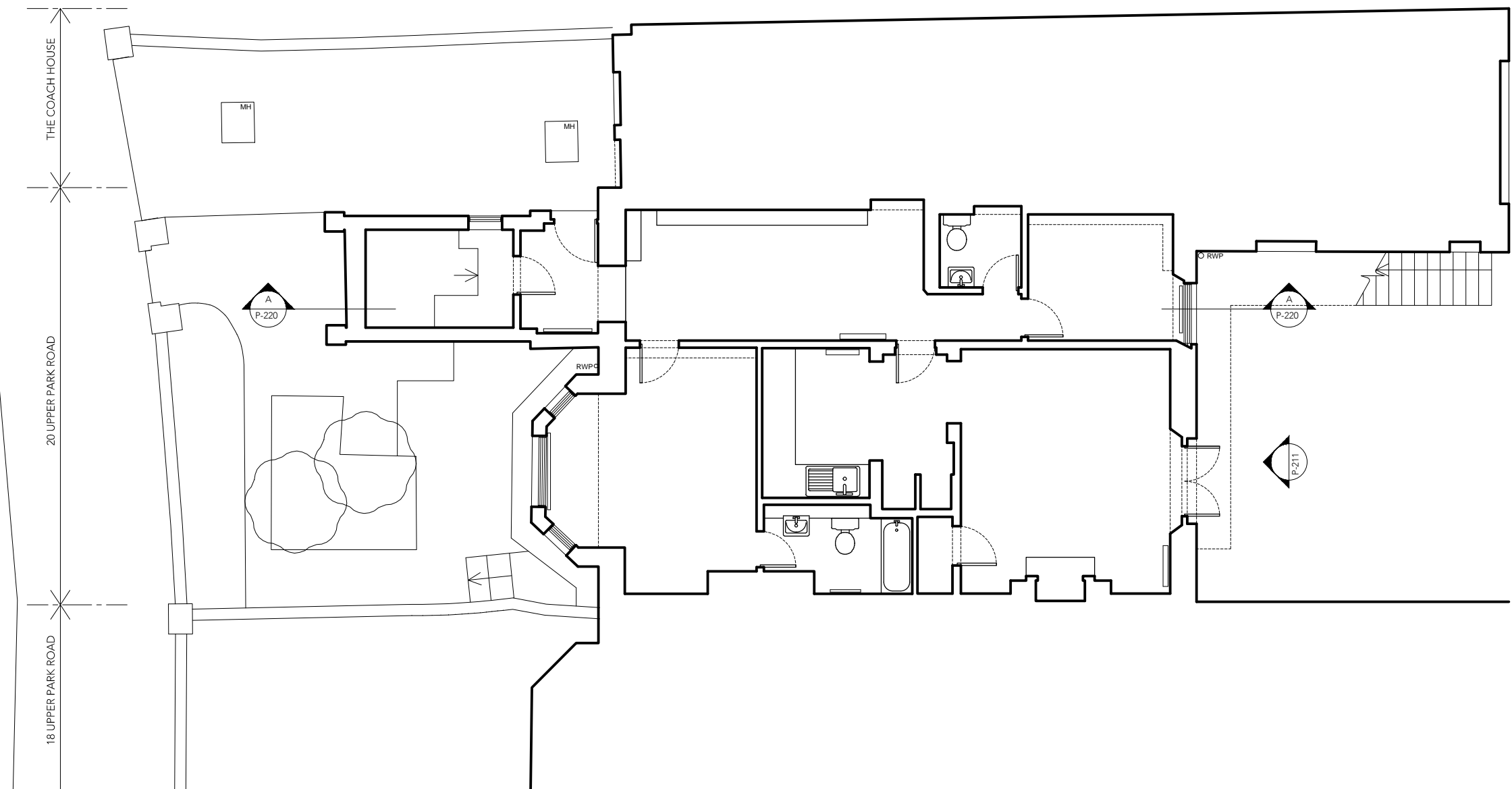


NOTE
 DO NOT SCALE FROM THIS DRAWING, EXCEPT FOR TOWN PLANNING PURPOSES.
 THIS DRAWING IS THE PROPERTY OF TG STUDIO AND COPYRIGHT IS RESERVED BY THEM.
 THIS DRAWING IS ISSUED ON CONDITION THAT IT IS NOT REPRODUCED USED OR DISCLOSED BY
 OR TO ANY UNAUTHORIZED PERSON WITHOUT THE PRIOR CONSENT OF TG STUDIO.
 THE AREAS ON THIS DRAWING HAVE BEEN CALCULATED FROM A CAD DRAWING AND HAVE NO
 TOLERANCES ADDED OR SUBTRACTED.

REVISIONS - PLANNING

DATE 23.03.2020



1 EXISTING LOWER GROUND FLOOR PLAN
 scale 1:100



STUDIO
 Architecture & Interior Design

10 RATHBONE PLACE LONDON W1T 1HP T 020 7636 3838 F 020 7636 5659 WWW.TG-STUDIO.CO.UK

PROJECT 20 UPPER PARK ROAD
 NW3 2UP

DRAWING EXISTING LOWER GROUND PLAN

DATE 23.03.2020 DRAWN BY VCC CHECKED BY TG

STATUS PLANNING SCALE @ A3 1:100

JOB NO. 229 DWG NO. P-200 REV -