

# **Trevor Heaps**

## **Arboricultural Consultancy Ltd.**

12 Plover Drive, Milford-on-Sea, Hampshire, SO41 0XF - Tel: 07957 763 533

Email: [trevor@trevorheaps.co.uk](mailto:trevor@trevorheaps.co.uk) • [www.trevorheaps.co.uk](http://www.trevorheaps.co.uk)



### **Arboricultural Impact Assessment Method Statement & Tree Protection Plan (to BS:5837 2012)**

**For**

**14 Prince Arthur Road, Hampstead  
NW3 6AU**

Prepared for Mr and Mrs Holskjaer

Prepared by Trevor Heaps BSc, MICFor, M. Arbor.A.

Date: 25<sup>th</sup> March 2020

Ref: TH 2171 C

## Summary

It is proposed to make alterations to the front garden of 14 Prince Arthur Road.

The proposals will require the removal of a group of four Himalayan Birches. To mitigate, a new Malus 'Evereste' tree will be planted in the front garden.

Some basic tree protection measures and working methodology (in accordance with BS 5837:2012) will ensure the retained trees are not detrimentally affected during construction.

The relationship between the proposal and retained / third-party trees is sustainable and will not result in any unreasonable pressure to carry out inappropriate tree works.

If the proposal is implemented in accordance with the recommendations laid out in this report, neither the trees or wider landscape will be adversely affected.

This is an arboriculturally defensible scheme and there are no (arboricultural) reasons why planning consent should not be granted.

## Contents

1.0	Introduction.....	1
2.0	Instruction.....	1
3.0	Drawings provided .....	1
4.0	Report context .....	1
5.0	Statutory tree protection .....	2
6.0	Ecological constraints .....	2
7.0	The site .....	2
8.0	The soil and topography .....	3
9.0	Arboricultural Impact Assessment (AIA) and Tree Protection Methods .....	3
10.0	Conclusions.....	5
11.0	The Arboricultural Method Statement (AMS) .....	5
12.0	Arboricultural supervision.....	7
13.0	Signature .....	8
	Appendix 1 - Professional résumé.....	9
	Appendix 2 - Tree data schedule .....	10
	Appendix 3 - Tree data schedule explanatory notes.....	11
	Appendix 4 – Specifications for tree protective measures .....	13
	Appendix 5 – General precautions and further information .....	20
	Appendix 6 - Procedure to follow in case of damage to retained trees .....	22
	Appendix 7 - Induction form for all site personnel .....	23
	Appendix 8 - Site inspection record.....	24
	Appendix 9 - Tree Protection Plan.....	End of Report

## 1.0 Introduction

1.1 I am Trevor Heaps, Director of Trevor Heaps Arboricultural Consultancy Ltd. I have experience and qualifications in the field of Arboriculture. Further information is provided in Appendix 1.

1.2 Contact details:

Who	Name	Organisation	Details
Arboricultural consultant	Trevor Heaps	THAC Ltd. 12 Plover Drive, Milford-on-Sea, Hampshire, SO41 0XF	Tel: 07957 763 533 E-mail: <a href="mailto:trevor@trevorheaps.co.uk">trevor@trevorheaps.co.uk</a>
Client	Mr and Mrs Holskjaer		
London Borough of Camden - LPA	Tree Officer	London Borough of Camden 5 Pancras Square c/o Town Hall, Judd Street London WC1H 9JE	Tel: 020 7974 4444 E-mail: <a href="#">Send an enquiry</a> Website: <a href="http://www.camden.gov.uk/planning">www.camden.gov.uk/planning</a>

## 2.0 Instruction

2.1 We are to survey all significant trees that could be affected by the proposed construction works.

2.2 We are then to prepare a report to appraise the effect these works will have on any nearby trees and the surrounding landscape.

2.3 We are then to set out recommendations for the protection of the trees during development - in accordance with British Standard 5837:2012 'Trees in relation to design, demolition and construction - Recommendations' (BS5837).

## 3.0 Drawings provided

3.1 Proposed Site Plan – Ref 1807/Po.02 – Dated 25/11/2019 – Drawn by MWArchitects

## 4.0 Report context

4.1 The site was surveyed by Trevor Heaps on the 17<sup>th</sup> October 2019.

4.2 The trees were surveyed from within the site at ground level. No climbed inspections were carried out and no root/soil samples were taken for analysis.

4.3 The trees were inspected based on the Visual Tree Assessment (VTA) developed by Mattheck & Breloer (The Body Language of Trees, 1994).

4.4 Tree heights, crown spreads and stem diameters were measured with a clinometer, a Disto laser measure and a diameter measuring tape respectively.

4.5 Small trees and shrubs (with stem diameters less than 75mm) were not surveyed.

4.6 This report is based on the information provided (i.e. site plans, proposed drawings, scales, measurements etc.) and observations during the site visit.

4.7 This report will support a planning application or an application to discharge a tree-related condition and its purpose is to assist and inform the planning process.

4.8 This report does not set out the detailed, working specifications of tree protection measures and engineering / design features, but provides enough detail to demonstrate the feasibility of the scheme in principle.

4.9 We were not instructed to investigate the statutory protection status of trees on or adjacent to the site (but have checked the LPAs website for any relevant information).

4.10 The report does not assess the potential influence of trees upon load-bearing soils beneath existing and proposed structures (resulting from water abstraction by trees on shrinkable soils).

## **5.0 Statutory tree protection**

5.1 It is not clear from the Council's website whether the trees on and adjacent to this site are protected by a Tree Preservation Order or growing within a Conservation Area, and so it is advisable to make further inquiries before carrying out any tree works (not approved by way of this report).

## **6.0 Ecological constraints**

6.1 The Wildlife and Countryside Act 1981 (as amended by the Countryside and Rights of Way Act 2000) provides statutory protection to birds, bats and other species that inhabit trees.

6.2 In addition to any tree matters considered in this report, these protected animals could impose significant constraints on the use and timing of access to the site.

## **7.0 The site**

7.1 This property is situated within a leafy, residential part of Hampstead.

## 8.0 The soil and topography

8.1 The soils at this site were determined using information provided by the British Geological Survey and observations during the site visit.

8.2 The site is level with no adverse features, and the soil texture is clayey loam to silty loam. The soil parent material is prequaternary marine / estuarine sand and silt.

8.3 The soil is deep, and so a thick soil profile is likely. Soil (and any underlying parent Material) should be easily dug to a depth of more than one metre.

8.4 Given the information above, the soil has the potential of becoming compacted (which is harmful to tree roots).

## 9.0 Arboricultural Impact Assessment (AIA) and Tree Protection Methods

9.1 Table 1 lists the potential effects the construction works will have on the subject trees. Mitigation measures are discussed in more detail below, and this information should be read in conjunction with the supporting Tree Protection Plan (TPP).

9.2 Further information on the subject trees is provided in Appendices 2 & 3.

**Table 1:** Potential effects on trees due to development

The impacts on trees due to this development	Category A trees affected	Category B trees affected	Category C trees affected
Trees to be removed to facilitate development		T2, 4	T3, T5
Soil compaction around retained trees		T6, G7	
Physical damage to stems of retained trees		T6	

### **9.3 Trees to be removed to facilitate development**

9.3.1 A group of four, maturing Himalayan Birches will need to be removed to facilitate development.

9.3.2 The trees are not well-suited for this location and will outgrow their surroundings pretty quickly; they will also smother the more valuable street tree (Field Maple T1).

9.3.3 To mitigate the loss of these trees, a single, better suited tree (a Malus 'Evereste') will be planted in the front garden, away from the Field Maple. The flowers and fruit of this tree will help support local biodiversity.

9.3.4 It is normally appropriate to deal with re-planting matters by condition or by way of a landscape plan; however, the re-planting location has been shown on the Tree Protection Plan (TPP); and the following details can be confirmed at this stage:

- The new tree will be of heavy standard size (about 3-4m high)
- The new tree will be planted in full accordance with current British Standards (BS 8545: From Nursery to Independence in the Landscape);
- Once planted, the tree will be regularly maintained (watered and weeded during the spring and summer months) for at least 5 years or until established.

### **9.4 Soil compaction around retained trees**

9.4.1 Soil compaction can be caused by various construction-related activities such as storage of materials and the use of heavy machinery (or even heavier than normal foot-fall during works). It is harmful to tree roots because it reduces gaseous exchange and the availability of water and nutrients.

9.4.2 To avoid soil compaction affecting the retained trees at this site, all vulnerable areas will be separated from the working area by protective fencing and ground protection.

9.4.3 The existing hard surface of the parking area around Sycamore T6 will provide ample protection for any roots growing beneath.

## **9.5 Physical damage to stems of retained trees**

9.5.1 The lower lateral branches of the Sycamore T6 are potentially vulnerable to damage from construction-related vehicles accessing the site.

9.5.2 To minimise this risk, protective fencing will be erected along its canopy extent.

## **10.0 Conclusions**

10.1 A group of four maturing Himalayan Birches will need to be removed from the front garden to facilitate development.

10.2 To mitigate, a replacement Malus 'Evereste' tree will be planted within the front garden (post-construction).

10.3 The retained trees will be protected using up-to-date methodology and guidance provided by the current British Standards (BS 58378:2012). To this end, a site-specific AMS and TPP have been provided. These are found in Section 11 and Appendix 9 respectively.

10.4 Provided the recommendations laid out in this report are followed, the proposals will not detrimentally affect the trees or the character / appearance of the local area.

10.5 The trees do not cause any significant conflicts in terms of construction activities, nor will any significant issues of post-development pressure be likely to emerge that could not be managed with routine, minor tree maintenance.

## **11.0 The Arboricultural Method Statement (AMS)**

11.1 Effective tree protection relies on following a logical sequence of events and arboricultural supervision. This AMS lays down the methodology for all construction works that may influence significant trees and recommendations for arboricultural supervision are provided in Section 12.

11.2 It is essential that this AMS is observed and adhered to. Therefore, a copy of this AMS must be issued to the building contractor to be integrated into their work schedule and must also be permanently made available on-site for the duration of development.

11.3 This AMS should be read in conjunction with the supporting Tree Protection Plan (TPP), which is found in Appendix 9.



11.4 At this site, operations are to occur in the following sequence (refer to Appendix 4 for further details on underlined methodology; which are listed in alphabetical order):

1. Carry out tree work operations **highlighted yellow** in the tree data schedule (Appendix 2). All tree works are to be carried out by a competent and experienced arborist to current British Standards (see Appendix 5.9 for assistance finding a suitable arborist).
2. Erect protective fencing along the position(s) shown by the dashed red line/s on the TPP.
3. Lay ground protection within the area(s) shown by the diagonal blue lines on the TPP.
4. Provide a photographic record of Tree Protection – to be signed off by arboriculturist.
5. Commence construction
6. Remove tree protection when all construction activity has ended.
7. Carry out tree planting and any other landscaping works.

## 12.0 Arboricultural supervision

12.1 A suitably-qualified arboriculturalist will provide on-going supervision during construction. The occasions when supervision is required are outlined in Table 2. If the LPA wish to see further supervision, this matter can be dealt with by amending the report and/or by condition.

**Table 2:** Indicative arboricultural supervision requirements

Supervision details	Required (Y / N)	When	Details	Nature	Sign off
Pre-commencement site meeting	N	Prior to any site activity	To ensure contractors are briefed & understand the AMS & TPP. A site supervisor will be appointed to oversee tree protection & the reporting of any damage to trees or deviation from the AMS – to the project arboriculturist / LPA	Informal and open discussions. Induction form signed by attendees	Details of meeting to be sent to LPA within 5 days
Meeting with tree contractors	N	Prior to protective measures being installed	To ensure tree work instructions are clear and understood.	Informal meeting	No follow up required
Protective measure(s) check	Y	Prior to any site activity	To ensure that protective measures are fit-for-purpose and correctly positioned.	Site meeting with a site monitoring report to be prepared	Details of to be sent to LPA within 5 days
On-going supervision	N	Every 2 weeks during construction	To ensure that the protective measures have not been moved and continue to be fit-for-purpose.	Site meeting with a site monitoring report to be prepared	Details of to be sent to LPA within 5 days
Supervision of excavation works near trees	N	During construction	To supervise key stages of works near trees (insert which / when)	Site meeting with a site monitoring report to be prepared	Details of to be sent to LPA within 5 days
Meeting with landscape contractors	N	After construction	To provide advice on tree / shrub selection (if not conditioned)	Informal meeting	No follow up required

12.2 A site inspection record (see Appendix 8) will be prepared after each visit and will state the condition of tree protection measures and outline any required remedial action (and timescales).

12.3 To demonstrate compliance, and to help the LPA discharge relevant planning conditions, all site monitoring reports will be forwarded to the LPAs arboricultural officer within 5 working days of the visit.

12.3 NOTE: It is the applicant's responsibility to arrange meeting dates with the arboriculturist.

### **13.0 Signature**

This report represents a true and factual account of the potential arboricultural impacts, and makes recommendations for appropriate protective measures, at the subject property.

#### **Signed**



.....

#### **Trevor Heaps**

Chartered Arboriculturist

**BSc (Hons), MArborA, MICFor.**

#### **Dated**

25<sup>th</sup> March 2020

## **Appendix 1 - Professional résumé**

I am Trevor Heaps, director of Trevor Heaps Arboricultural Consultancy Ltd. I am a Chartered Arboriculturist, a Professional Member of the Arboricultural Association (AA) and hold a First-Class Honours Degree in Arboriculture.

### **Professional training**

- Arboriculture and Bats: Scoping Surveys for Arborists (BCT & AA) – October 2017
- Tree Science (AA) – June 2016
- OPM (Oak Processionary Moth) Training (FC) – May 2016
- Visual Tree Assessment (Arboricultural Association) - October 2015
- Trees and the Law (Dr Charles Mynors) - June 2015
- Mortgage (Home Buyers) Report Writing (LANTRA / CAS) - February 2015
- Tree Preservation Orders - effective application (LANTRA / CAS) - November 2014
- Professional Tree Inspection 3-day course (LANTRA / AA) - July 2014
- Arboricultural Consultancy Course (AA) - May 2014
- Further down the subsidence trail 1-day course (AA) - April 2013
- Getting to grips with subsidence 1-day course (AA) - November 2012

AA – Arboricultural Association

BCT – Bat Conservation Trust

CAS – Consulting Arborist Society

FC – Forestry Commission

## Appendix 2 - Tree data schedule

Ref	Name	Age	DBH (mm)	Hgt. (m)	Can. hgt. (m)	Can N (m)	Can E (m)	Can S (m)	Can W (m)	Physio cond.	Struct cond.	Life Exp.	Ret. Cat.	Comments	Rec's (proposed works are highlighted)
T1	Acer campestre (Field Maple)	EM	215	7	3	3	3	3	3	Normal	Normal	40+	A2	Maturing street tree growing in tree pit. Good form and good health. Future growth is likely to be affected by the nearby branches of the Himalayan Birches T2 and T3	N/A - Third party tree.
T2	Betula utilis 'Jacquemontii' (Himalayan Birch)	EM	165,85	9	5	2.5	2.5	2.5	2.5	Normal	Normal	40+	B2	Crown lifted in past. Twin-stemmed. Growing directly behind a maturing street tree (T1)	Remove to facilitate development
T3	Betula utilis 'Jacquemontii' (Himalayan Birch)	EM	120	9	5	2.5	2.5	2.5	2.5	Normal	Normal	40+	C2	Crown lifted in past. Tree below 150mm in diameter so BS category downgraded to C. Growing directly behind a maturing street tree (T1)	Remove to facilitate development
T4	Betula utilis 'Jacquemontii' (Himalayan Birch)	EM	150,120,135	9	5	2.5	2.5	2.5	2.5	Normal	Normal	40+	B2	Crown lifted in past. Triple-stemmed.	Remove to facilitate development
T5	Betula utilis 'Jacquemontii' (Himalayan Birch)	EM	110,110,90	9	5	2.5	2.5	2.5	2.5	Normal	Normal	40+	C2	Crown lifted in past. Triple-stemmed. Tight forks noted.	Remove to facilitate development
T6	Acer pseudoplatanus (Sycamore)	M	380	14	4	4	4	4	4	Normal	Normal	40+	B2	Self-seeded tree growing on the edge of a raised parking area. The retaining wall to the west is only about 1m from the main stem. The adjacent garage area is about 1m lower than the tree - and so the tree will have limited / no roots on its western side. The retaining wall is cracked and leaning away from the tree. BS category down-graded due to limited life expectancy.	No works required at present.
G7	Tilia X europaea (Common Lime)	M	500	16	6	3	3	3	3	Normal	Fair	40+	B2	Lapsed pollard managed by crown reductions. Epicormics.	No works required at present.

### Appendix 3 - Tree data schedule explanatory notes

This section explains the terms used in the **Tree data schedule** (Appendix 2).

**Ref:** Each item of vegetation has its own unique number, prefixed by a letter such that:

**T**<sub>1</sub>=Tree                **S**<sub>2</sub>=Shrub or stump                **G**<sub>3</sub>=Group                **H**<sub>4</sub>=Hedge                **W**<sub>5</sub>=Woodland

**Species:** Latin (and common names in brackets) are given.

**Age:**

- **Y - Young** - Usually less than 10 years' old
- **SM - Semi-mature** - Significant future growth to be expected, both in height and crown spread (typically below 30% of life expectancy)
- **EM - Early-mature** - Full height almost attained. Significant growth may be expected in terms of crown spread (typically 30-60% of life expectancy)
- **M - Mature** - Full height attained. Crown spread will increase but growth increments will be slight (typically 60% or more of life expectancy)
- **V - Veteran** - A level of maturity whereby significant management may be required to keep the tree in a safe condition
- **OM - Over-mature** - As for veteran except management is not considered worthwhile

**DBH (mm):** Stem diameter, measured in mm, taken at 1.5m above ground level where possible.

**Hgt. (m): Height:** Measured from ground level to the top of the crown in metres.

**Can Hgt. (m): Crown height:** Measured from ground level to the lowest tips of the main crown begins in metres. Where the crown is unbalanced it is measured on the side deemed to be most relevant. This is usually the side facing the area of anticipated development.

**Can N, S, E, W: - Canopy extents**

Approximate radial crown spread measured to the four cardinal points (for individual trees only)

**Physio cond.:** Indicates the physiological condition of the tree as one of the following categories:

- **Normal** - Healthy tree with no symptoms of significant disease
- **Fair** - Tree with early signs of disease, small defects, decreased life expectancy, or evidence of less-than-average vigour for the species
- **Poor** - Significant disease present, limited life expectancy, or with very low vigour for the species and evidence of physiological stress
- **Very poor** - Tree is in advanced stages of physiological failure and is dying
- **Dead** - No leaves or signs of life

**Struct cond.:** Indicates the structural condition of the tree as one of the following categories:

- **Normal** - No significant structural defects noted
- **Fair** - Some structural defects noted but remedial action not required at present
- **Poor** - Significant defects noted resulting in a tree that requires regular monitoring or remedial action
- **Very poor** - Major defects noted that compromise the safety of the tree. Remedial works or tree removal is likely to be required.
- **Dead** - No leaves or signs of life

**Life Exp.:** The estimated number of years before the tree may require removal (<10), (10 – 20), (20 – 40), or (40+).

**Ret. Cat.:** - **Retention category:** BS5837:2012 Category where:

- **U = Trees unsuitable for retention.** Trees in such a condition that cannot realistically be retained as living trees in the context of the current land use for longer than 10 years. These trees are shown on the tree plans with red centres.
- **A = Trees of high quality.** Trees of high quality with an estimated remaining life expectancy of at least 40 years. These trees are shown on the tree plans with green centres.
- **B = Trees of moderate quality.** Trees of moderate quality with an estimated remaining life expectancy of at least 20 years. These trees are shown on the tree plans with blue centres.
- **C = Trees of low quality.** Trees of low quality with an estimated remaining life expectancy of at least 10 years, or young trees with a stem diameter below 150mm. These trees are shown on the tree plans with grey centres.

Trees of notable quality are graded as Category A or Category B. These trees are sometimes divided further into sub-categories:

- Sub-category 1 is allocated where it has been assessed that the tree has mainly arboricultural qualities.
- Sub-category 2 is allocated where it is assessed that the tree has mainly landscape qualities.
- Subcategory 3 is allocated where it is assessed that the tree has mainly cultural qualities, including conservation.

Trees may be allocated more than one sub-category. All sub-categories carry equal weight, with for example an A<sub>3</sub> tree being of the same importance and priority as an A<sub>1</sub> tree.

**Comments:** Tree form and pruning history are also recorded along with an account of any significant defects.

**Rec's - Recommendations:** Usually based on any defects observed and intended to ensure that the tree is in an acceptable condition.

## Appendix 4 – Specifications for tree protective measures

### Ground Protection

The following is based on an extract from British Standard 5837:2012 - Trees in relation to design, demolition and construction– Recommendations.

Temporary ground protection should be able to support any traffic entering or using the site without being distorted or causing compaction of underlying soil and might comprise one of the following:

- a) for pedestrian-movements only, a single thickness of scaffold boards placed either on top of a driven scaffold frame, to form a suspended walkway, or on top of a compression-resistant layer (e.g. 100 mm depth of woodchip), laid onto a geotextile membrane;*
- b) for pedestrian-operated plant up to a gross weight of 2 t, proprietary, inter-linked ground protection boards placed on top of a compression-resistant layer (e.g. 150 mm depth of woodchip), laid onto a geotextile membrane;*
- c) for wheeled or tracked construction traffic exceeding 2 t gross weight, an alternative system (e.g. proprietary systems or pre-cast reinforced concrete slabs) to an engineering specification designed in conjunction with arboricultural advice, to accommodate the likely loading to which it will be subjected.*

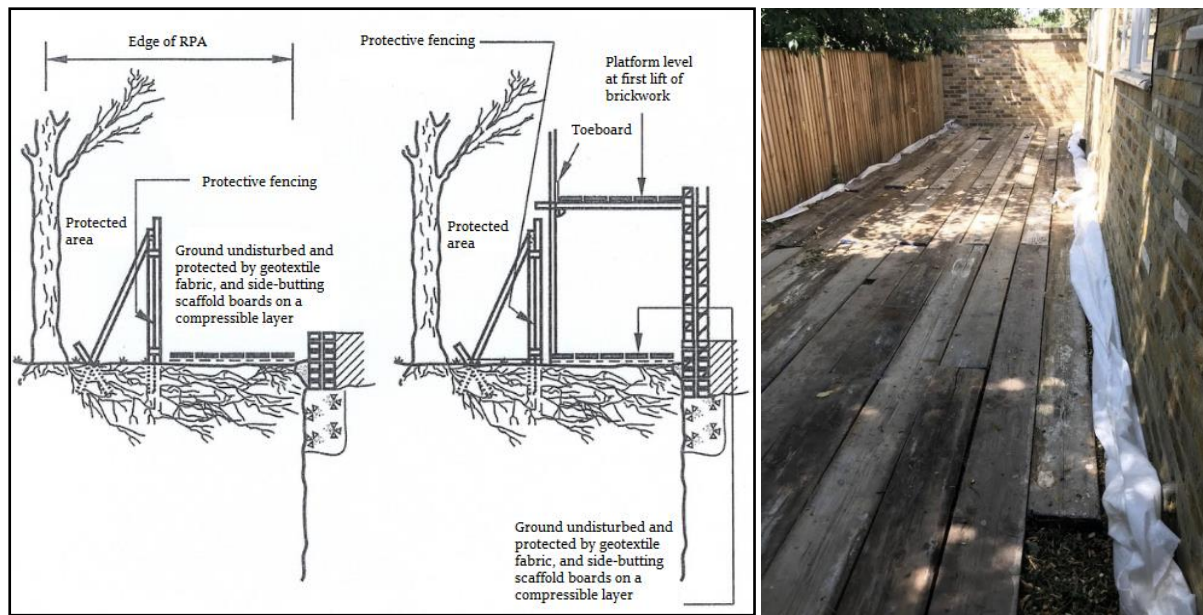
The location of the temporary ground protection is shown on the tree protection plan and detailed within the arboricultural method statement.

In all cases, the objective should be to avoid compaction of the soil, which can arise from the single passage of a heavy vehicle, especially in wet conditions, so that tree root functions remain unimpaired.

All ground protection is to be maintained in good order, so it is fit for purpose throughout development. The ground protection will not be altered in any way, or prematurely removed without prior consent of the project arboriculturist or the LPA arboricultural officer.



**Figure 1:** An example of ground protection on work areas within a RPA (BS 5837:2005).

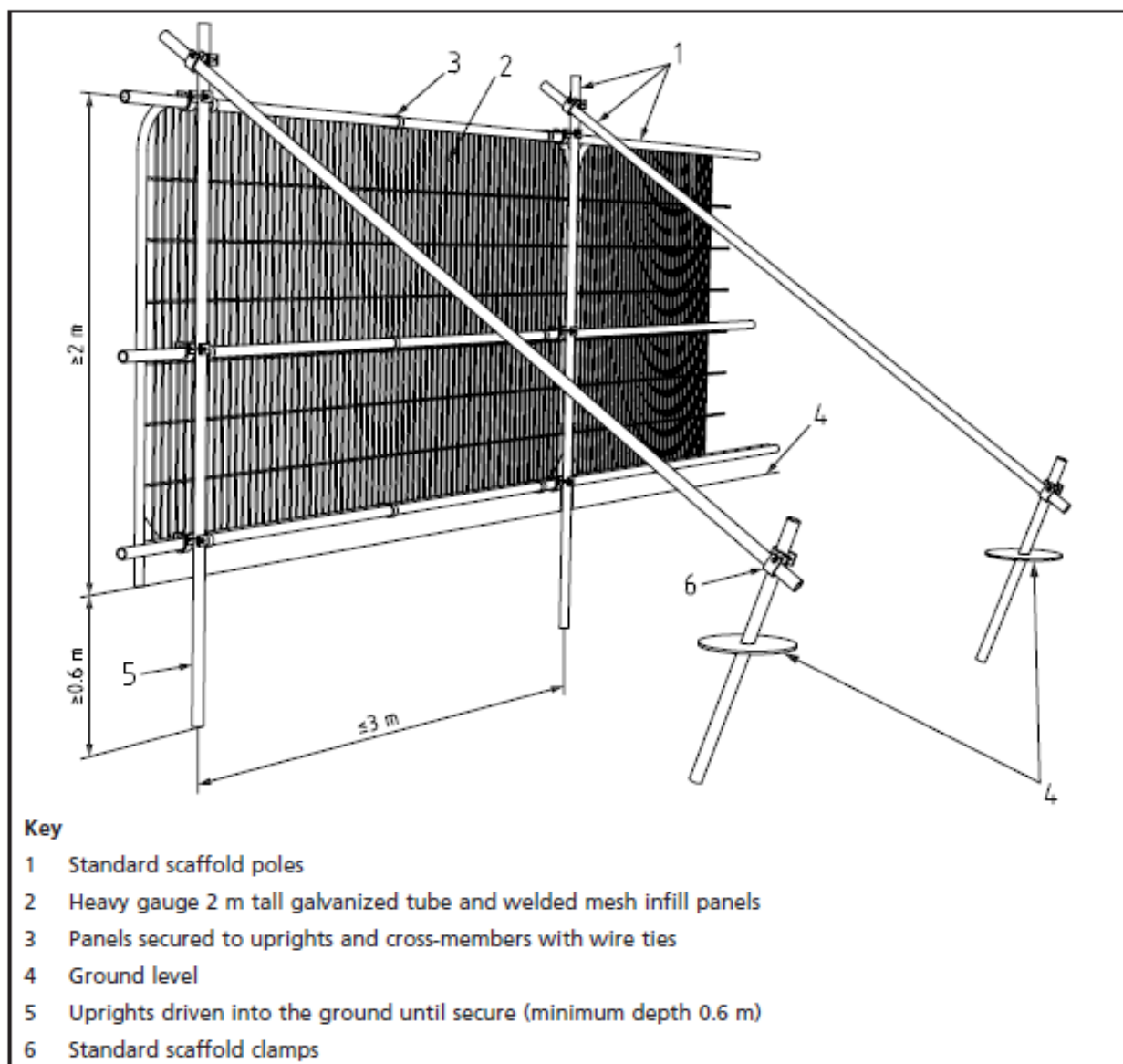


## **Protective fencing**

The following is based on an extract from British Standard 5837:2012 - Trees in relation to design, demolition and construction- Recommendations.

The framework support (shown in Figure 2 and photo 1) is the usual method of support for 'Heras' fencing. Some variations are possible if site conditions are appropriate; i.e. support by wooden posts (75mm x 75mm x 2.75m) dug or concreted into the ground (dry mix concrete contained within a plastic bag), or if there is no pressure for access, a lighter form of netting on stakes.

**Figure 2:** Default specification for protective barrier (BS 5837:2012)



**Photo 1:** A worked example of the default specification for protective barrier (BS 837:2012)



Durable, all-weather signs are to be attached to the fencing (an example sign is provided below). These shall be printed, laminated and attached at regular intervals along the fencing.

Once erected, the protective fencing is to be regarded as sacrosanct and there is to be no access into the area protected by it - the construction exclusion zone (CEZ).

The protective fencing is to be maintained in good order, so it is fit for purpose throughout the construction process. The fencing will not be altered in any way, or prematurely removed without prior consent of the project arboriculturist and/or (if necessary) the LPA arboricultural officer.

Where specified in the AMS, the tree(s) stem/s shall be boxed off with wooden ply boards or wrapped in hessian and chestnut pale fencing. This will help avoid any direct damage to tree stems from passing machinery (see photo 2).



**Photo 2:** Trees protected by hessian & chestnut pale fencing / limbs protected by wooden boxing



# TREE PROTECTION FENCING

## KEEP OUT

This fencing must not be removed  
or altered in any way without prior  
consultation with the project  
arboriculturist!

Please report any damage to trees  
and/or fencing to the site manager  
or the project arboriculturist

Trevor Heaps

07957 763 53

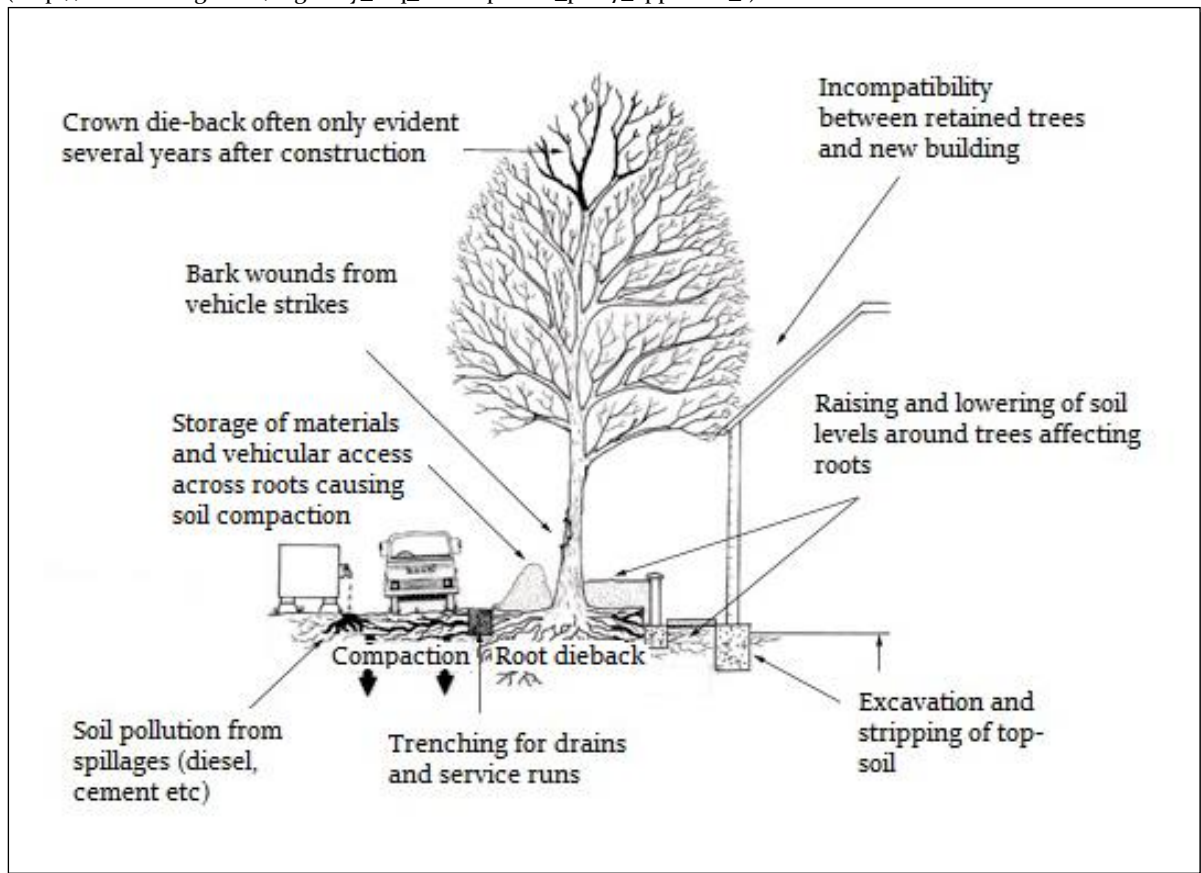
### **Soft landscaping within or close to the Root Protection Areas (RPAs) of retained trees**

The following precautions are necessary to avoid damage to trees (where activities are to take place within their RPAs):

- Ground levels will not be changed;
- Soil must be of good quality and free of contaminants and other foreign objects potentially injurious to tree roots. The topsoil must satisfy the requirements of BS3882:200;
- No heavy machinery will be operated within the RPAs of retained trees during the installation of soft landscaping;
- Unwanted vegetation shall be removed manually or by using systemic herbicide that will not damage tree roots;
- No fuels or chemicals shall be used or stored within these areas; and
- No irrigation or drainage pipes shall be installed within the RPAs

## Appendix 5 – General precautions and further information

**Figure 4:** Common problems for trees on development sites  
([http://www.leics.gov.uk/highway\\_req\\_development\\_part7\\_appendix\\_f](http://www.leics.gov.uk/highway_req_development_part7_appendix_f))



**5.1 Services and drainage:** Surface run-off water shall be sent to soakaways located outside the RPAs of retained tree(s). If trenching is required within the RPA of retained trees to provide routes for services, this work shall be undertaken using mole boring and / or hand digging (under arboricultural supervision).

**5.2 Storage of materials:** No materials or spoil are to be stored within areas protected by protective fencing and/or ground protection. The same applies for existing hard surfaces that are being used as ground protection.

**5.3 Spillages:** If any cement residues fall within root protection areas, it shall be swept up, bagged and removed from site – it shall not be washed away with water.

**5.4 Demolition:** Where any existing structures are to be demolished, they will be done so inwardly (away from root protection areas / retained soil).

**5.5 Levels:** There is to be no alteration of ground levels within the area protected by protective fencing and/or ground protection, unless previously specified and agreed upon. The same applies for existing hard surfaces that are being used as ground protection.

**5.6 Fires:** No fires are to be lit within 20 metres of the stems of retained trees.

**5.7 Above ground damage to trees:** Care must be taken in planning the location and operation of machinery to avoid above ground damage to trees. BS5837 (2012) Section 6.2.4.1 states *'Planning of site operations should take sufficient account of wide loads, tall loads and plant with booms, jibs and counterweights (including drilling rigs) in order that they can operate without contacting retained trees. Such contact can result in serious damage to trees and might make their safe retention impossible. Consequently, any transit or traverse of plant in proximity to trees should be conducted under the supervision of a banksman, to ensure that adequate clearance of trees is always maintained. Access facilitation pruning should be undertaken where necessary to maintain this clearance.'*

**5.8 Remedial works and soil improvement:** Exposed soils are easily compacted resulting in loss of water and gaseous exchange; this can lead to root death (and subsequently tree death).

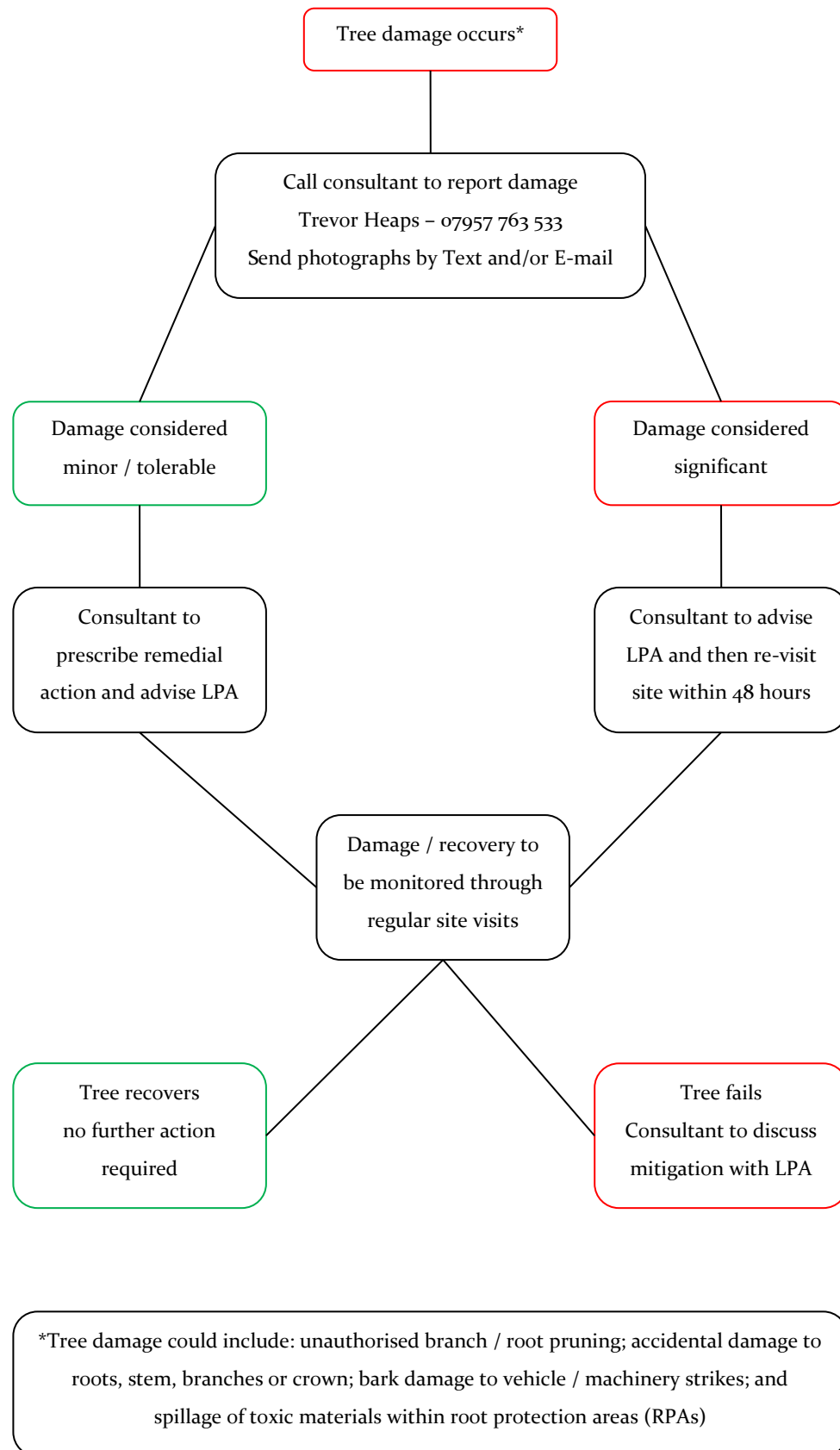
**5.8.1** To relieve ground compaction, which may have resulted from the use of vehicles or by the storage of materials, the soils should be broken up to allow air to penetrate and for the soil structure to be restored. There are various methods to achieve this, such as: auguring the soil by hand / fork or pneumatic excavation (e.g. with an air spade); both should be combined with soil structure improvements (see 5.8.2).

**5.8.2** The soil structure can be improved by incorporating a compost or mulch within the topsoil, of 75-100mm in depth. This can be spread over the surface and gently forked into the soil. If bark chip is used as mulch, NPK fertilizer should be added to counteract the nitrogen depletion of the soil. There is also the option of adding mycorrhizal fungal which may also improve root function.

**5.9 Choosing an arborist:** When appointing a tree works contractor, please only use properly qualified and experienced companies who comply with current British Standards (3998) and always check that they carry Public Liability Insurance within a minimum of £2,000,000 cover, and the relevant Employers Liability Insurance. A list of contractors approved by the Arboricultural Association can be found at [www.trees.org.uk](http://www.trees.org.uk) or by calling 01242 522 152.



## Appendix 6 - Procedure to follow in case of damage to retained trees



## Appendix 7 - Induction form for all site personnel

**Site name:** .....

**App. No.:** .....

**Appointed Site Supervisor:** .....

- I have had explained to me by the Site Manager the key implications of the Arboricultural Method Statement relating to the development at the above site.
- I am aware that trees have shallow roots and any excavation works beneath the canopy could cause irreparable damage.
- I am aware that the tree protective fencing / ground protection must remain in its original position and must not be moved without the approval of the appointed Arboricultural Consultant.
- I understand that certain operations must be supervised by the appointed Arboricultural Consultant and that these must not start until the consultant is present and has given approval.
- I confirm that I will bring any concerns about potential damage to trees to the attention of the Site Manager.
- I am aware that I must not cause damage to any of the retained trees on or adjacent to the site. Damage may be caused by direct means (i.e. physical damage caused to roots or the trunk/branches of the tree) or by indirect means (e.g. by fire or toxic materials entering the rooting environment of the tree).

**Print Name:** .....

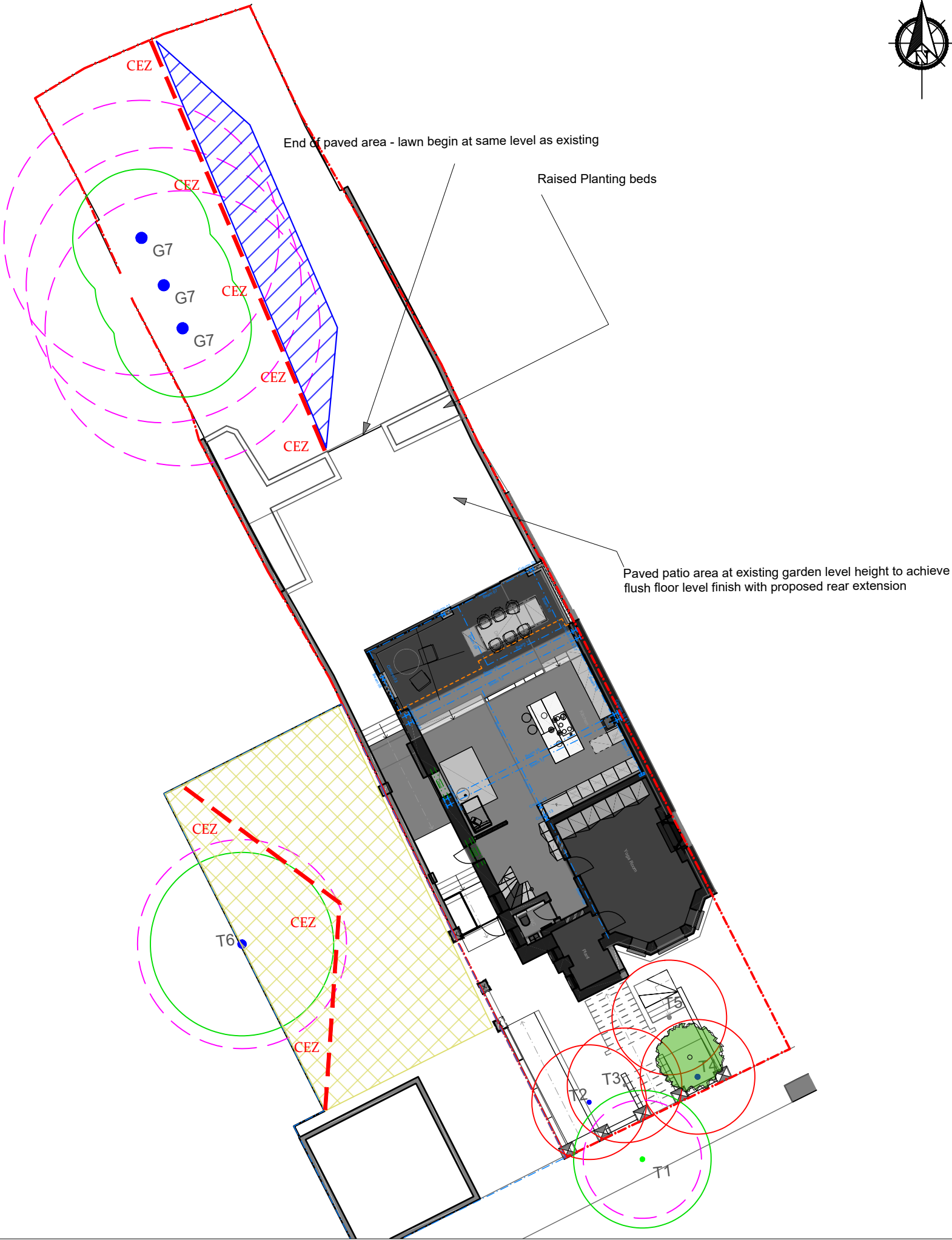
**Sign Name:** .....

**Date:** .....

### Appendix 8 - Site inspection record

Date: .....  Time: .....  Site: .....	Planning reference: .....  		
<p style="text-align: center;">Those present in addition to project arboriculturist:</p> <p>Client / Agent: .....</p> <p>Project / Site manager: .....</p> <p>LPA arboricultural officer: .....</p> <p>Other (specify): .....</p>			
	<b>Yes</b>	<b>No</b>	<b>Notes</b>
Tree protection measures located in accordance with TPP?			
Any disturbance within construction exclusion zone?			
Any materials stored within construction exclusion zone?			
Any evidence of damage to tree roots, stems or canopies?			
Any works programmed before next planned site visit that may affect retained trees? (if yes, provide details below)			
Additional site visit required to ensure compliance with required action? (Y / N) Proposed visit date:			
Signed: .....		Date: .....	

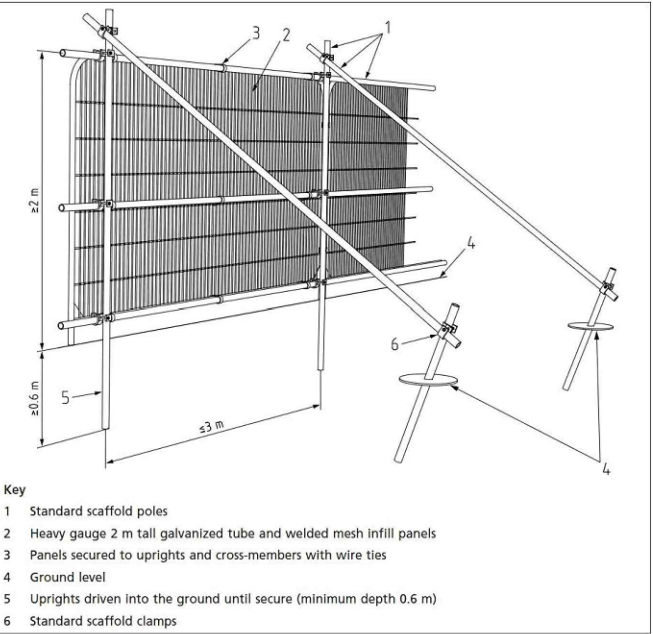
Appendix 11: Tree Protection Plan



- At this site, operations are to occur in the following sequence:
1. Carry out tree work operations highlighted yellow in the tree data schedule (Appendix 2). All tree works are to be carried out by a competent and experienced arborist to current British Standards (see Appendix 5.9 for assistance finding a suitable arborist).
  2. Erect protective fencing along the position(s) shown by the dashed red line/s on the TPP.
  3. Lay ground protection and/or retain suitably hard-wearing existing hard surfaces within the area(s) shown by the diagonal blue lines on the TPP.
  4. Commence construction
  5. Remove tree protection when all construction activity has ended.
  6. Carry out tree planting and landscaping works.

- Temporary ground protection should be able to support any traffic entering or using the site without being distorted or causing compaction of underlying soil and might comprise one of the following:
1. For pedestrian-movements only, a single thickness of scaffold boards placed either on top of a driven scaffold frame, to form a suspended walkway, or on top of a compression-resistant layer (e.g. 100 mm depth of woodchip), laid onto a geotextile membrane;
  2. For pedestrian-operated plant up to a gross weight of 2 t, proprietary, inter-linked ground protection boards placed on top of a compression-resistant layer (e.g. 150 mm depth of woodchip), laid onto a geotextile membrane;
  3. For wheeled or tracked construction traffic exceeding 2 t gross weight, an alternative system (e.g. proprietary systems or pre-cast reinforced concrete slabs) to an engineering specification designed in conjunction with arboricultural advice, to accommodate the likely loading to which it will be subjected.
- NOTE: If ground protection is to be laid near areas to be excavated, sheet piling should be used to shore up the sides of the excavations prior to being used (by pedestrians or machinery)

Default specification for protective fencing



Plan Legend

- Tree/s to be retained
- Tree/s to be removed

Centre colours

- Category A Tree
- Category B Tree
- Category C Tree
- Category U Tree

Groups are shown as polygons using the above colours to represent quality

Root Protection Area (RPA)  
If amended, the original is a dotted blue circle

Protective fencing

Construction & storage exclusion zone

Ground protection

Existing hard surface to remain

Suggested tree planting location for a new Malus 'Evereste' tree

Scale: 1:200 @ A3  
0 4m 8m

Site Address: 14 Prince Arthur Road  
Hampstead, London, NW3 6AU

Client: Mr and Mrs Holskjaer  
Drawing No: TH/A3/2171C/TPP

Job Ref: TH 2171C Date: 25/03/2020

Trevor Heaps  
Aboricultural Consultancy Ltd



07957 763 533  
trevor@trevorheaps.co.uk  
www.trevorheaps.co.uk