

Base & Build Details- Tree Protection measures

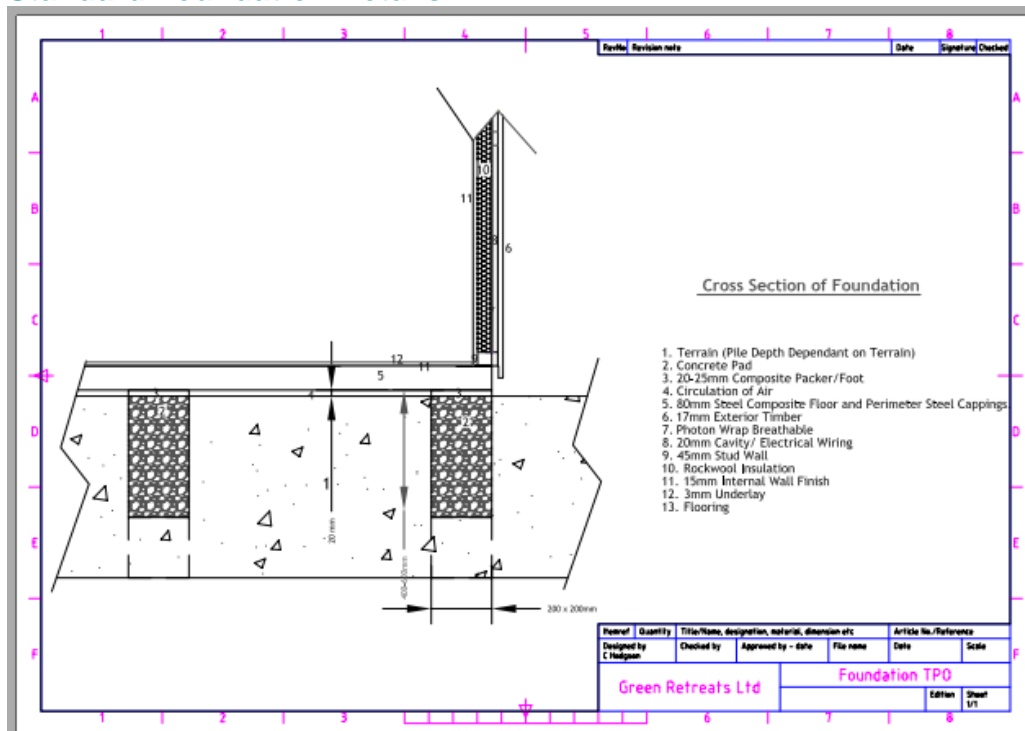
- Green Retreats Ltd have been appointed to build a timber clad building at 10 Lymington Road. NW6 1HY- Style Edge <https://www.greenretreats.co.uk/>
- The Green Retreat studios are prefabricated panel structures assembled by hand and have an installation time of 2-7 days.
- No trees will need to be removed as a result of this build & no trees have in the proximity have TPO
- There are 3 trees within possible falling distance so we will therefore ensure the build does not impact any underlying root systems
- We've included in this document details on the proposed method for building the foundation (see next page)
- The proposed method will ensure protection of the underlying roots if required by:-
 - Limiting the depth of the foundation
 - Hand-digging holes to allow the local manipulation required to avoid impacting roots
 - Protecting any roots uncovered through the build
 - Lining holes with plastic if a root system is within the build area this will ensure no concrete mix comes into contact with root systems
 - Mixing the concrete away from the site / roots (and on a covered surface)
 - Establishing continuous monitoring of the build practices to ensure no trees are impacted
- See details below of our standard piles system & the system for trees



- **Structure Location:**
Proposed structure location
Dimensions are 5.2 (width) x 3.6m (depth) x 2.5 (height)

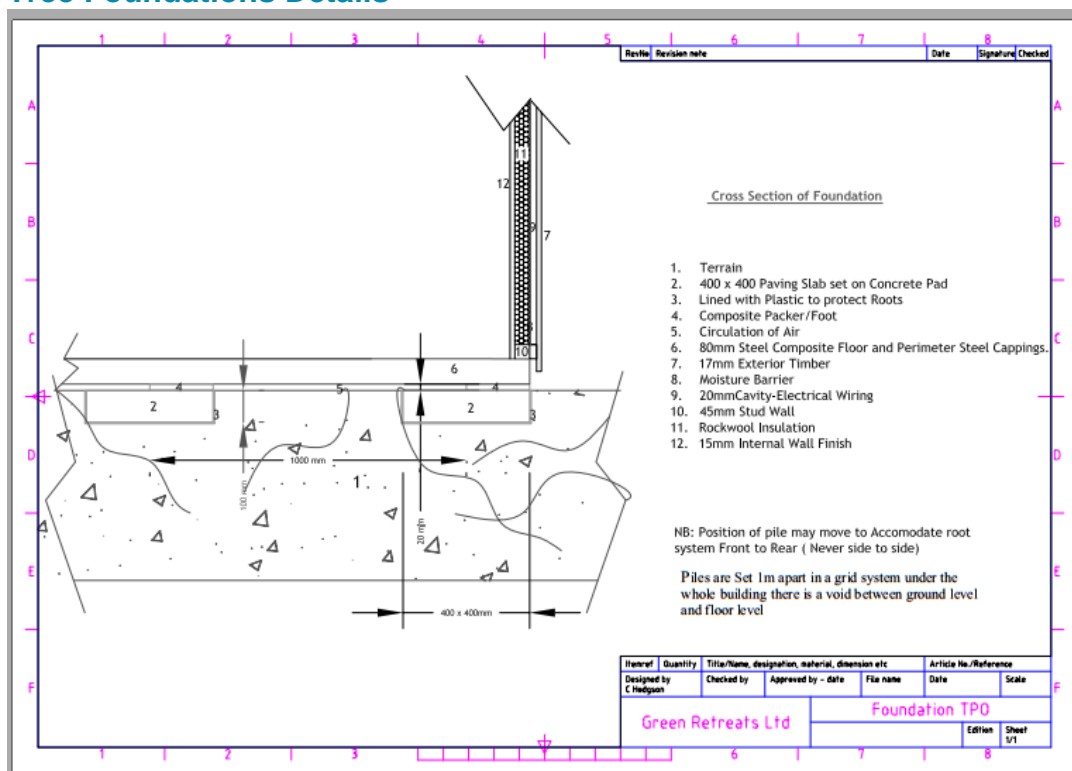
- **Tree Location:**
No trees located in property only in neighboring gardens a distance from the proposed structure

Standard Foundation Details



Concrete piles are at a depth of 400-600mm dependent on soil type

Tree Foundations Details



Concrete piles are at a depth of 150- 200mm

Typical layout of concrete piles for building with an internal size of 5 x 3m

The piles are set at 1m internal under the entire base .

