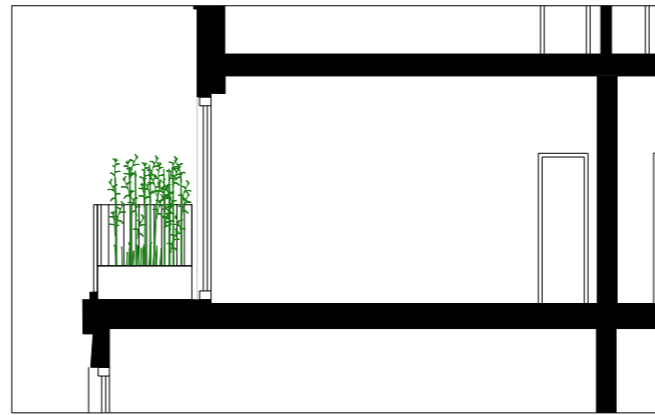
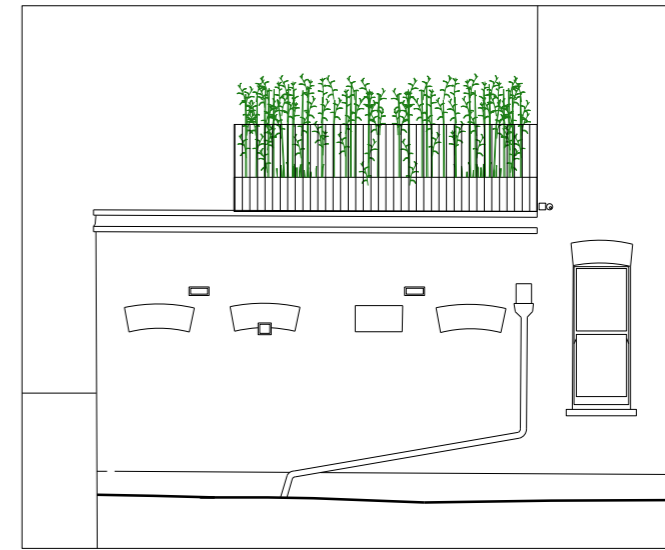


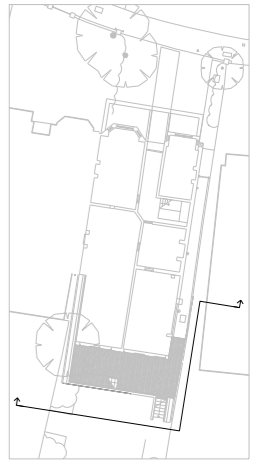
Extract of Western elevation showing translucent glass balustrade to match profile of neighbours balustrade at 1st floor



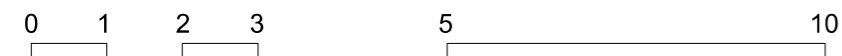
Extract of Eastern elevation showing translucent glass balustrade at 1st floor



251 Goldhurst Terrace
NW6 3EP



Proposed metal balustrade



NOTES:
Do not scale from this drawing

REVISION:

- A 23/10/2019 Tile hanging hatch amended
- B 30/01/2020 Terrace amended

PLANNING APPLICATION
251 GOLDHURST TERRACE
Proposed
Rear Elevation

August 2019

G M L Architects

UNIT 3,1-4 Christina Street, London EC2A 4PA
Tel: 020 7729 9595 Fax: 020 7729 1801 Info@gmlarchitects.co.uk

SCALE: 1:100@A3
ISSUED FOR: PLANNING

4742/MMA/07b