

DO NOT SCALE

NOTES:

- UNTIL TECHNICAL APPROVAL HAS BEEN OBTAINED FROM THE RELEVANT LOCAL AUTHORITIES OR STATUTORY BODIES (I.E. LONDON BOROUGH OF CAMDEN, THAMES WATER AND BUILDING CONTROL), IT SHOULD BE UNDERSTOOD THAT ALL DRAWINGS ARE ISSUED AS PRELIMINARY AND NOT FOR CONSTRUCTION. SHOULD THE CONTRACTOR AND / OR EMPLOYER COMMENCE WORK PRIOR TO APPROVAL BEING GIVEN, IT IS ENTIRELY AT THEIR OWN RISK.
- THIS DRAWING SHOULD BE READ IN CONJUNCTION WITH ALL STRUCTURAL, ARCHITECTURAL AND PUBLIC HEALTH RELEVANT DOCUMENTATION, DRAWINGS AND STANDARD DETAILS.
- ALL DIMENSIONS ARE IN MILLIMETRES UNLESS STATED OTHERWISE.
- ALL LEVELS ARE IN METRES ABOVE ORDNANCE DATUM UNLESS STATED OTHERWISE.
- ANY DISCREPANCIES IN THE DETAILS SHOWN ARE TO BE REPORTED TO THE EMPLOYER'S REPRESENTATIVE/ENGINEER FOR CLARIFICATION.
- ALL PRIVATE DRAINAGE WORKS ARE TO COMPLY WITH THE REQUIREMENTS OF BS EN 752 - DRAIN AND SEWER SYSTEMS OUTSIDE BUILDINGS, AND BUILDING REGULATIONS APPROVED DOCUMENT H - DRAINAGE AND WASTE DISPOSAL, 2015 EDITION. ANY ADOPTABLE DRAINAGE IS TO COMPLY WITH THE REQUIREMENTS OF THAMES WATER, SEWERS FOR ADOPTION (LATEST EDITION) AND THE CIVIL ENGINEERING SPECIFICATION FOR THE WATER INDUSTRY (LATEST REVISION) WHERE APPROPRIATE.
- ALL PIPES ARE TO BE CAST IRON TO BS 437:2008 AND BS EN 877:1999
- ALL PIPES NOT WITHIN THE STRUCTURAL SLAB SHALL HAVE FLEXIBLE JOINTS IN ACCORDANCE WITH MANUFACTURER'S SPECIFICATIONS.

F1	22/11/2019	RJ	ENABLING WORKS TENDER ISSUE	LC	LC
REV	DATE	BY	DESCRIPTION	CHK	APP

DRAWING STATUS: **D2 - ISSUED FOR TENDER**



WSP House, 70 Chancery Lane, London, WC2A 1AF, UK
T+ 44 (0) 207 314 5000, F+ 44 (0) 207 314 5111
wsp.com

CLIENT: **LBS PROPERTIES**

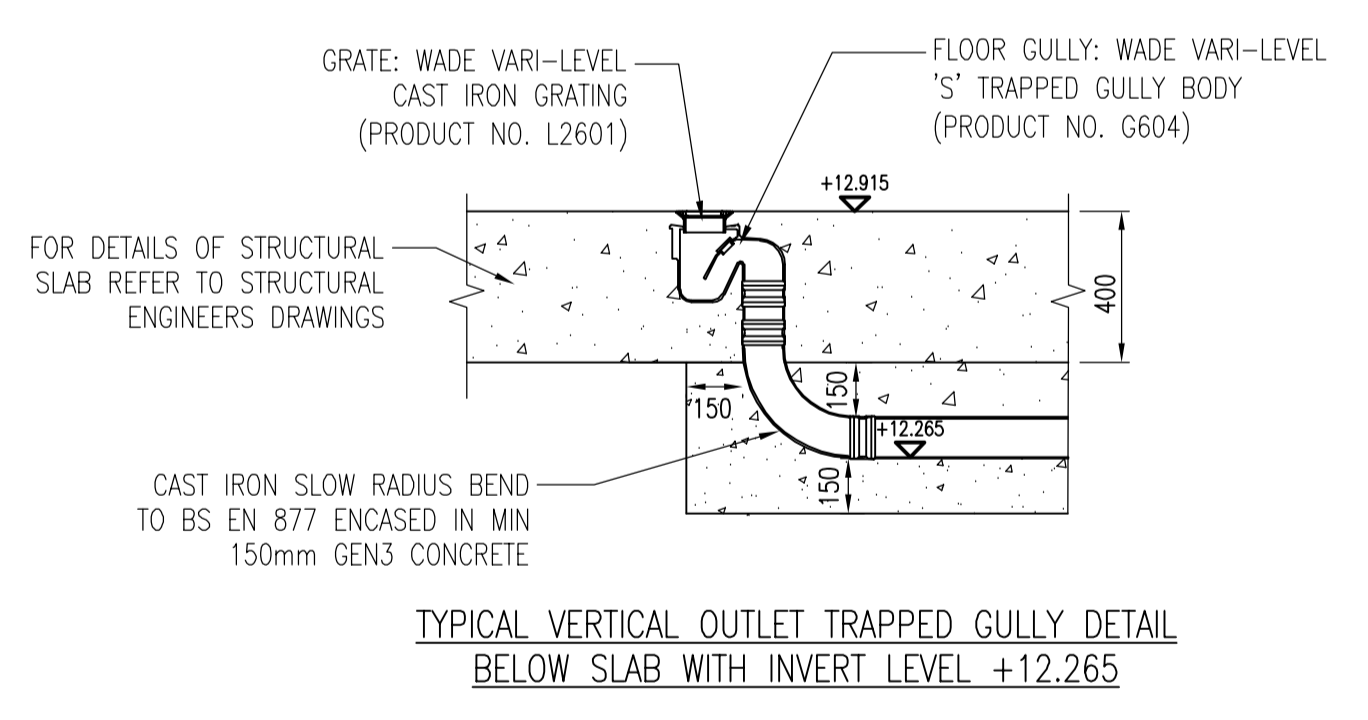
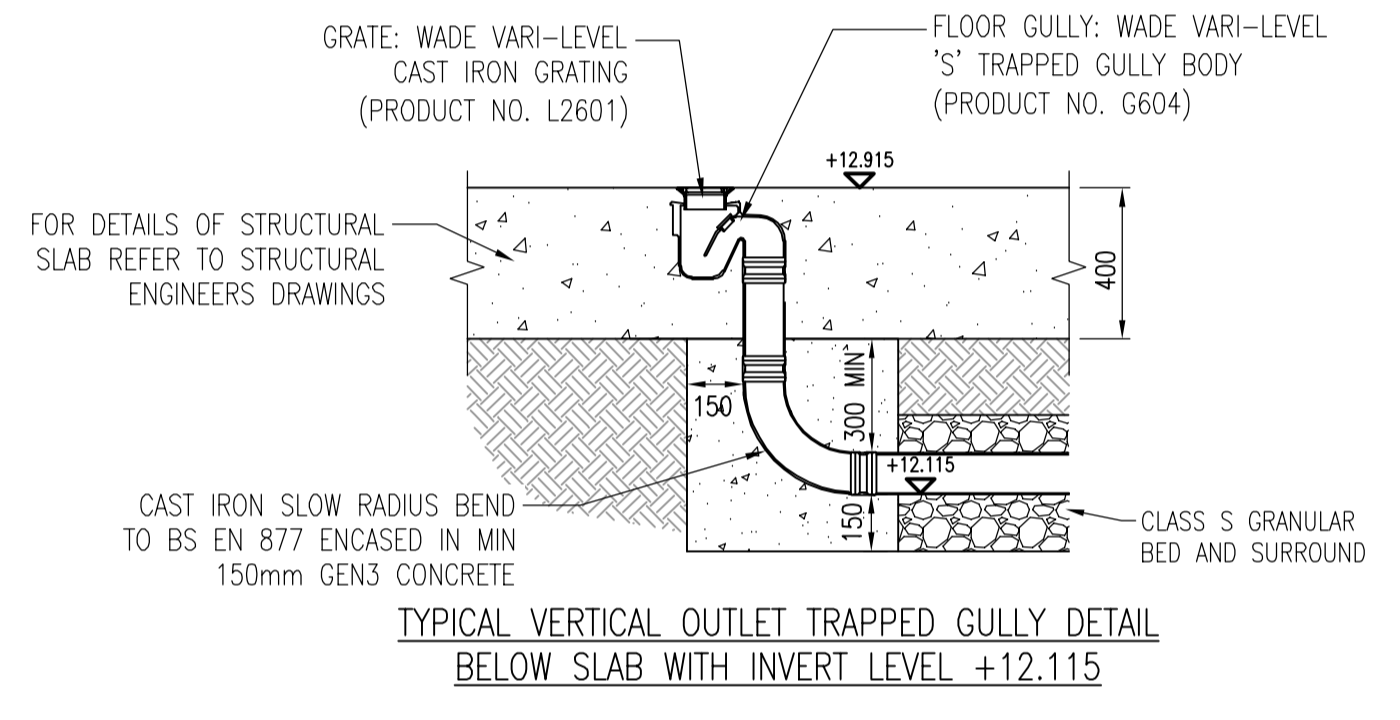
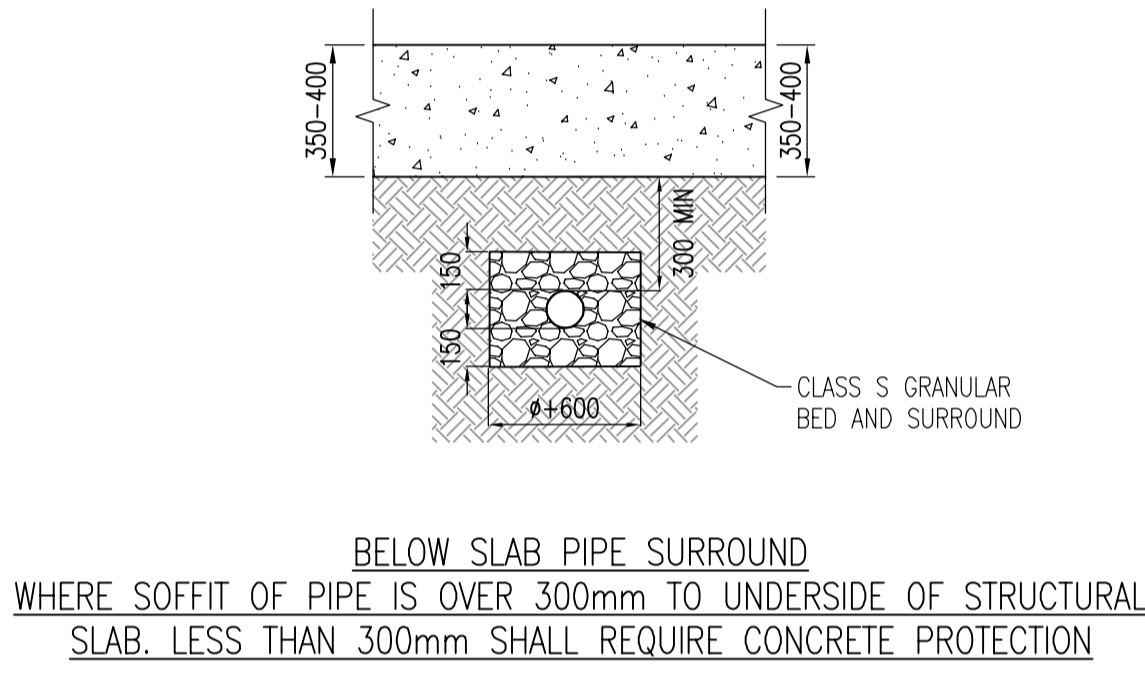
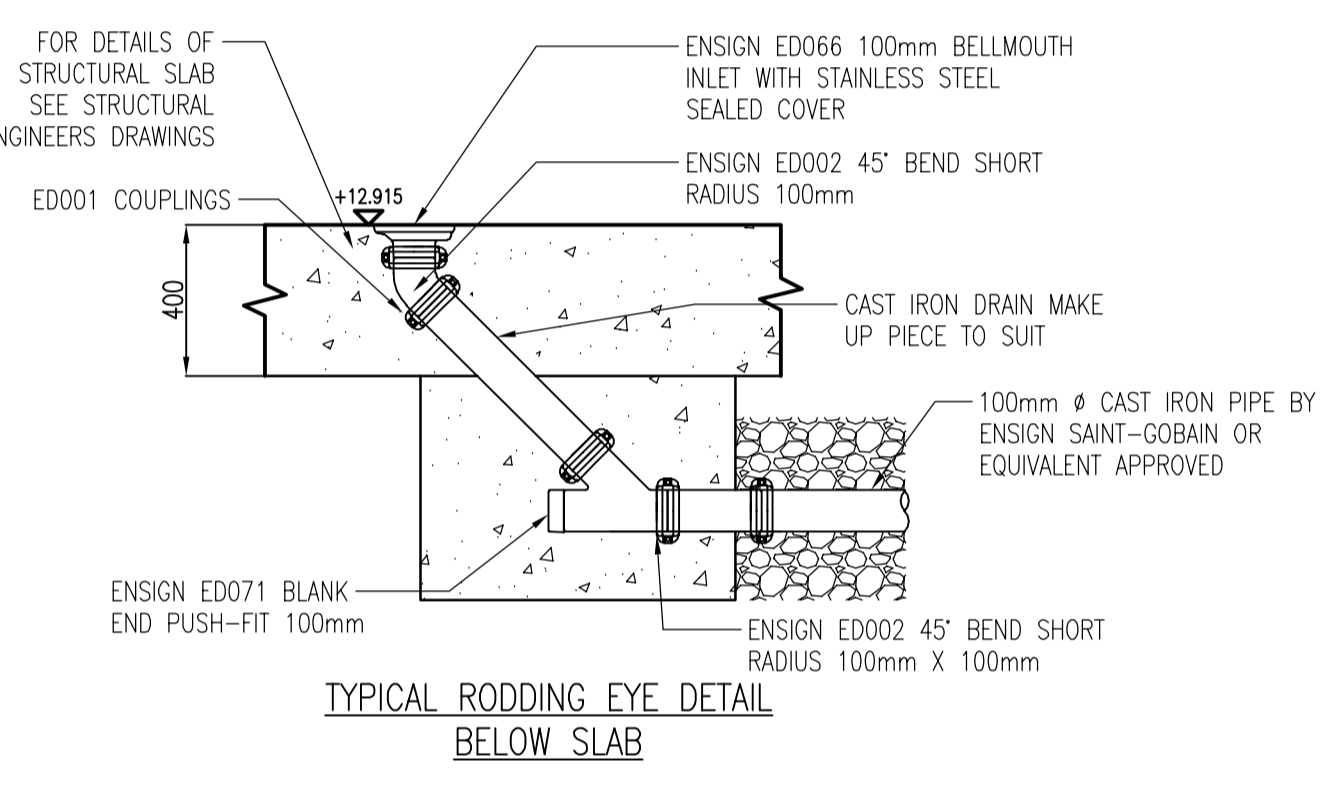
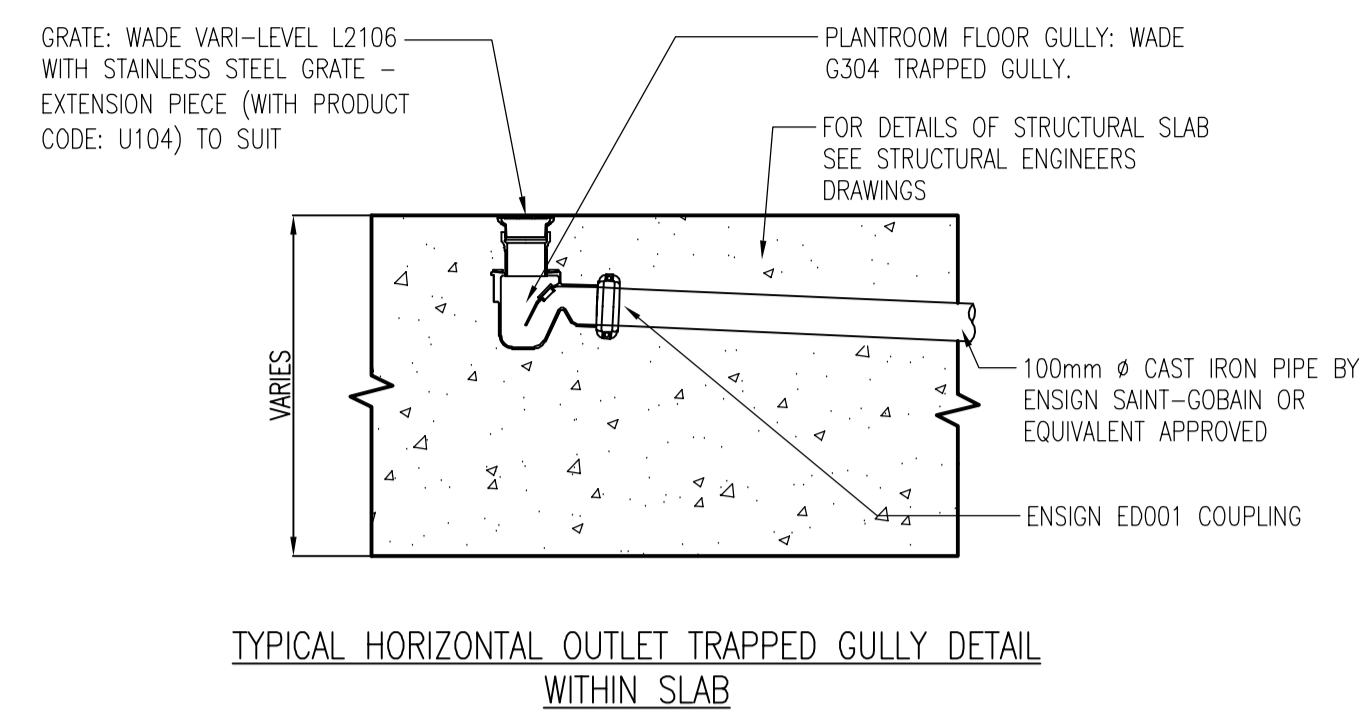
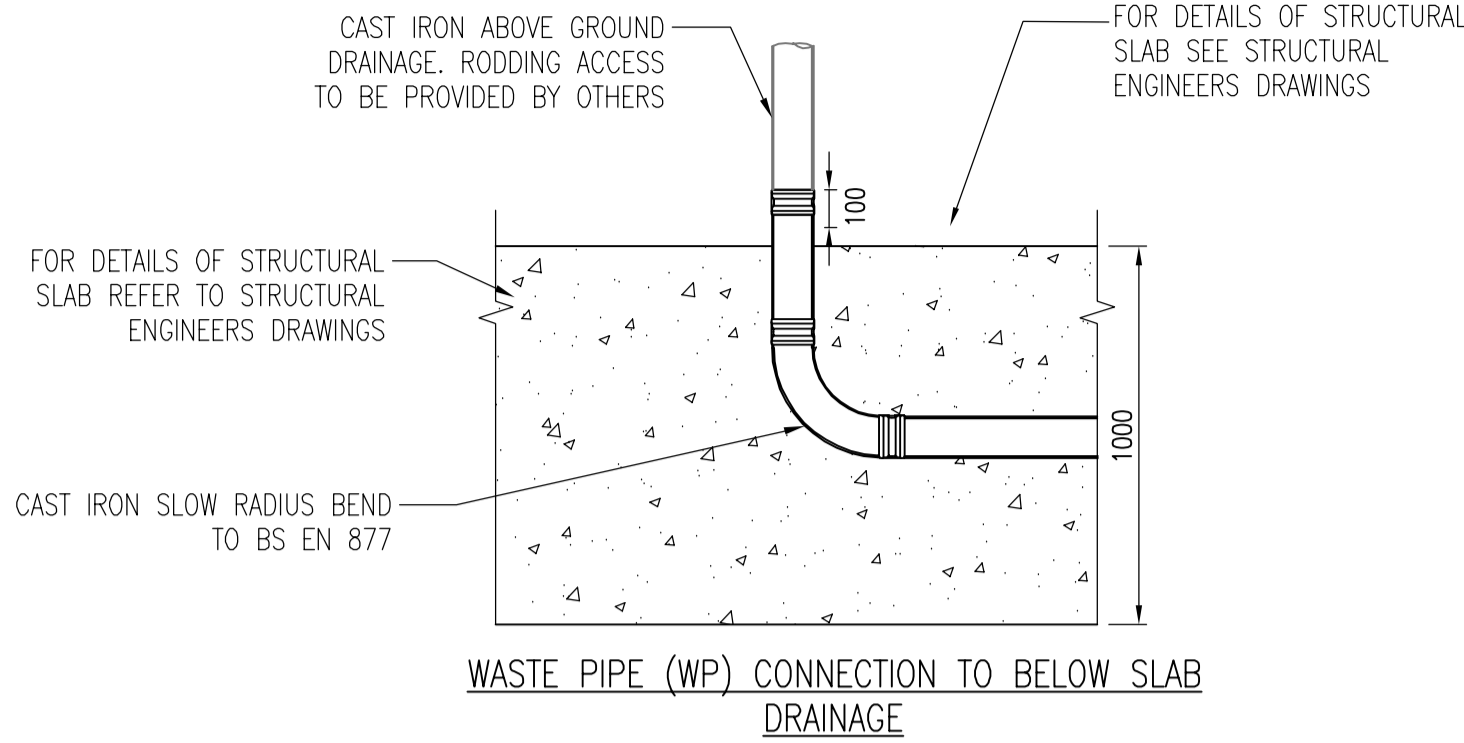
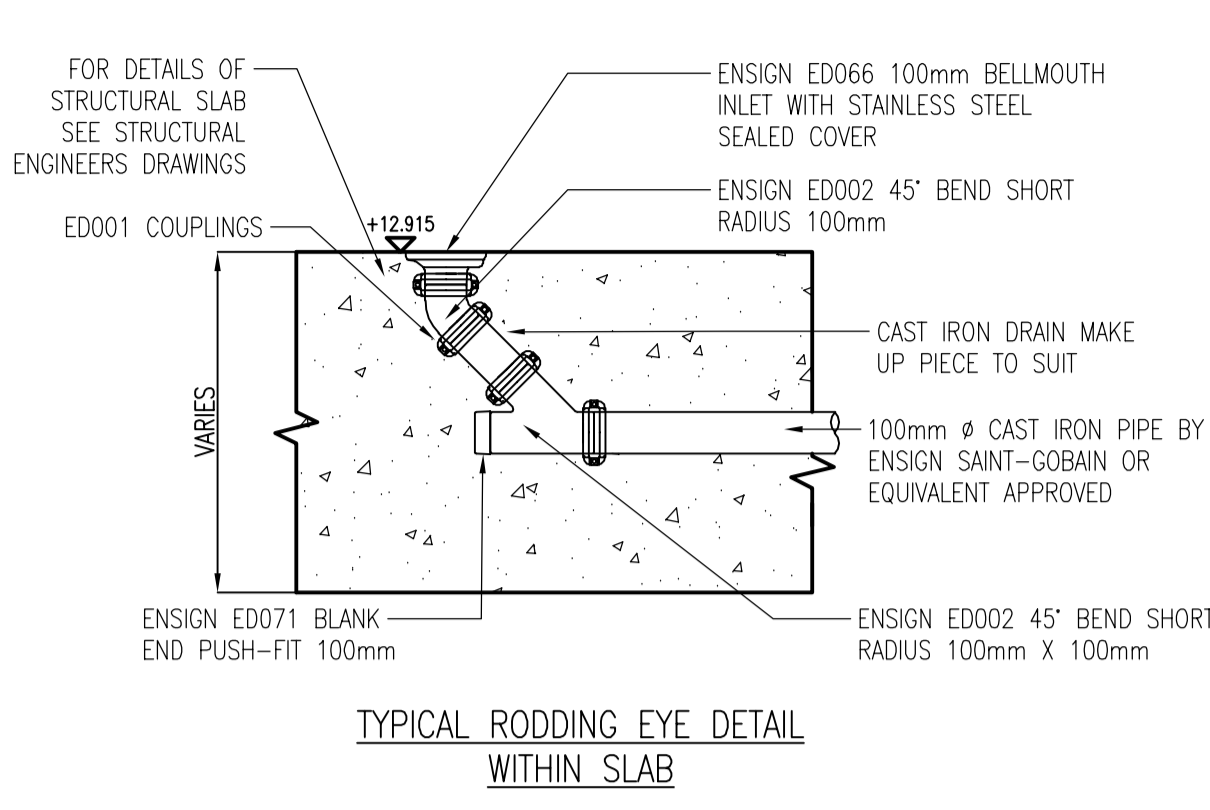
ARCHITECT: **STIFF + TREVILLION ARCHITECTS LTD**

PROJECT: **BRILL PLACE
NW1 1BP**

TITLE: **STANDARD DETAILS**

SCALE @ A1:	1:20	CHECKED:	LC	APPROVED:	LC
CAD FILE:	7370-WSP-00-B1-DT-D-520101	DESIGN-DRAWN:	RJ	DATE:	November 2019
PROJECT No:	70057370	DRAWING No:	7370-WSP-00-B1-DT-D-520101	REV:	P01

© WSP Group Ltd



\\UK.WSPGROUP.COM\CENTRAL DATA\PROJECTS\70057370 - BRILL PLACE\03 WIP\DRAWING\DRAWINGS\7370-WSP-00-B1-DT-D-520101.DWG 22/11/2019 15:42:38 Johnston, Rebecca