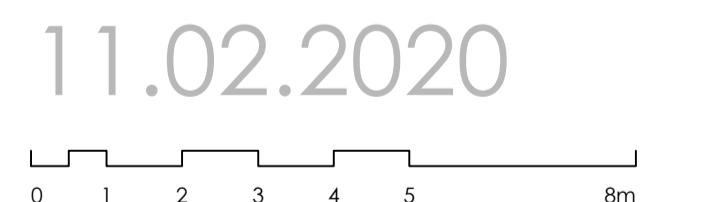
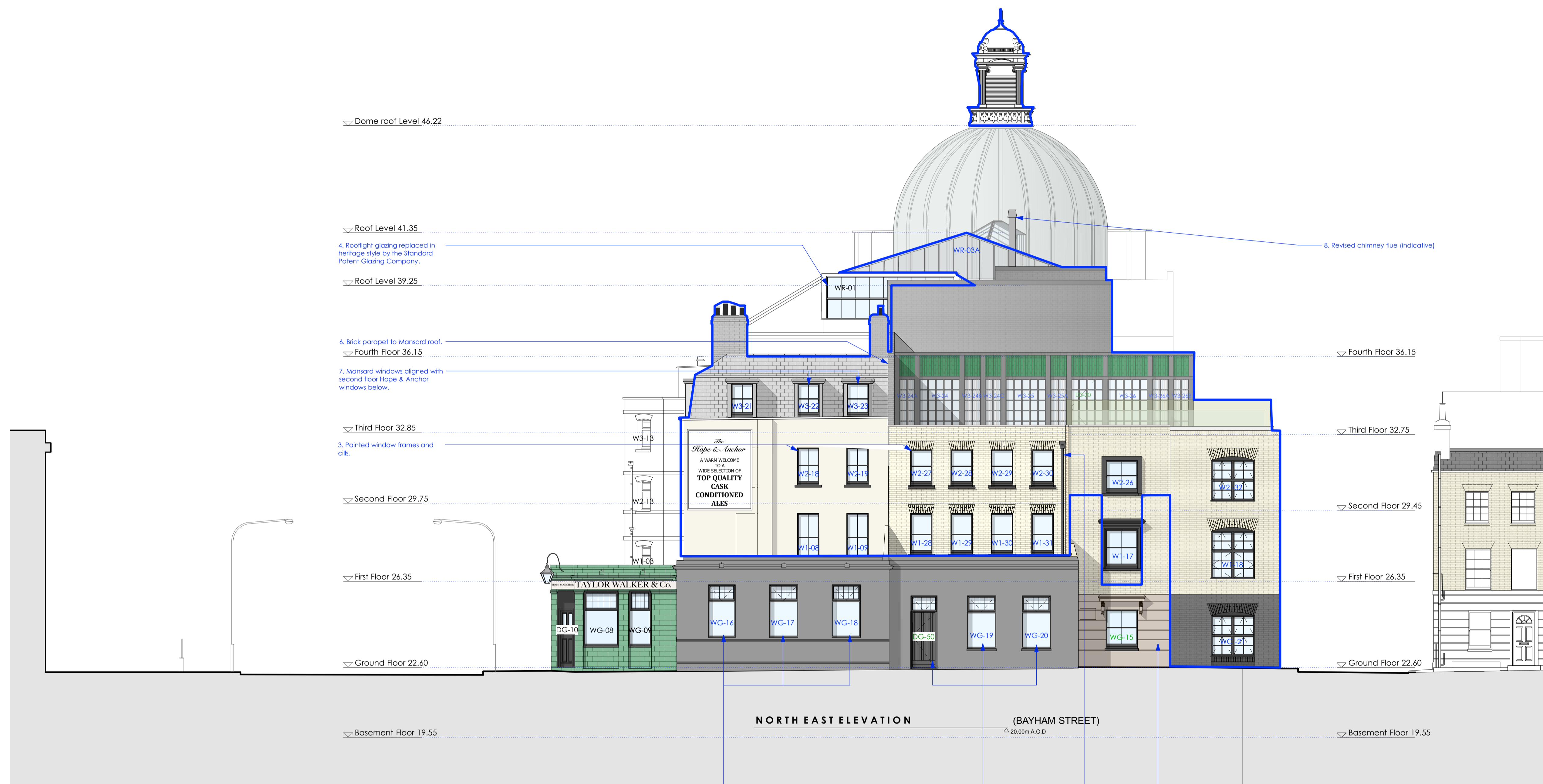


revision / date / amendments	
- /26/01/18 /	- Firt Issue
A / 02/03/18 /	- Window numbers added to match window schedule
	- GA notes updated
B / 02/05/18 /	- Window & door numbers Updated
C / 13/08/18 /	- 1.7. New Shash Windows to Facade
	- 2.3. New Shash Windows to Facade Windows altered from retained to new/ adaption of Timber sashes W1-17 & W2-26
	4.9. Wall depth increased to include void for services
	5.3. Existing chimney to rise above parapet
D / 15/08/18 /	5.4. Chimney added from Pavillion
	Colour Coding Added To Revised Drawing
E / 11/02/2020	Rev. C
	Retrospective planning application for changes to consented proposal. Refer to annotations.



PLANNING

Archer Humphryes Architects

Basement
Central House
142 Central Street
London, United Kingdom
EC1V 8AR
T: +44 (0) 20 7251 8555

project title		KOKO + Hope & Anchor + Bayham Place Camden, London	
drawing title	scale	date	
Proposed Bayham Street Elevation	1:100 @ A1	13.04.17	
drawing number	drawn	checked	
AHA/KKG/GA/202	FR/PC	DA	
	revision		
	E		