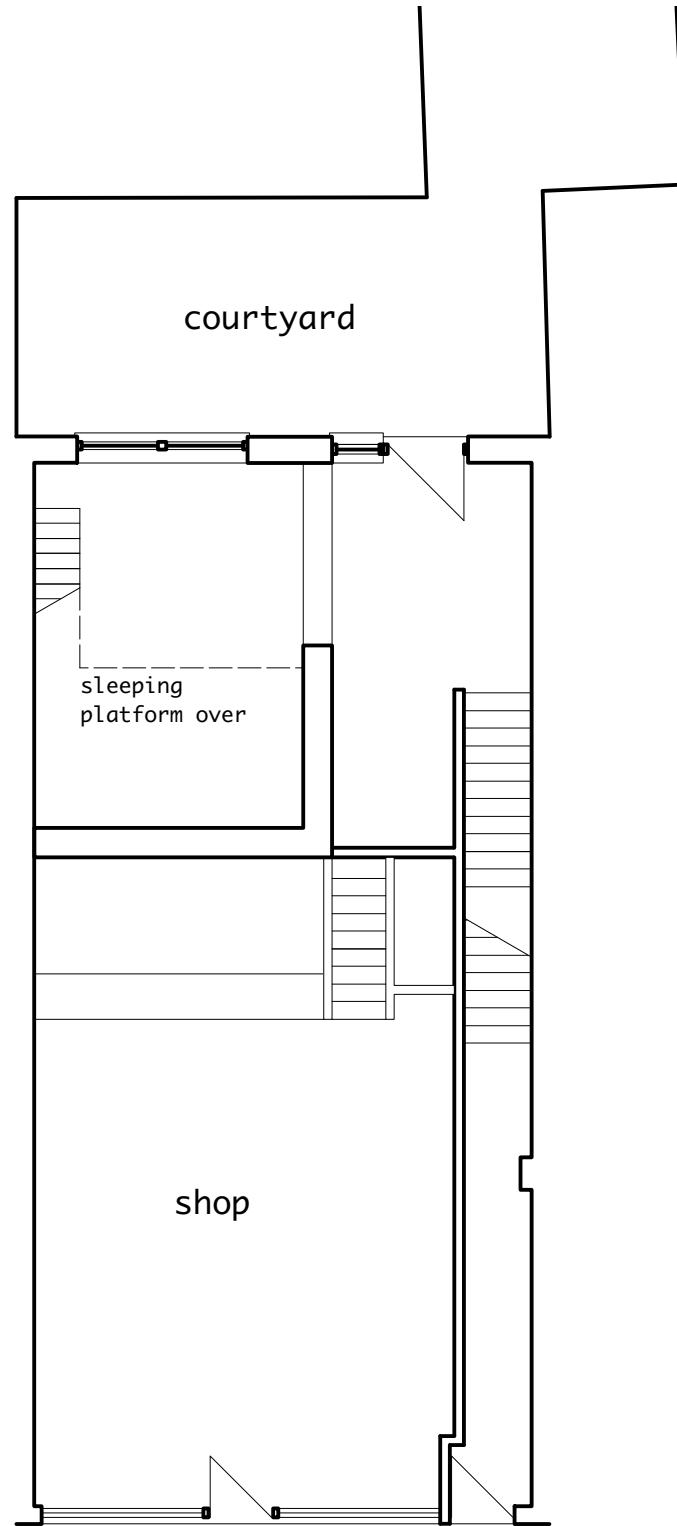


**BASEMENT**  
unchanged by proposals



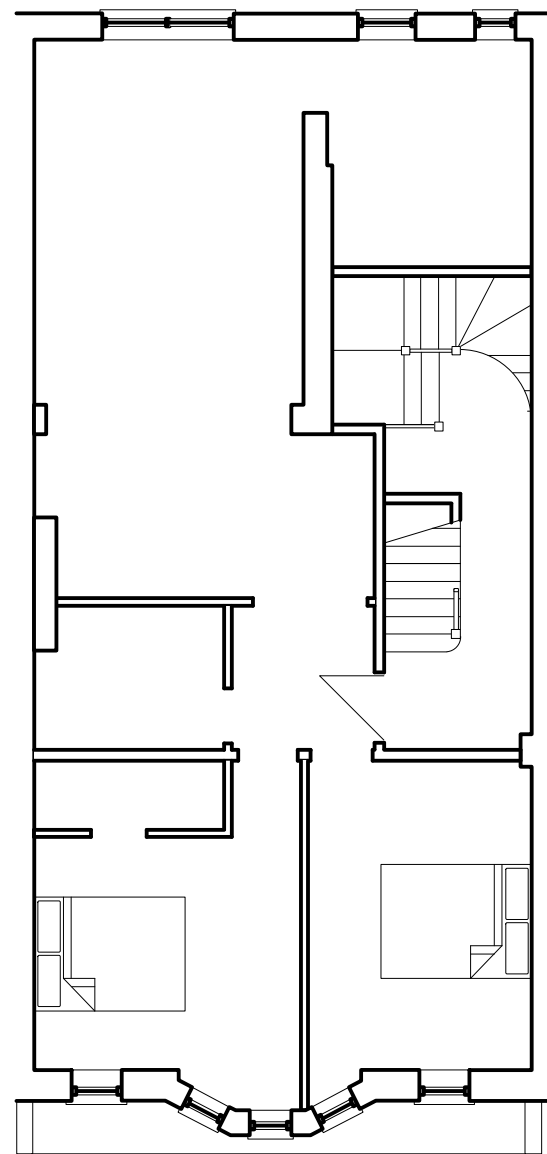
**GROUND**  
1b flat at rear

Tom Young Architects own copyright for this drawing		DISCIPLINE A = architectural S = structural M = mechanical E = electrical	
PROJECT TITLE	6 Fortess Rd	TOM YOUNG ARCHITECTS 19 Bassett St London NW5 4PG 020 7482 6150 tom@tomyoungarchitects.co.uk	
JOB NUMBER	1902	SERIES 1 site, roof, floor plans 2 elevations 3 sections 4 enlarged plans, elevations & sections 5 details 7 views 8 schedules	
SCALE	1:100	existing plans	
DATE	12/3/20	discipline	series
ISSUE	planning	A	01
CAD-FILE	1902-AD	sheet	05
		rev	

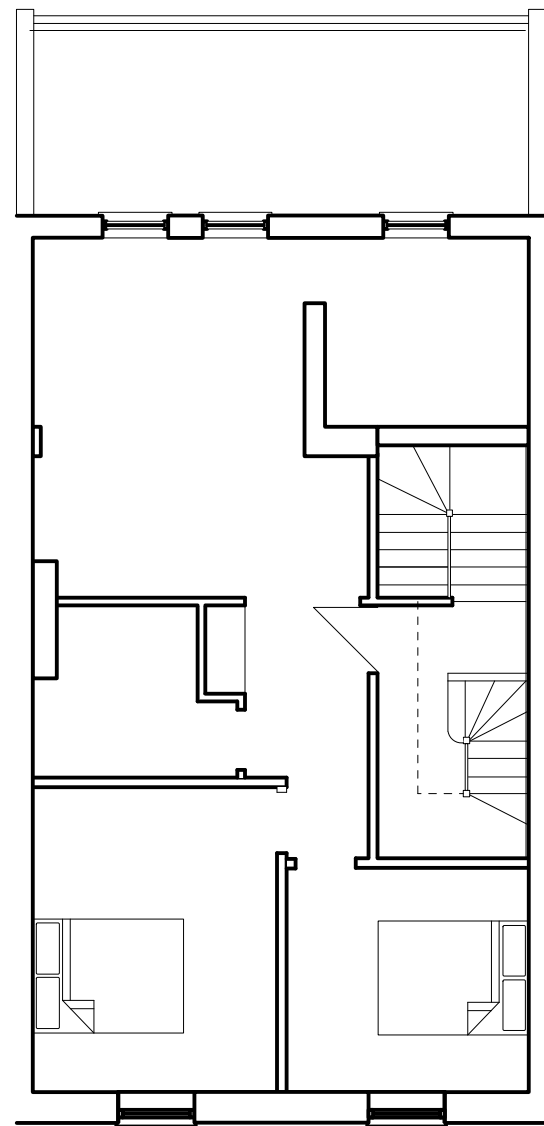


0 1 2 3 4 5 M

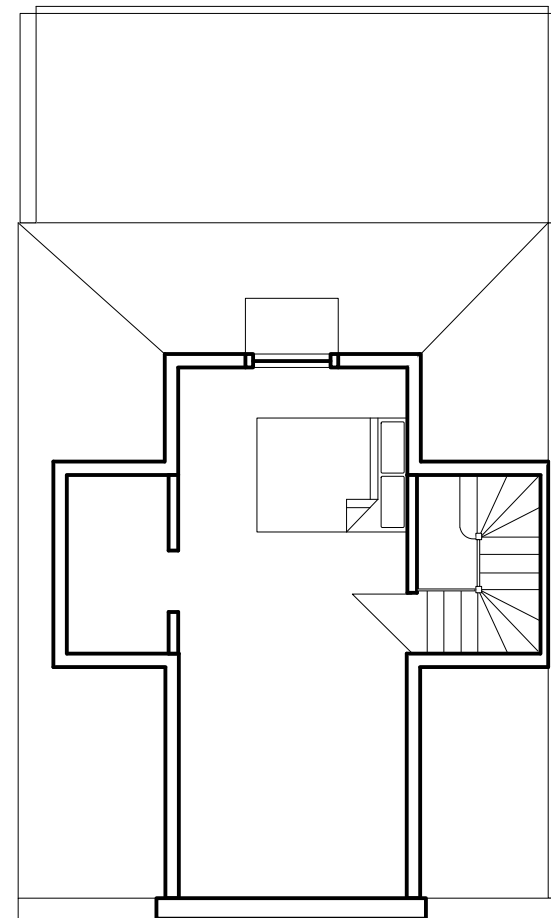
Tom Young Architects own copyright for this drawing		DISCIPLINE A = architectural S = structural M = mechanical E = electrical	<b>TOM YOUNG ARCHITECTS</b> 19 Bassett St London NW5 4PG 020 7482 6150 tom@tomyoungarchitects.co.uk		
PROJECT TITLE	6 Fortess Rd	SERIES 1 site, roof, floor plans 2 elevations 3 sections 4 enlarged plans, elevations & sections 5 details 7 views 8 schedules			
JOB NUMBER	1902	existing upper floor plans			
SCALE	1:100	discipline	series	sheet	rev
DATE	12/3/20	A	01	06	
ISSUE	Camden				
CAD-FILE	1902-AD				



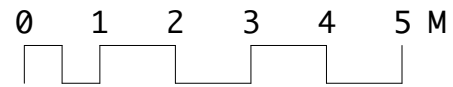
FIRST  
2b flat



SECOND  
3b duplex

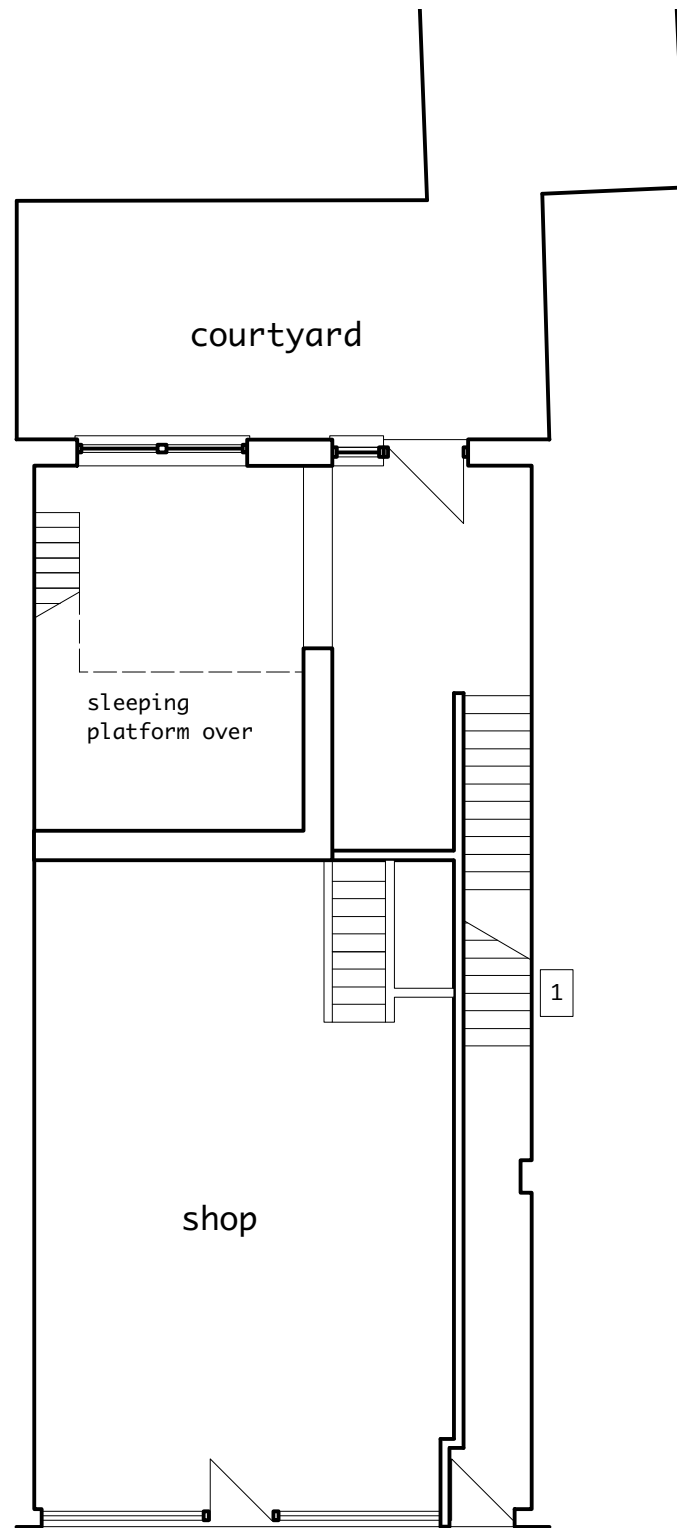


THIRD

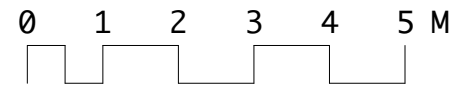


Tom Young Architects own copyright for this drawing		DISCIPLINE A = architectural S = structural M = mechanical E = electrical	
PROJECT TITLE	6 Fortess Rd	TOM YOUNG ARCHITECTS 19 Bassett St London NW5 4PG 020 7482 6150 tom@tomyoungarchitects.co.uk	
JOB NUMBER	1902	SERIES 1 site, roof, floor plans 2 elevations 3 sections 4 enlarged plans, elevations & sections 5 details 7 views 8 schedules	
SCALE	1:100	proposed upper plans	
DATE	12/3/20	discipline	series
ISSUE	Camden	A	01
CAD-FILE	1902-AD	sheet	10
		rev	

Notes  
1. new main stair



GROUND



### Notes

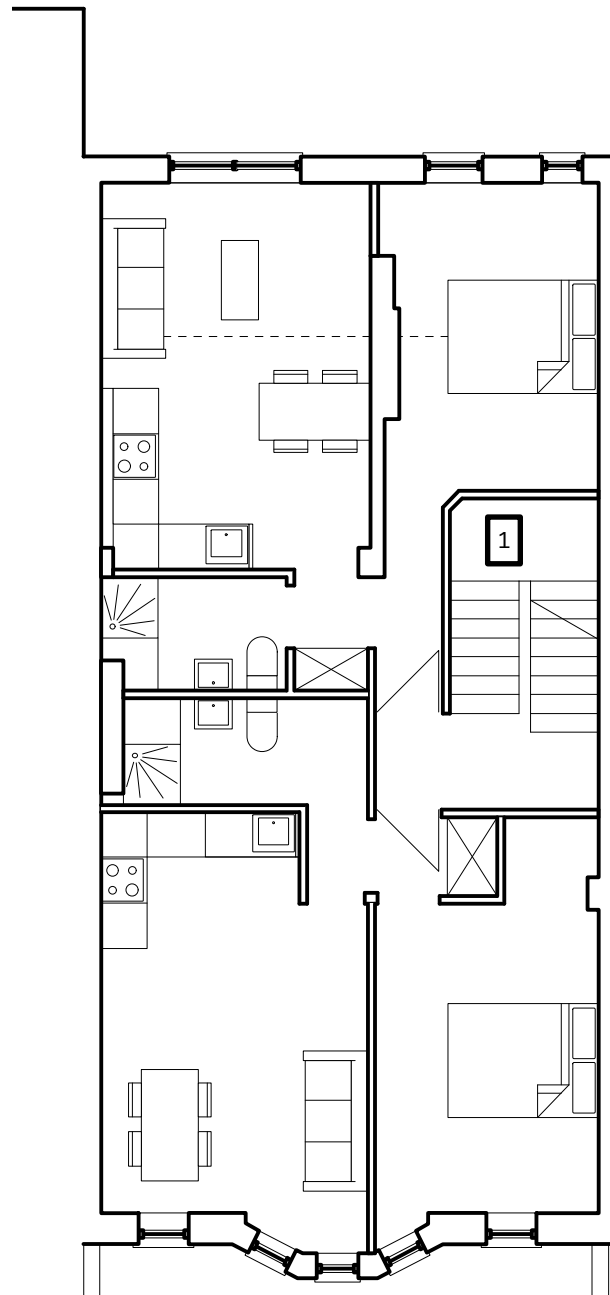
1. new main stair
2. rear extension brick to match existing
3. new flat roof solar reflective
4. new pc coping
5. new standing seam zinc cladding
6. new sw casement windows
7. new flat skylight

Tom Young Architects own copyright for this drawing		DISCIPLINE A = architectural S = structural M = mechanical E = electrical	
PROJECT TITLE	6 Fortess Rd	SERIES 1 site, roof, floor plans 2 elevations 3 sections 4 enlarged plans, elevations & sections 5 details 7 views 8 schedules	
JOB NUMBER	1902	proposed upper floor plans	
SCALE	1:100	discipline	series
DATE	12/3/20	A	01
ISSUE	Camden	sheet	11
CAD-FILE	1902-AD	rev	

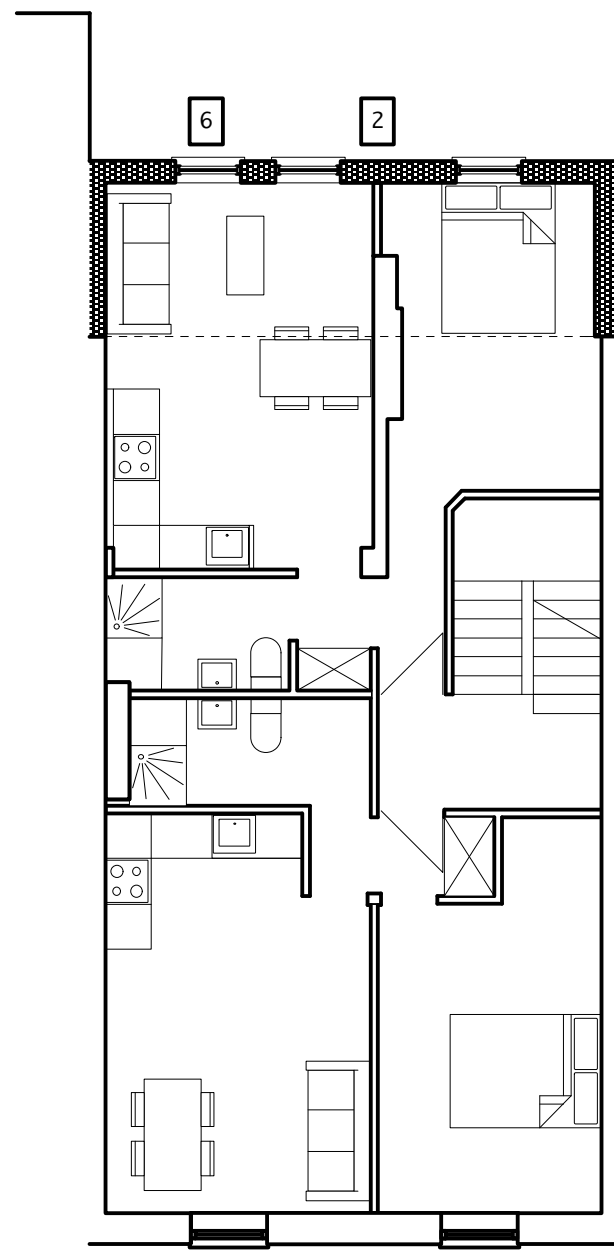
# TOM YOUNG ARCHITECTS

19 Bassett St  
London NW5 4PG  
020 7482 6150

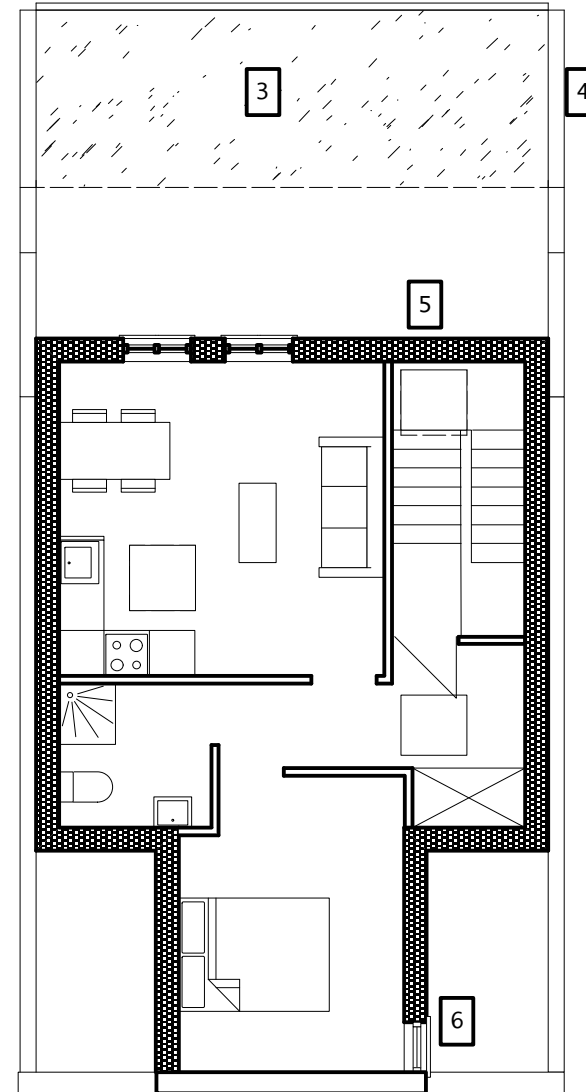
tom@tomyoungarchitects.co.uk



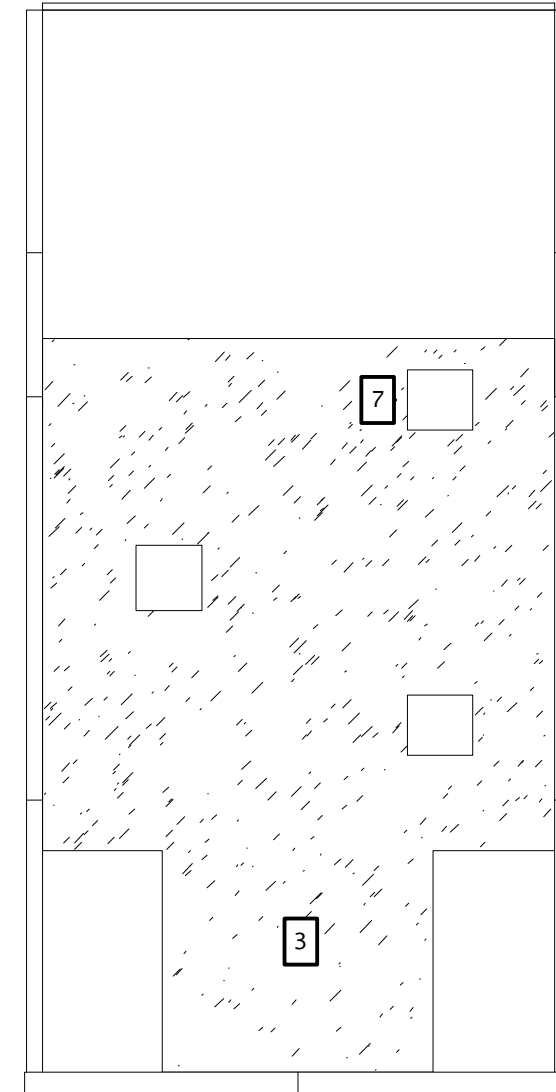
FIRST  
2x1b units @ 38sqm ea



SECOND  
2x1b units @ 38sqm ea



THIRD  
1x1b units @ 38sqm



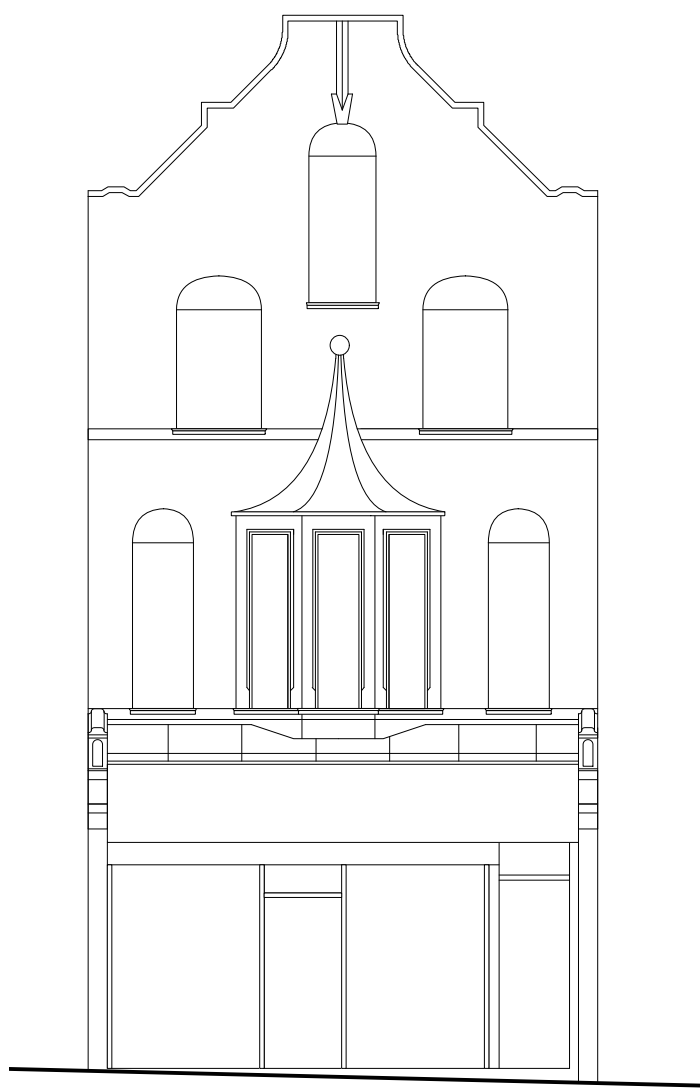
ROOF PLAN

0 1 2 3 4 5 M

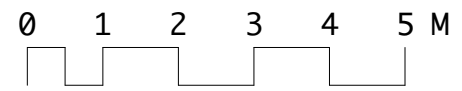
Tom Young Architects own copyright for this drawing		DISCIPLINE A = architectural S = structural M = mechanical E = electrical	<b>TOM YOUNG ARCHITECTS</b> 19 Bassett St London NW5 4PG 020 7482 6150 tom@tomyoungarchitects.co.uk		
PROJECT TITLE	6 Fortess Rd	SERIES 1 site, roof, floor plans 2 elevations 3 sections 4 enlarged plans, elevations & sections 5 details 7 views 8 schedules			
JOB NUMBER	1902	existing elevations			
SCALE	1:100	discipline	series	sheet	rev
DATE	12/3/20	A	02	05	
ISSUE	Camden				
CAD-FILE	1902-AD				



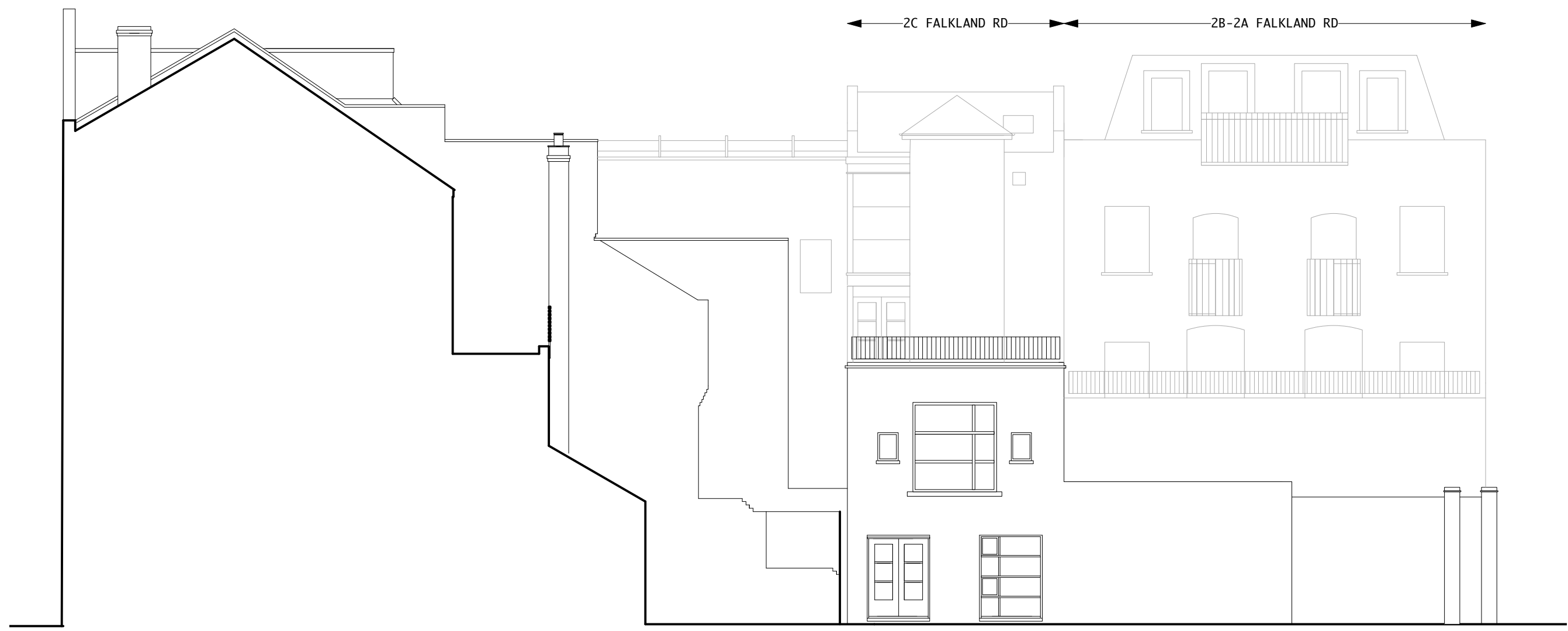
rear elevation  
6 Fortess Rd



street elevation  
6 Fortess Rd  
no change



Tom Young Architects own copyright for this drawing		DISCIPLINE A = architectural S = structural M = mechanical E = electrical	<b>TOM YOUNG ARCHITECTS</b> 19 Bassett St London NW5 4PG 020 7482 6150 tom@tomyoungarchitects.co.uk			
PROJECT TITLE	6 Fortess Rd					
JOB NUMBER	1902	SERIES 1 site, roof, floor plans 2 elevations 3 sections 4 enlarged plans, elevations & sections 5 details 7 views 8 schedules	existing side elevation looking north			
SCALE	1:100		discipline	series	sheet	rev
DATE	12/3/20		A	02	06	
ISSUE	Camden					
CAD-FILE	1902-AD					

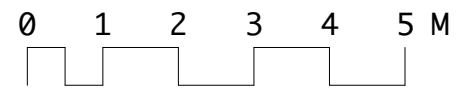


0 1 2 3 4 5 M

Tom Young Architects own copyright for this drawing		DISCIPLINE A = architectural S = structural M = mechanical E = electrical	
PROJECT TITLE	6 Fortess Rd	TOM YOUNG ARCHITECTS 19 Bassett St London NW5 4PG 020 7482 6150 tom@tomyoungarchitects.co.uk	
JOB NUMBER	1902	SERIES 1 site, roof, floor plans 2 elevations 3 sections 4 enlarged plans, elevations & sections 5 details 7 views 8 schedules	
SCALE	1:100	proposed rear elevation	
DATE	12/3/20	discipline	series
ISSUE	Camden	A	01
CAD-FILE	1902-AD	sheet	10
		rev	



rear elevation  
6 Fortess Rd



Tom Young Architects own copyright for this drawing

PROJECT TITLE	6 Fortess Rd
JOB NUMBER	1902
SCALE	1:100
DATE	12/3/20
ISSUE	Camden
CAD-FILE	1902-AD

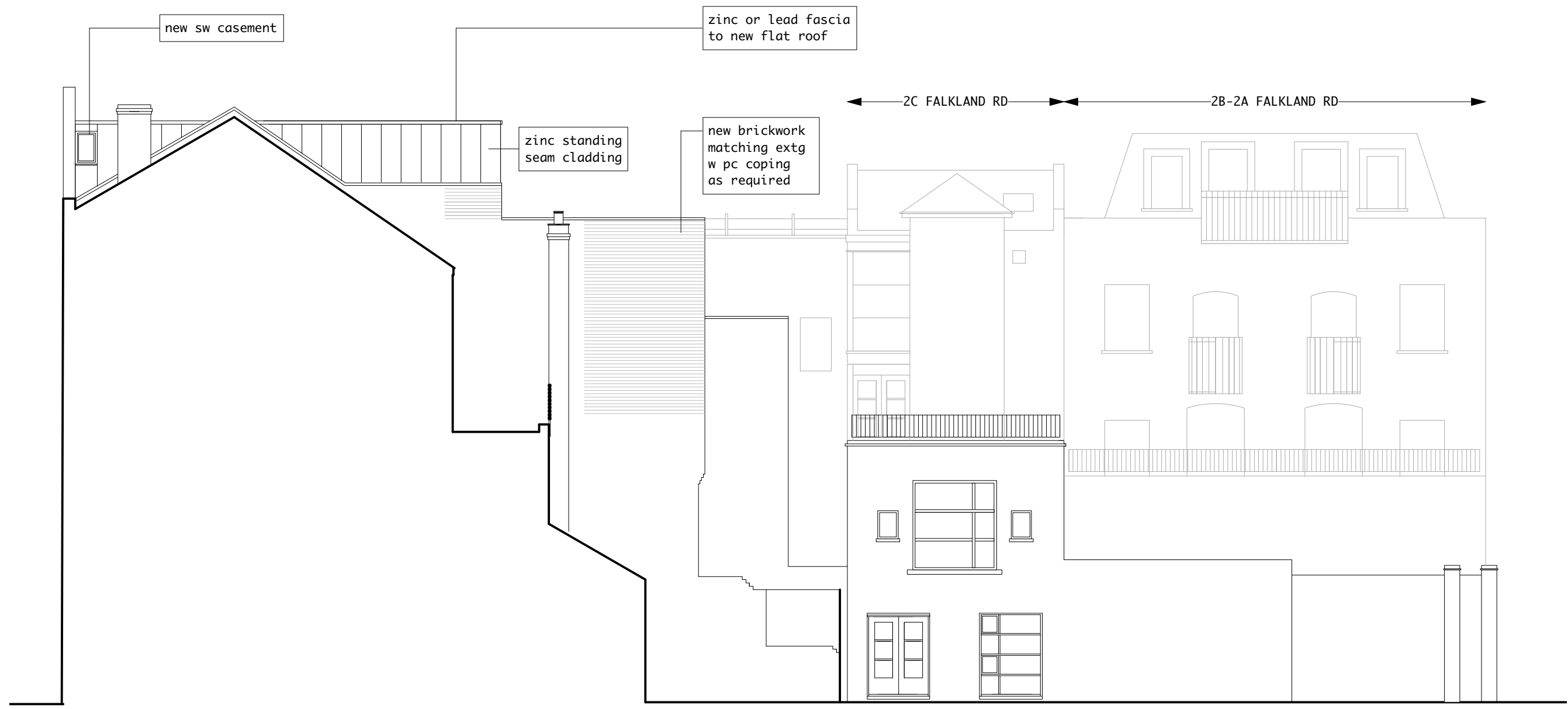
DISCIPLINE  
 A = architectural  
 S = structural  
 M = mechanical  
 E = electrical

SERIES  
 1 site, roof, floor plans  
 2 elevations  
 3 sections  
 4 enlarged plans, elevations & sections  
 5 details  
 7 views  
 8 schedules

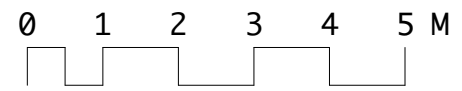
**TOM YOUNG ARCHITECTS**  
 19 Bassett St  
 London NW5 4PG  
 020 7482 6150  
 tom@tomyoungarchitects.co.uk

proposed side elevation looking north

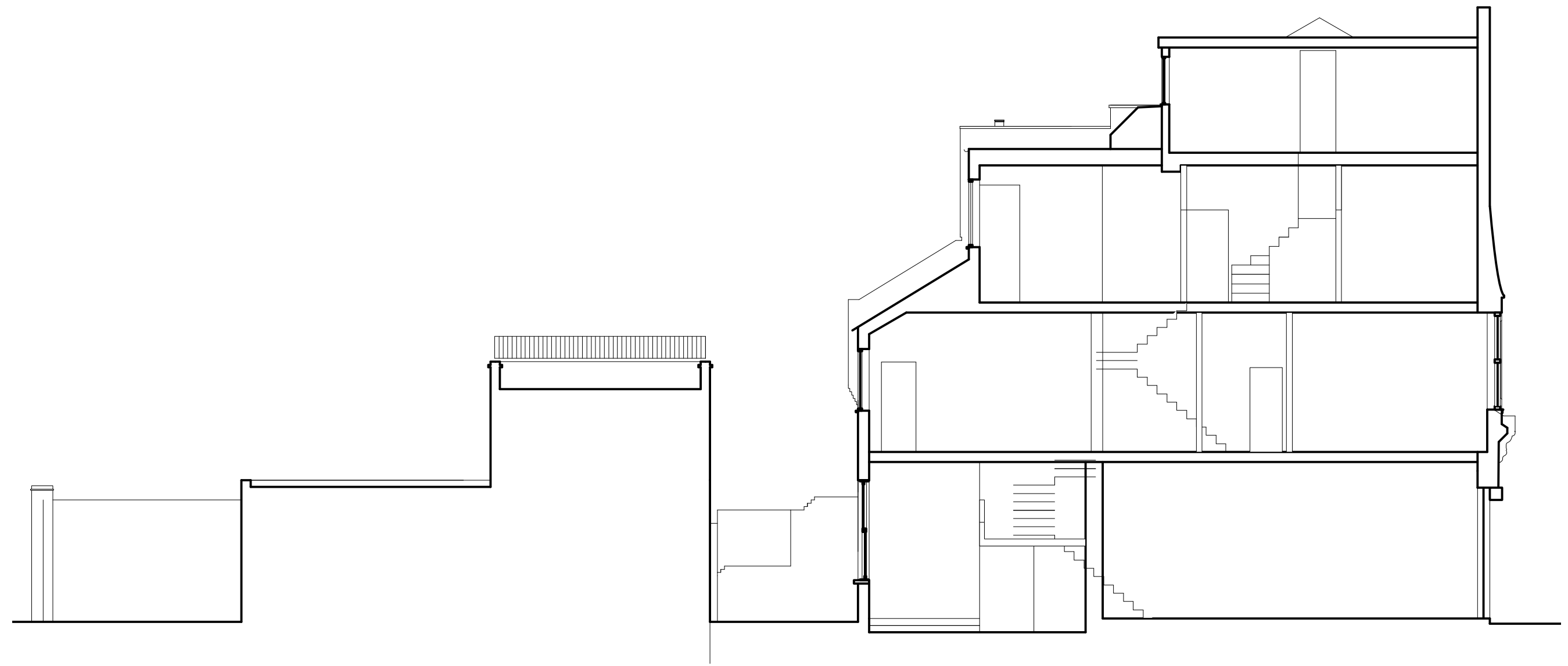
discipline	series	sheet	rev
A	02	11	

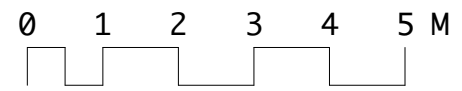






Tom Young Architects own copyright for this drawing		DISCIPLINE A = architectural S = structural M = mechanical E = electrical	
PROJECT TITLE	6 Fortess Rd	TOM YOUNG ARCHITECTS 19 Bassett St London NW5 4PG 020 7482 6150 tom@tomyoungarchitects.co.uk	
JOB NUMBER	1902	existing section looking south	
SCALE	1:100	discipline	series
DATE	12/3/20	A	03
ISSUE	Camden	sheet	05
CAD-FILE	1902-AD	rev	





Tom Young Architects own copyright for this drawing		DISCIPLINE A = architectural S = structural M = mechanical E = electrical	
PROJECT TITLE	6 Fortess Rd	SERIES 1 site, roof, floor plans 2 elevations 3 sections 4 enlarged plans, elevations & sections 5 details 7 views 8 schedules	
JOB NUMBER	1902		
SCALE	1:100		
DATE	12/3/20		
ISSUE	Camden		
CAD-FILE	1902-AD		

**TOM YOUNG ARCHITECTS**  
19 Bassett St  
London NW5 4PG  
020 7482 6150  
tom@tomyoungarchitects.co.uk

proposed section looking south

discipline	series	sheet	rev
A	03	10	

