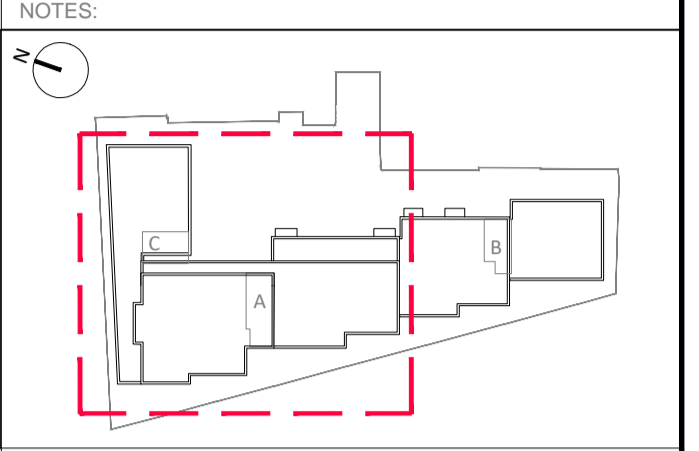


- Columns with 12.5mm dabs and 15mm Knaf Sound Shield board finish.
- Internal 225 concrete wall to cores with 12.5mm dabs and 12.5mm Sound Shield board finish.
- 225mm Shear wall to Struct. Eng's design Finished 50mm insulated board to resi. side of wall and 12.5mm dabs and 12.5mm Sound Shield board finish. Provides thermal and acoustic separation to unheated communal space.
- Internal 100mm stud wall - (riser cupboards). As below but with 70mm Knaf C Studs
- Internal 75mm stud wall, 10kg/m<sup>2</sup>, 12.5mm Knaf Sound panel tapered edge or similar, 50mm Knaf C stud at max. 600mm Ctrs, (450 in Kitchens)
- Partition filled snug with Crown Partition roll (10kg/m<sup>2</sup>) or similar approved.
- 102mm External brickwork skin
- Internal 300 block wall with 28mm finish to one side. 9.5mm Plasterboard on dabs on 8mm scratch coat render (1:1/2:4) on 2 skins of 100mm Lignacite 10.5N/mm<sup>2</sup> Blockwork, 100 mm Knaf Dritherm 32 to cavity.
- 140/ 215mm (215 where indicated) block wall construction, 7.3N/sq.mm in mortar M4 strength
- 215
- Internal 300 party wall (between flats and to corridors). Consists both sides 2 layers 15mm Knaf Sound Shield Plus on vapour barrier on 70mm Twin frame "I" Studs @ 600mm Ctrs. 100mm Isover Min. Wool Ins. central and 70mm between studs.
- External Brickwork Walls, Partially Insulated Cavity with 12mm CP Sheathing on 100mm Metsec frame with 50mm Min. Kingspan Ins. Vapour control layer and 2x12.5mm Plasterboard finish internally.
- Masonry Support Angle at Slab Level
- Masonry Support Angle at High Level
- Dry riser inlet at GF
- Dry riser outlet
- SVP/AAV
- SS
- G
- RWO
- EXT
- SUP
- IP
- Fire Stop
- Window/Door reference/Acoustic/Ventilation Lintel reference & length
- WT
- Balcony / Terrace reference
- U VALUES TO BE ACHIEVED:
- WP1
- WP2

# CONTRACT DOCUMENT

This drawing and any related notes are protected by copyright. To the extent that this is a design document it is, in addition, protected by design right. All rights in them are reserved. They are provided for your information only. No part of them or any design to which they relate may be reproduced in any form or by any means without the prior written permission of Fairview New Homes Limited, except as expressly permitted by law. The design of any unauthorised use in relation to them may result in both a civil claim and criminal prosecution.



Route for wiring and condensing pipework. Note: Route for WS 04 to pass through WS03

Location for Condenser units to be ground supported and fixed back to masonry wall

EXTERNAL WALLS	-0.18 W/m <sup>2</sup> K
GROUND FLOORS/ PODIUM	-0.20 W/m <sup>2</sup> K
CEILING SOFFITS UNHEATED SPACES	-0.20W/m <sup>2</sup> K
ROOFS	-0.16W/m <sup>2</sup> K
WINDOWS/ BALCONY DOORS	-1.3 W/m <sup>2</sup> K
EXTERNAL DOORS	-1.8 W/m <sup>2</sup> K

A First Issue

REV	AMENDMENTS	BY	DATE

ehw  
architects + designers

EHW Hitchin  
Keynes House, Tilehouse Street  
Hitchin, Herts SG5 2DW  
EHW London  
10 Margaret Street, London  
W1W 8RL  
T 01462 455257  
E info@ehwarchitects.com  
V ehwarchitects.com  
ISO 9001:2008 Registered

For and on behalf of:  
**Fairview**  
NEW HOMES Ltd.

Technical Department,  
50 Lancaster Road, Enfield,  
Middlesex EN2 0BY  
Tel: 020-8366-1271  
Fax: 020-8342-5861  
E-mail: technical@fhiltl.co.uk

Drawn:	FS	Date:	Scale:
Checked:	NER	Approved:	1:100
Title:			Architectural

**Air conditioning plan WS 03&04**

Project: Centric Close, Camden

Drawing Number:	FNH425-A.12.1.09	Rev:	A
dwg:			