

PLANT SCHEDULE | UPPER AND LOWER GROUND FLOOR

Trees						
Number	Species	Form	Overall Height	Clear Stem	Root Protection	Density
4 No.	Cornus kousa	Multi stem (min 3-5 stems)	300-350 cm	150-175cm	RB	Counted

Shrubs					
Number	Species	Form	Overall Height	Root Protection	Density
7 No.	Hamamelis x intermedia 'Pallida'	Branched 5 brks	150-175 cm	C	Counted
6 No.	Magnolia sieboldii var. sinensis	Branched 5 brks	150-175 cm	C	Counted

Clipped Hedge				
Number	Species	Overall Height	Root Protection	Density
12 No.	Taxus baccata	80-100 cm	C	2/m ²
61 No.	Taxus baccata	40-60 cm	C	2/m ²

Herbaceous				
Number	Species	Pot Size	Density	
289 No.	Astrantia 'Shaggy'	2L	9/m ²	
341 No.	Epimedium x youngianum 'Niveum'	2L	9/m ²	
84 No.	Geranium Rozanne	2L	9/m ²	
74 No.	Tellima grandiflora	2L	9/m ²	
121 No.	Brunnera macrophylla 'Jack Frost'	2L	9/m ²	
154 No.	Geranium renardii	2L	9/m ²	
50 No.	Asarum europaeum	2L	9/m ²	
65 No.	Helleborus niger	2L	9/m ²	

Climbers					
Number	Species	Height	Pot Size	Specification	Density
24 No.	Clematis armandii 'Snowdrift'	80-100cm	10L	Several Shoots :3/4 brks :Caned	Counted

Ferns				
Number	Species	Pot Size	Density	
90 No.	Polystichum aculeatum	2L	9/m ²	
158 No.	Blechnum spicant	2L	9/m ²	
169 No.	Dryopteris wallichiana	2L	9/m ²	
238 No.	Asplenium scolopendrium	2L	9/m ²	
63 No.	Dryopteris filix-mas	2L	9/m ²	

Grasses				
Number	Species	Pot Size	Density	
868 No.	Hakonechloa macra	2L	9/m ²	
586 No.	Deschampsia cespitosa	2L	9/m ²	
190 No.	Liriope muscari 'Monroe White'	2L	9/m ²	

DESIGN INTENT: GRASSES TO BE PLANTED IN GROUPS OF MIN. 3, 5 AND MAX.7.
 SPECIES TO BE RANDOMLY PLACED, AVOIDING STRAIGHT LINES.
 RANDOM DRIFTS OF 3-7 PLANTS NOT TO BE PLANTED PARALLEL WITH NEIGHBOURING DRIFTS OF THE SAME SPECIES.

PLANT SCHEDULE | ROOF TERRACES

Clipped Hedge				
Number	Species	Overall Height	Root Protection	Density
383 No.	Taxus baccata	40-60 cm	C	2/m ²

LEGEND

1. This drawing is to be read in conjunction with all other drawings and specifications.
2. Do not scale off this drawing. Written dimensions to be taken only.
3. Any discrepancies found between this drawing and other drawings and specifications in the construction documents must be referred to the Landscape Architect prior to work commencing.
4. This drawing must not be copied in whole or in part without written consent of LDA design.
5. These drawings are for finishes only. All foundation, fixing, paving depths and drainage details to be provided by others.
6. All dimensions in mm unless otherwise stated.
7. Where dimension sizes of units are given they state length x width x depth.

NOTES:

REFER TO GENERAL ARRANGEMENT LAYOUT AND REFERENCE PLANS DWG 5657_100 - 104

REFER TO HARDWORKS LAYOUT AND REFERENCE PLAN DWG 5657_200

REFER TO FURNITURE LAYOUT AND REFERENCE PLAN DWG 5657_300

REFER TO SOFTWARE LAYOUT AND REFERENCE PLAN DWG 5657_400

TO BE READ IN CONJUNCTION WITH LANDSCAPE ARCHITECT'S EXTERNAL WORKS SPECIFICATION.

TO BE READ IN CONJUNCTION WITH ARCHITECT'S GA DRAWINGS 0010 SERIES

CONTRACTOR TO ENSURE THAT ALL PLANTING AREAS ARE FREE DRAINING

READ THIS FIRST

- Note for Contractors**
 This drawing should be considered along with the risk information contained in the CDM Pre Construction Information. This information will include details of the SIGNIFICANT risks which LDA Design has identified which may arise from constructing their designs shown on this drawing. A Competent Contractor should be aware of the typical risks associated with doing this work.
- Note for Workers**
 DO NOT START YOUR WORK unless you know the Risks and Controls relating to the work on this drawing (including SAFE SEQUENCES OF WORK and EQUIPMENT).
- Do not issue copies of parts of this drawing without the above Note for Workers (unless you are sure that the Workers can undertake the work safely).

D	Plant species changes following comments from London Wildlife Trust Update to planting area around building column Coordination with building entrance Clipped hedgerow added to roof terraces	AW	28/02/20
C	Coordination with slab penetrations	AW	18/10/19
B	Coordination with architecture	AW	10/06/19
A	Construction issue	AW	21/01/19
REV.	DESCRIPTION	APP.	DATE

LDA DESIGN

PROJECT TITLE
 101 Camley Street

DRAWING TITLE
 Stage 5: Construction
 Plant Schedule

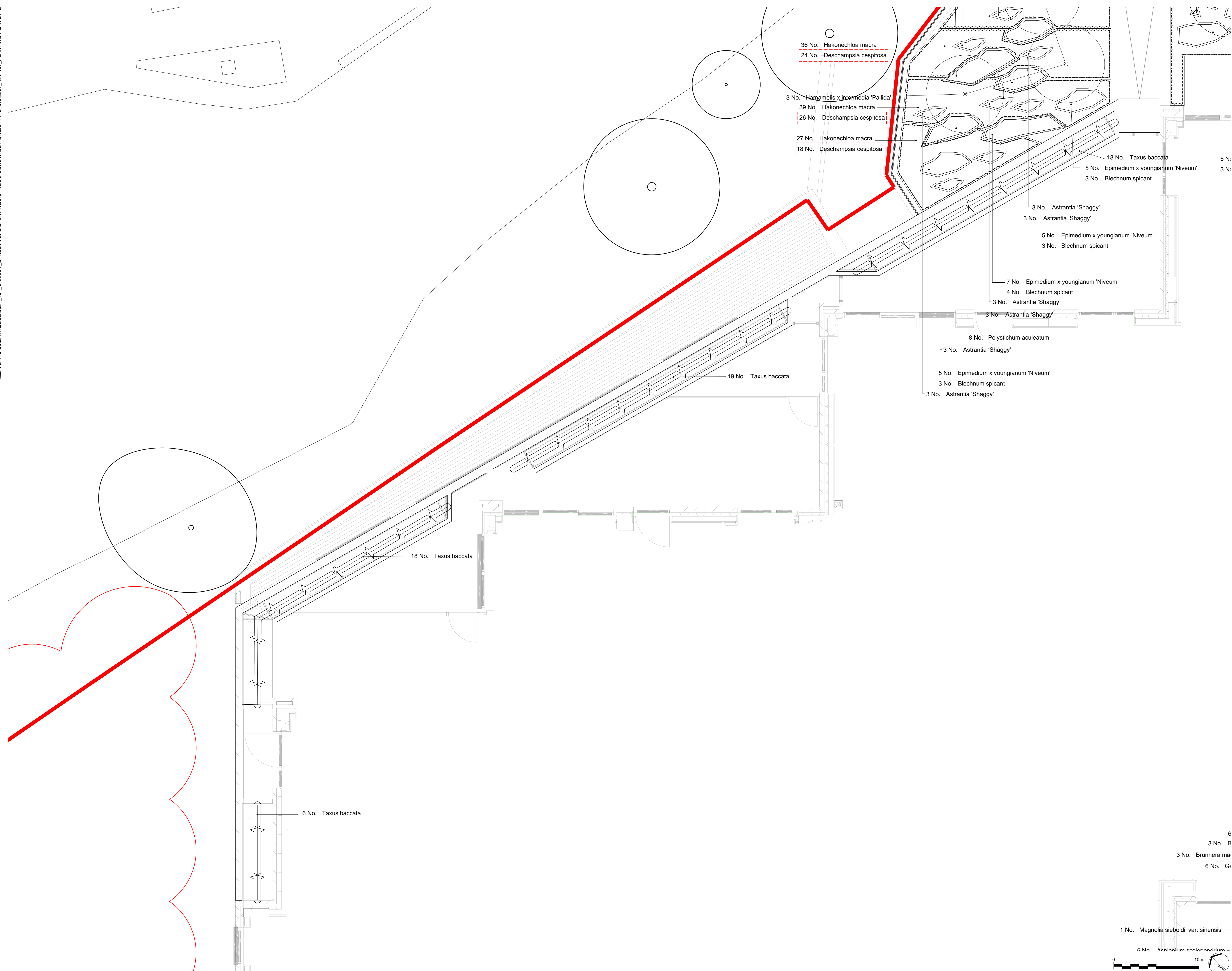
ISSUED BY	Exeter	T: 01392 260 430
DATE	Jan 2019	DRAWN MC
SCALE: A1	1:200	CHECKED AW
STATUS	Construction	APPROVED RA

DWG. NO 5657_408

No dimensions are to be scaled from this drawing.
 All dimensions are to be checked on site.
 Area measurements for indicative purposes only.

© LDA Design Consulting Ltd. Quality Assured to BS EN ISO 9001 : 2008
 Sources Ordnance Survey





LEGEND

1. This drawing is to be read in conjunction with all other drawings and specifications.
2. Do not scale off this drawing. Written dimensions to be taken only.
3. Any discrepancies found between this drawing and other drawings and specifications in the construction documents must be referred to the Landscape Architect prior to work commencing.
4. This drawing must not be copied in whole or in part without written consent of LDA design.
5. These drawings are for finishes only. All foundation, fixing, paving depths and drainage details to be provided by others.
6. All dimensions in mm unless otherwise stated.
7. Where dimension sizes of units are given they state length x width x depth.

NOTES:

REFER TO GENERAL ARRANGEMENT LAYOUT AND REFERENCE PLANS DWG 5657_100 - 104

REFER TO HARDWORKS LAYOUT AND REFERENCE PLAN DWG 5657_200

REFER TO FURNITURE LAYOUT AND REFERENCE PLAN DWG 5657_300

REFER TO SOFTWORKS LAYOUT AND REFERENCE PLAN DWG 5657_400

TO BE READ IN-CONJUNCTION WITH LANDSCAPE ARCHITECT'S EXTERNAL WORKS SPECIFICATION.

TO BE READ IN CONJUNCTION WITH ARCHITECT'S GA DRAWINGS 0010 SERIES

LEGEND

— SITE BOUNDARY

○ PROPOSED TREES

READ THIS FIRST

Note for Contractors
 This drawing should be considered along with the risk information contained in the CDM Pre Construction Information. This information will include details of the SIGNIFICANT risks which LDA Design has identified which may arise from constructing their designs shown on this drawing. A Competent Contractor should be aware of the typical risks associated with doing this work.

Note for Workers
 DO NOT START YOUR WORK unless you know the Risks and Controls relating to the work on this drawing (including SAFE SEQUENCES OF WORK and EQUIPMENT).

Do not issue copies of parts of this drawing without the above Note for Workers (unless you are sure that the Workers can undertake the work safely).

REV.	DESCRIPTION	APP.	DATE
C	Plant species changes following comments from London Wildlife Trust	AW	28/02/20
B	Coordination with architecture	AW	10/06/19
A	Construction issue	AW	21/01/19

LDA DESIGN

PROJECT TITLE
 101 Camley Street

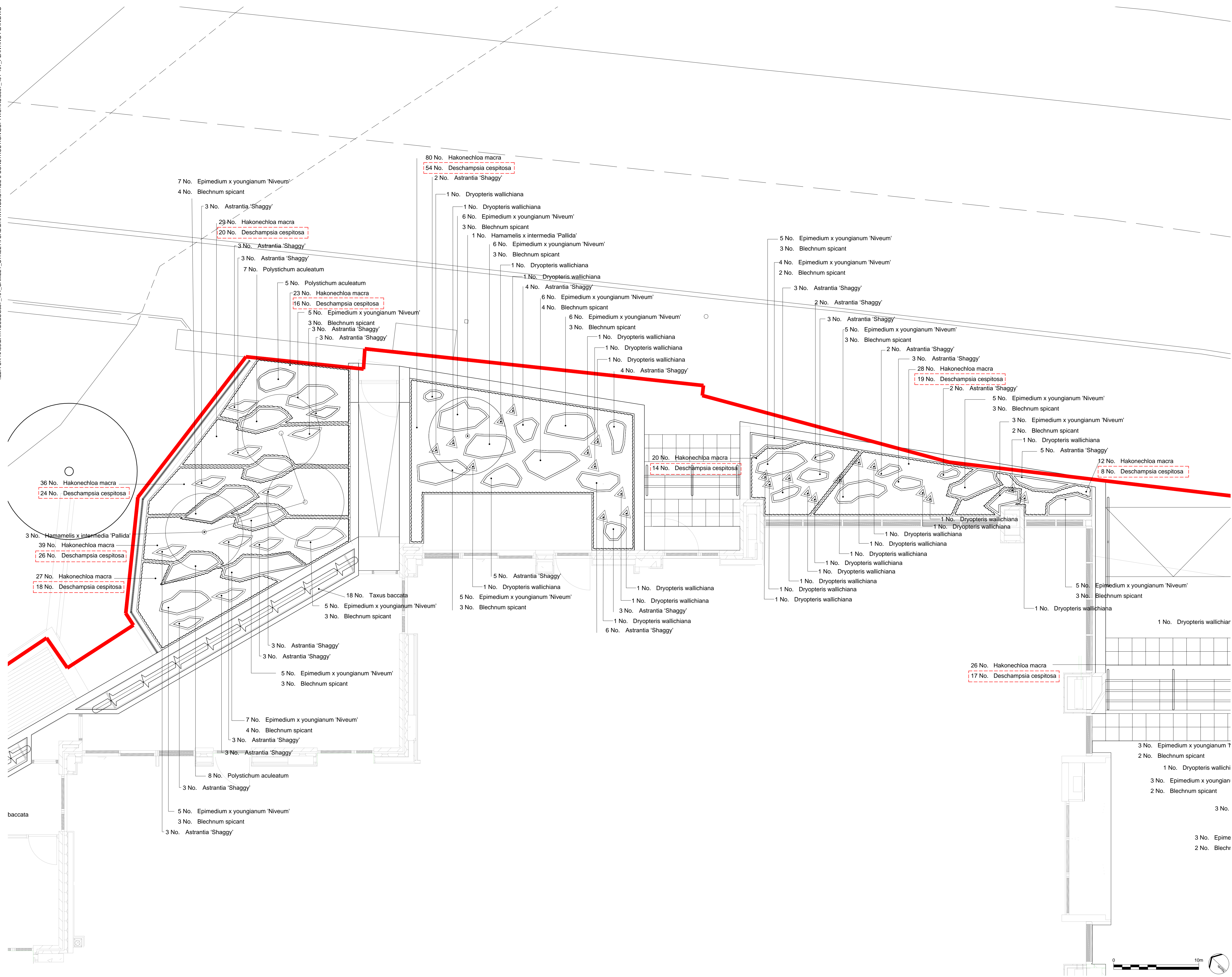
DRAWING TITLE
 Stage 5: Construction
 Planting Plan
 Sheet 01

ISSUED BY: Exeter T: 01392 260 430
 DATE: Jan 2019 DRAWN: MC
 SCALE: 1:200 CHECKED: AW
 STATUS: Construction APPROVED: RAS

DWG. NO 5657_401

No dimensions are to be scaled from this drawing. All dimensions are to be checked on site. Area measurements for indicative purposes only.

© LDA Design Consulting Ltd. Quality Assured to BS EN ISO 9001 : 2008
 Sources: Ordnance Survey



LEGEND

1. This drawing is to be read in conjunction with all other drawings and specifications.
2. Do not scale off this drawing. Written dimensions to be taken only.
3. Any discrepancies found between this drawing and other drawings and specifications in the construction documents must be referred to the Landscape Architect prior to work commencing.
4. This drawing must not be copied in whole or in part without written consent of LDA design.
5. These drawings are for finishes only. All foundation, fixing, paving depths and drainage details to be provided by others.
6. All dimensions in mm unless otherwise stated.
7. Where dimension sizes of units are given they state length x width x depth.

NOTES:

REFER TO GENERAL ARRANGEMENT LAYOUT AND REFERENCE PLANS DWG 5657_100 - 104

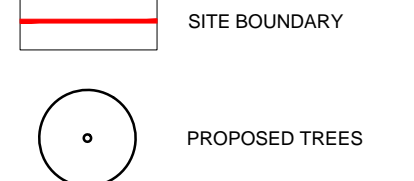
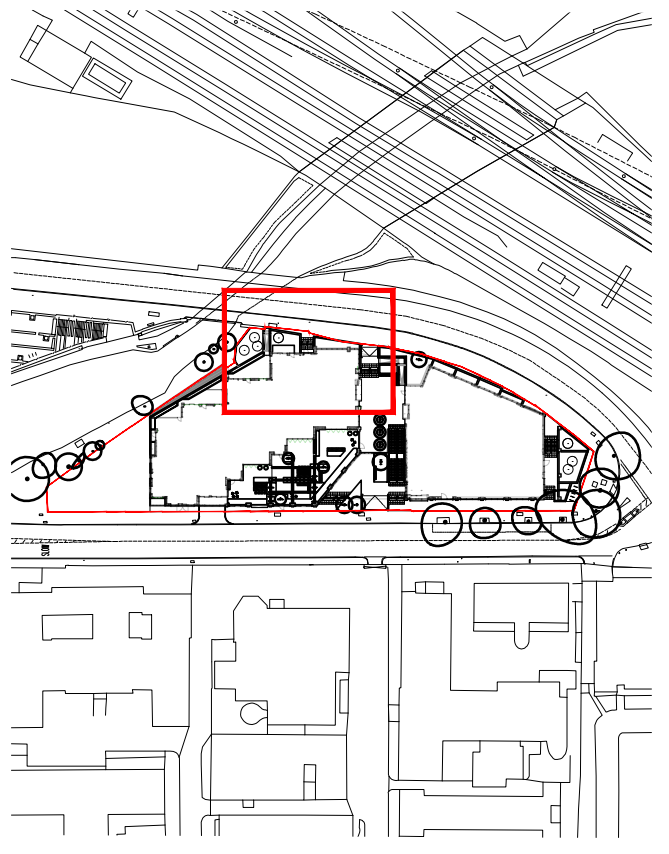
REFER TO HARDWORKS LAYOUT AND REFERENCE PLAN DWG 5657_200

REFER TO FURNITURE LAYOUT AND REFERENCE PLAN DWG 5657_300

REFER TO SOFTWARE LAYOUT AND REFERENCE PLAN DWG 5657_400

TO BE READ IN CONJUNCTION WITH LANDSCAPE ARCHITECT'S EXTERNAL WORKS SPECIFICATION.

TO BE READ IN CONJUNCTION WITH ARCHITECT'S GA DRAWINGS 0010 SERIES



READ THIS FIRST

- Note for Contractors**
This drawing should be considered along with the risk information contained in the CDM Pre Construction Information. This information will include details of the SIGNIFICANT risks which LDA Design has identified which may arise from constructing their designs shown on this drawing. A Competent Contractor should be aware of the typical risks associated with doing this work.
- Note for Workers**
DO NOT START YOUR WORK unless you know the Risks and Controls relating to the work on this drawing (including SAFE SEQUENCES OF WORK and EQUIPMENT).
- Do not issue copies of parts of this drawing without the above Note for Workers (unless you are sure that the Workers can undertake the work safely).

C	Plant species changes following comments from London Wildlife Trust	AW	28/02/20
B	Coordination with architecture	AW	10/05/19
A	Construction issue	AW	21/01/19
REV.	DESCRIPTION	APP.	DATE

LDA DESIGN

PROJECT TITLE
101 Camley Street

DRAWING TITLE
Stage 5: Construction
Planting Plan
Sheet 02

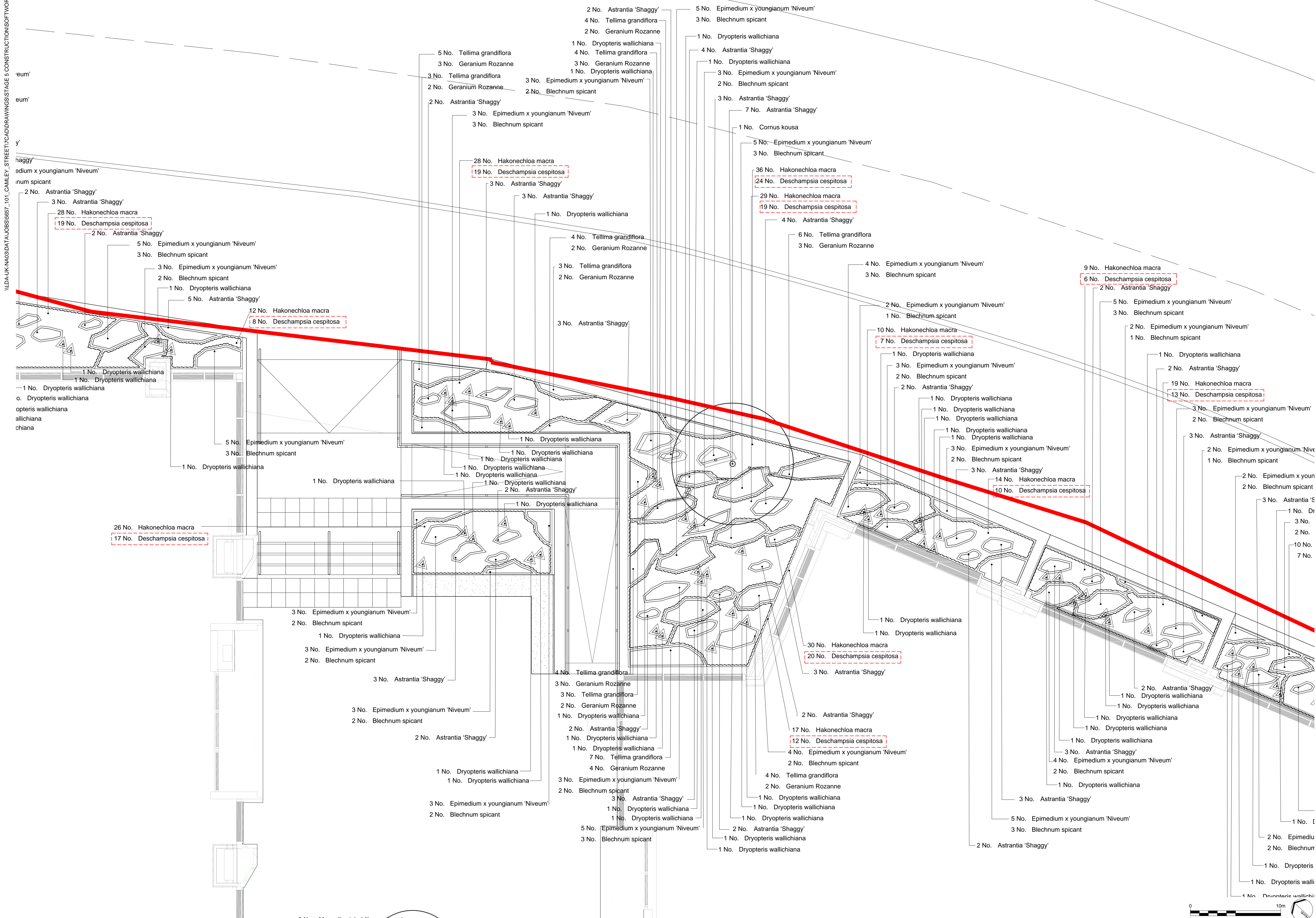
ISSUED BY	Exeter	T:	01392 260 430
DATE	Jan 2019	DRAWN	MC
SCALE	1:200	CHECKED	AW
STATUS	Construction	APPROVED	RA

DWG. NO 5657_402

No dimensions are to be scaled from this drawing. All dimensions are to be checked on site. Area measurements for indicative purposes only.

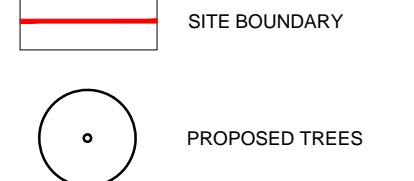
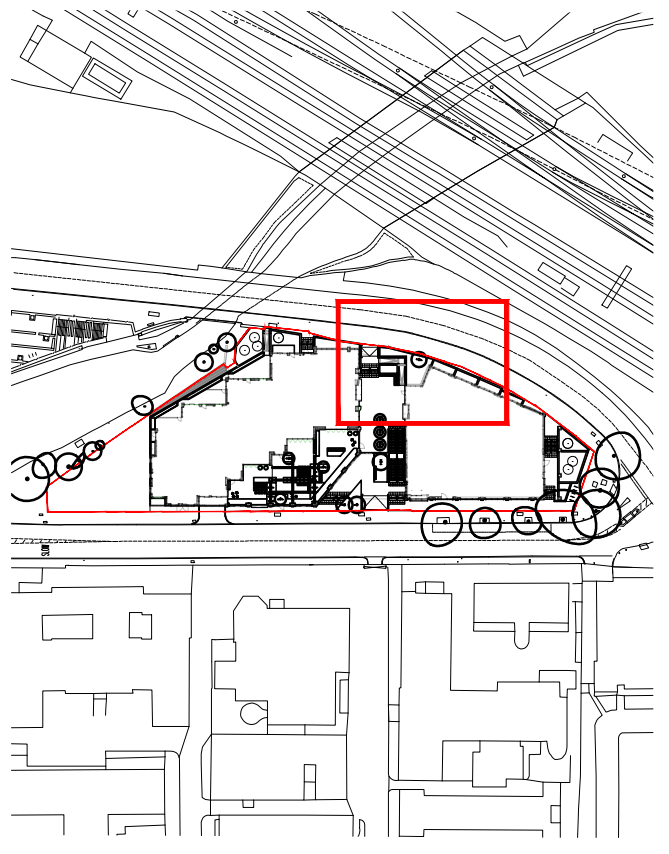
© LDA Design Consulting Ltd. Quality Assured to BS EN ISO 9001 : 2008

Sources: Ordnance Survey



- LEGEND
1. This drawing is to be read in conjunction with all other drawings and specifications.
 2. Do not scale off this drawing. Written dimensions to be taken only.
 3. Any discrepancies found between this drawing and other drawings and specifications in the construction documents must be referred to the Landscape Architect prior to work commencing.
 4. This drawing must not be copied in whole or in part without written consent of LDA design.
 5. These drawings are for finishes only. All foundation, fixing, paving depths and drainage details to be provided by others.
 6. All dimensions in mm unless otherwise stated.
 7. Where dimension sizes of units are given they state length x width x depth.

- NOTES
- REFER TO GENERAL ARRANGEMENT LAYOUT AND REFERENCE PLANS DWG 5657_100 - 104
- REFER TO HARDWORKS LAYOUT AND REFERENCE PLAN DWG 5657_200
- REFER TO FURNITURE LAYOUT AND REFERENCE PLAN DWG 5657_300
- REFER TO SOFTWORKS LAYOUT AND REFERENCE PLAN DWG 5657_400
- TO BE READ IN CONJUNCTION WITH LANDSCAPE ARCHITECT'S EXTERNAL WORKS SPECIFICATION
- TO BE READ IN CONJUNCTION WITH ARCHITECT'S GA DRAWINGS 0010 SERIES



- READ THIS FIRST**
- Note for Contractors**
This drawing should be considered along with the risk information contained in the CDM Pre Construction Information. This information will include details of the SIGNIFICANT risks which LDA Design has identified which may arise from constructing their designs shown on this drawing. A Competent Contractor should be aware of the typical risks associated with doing this work.
- Note for Workers**
DO NOT START YOUR WORK unless you know the Risks and Controls relating to the work on this drawing (including SAFE SEQUENCES OF WORK and EQUIPMENT).
- Do not issue copies of parts of this drawing without the above Note for Workers (unless you are sure that the Workers can undertake the work safely).

C	Plant species changes following comments from London Wildlife Trust	AW	28/02/20
B	Coordination with architecture	AW	10/06/19
A	Construction issue	AW	21/01/19
REV.	DESCRIPTION	APP.	DATE

LDA DESIGN

PROJECT TITLE
101 Camley Street

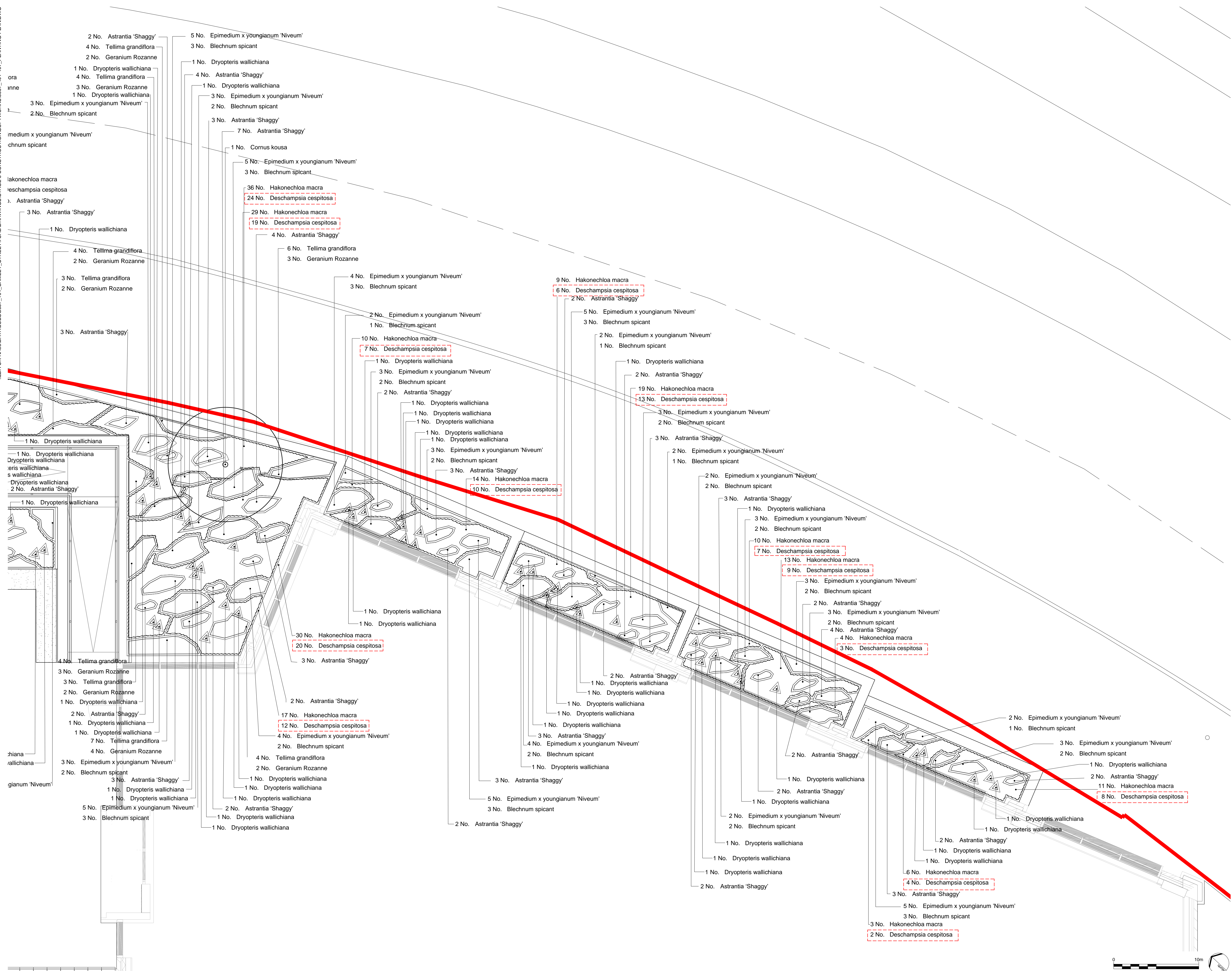
DRAWING TITLE
Stage 5: Construction
Planting Plan
Sheet 03

ISSUED BY	Exeter	T: 01392 260 430	
DATE	Jan 2019	DRAWN	MC
SCALE	1:200	CHECKED	AW
STATUS	Construction	APPROVED	RA

DWG. NO 5657_403

No dimensions are to be scaled from this drawing. All dimensions are to be checked on site. Area measurements for indicative purposes only.

© LDA Design Consulting Ltd. Quality Assured to BS EN ISO 9001:2008
Sources: Ordnance Survey



LEGEND

1. This drawing is to be read in conjunction with all other drawings and specifications.
2. Do not scale off this drawing. Written dimensions to be taken only.
3. Any discrepancies found between this drawing and other drawings and specifications in the construction documents must be referred to the Landscape Architect prior to work commencing.
4. This drawing must not be copied in whole or in part without written consent of LDA design.
5. These drawings are for finishes only. All foundation, fixing, paving depths and drainage details to be provided by others.
6. All dimensions in mm unless otherwise stated.
7. Where dimension sizes of units are given they state length x width x depth.

NOTES:

REFER TO GENERAL ARRANGEMENT LAYOUT AND REFERENCE PLANS DWG 6567_100 - 104

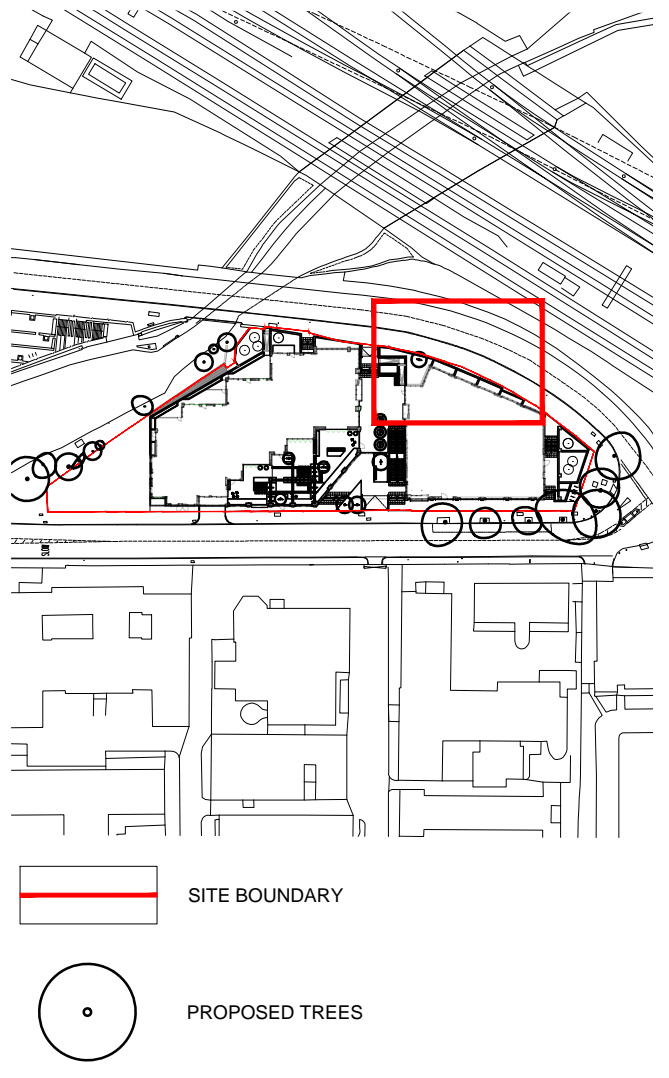
REFER TO HARDWORKS LAYOUT AND REFERENCE PLAN DWG 6567_200

REFER TO FURNITURE LAYOUT AND REFERENCE PLAN DWG 6567_400

REFER TO SOFTWORKS LAYOUT AND REFERENCE PLAN DWG 6567_400

TO BE READ IN CONJUNCTION WITH LANDSCAPE ARCHITECT'S EXTERNAL WORKS SPECIFICATION

TO BE READ IN CONJUNCTION WITH ARCHITECT'S GA DRAWINGS 0010 SERIES



READ THIS FIRST

Note for Contractors
This drawing should be considered along with the risk information contained in the CDM Pre Construction Information. This information will include details of the SIGNIFICANT risks which LDA Design has identified which may arise from constructing their designs shown on this drawing. A Competent Contractor should be aware of the typical risks associated with doing this work.

Note for Workers
DO NOT START YOUR WORK unless you know the Risks and Controls relating to the work on this drawing (including SAFE SEQUENCES OF WORK and EQUIPMENT).

Do not issue copies of parts of this drawing without the above Note for Workers (unless you are sure that the Workers can undertake the work safely).

REV.	DESCRIPTION	APP.	DATE
C	Plant species changes following comments from London Wildlife Trust	AW	28/02/20
B	Coordination with architecture	AW	10/06/19
A	Construction issue	AW	21/01/19

LDA DESIGN

PROJECT TITLE
101 Canley Street

DRAWING TITLE
Stage 5: Construction
Planting Plan
Sheet 04

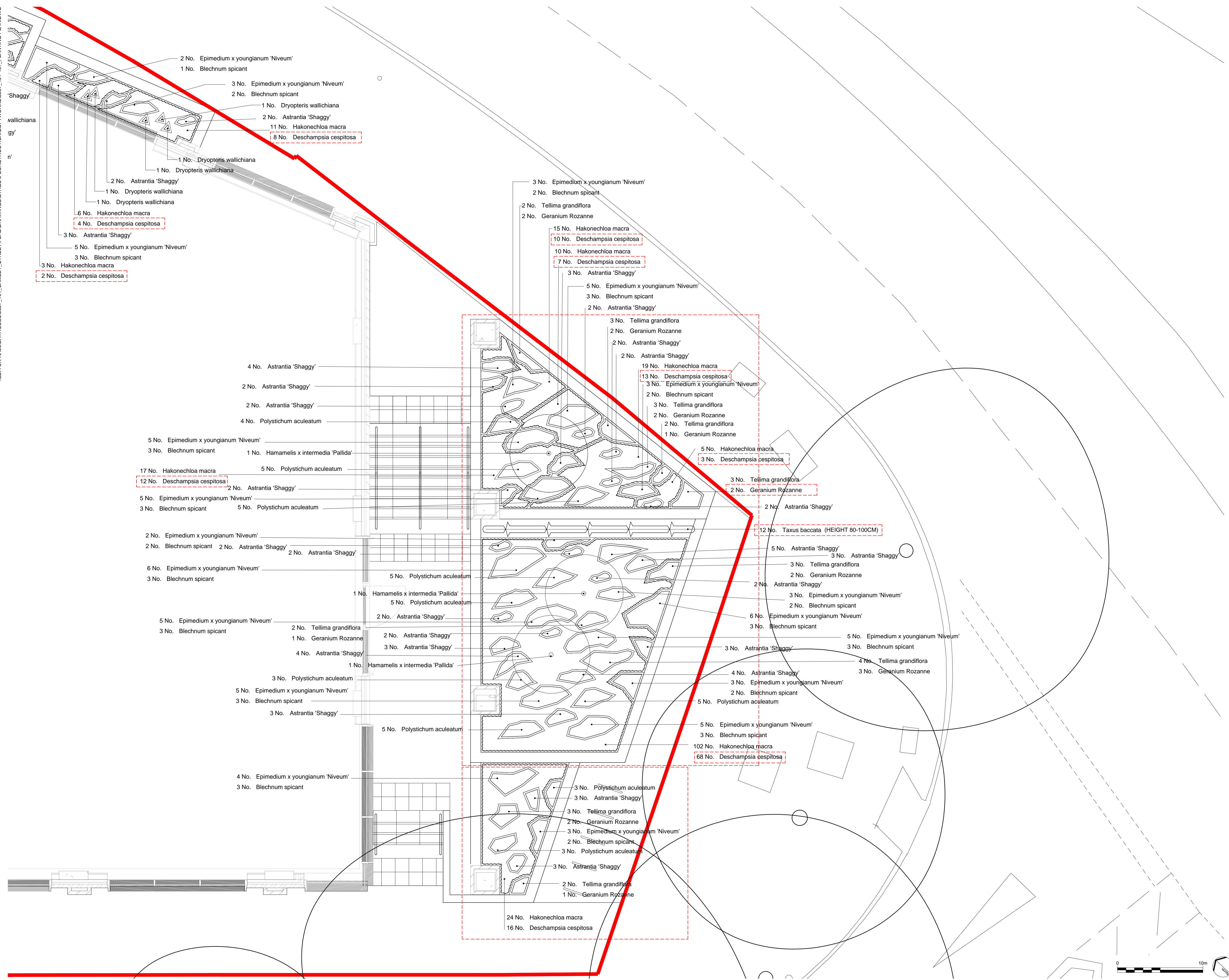
ISSUED BY: Exeter T: 01392 260 430
DATE: Jan 2019 DRAWN: MC
SCALE: A1 1:200 CHECKED: AW
STATUS: Construction APPROVED: RAS

DWG. NO 5657_404

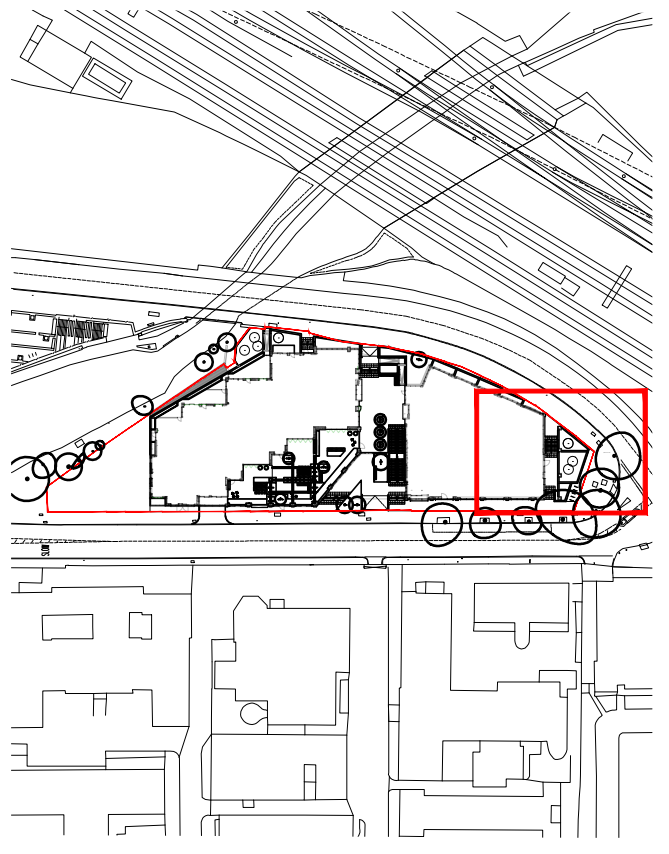
No dimensions are to be scaled from this drawing. All dimensions are to be checked on site. Area measurements for indicative purposes only.

© LDA Design Consulting Ltd. Quality Assured to BS EN ISO 9001 : 2008
Sources: Ordnance Survey

\\LDA\UK-NA03\DATA\JOBS\6567_101_CAMLEY_STREET\CD\DRAWINGS\STAGE 5 CONSTRUCTION\SOFTWORKS\6567_401-407_PLANTING PLAN.DWG



- LEGEND**
1. This drawing is to be read in conjunction with all other drawings and specifications.
 2. Do not scale off this drawing. Written dimensions to be taken only.
 3. Any discrepancies found between this drawing and other drawings and specifications in the construction documents must be referred to the Landscape Architect prior to work commencing.
 4. This drawing must not be copied in whole or in part without written consent of LDA design.
 5. These drawings are for finishes only. All foundation, fixing, paving depths and drainage details to be provided by others.
 6. All dimensions in mm unless otherwise stated.
 7. Where dimension sizes of units are given they state length x width x depth.
- NOTES:**
- REFER TO GENERAL ARRANGEMENT LAYOUT AND REFERENCE PLANS DWG 6567_100 - 104
 - REFER TO HARDWORKS LAYOUT AND REFERENCE PLAN DWG 6567_200
 - REFER TO FURNITURE LAYOUT AND REFERENCE PLAN DWG 6567_400
 - REFER TO SOFTWORKS LAYOUT AND REFERENCE PLAN DWG 6567_300
 - TO BE READ IN CONJUNCTION WITH LANDSCAPE ARCHITECT'S EXTERNAL WORKS SPECIFICATION.
 - TO BE READ IN CONJUNCTION WITH ARCHITECT'S GA DRAWINGS 0010 SERIES



- SITE BOUNDARY
- PROPOSED TREES

READ THIS FIRST

- Note for Contractors**
This drawing should be considered along with the risk information contained in the CDM Pre Construction Information. This information will include details of the SIGNIFICANT risks which LDA Design has identified which may arise from constructing their designs shown on this drawing. A Competent Contractor should be aware of the typical risks associated with doing this work.
- Note for Workers**
DO NOT START YOUR WORK unless you know the Risks and Controls relating to the work on this drawing (including SAFE SEQUENCES OF WORK and EQUIPMENT).
- Do not issue copies of parts of this drawing without the above Note for Workers (unless you are sure that the Workers can undertake the work safely).

REV.	DESCRIPTION	APP. DATE
C	Plant species changes following comments from London Wildlife Trust Update to planting areas around building column	AW 28/02/20
B	Coordination with architecture Construction issue	AW 10/06/19
A		AW 21/01/19

LDA DESIGN

PROJECT TITLE
101 Camley Street

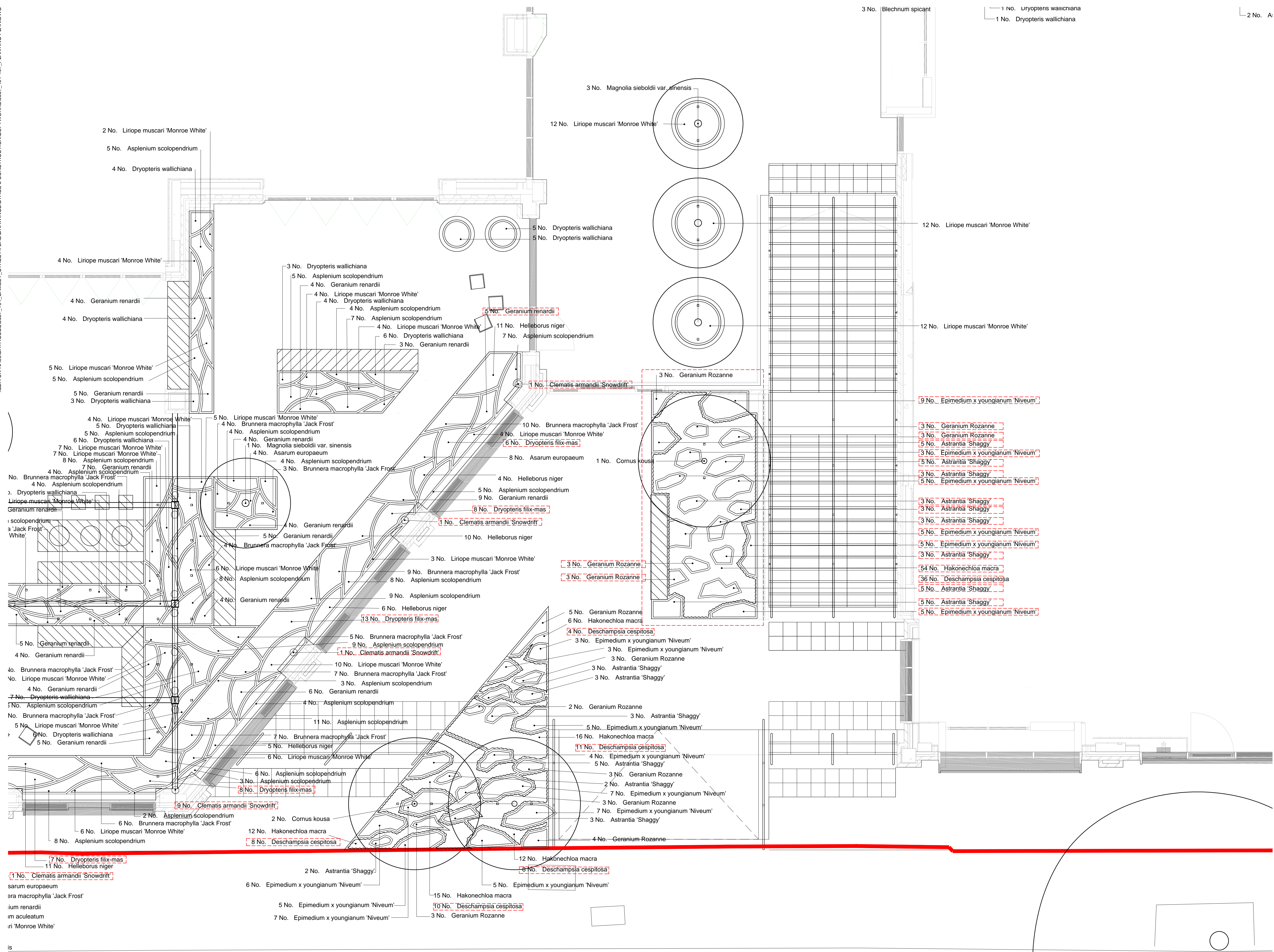
DRAWING TITLE
Stage 5: Construction
Planting Plan
Sheet 05

ISSUED BY	Exeter	T: 01392 260 430
DATE	Jan 2019	DRAWN MC
SCALE	1:200	CHECKED AW
STATUS	Construction	APPROVED RAs

DWG. NO 5657_405

No dimensions are to be scaled from this drawing. All dimensions are to be checked on site. Area measurements for indicative purposes only.

© LDA Design Consulting Ltd. Quality Assured to BS EN ISO 9001 : 2008
Sources: Ordnance Survey



LEGEND

1 No. *Dryopteris wallichiana*
 2 No. *A...*

1. This drawing is to be read in conjunction with all other drawings and specifications.
 2. Do not scale off this drawing. Written dimensions to be taken only.
 3. Any discrepancies found between this drawing and other drawings and specifications in the construction documents must be referred to the Landscape Architect prior to work commencing.
 4. This drawing must not be copied in whole or in part without written consent of LDA design.
 5. These drawings are for finishes only. All foundation, fixing, paving depths and drainage details to be provided by others.
 6. All dimensions in mm unless otherwise stated.
 7. Where dimension sizes of units are given they state length x width x depth.

NOTES:

REFER TO GENERAL ARRANGEMENT LAYOUT AND REFERENCE PLANS DWG 5657_100 - 104

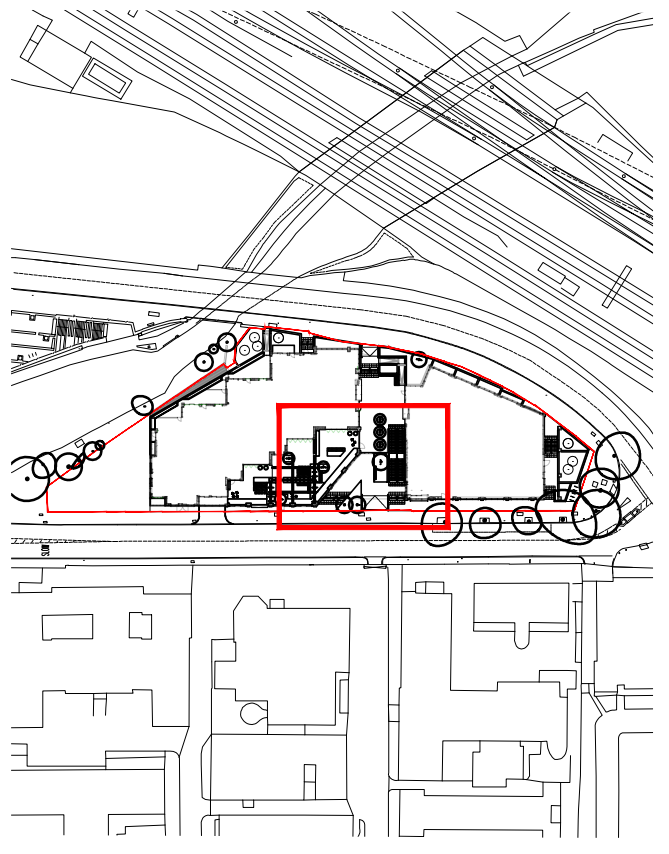
REFER TO HARDWORKS LAYOUT AND REFERENCE PLAN DWG 5657_200

REFER TO FURNITURE LAYOUT AND REFERENCE PLAN DWG 5657_400

REFER TO SOFTWORKS LAYOUT AND REFERENCE PLAN DWG 5657_400

TO BE READ IN CONJUNCTION WITH LANDSCAPE ARCHITECT'S EXTERNAL WORKS SPECIFICATION

TO BE READ IN CONJUNCTION WITH ARCHITECT'S GA DRAWINGS 0010 SERIES



— SITE BOUNDARY

○ PROPOSED TREES

READ THIS FIRST

Note for Contractors
 This drawing should be considered along with the risk information contained in the CDM Pre Construction Information. This information will include details of the SIGNIFICANT risks which LDA Design has identified which may arise from constructing their designs shown on this drawing. A Competent Contractor should be aware of the typical risks associated with doing this work.

Note for Workers
 DO NOT START YOUR WORK unless you know the Risks and Controls relating to the work on this drawing (including SAFE SEQUENCES OF WORK and EQUIPMENT).

Do not issue copies of parts of this drawing without the above Note for Workers (unless you are sure that the Workers can undertake the work safely).

REV.	DESCRIPTION	APP.	DATE
D	Plant species changes following comments from London Wildlife Trust	AW	28/02/20
C	Coordination with building entrance	AW	18/10/19
B	Coordination with architecture	AW	10/06/19
A	Construction issue	AW	21/01/19

LDA DESIGN

PROJECT TITLE
 101 Canley Street

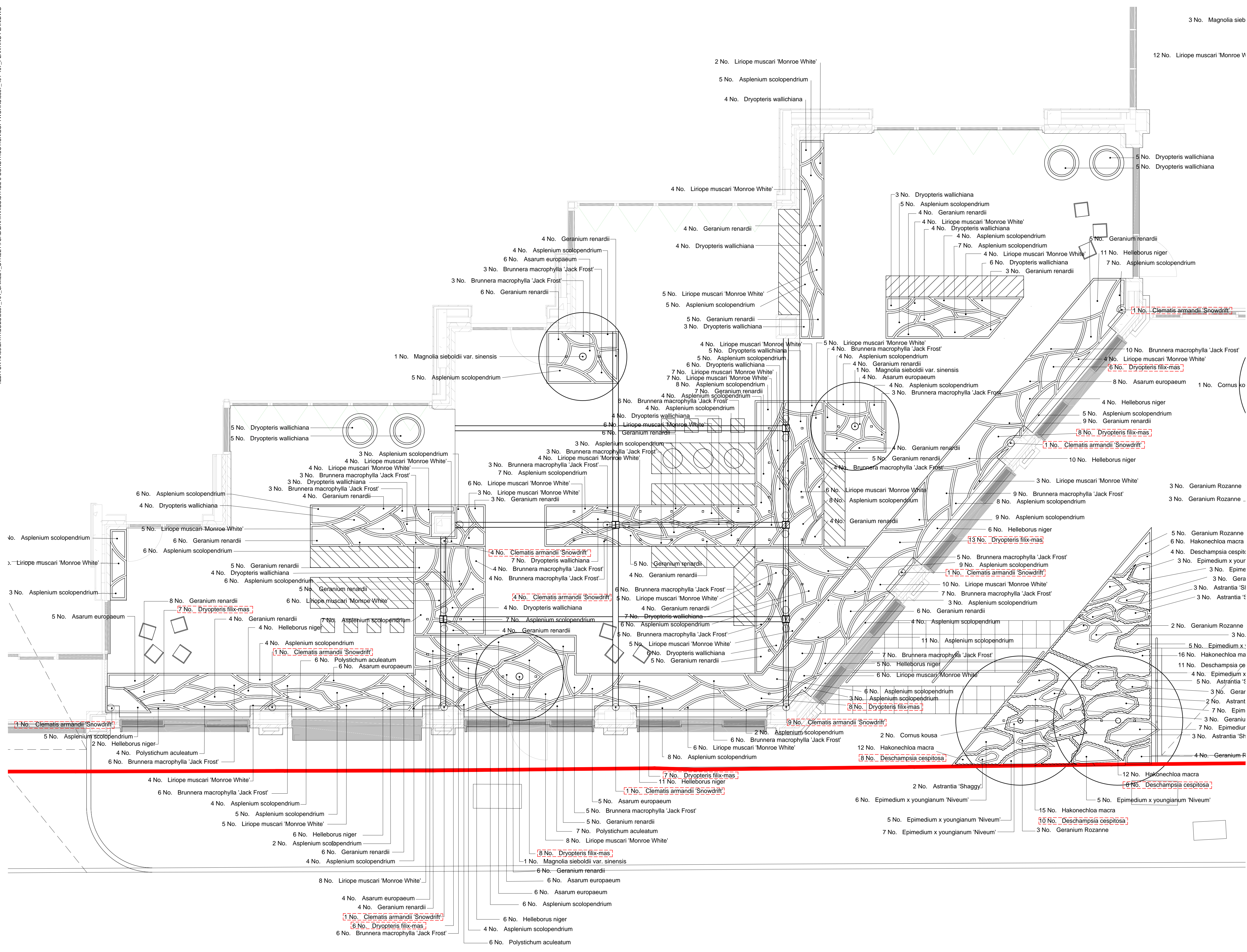
DRAWING TITLE
 Stage 5: Construction
 Planting Plan
 Sheet 06

ISSUED BY: Exeter T: 01392 260 430
 DATE: Jan 2019 DRAWN: MC
 SCALE: 1:200 CHECKED: AW
 STATUS: Construction APPROVED: RAS

DWG. NO 5657_406

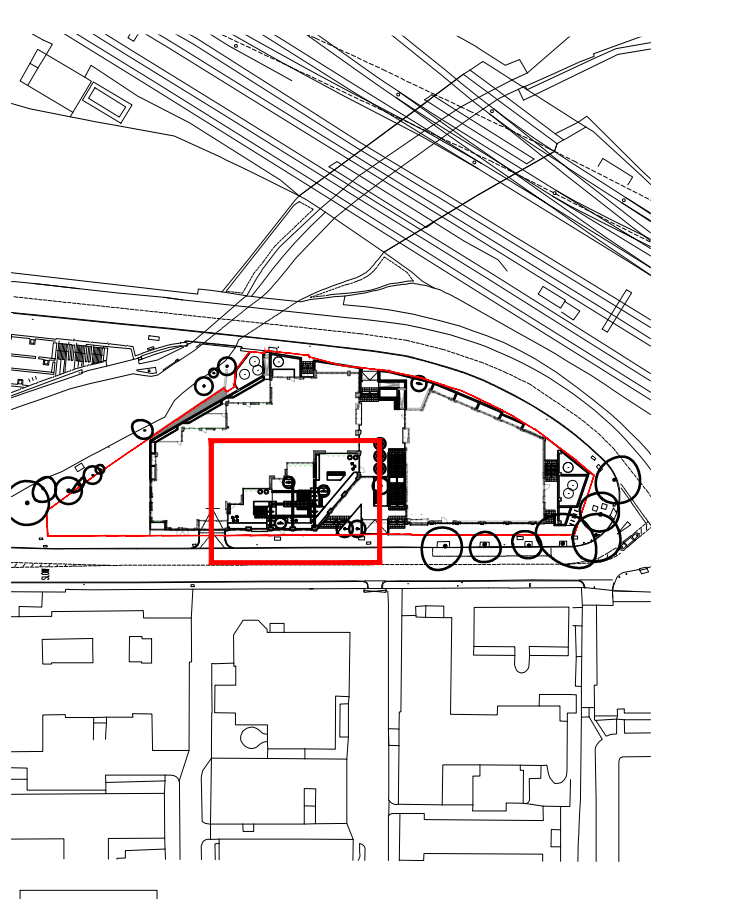
No dimensions are to be scaled from this drawing. All dimensions are to be checked on site. Area measurements for indicative purposes only.

© LDA Design Consulting Ltd. Quality Assured to BS EN ISO 9001: 2008
 Sources: Ordnance Survey



- LEGEND**
1. This drawing is to be read in conjunction with all other drawings and specifications.
 2. Do not scale off this drawing. Written dimensions to be taken only.
 3. Any discrepancies found between this drawing and other drawings and specifications in the construction documents must be referred to the Landscape Architect prior to work commencing.
 4. This drawing must not be copied in whole or in part without written consent of LDA design.
 5. These drawings are for finishes only. All foundation, fixing, paving depths and drainage details to be provided by others.
 6. All dimensions in mm unless otherwise stated.
 7. Where dimension sizes of units are given they state length x width x depth.

- NOTES**
- REFER TO GENERAL ARRANGEMENT LAYOUT AND REFERENCE PLANS DWG 5657_100 - 104
- REFER TO HARDWORKS LAYOUT AND REFERENCE PLAN DWG 5657_200
- REFER TO FURNITURE LAYOUT AND REFERENCE PLAN DWG 5657_400
- REFER TO SOFTWORKS LAYOUT AND REFERENCE PLAN DWG 5657_400
- TO BE READ IN CONJUNCTION WITH LANDSCAPE ARCHITECT'S EXTERNAL WORKS SPECIFICATION
- TO BE READ IN CONJUNCTION WITH ARCHITECT'S GA DRAWINGS 0010 SERIES



- SITE BOUNDARY
- PROPOSED TREES

- READ THIS FIRST**
- Note for Contractors**
This drawing should be considered along with the risk information contained in the CDM Pre Construction Information. This information will include details of the SIGNIFICANT risks which LDA Design has identified which may arise from constructing their designs shown on this drawing. A Competent Contractor should be aware of the typical risks associated with doing this work.
- Note for Workers**
DO NOT START YOUR WORK unless you know the Risks and Controls relating to the work on this drawing (including SAFE SEQUENCES OF WORK AND EQUIPMENT).
- Do not issue copies of parts of this drawing without the above Note for Workers (unless you are sure that the Workers can undertake the work safely).

REV.	DESCRIPTION	APP.	DATE
D	Plant species changes following comments from London Wildlife Trust	AW	28/02/20
C	Coordination with slab penetrations	AW	18/10/19
B	Coordination with architecture	AW	10/06/19
A	Construction issues	AW	21/01/19

LD A DESIGN

PROJECT TITLE
101 Camley Street

DRAWING TITLE
Stage 5: Construction
Planting Plan
Sheet 07

ISSUED BY: Exeter T: 01392 260 430
DATE: Jan 2019 DRAWN: MC
SCALE: A1 1:200 CHECKED: AW
STATUS: Construction APPROVED: RAS

DWG. NO 5657_407

No dimensions are to be scaled from this drawing. All dimensions are to be checked on site. Area measurements for indicative purposes only.

© LDA Design Consulting Ltd. Quality Assured to BS EN ISO 9001:2008
Sources: Ordnance Survey

