

OFFICE TERRACE

THE TERRACE WILL CREATE AN EXTENSION TO THE OFFICE SPACE BY PLANTING TO CREATE A GREEN BACKDROP TO THE SPACE FOR OFFICE TENANTS LOOKING OUT.

THE TERRACE WILL BE FRAMED BY RAISED PLANTERS WHICH WILL BE PLANTED WITH A VARIETY OF HEDGE AND FLOWERING PLANTS.

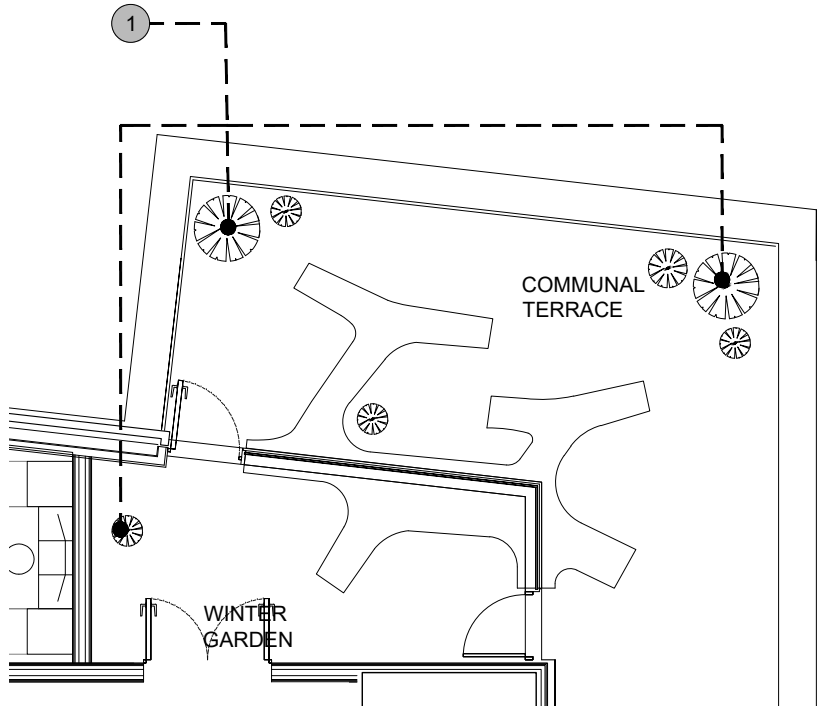
RESIDENTS TERRACE

THE RESIDENTIAL TERRACE IS DESIGNED TO CREATE A SPACE THAT TRANSCENDS AN INTERNAL WINTER GARDEN WITH AN OUTDOOR TERRACE MAKING IT USABLE THROUGHOUT THE YEAR.

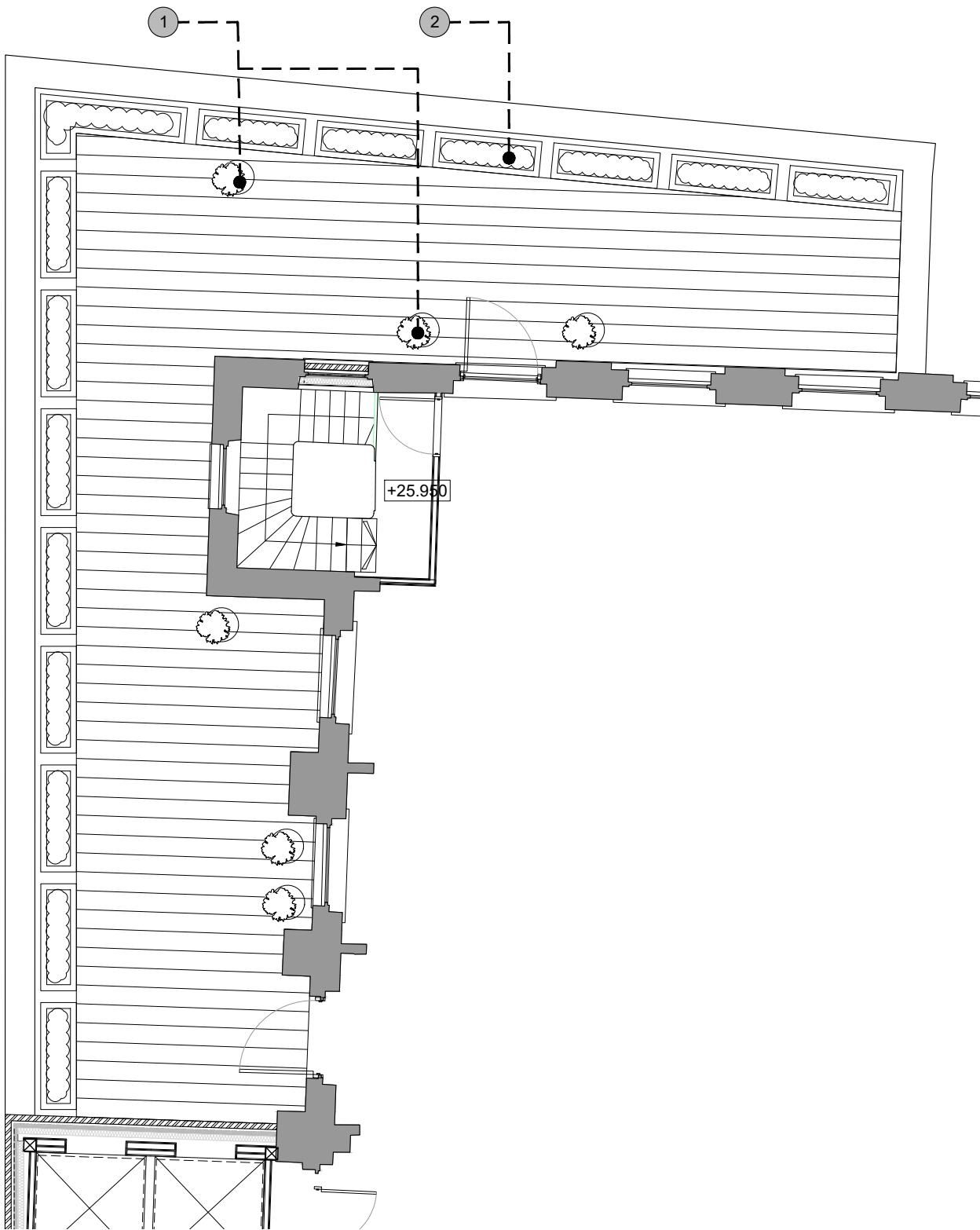
FEATURE SHRUBS IN RAISED POTS WILL PROVIDE SEASONAL INTEREST.

PLANTING KEY

- 1
- PLANTS IN POTS - GUELDER ROSE (VIBURNUM OPULUS) / COMMON DOGWOOD (CORNUS SANGUINEA) / NIGHT SCENTED STOCK (MATTIOLA BICORNIA)
- 2
- EDGE PLANTERS - BOX (BUXUS SEMPERVIRENS) / WILD PRIVET (LIGUSTRUM VULGARE) / VIPERS BURGLOSS (ECHIUM BURGLOSS) / PRIMROSE (PRIMULA VULGARIS) / LEMON BALM (MELISSA OFFICINALIS)



RESIDENT TERRACE



OFFICE TERRACE

rev	description	drawn	auth	date
1	DO NOT SCALE OFF THIS DRAWING			

**LeachRhodesWalker**  
Architects

info@lrw.co.uk | www.lrw.co.uk  
50 Dearmans Place Manchester M3 5LH  
Manchester London Bucharest  
+44 (0)161 833 0211 +44 (0)207 993 1363 +40 (21)650 4026

client				
CLERKENWELL LIFESTYLE UK				
project				
VINE HILL				
project no		drawing no		rev
8060		L(00)226		.
description				
HOTEL / RESIDENTIAL BIODIVERSITY PLANNING CONDITION 22				
scale	date drawn	drawn by	authorised by	
1:100@ A3	28.02.20	HL	SJM	
HL1001001000				