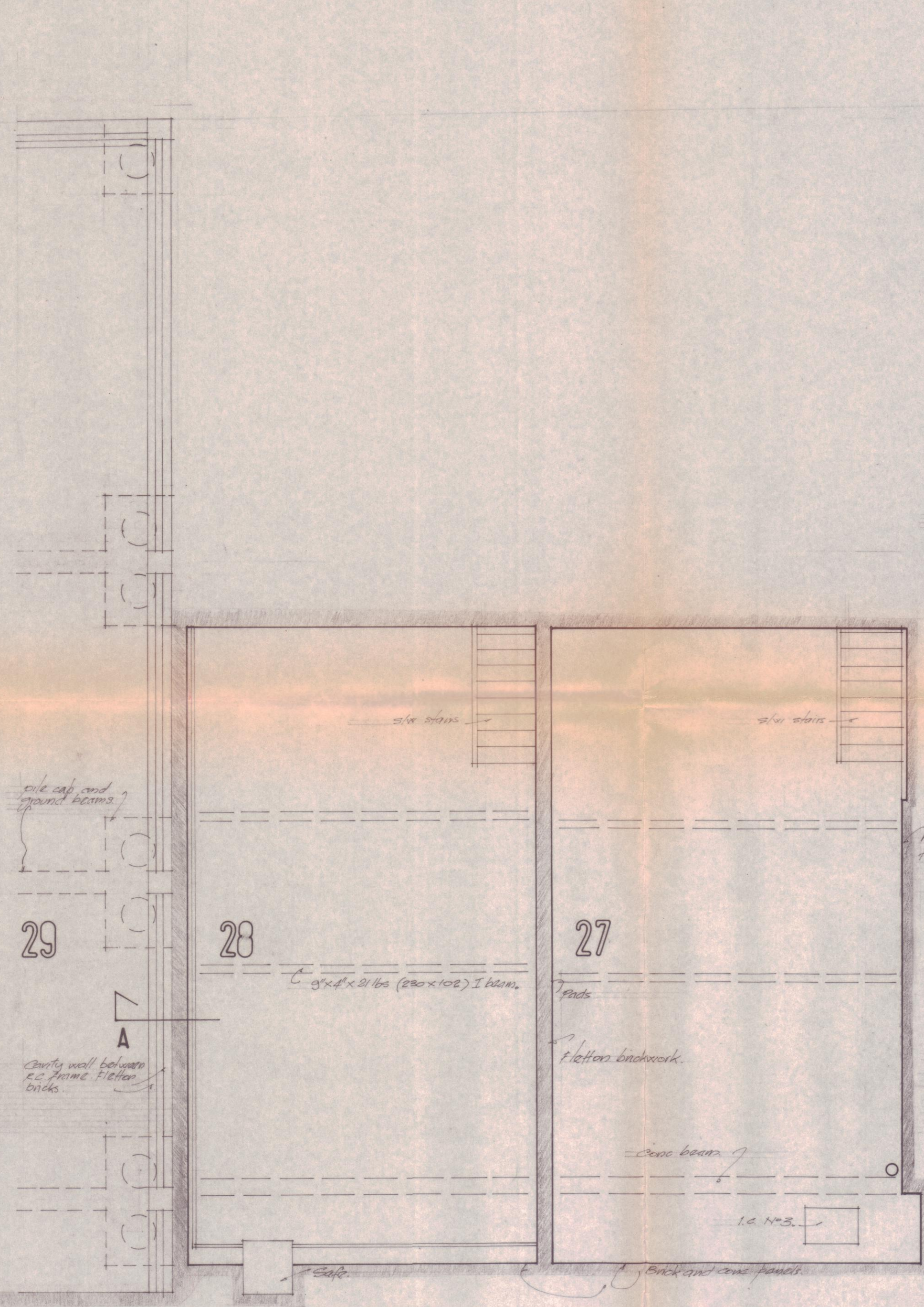
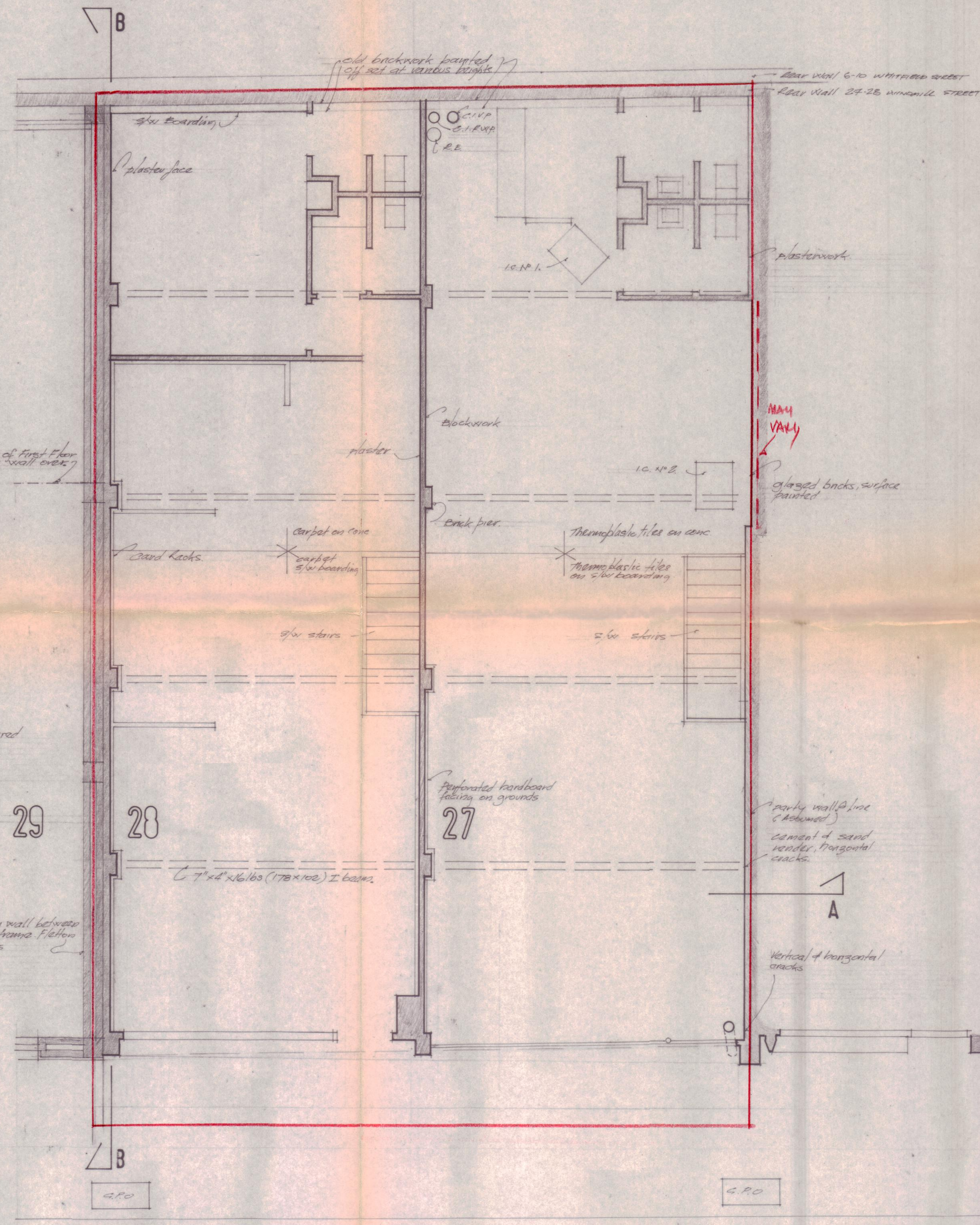


NOTES

DIMENSIONS RELATING TO CONSTRUCTION ALREADY BUILT ON SITE MUST BE CHECKED BY THE CONTRACTOR

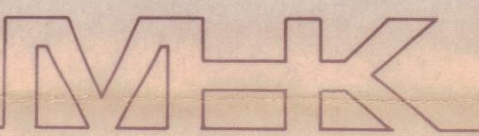


BASEMENT FLOOR PLAN.



GROUND FLOOR PLAN.

GROSS AREA 171.831m² [1850 sq ft.]



MACINTOSH HAINES & KENNEDY
46 High Street
Croydon
Surrey
CR0 1YB
Telephone 01886 3931

REVISIONS

MK	Detail	Date	Int
	Detail	5.11.1987	

LONDON BOROUGH OF CAMDEN
PLANNING AND COMMUNICATIONS
DEPARTMENT
12 NOV 1987 (A.M.)
RECEIVED
ACK. REF. TO

JOB
27-23 WINDMILL ST.

TITLE
SURVEY: BASEMENT
& GROUND FLOORS

SCALE 1:50

DATE 6-10-1987 DRAWN

MK 1450 01.1