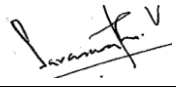
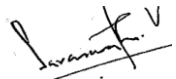
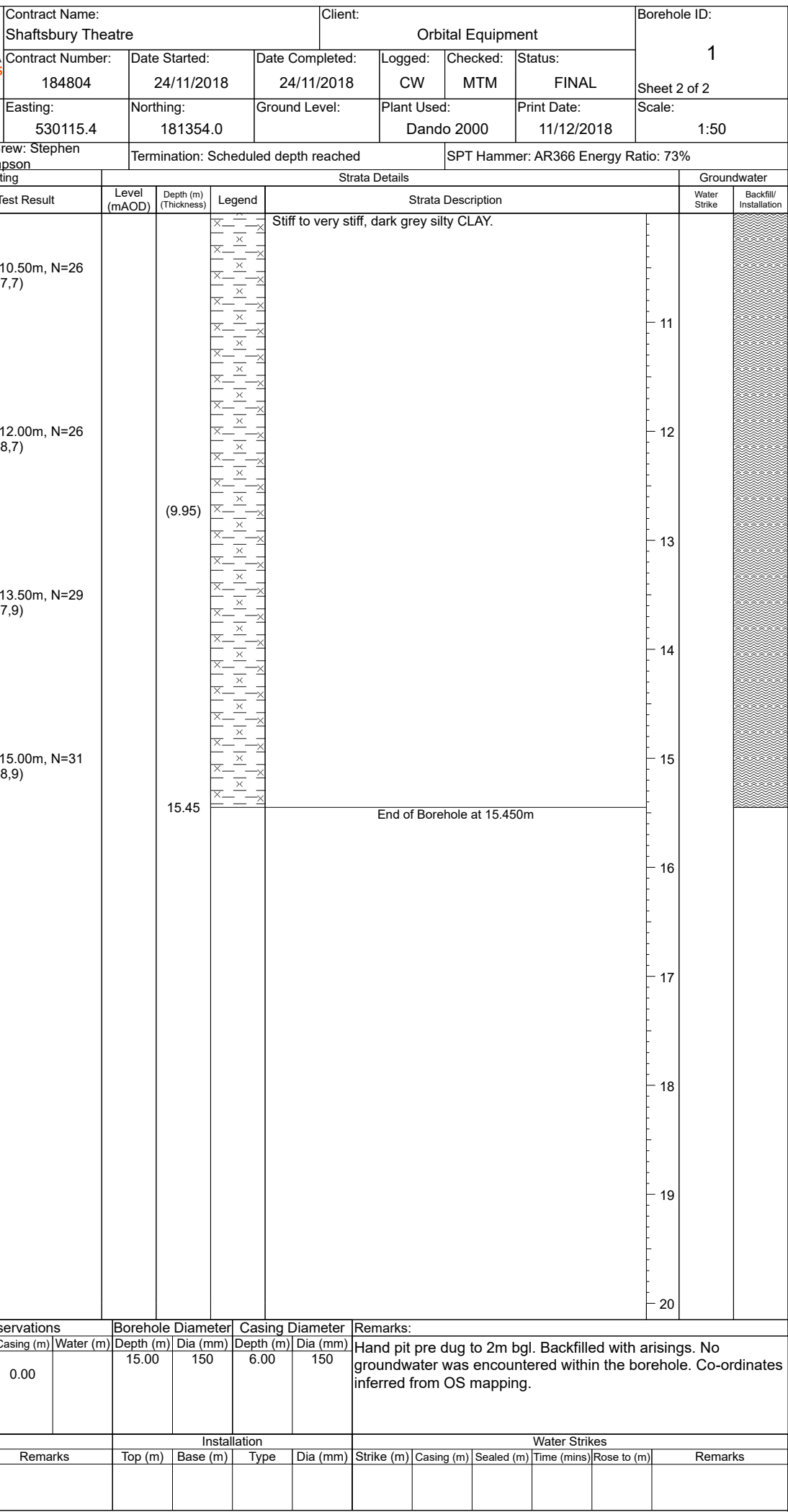


**Source Design Review Form**

SUBMISSION DETAILS						
Documents to be Reviewed inclusive of reference numbers and revisions:		Strata Driller's Logs for Borehole Number 2B, 1, 02a Borehole Location Plan 2714-209 P1				
Name of Document Author:		Strata Geotechnics	Job Title:		Driller Logs and Location Plan for Shaftesbury Theatre	
Date Issued for Comment / Approval:		03.12.18	Date to be returned to Author:		10.12.18	
Section	COMMENTS					
Borehole Location Plan- Notes	<ul style="list-style-type: none">1) General Note G2- Spell Check2) General Note G8- Correct reference of designated individual3) Reference to other drawings to be read in conjunction with the location plan, to be included as a note4) Populate revision history box5) Borehole Logs 2B, 1 and 02a which have been reviewed are not captured on the location plan					
Borehole Log 2B	<ul style="list-style-type: none">1) Capture that no groundwater was encountered2) Under 'shift details', please clarify if the water @ 15.20m was added to assist or if it was encountered ground water strike3) 'Depth to top of stratum' starts at 18.45m on Sheet 1. Is this to be mAOD Level?4) Sample/Test details captures sample Type as 'D'. Suggest a remark is added to specify what D stands for; similarly, specify what 'S' stands for under in-situ test5) Description of the soil encountered on the borehole log could follow generic borehole description protocol and describe the sand, based on particle size, to be fine, coarse etc Likewise, the Clay could be described based on its strength. Ex, medium, high etc6) On the top row, populate 'on behalf of' with Orbital Equipment <p>Similar comments for Borehole Logs 1 & 2a</p> <p>Checked by Sara Vijayasathya – Source Design Services</p>					
CHECKING APPROVAL						
Date Reviewed	03.12.18	Document Approved	YES	NO	Signature of Checker	
Date Returned to Reviewer	11.12.18	Document Approved	YES	NO	Signature of Checker	

Checker is signing to verify the document, to confirm that authority has been granted to do so and to confirm that an appropriate amount of time has been allocated to this task.

Chiselling				Installation				Water Strikes					
From (m)	To (m)	Duration	Remarks	Top (m)	Base (m)	Type	Dia (mm)	Strike (m)	Casing (m)	Sealed (m)	Time (mins)	Rose to (m)	Remarks



Chiselling				Installation				Water Strikes					
From (m)	To (m)	Duration	Remarks	Top (m)	Base (m)	Type	Dia (mm)	Strike (m)	Casing (m)	Sealed (m)	Time (mins)	Rose to (m)	Remarks

