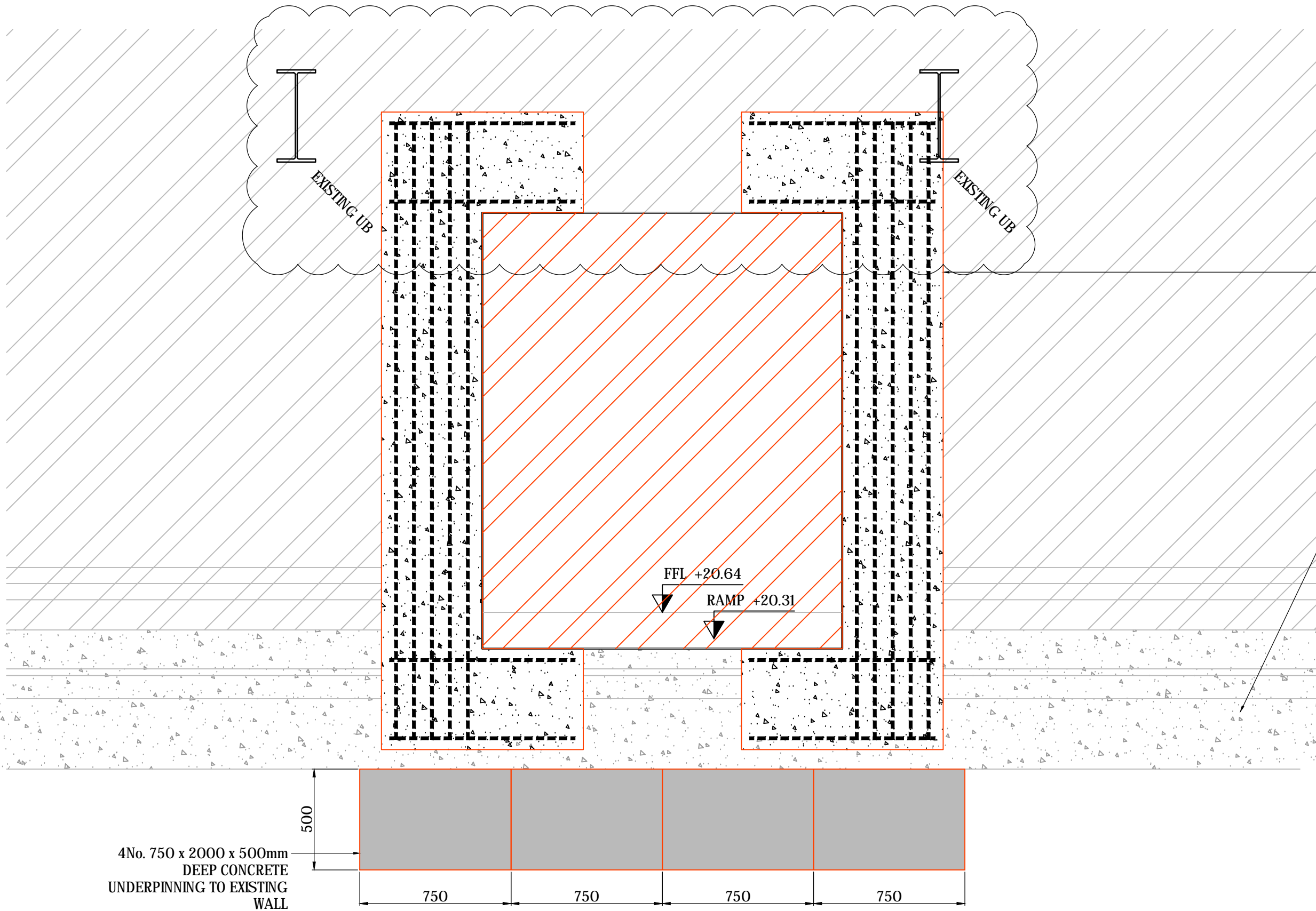


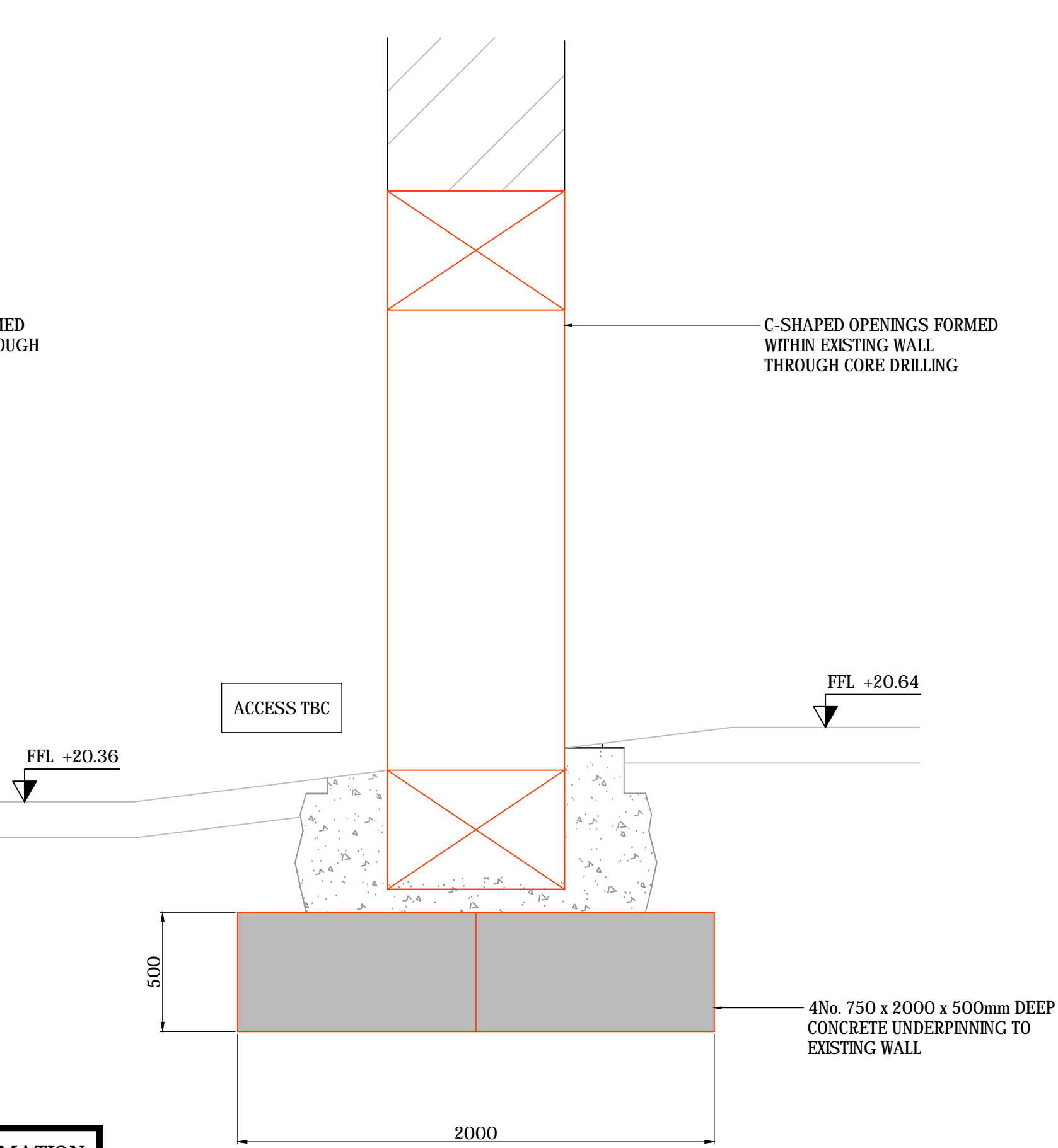
STEP 3 - TYPICAL ELEVATION ON CORE DRILLING FOR OPENING (SCALE 1:20 AT A1)

DESIGN TBC FOLLOWING CONFIRMATION OF WALL SIZE AND THICKNESSES

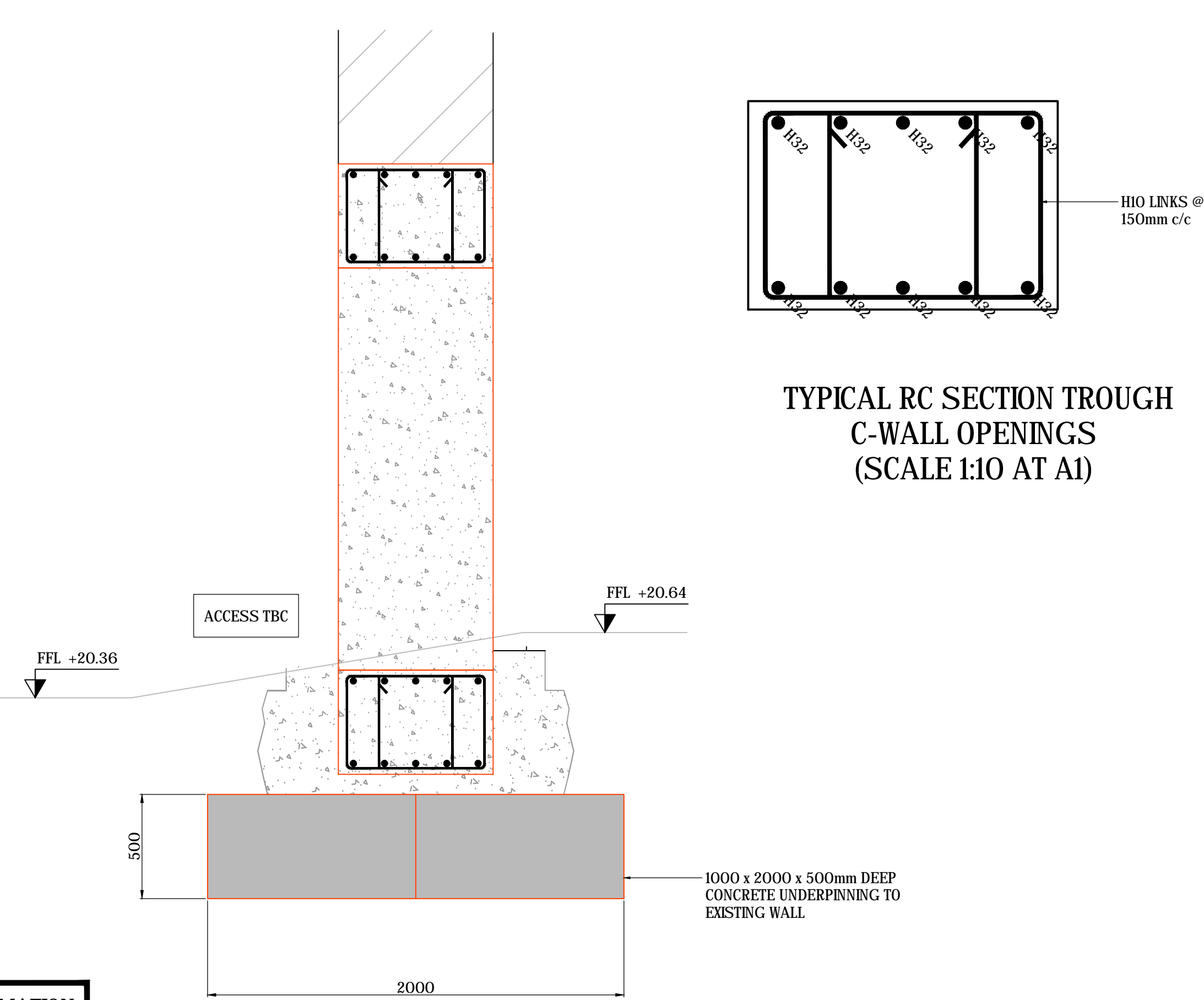


STEP 4 - TYPICAL ELEVATION ON RC C-SHAPED WALLS (SCALE 1:20 AT A1)

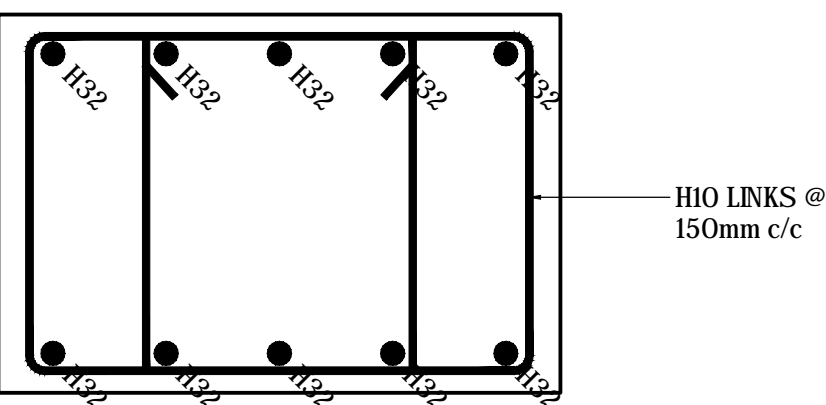
DESIGN TBC FOLLOWING CONFIRMATION OF WALL SIZE AND THICKNESSES



STEP 3 - TYPICAL SECTION THROUGH CORE DRILLING FOR OPENING (SCALE 1:20 AT A1)



STEP 4 - TYPICAL SECTION THROUGH RC C-SHAPED WALLS (SCALE 1:20 AT A1)



TYPICAL RC SECTION THROUGH C-WALL OPENINGS (SCALE 1:10 AT A1)

DO NOT SCALE THIS DRAWING.

Original Drawing Size A1

Notes

PLEASE REFER TO MJC DRAWING 2714-1020 FOR NOTES

TENDER ISSUE

TI	24/01/20	REVISED TO SUIT MEETING COMMENTS	DC
T	08/01/20	TENDER ISSUE	DC
P	15/11/19	PRELIMINARY ISSUE FOR COMMENTS	DC

Rev.	Date	Description	By
Revisions			

Michael Jackson Consulting

Chartered Structural Engineers

204 BOLTON ROAD
WALKDEN, WORSLEY
MANCHESTER, M28 3BN
Tel: 0161 790 4404
Fax: 0161 790 4405

Client
Shaftesbury Theatre

Site
SHAFTESBURY THEATRE

Project
PROPOSED BASEMENT

Drawing Title
STEPS 3 & 4 TO FORM
NEW OPENING IN
EXISTING WALL

Scale AS SHOWN	Date OCT 2019	Drawn DC	Checked	Passed
-------------------	------------------	-------------	---------	--------

DRG. No.
2714-1017-T1

THIS DRAWING AND THE COMPUTER FILE OF THIS DRAWING ARE COPYRIGHT. THE COPYRIGHT BELONGS TO MICHAEL JACKSON CONSULTING ENGINEERS LIMITED (MJCE LIMITED). THIS DRAWING MAY THEREFORE, NOT BE REPRODUCED IN ANY FORMAT WITHOUT THE WRITTEN CONSENT OF MJCE LIMITED AND THE COMPUTER FILE MAY NOT BE TRANSFERRED WITHOUT THE WRITTEN CONSENT OF MJCE LIMITED.