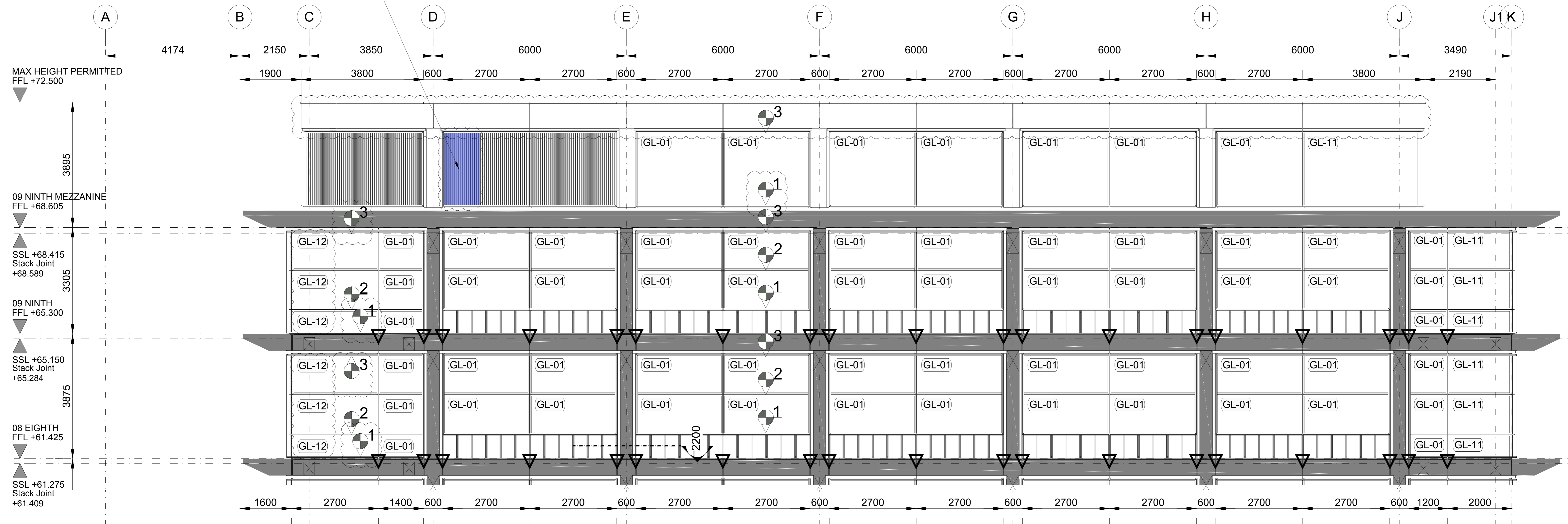
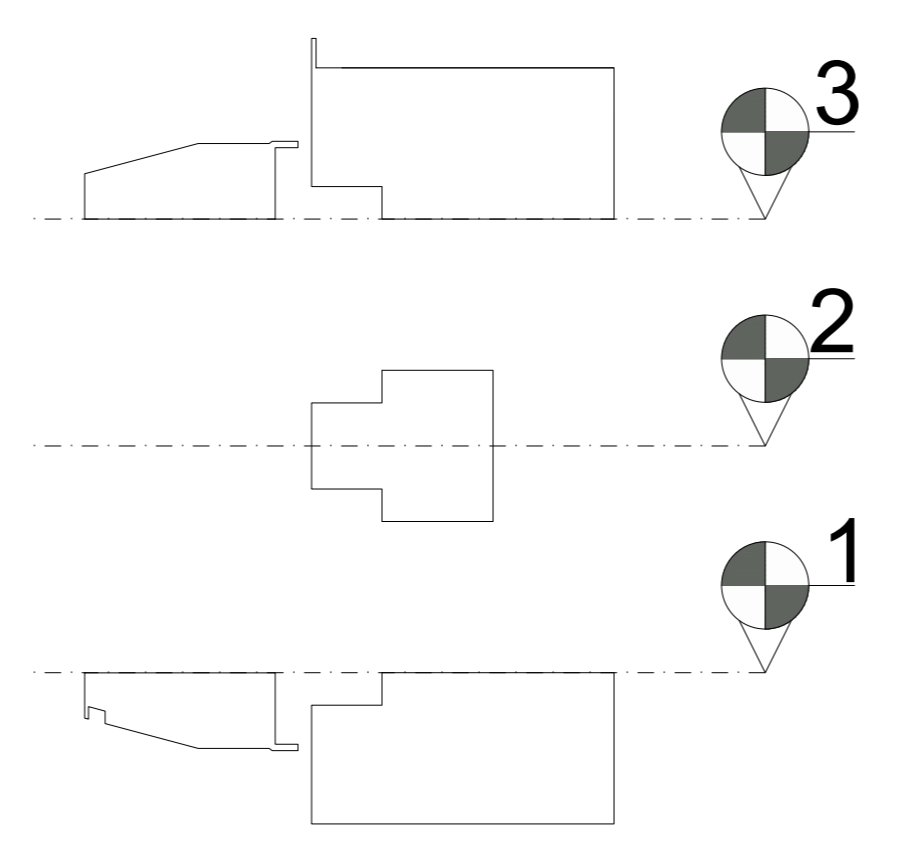


NOTE: Louvre door to be added - IN ABEYANCE



FOR CONTINUATION, PLEASE SEE DRAWING NO. KXC-P2-001-Y-LFL-21-307

LEVELS (where not repeated, the level is the same as adjoining panels)			
FLOOR	TOP OF TRANSOM - 1	TRANSOM AXIS - 2	BOTTOM OF TRANSOM - 3
L08	+ 62.225	+ 63.425	+ 64.625
L08 - CORNER	+ 61.489	+ 62.175	+ 64.625
L09	+ 66.100	+ 67.278	+ 68.445
L09 - CORNER	+ 65.364	+ 66.050	+ 68.455
L09M	+ 69.305	n/a	+ 71.535



PLEASE NOTE: Louvres to suit Architectural intent. Please refer to detail sections for further information and comments, not elevation drawings.

PLEASE NOTE: Sections reference number and position updated.

PLEASE NOTE: Dimensions and position of penetration holes through the facade panels updated.

- Precast stub penetration - structural opening
- Precast outline in front of facade panels
- Drainage chute

CONSTRUCTION

02.01.2020	Maria Ganarini	Please see clouded items	C01
06.01.2020	Marcin Rudzinski	APPROVED	C01
06.01.2020	Andrea Bartolome	TECHNICALLY CHECKED	C01
30.09.2019	Maria Ganarini	DRAFTED	00
DATE	NAME	PROCESS	INDEX
		OBJECT / PRODUCT	SCALE
Lindner Facades Ltd +44 (0)2082 46-63 00 www.Lindner-Group.com		Kings Cross - P2	1:45
facades		TITLE	SIZE
LS19	Elevation South - L08-L09M	DIN A0	
901957		MATERIAL CATEGORY	
40	10		

KXC-P2-001-Y-LFL-21-308 C01