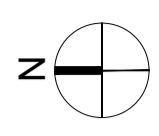


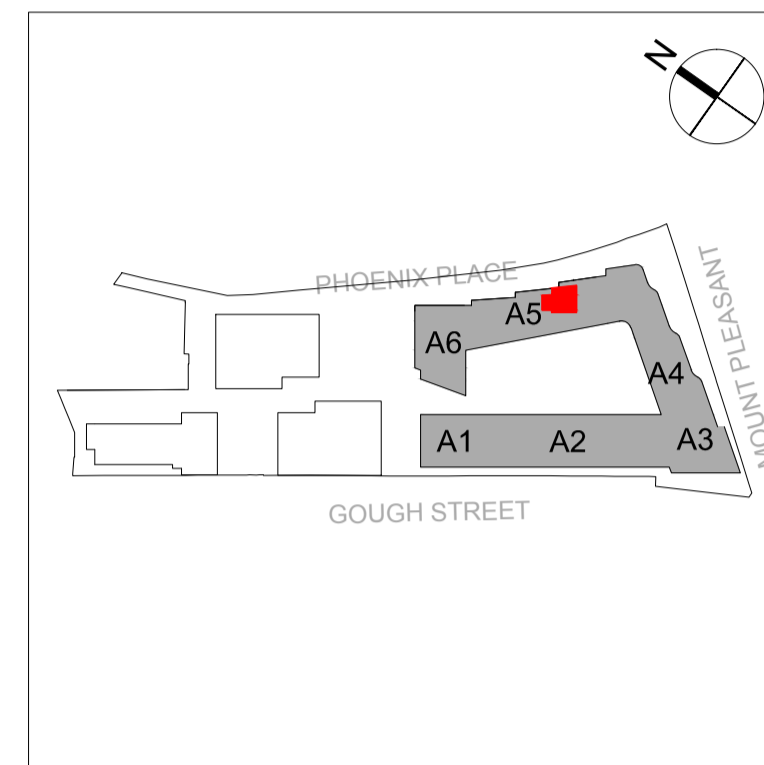
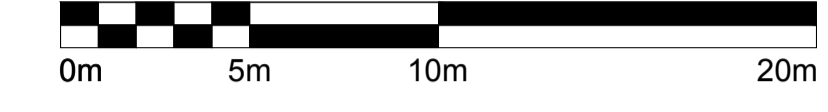
Contractors and consultants are not to scale dimensions from this drawing



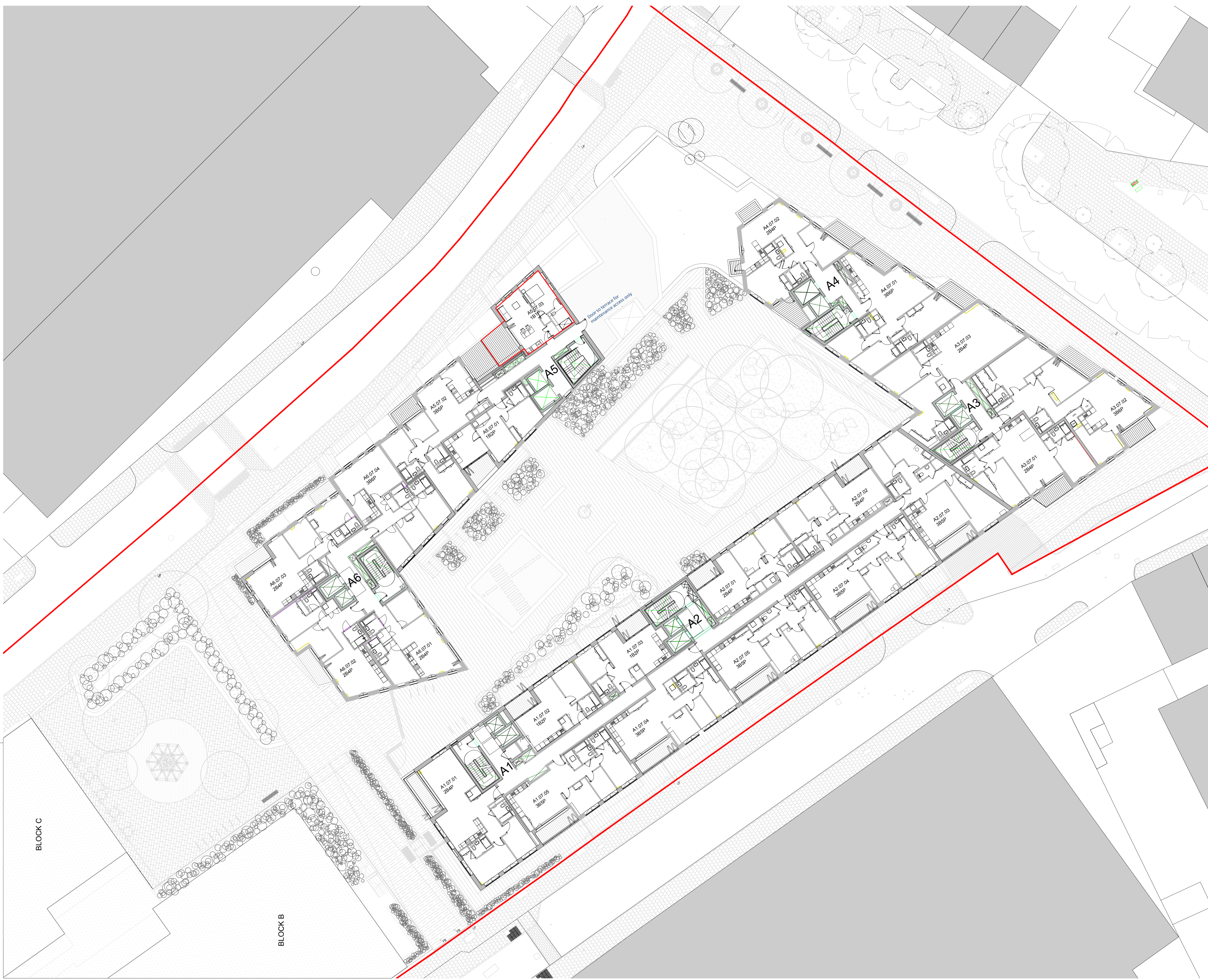
Reproduced by permission of Ordnance Survey on behalf of HMSO  
© CROWN COPYRIGHT and database right 2008 All rights reserved  
Ordnance Survey Licence number AL 1000 22432 Broadway Malyan Limited

The survey information shown on this drawing is based on a topographical survey prepared by a third party and Broadway Malyan Limited accept no responsibility for the accuracy or completeness of the survey.

Please note: Drawings to read in conjunction with the associated Design & Access Statement, associated documents and landscape information.



Application Area



Revision	Date	Description
P05	20-02-10	Full planning Application - Amenity Converted to 1Bed
P04	18-04-27	Non-Material Amendments
P03	18-04-23	Non-Material Amendments
P02	18-03-28	Non-Material Amendments
P01	18-02-09	Non-Material Amendments

### BroadwayMalyan<sup>BM</sup>

Eastgate, 2 Castle Street  
Castlefield, Manchester  
M3 4LZ

T: +44 (0)161 819 2277  
F: +44 (0)161 819 2332  
E: [Man@BroadwayMalyan.com](mailto:Man@BroadwayMalyan.com)  
[www.BroadwayMalyan.com](http://www.BroadwayMalyan.com)

Client  
**Taylor Wimpey Central London**

Project  
**RMG Mount Pleasant  
Phoenix Place Plot P1**

Description  
**Block A Proposed Level 06 Plan  
Level +36.575**

Status	Scale	Drawn By	Date
<b>FULL PLANNING APPLICATION</b>	1:200@A1	LW	FEB 18
Job Number	Drawing Number	Revision	
32875	P-03-006	P05	

BLOCK C

BLOCK B