

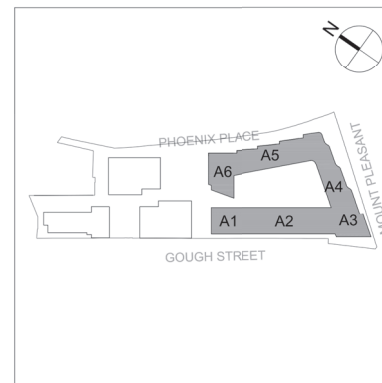
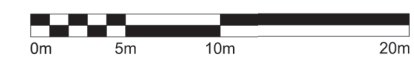
Contractors and consultants are not to scale dimensions from this drawing



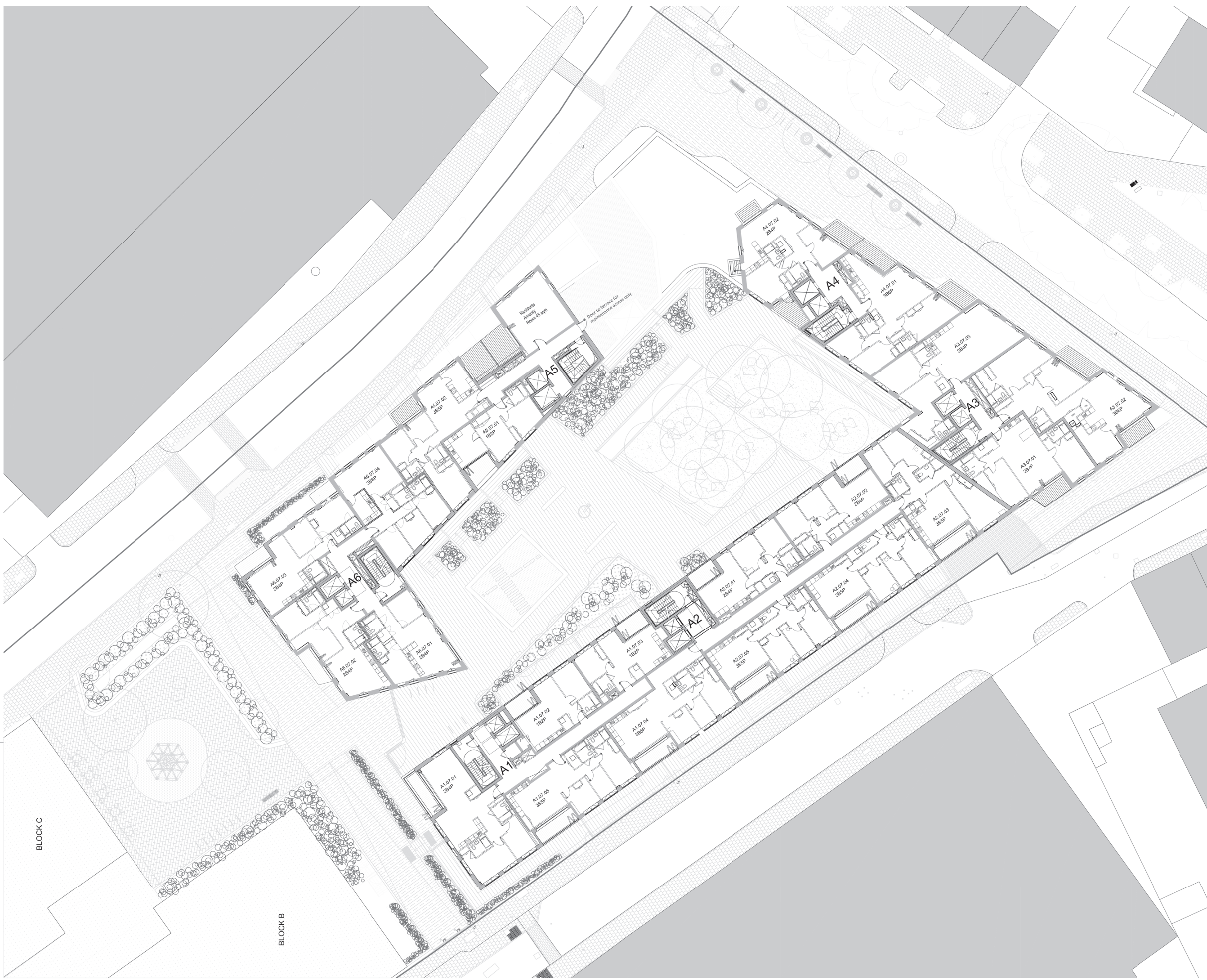
Reproduced by permission of Ordnance Survey on behalf of HMSO © CROWN COPYRIGHT and database right 2008 All rights reserved Ordnance Survey Licence number AL 1000 22432 Broadway Malyan Limited

The survey information shown on this drawing is based on a topographical survey prepared by a third party and Broadway Malyan Limited accept no responsibility for the accuracy or completeness of the survey.

Please note: Drawings to read in conjunction with the associated Design & Access Statement, associated documents and landscape information.



Application Area



P04	18-04-27	Non-Material Amendments
P03	18-04-23	Non-Material Amendments
P02	18-03-28	Non-Material Amendments
P01	18-02-09	Non-Material Amendments
Revision	Date	Description

BroadwayMalyan^{BM}

Eastgate, 2 Castle Street
Castlefield, Manchester
M3 4LZ

T: +44 (0)161 819 2277
F: +44 (0)161 819 2332
E: Man@BroadwayMalyan.com
www.BroadwayMalyan.com

Client
Taylor Wimpey Central London

Project
RMG Mount Pleasant
Phoenix Place Plot P1

Description
Block A Proposed Level 06 Plan
Level +36.575

NON-MATERIAL AMENDMENTS

Scale	1:200@A1	Drawn By	LW	Date	FEB 18
Job Number	32875	Drawing Number	P-03-006	Revision	P04

BLOCK C

BLOCK B