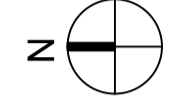
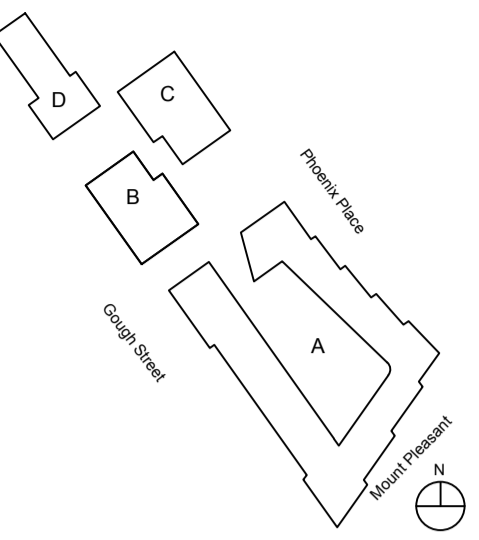


Contractors and consultants are not to scale dimensions from this drawing



Reproduced by permission of Ordnance Survey on behalf of HMSO
© CROWN COPYRIGHT and database right 2008 All rights reserved
Ordnance Survey Licence number AL 1000 22432 Broadway Malyan Limited

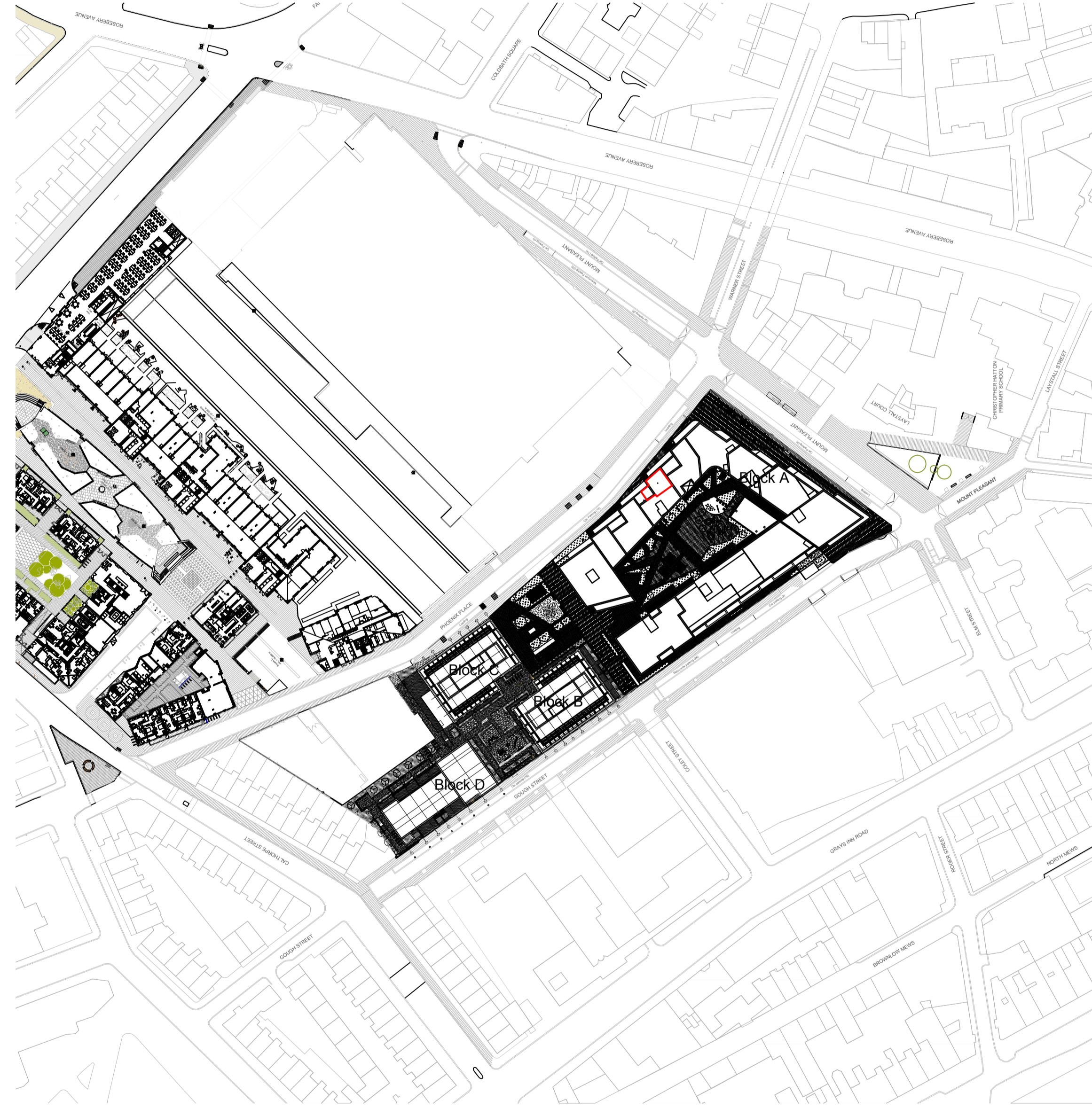
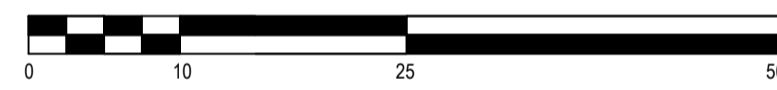
The survey information shown on this drawing is based on a topographical survey prepared by a third party and Broadway Malyan Limited accept no responsibility for the accuracy or completeness of the survey.

Please note: Drawings to read in conjunction with the associated Design & Access Statement, associated documents and landscape information.

KEY

Application Area

Scale Bar (1:500):



Revision	Date	Description
1	12.02.20	First Issue

BroadwayMalyan^{BM}

Riverside House
Southwark Bridge Road
London
SE1 9HA

T: +44 (0)20 7261 4200
F: +44 (0)20 7261 4300
E: Lon@BroadwayMalyan.com

www.BroadwayMalyan.com

Client
Taylor Wimpey, Central London

Project
**Mount Pleasant Phase 2
Mount Pleasant, London**

Description
Site Location Plan

Status
FULL PLANNING APPLICATION

Scale	Drawn By	Date
1: 1250	@A1 JP	12.02.20
Job Number	Drawing Number	Revision
32875	P-02-099	-