

# Air Conditioning

## Product Information

**PFFY-P-VLEM-E**  
Floor Standing Exposed  
Indoor Unit

Making a  
World of  
Difference

CITY MULTI



A compact cased unit providing simple, effective air conditioning in perimeter zones. The unit is easy to install, and at only 220mm deep offers an unobtrusive method of delivering a highly efficient air conditioning performance.

### Key Features

- Remote controller can be incorporated into the main unit
- Perimeter air conditioning for retrofit applications with low ceiling void



Cooling | Heating | Ventilation | Controls

# Air Conditioning

## Product Information

**PFFY-P-VLEM-E**  
Floor Standing Exposed  
Indoor Unit

Making a  
World of  
Difference

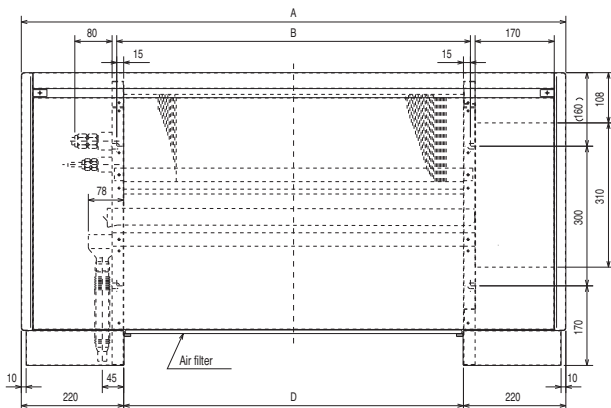


INDOOR UNITS		PFFY-P20VLEM-E	PFFY-P25VLEM-E	PFFY-P32VLEM-E	PFFY-P40VLEM-E	PFFY-P50VLEM-E	PFFY-P63VLEM-E
CAPACITY (kW)	Heating (nominal)	2.5	3.2	4.0	5.0	6.3	8.0
	Cooling (nominal)	2.2	2.8	3.6	4.5	5.6	7.1
	UK Heating	2.5	3.2	4.0	5.0	6.3	8.0
	UK Total Cooling - Hi (Sensible)	2.00 (1.60)	2.50 (1.90)	3.20 (2.40)	4.10 (3.00)	5.00 (3.80)	6.40 (4.70)
	UK Total Cooling - Mi2	-	-	-	-	-	-
POWER INPUT (kW)	Heating (nominal)	0.04	0.04	0.06	0.065	0.085	0.10
	Cooling (nominal)	0.04	0.04	0.06	0.065	0.085	0.10
	UK Total Cooling - Lo	1.92	2.40	2.97	3.88	4.81	5.93
AIRFLOW (l/s)	Lo-Hi	92-108	92-108	117-150	150-183	200-233	200-258
	SOUND PRESSURE LEVEL (dBA) Lo-Hi	34-40	34-40	35-40	38-43	38-43	40-46
WEIGHT (kg)		23	23	25	26	30	32
DIMENSIONS (mm)	Width	1050	1050	1170	1170	1410	1410
	Depth	220	220	220	220	220	220
	Height	630	630	630	630	630	630
ELECTRICAL SUPPLY		220-240v, 50Hz	220-240v, 50Hz	220-240v, 50Hz	220-240v, 50Hz	220-240v, 50Hz	220-240v, 50Hz
PHASE		Single	Single	Single	Single	Single	Single
RUNNING CURRENT (A) Heating / Cooling		0.19 / 0.19	0.19 / 0.19	0.29 / 0.29	0.32 / 0.32	0.40 / 0.40	0.46 / 0.46
FUSE RATING (BS88) - HRC (A)		6	6	6	6	6	6
MAINS CABLE No. Cores		3	3	3	3	3	3

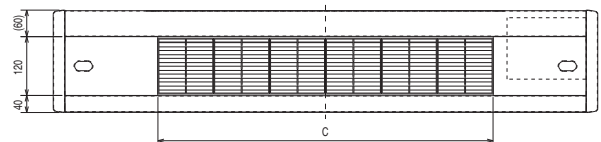
### PRODUCT DIMENSIONS

### PFFY-P20/25/32/40/50/63VLEM-E

Front View



Upper View



Model	A	B	C	D
PFFY-P20VLEM-E	1050	640	600	610
PFFY-P25VLEM-E	1050	640	600	610
PFFY-P32VLEM-E	1170	760	720	730
PFFY-P40VLEM-E	1170	760	720	730
PFFY-P50VLEM-E	1410	1000	960	970
PFFY-P63VLEM-E	1410	1000	960	970



Telephone: 01707 282880  
email: [air.conditioning@meuk.mee.com](mailto:air.conditioning@meuk.mee.com)  
web: [airconditioning.mitsubishielectric.co.uk](http://airconditioning.mitsubishielectric.co.uk)

UNITED KINGDOM Mitsubishi Electric Europe Living Environment Systems Division  
Travellers Lane, Hatfield, Hertfordshire, AL10 8XB, England General Enquiries Telephone: 01707 282880 Fax: 01707 278881

IRELAND Mitsubishi Electric Europe Westgate Business Park, Ballymount, Dublin 24, Ireland  
Telephone: Dublin (01) 419 8800 Fax: Dublin (01) 419 8890 International code: (003531)

Country of origin: United Kingdom - Japan - Thailand - Malaysia. ©Mitsubishi Electric Europe 2017. Mitsubishi and Mitsubishi Electric are trademarks of Mitsubishi Electric Europe B.V. The company reserves the right to make any variation in technical specification to the equipment described, or to withdraw or replace products without prior notification or public announcement. Mitsubishi Electric is constantly developing and improving its products. All descriptions, illustrations, drawings and specifications in this publication present only general particulars and shall not form part of any contract. All goods are supplied subject to the Company's General Conditions of Sale, a copy of which is available on request. Third-party product and brand names may be trademarks or registered trademarks of their respective owners.

**Note:** The fuse rating is for guidance only. Please refer to the relevant databook for detailed specification. It is the responsibility of a qualified electrician/electrical engineer to select the correct cable size and fuse rating based on current regulation and site specific conditions. Mitsubishi Electric's air conditioning equipment and heat pump systems contain a fluorinated greenhouse gas, R410A (GWP:2088), R32 (GWP:675), R407C (GWP:1774) or R134a (GWP:1430). \*These GWP values are based on Regulation (EU) No 517/2014 from IPCC 4th edition. In case of Regulation (EU) No.626/2011 from IPCC 3rd edition, these are as follows: R410A (GWP:1975), R32 (GWP: 550), R407C (GWP:1650) or R134a (GWP:1300).



[www.greengateway.mitsubishielectric.co.uk](http://www.greengateway.mitsubishielectric.co.uk)  
Mitsubishi Electric UK's commitment  
to the environment

Follow us @meuk\_Jes  
Follow us @green\_gateway

Mitsubishi Electric  
Living Environmental Systems UK

mitsubishielectric2

[thehub.mitsubishielectric.co.uk](http://thehub.mitsubishielectric.co.uk)

Effective as of September 2017