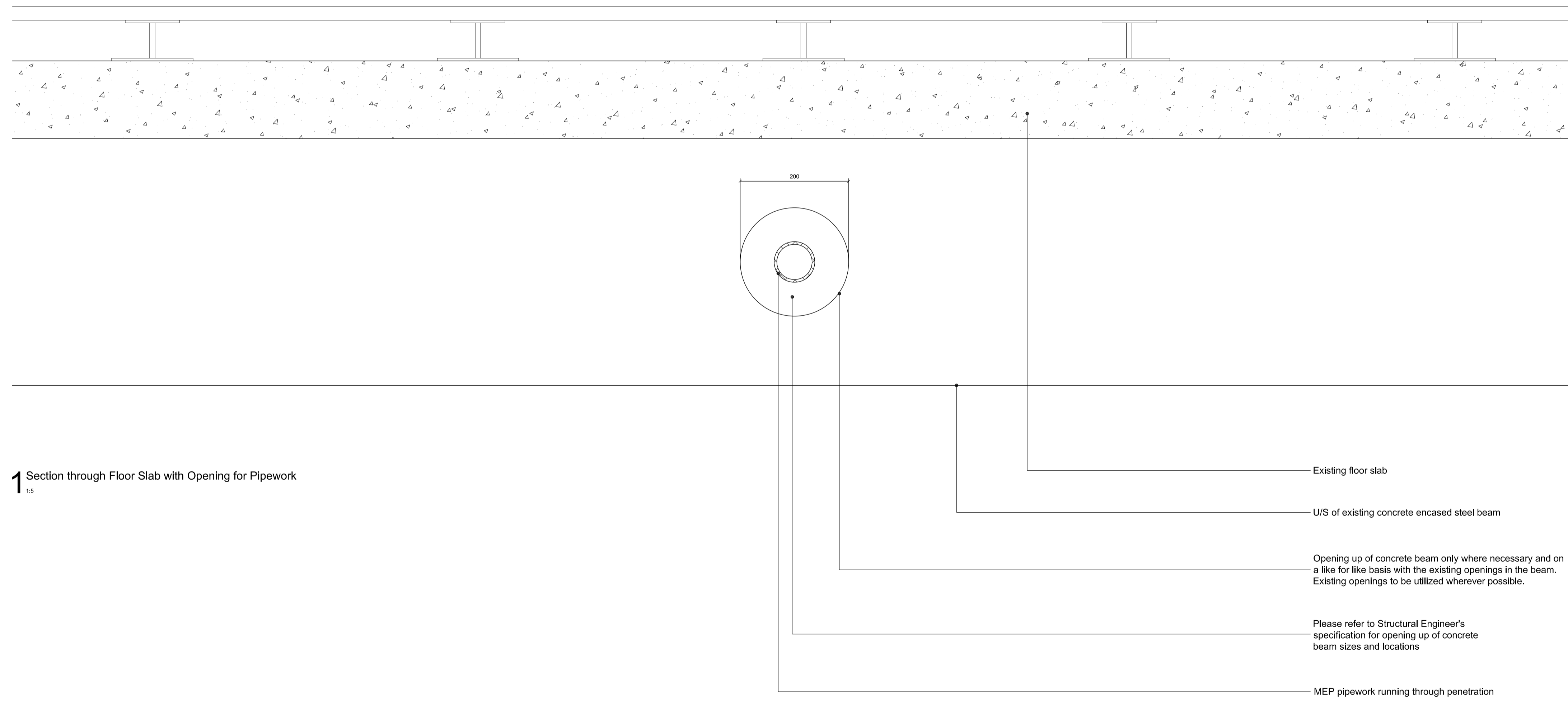
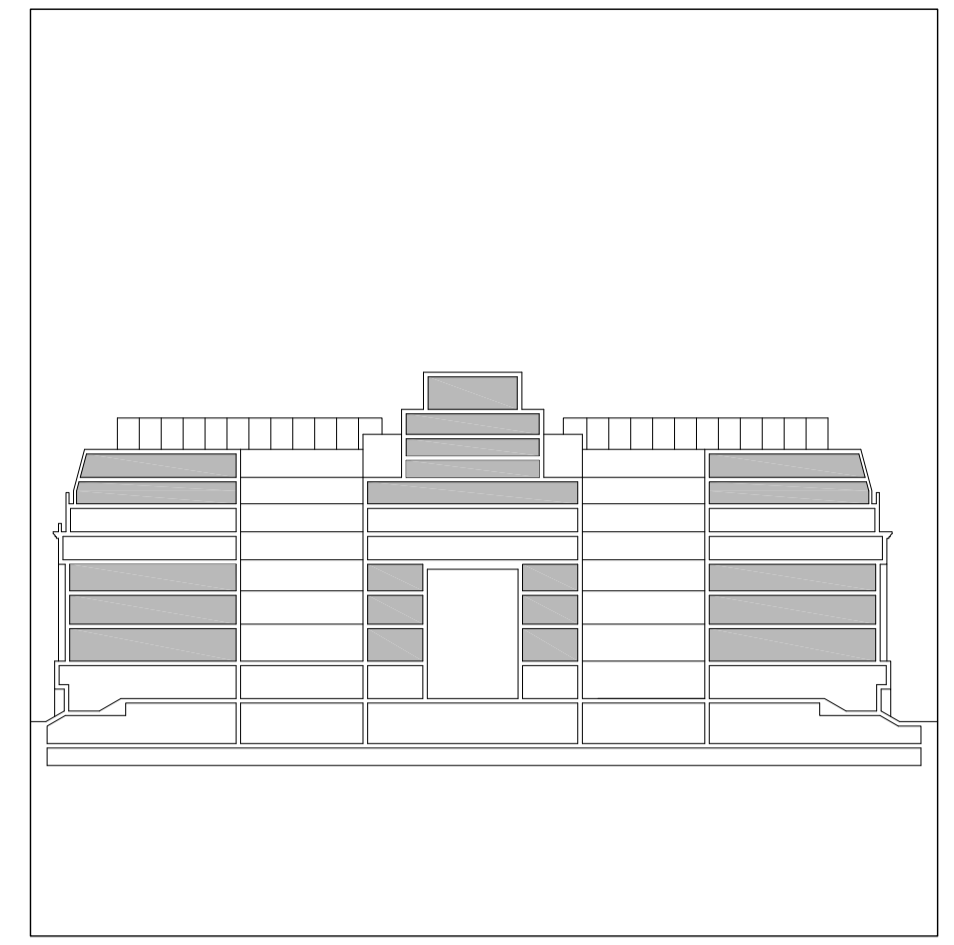


Do not scale from drawings
 All dimensions are in mm unless otherwise stated
 All dimensions to be verified on site before proceeding with the work
 Any discrepancies to be notified in writing to Architect immediately
 All boundaries indicative only and to be confirmed by others



1 Section through Floor Slab with Opening for Pipework
 1:5

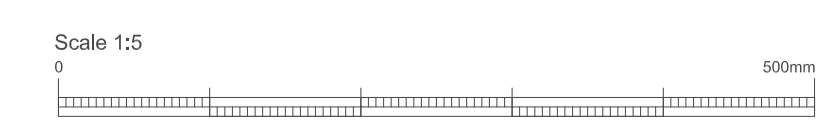
Existing floor slab

U/S of existing concrete encased steel beam

Opening up of concrete beam only where necessary and on a like for like basis with the existing openings in the beam. Existing openings to be utilized wherever possible.

Please refer to Structural Engineer's specification for opening up of concrete beam sizes and locations

MEP pipework running through penetration



REV	DATE	NOTES	INT
-	25.02.20	Issued for Planning	WP

PLANNING

HUTCHINSON & PARTNERS

3,14 The Record Hall, 16-16A Baldwin's Gardens, London, EC1N 7RJ
 L 020 3176 8196 e. info@hutchinsonandpartners.com w. hutchinsonandpartners.com

JOB TITLE
LABS, Victoria House, Camden

DRAWING TITLE / LOCATION
Proposed Detail of Opening through Existing Concrete Encased Steel Beams

DRAWN BY	CHECKED	SCALE	STATUS
WP	JB	1:5 at A1/ 1:10 at A3	PLANNING
PROJECT	DRAWING NO	REVISION	
19023	01 AL 5730 902	-	

CLIENT

© 2020 HUTCHINSON & PARTNERS Limited