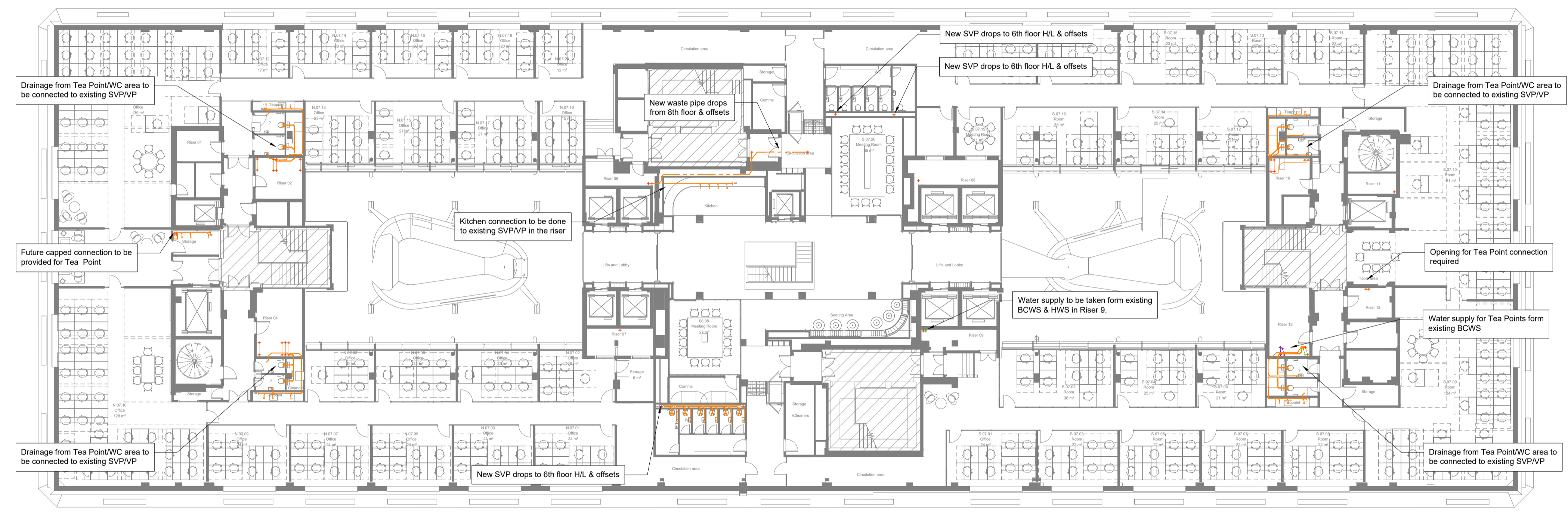


- The building services design information indicated on this drawing is to Developed Design (feasible-generic) Stage as defined in BSRIA BG/6 2018.
- This drawing package is intended to indicate:
  - Approximate locations of horizontal & vertical service runs.
  - Sizes and locations of main plant and distribution systems.
  - Key principles of systems serving the building through typical room/area details.
- Sizes, duties and quantities indicated are provisional only and subject to development during Technical Design stage.
- The indicated design of services entering and leaving risers and vertical drainage penetration locations are based on the limited record information available at the time of design. Locations of services entering and leaving risers and drainage services dropping to floor below, and the associated builderswork openings, are therefore subject to variation and further development at the next design stage.
- All services installations will need to be supported from the existing structure and fixings will need to be made to the existing slab or steelwork to support interim support systems to support the services installation. This is as per the existing installation.
- BCWS and HWS are to connect into existing pipework systems where required. Water services to connect to existing water supply in riser and distribute at high level.
- Location and condition of existing soil vent pipes are subject to survey.
- Drainage from FCU/AHU to be pumped, distributed at high level and connect to existing condensate stacks.

- Legend**
- Below floor
  - Low level
  - - - High Level
  - Drainage services
  - Vent services
  - Condensate pipework
  - ⬇ Pipe drop
  - ⬆ Pipe rise
  - H/L High Level
  - L/L Low Level
  - SVP Soil Vent Pipe
  - WHB Wash Hand Basin
  - WC Water Closet
  - T/A To above
  - F/B From below
  - RE Rodding eye
  - SS Stub Stack
  - VP Vent Point



P1	06/03/2020	Listed Building Application	LB	MB
Rev	Date	Description		Cad

Architect  
**HUTCHINSON & PARTNERS**

Client  
**LABTECH**

Project  
**Victoria House Phase 2**

Drawing Title  
**Public Health Services  
Drainage & Water Services  
Layout  
Seventh Floor**



Building Services Engineering | Sustainability | Acoustics  
ScotchPartners  
157 Farringdon Road, London EC1R 3AD  
020 3544 5400  
www.scotchpartners.com

Issue	Stage 3			
Date	Jan 20	Scale	@ A1	1:200
Drawn By	KS	Checked By	IO	
Drawing No.	<b>5228-SP-P2-07-DR-P-400</b>			Rev <b>P1</b>