



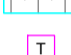
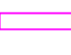





Notes

- This drawing package is to Developed Design stage as defined in BSRIA BG6 2018.
- This drawing package is intended to indicate:
 - Approximate locations of horizontal & vertical service runs.
 - Sizes and locations of main plant and distribution systems.
 - Key principles of systems serving the building through typical room/area details.
- Sizes, duties and quantities indicated are provisional only and subject to development during Technical Design stage.
- The indicated design of services entering and leaving risers is based on the limited record information available at the time of design.
- Locations of services entering and leaving risers and the associated builderswork openings are therefore subject to variation and further development at the next design stage.
- All services installations will need to be supported from the existing structure and fixings will need to be made to the existing slab or steelwork to support interim support systems to support the services installation. This is as per the existing installation.

Legend

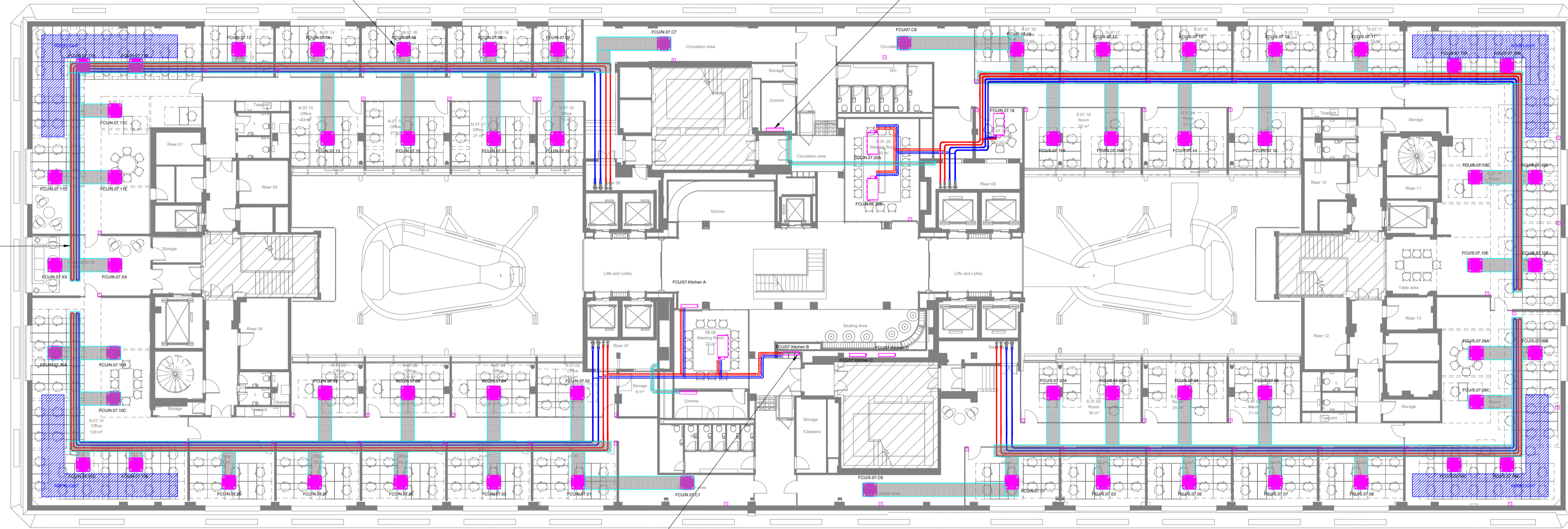
-  Four-pipe cassette fan coil unit
-  Four-pipe fan coil unit
-  Area out of scope
-  Low temperature hot water flow and return pipework
-  Chilled water flow and return pipework
-  Pipework tray
-  Room temperature controller
-  Vertical (concealed) fan coil unit
-  Wall mounted fan coil unit

4 pipe cassette fixed to underside of 900mm wide galvanised steel tray.

Wall mounted DX unit serving Comms room. Location of external unit to be determined

Pipeworks routes to be confirmed with client and architects. Routing via trays or through castellated beams.

Vertical concealed ducted FCU within bespoke joinery. LTHW and CHW pipework drops from high level within joinery. Pipeworks routes TBA with client and architect.



Rev	Date	Description	By	CHK

Architect
HUTCHINSON & PARTNERS

Client
LABTECH

Project
Victoria House Phase 2

Drawing Title
**Mechanical Services
Heating & Cooling
Layout
Seventh Floor**

ScotchPartners

Building Services Engineering | Sustainability | Acoustics
Scriptor Court
157 Farringdon Road
London EC1R 3AD
020 3544 5400
www.scotchpartners.com

Issue **Stage 3**

Date Feb 20 Scale @ A1 1:200

Drawn By MH Checked By IO

Drawing No. **5228-SP-P2-07-DR-M-420** Rev **P1**