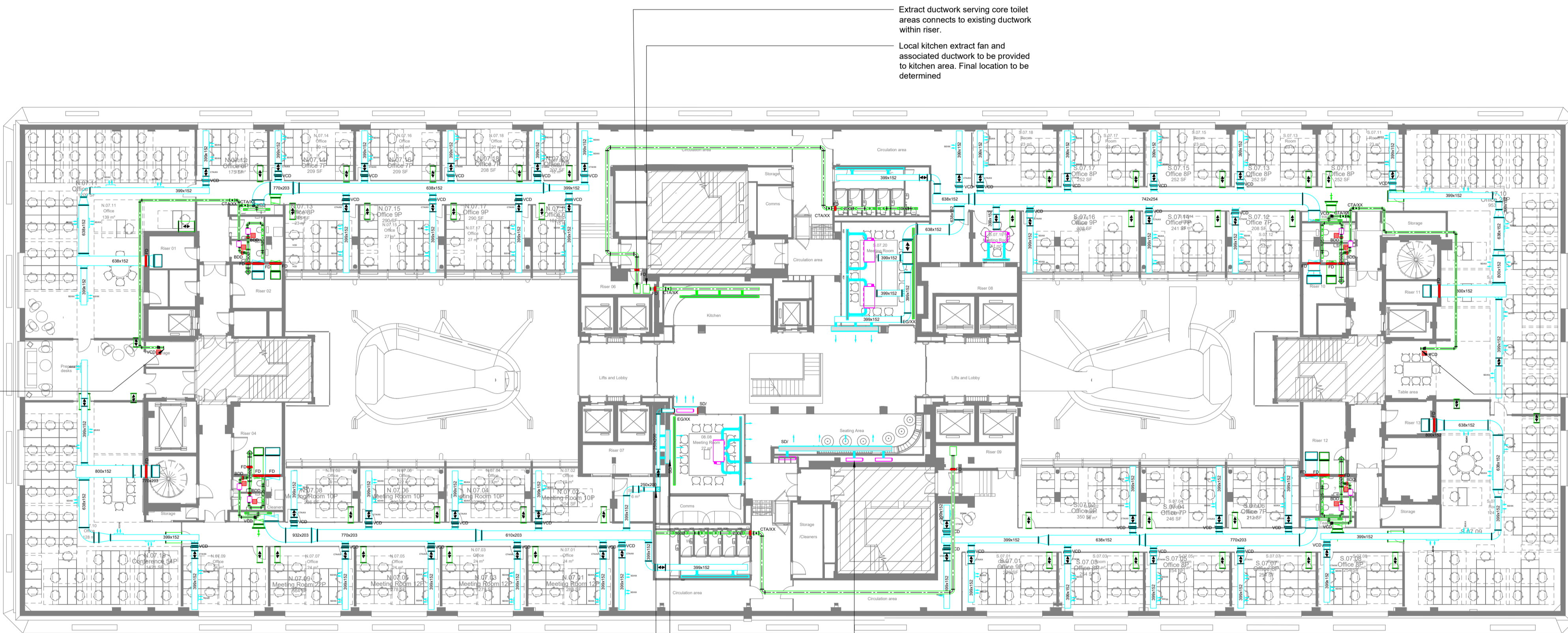


Notes

1. This drawing package is to Developed Design stage as defined in BSRIA BG6 2018.
2. This drawing package is intended to indicate:
 - 2.1. Approximate locations of horizontal & vertical service runs.
 - 2.2. Sizes and locations of main plant and distribution systems.
 - 2.3. Key principles of systems serving the building through typical room/area details.
3. Sizes, duties and quantities indicated are provisional only and subject to development during Technical Design stage.
4. All exposed ductwork to be flat oval except where stated by size.
5. All exposed ductwork to be powder coated white.
6. All fire dampers to be provided with access panel where located above suspended ceiling
7. The indicated design of services entering and leaving risers is based on the limited record information available at the time of design.
8. Locations of services entering and leaving risers and the associated builderswork openings are therefore subject to variation and further development at the next design stage.
9. All services installations will need to be supported from the existing structure and fixings will need to be made to the existing slab or steelwork to support interim support systems to support the services installation. This is as per the existing installation.

Legend

- Horizontal chassis type fan coil unit
- Vertical chassis type fan coil unit
- Inline extract fan
- Supply ductwork
- Extract ductwork
- VCD Volume control damper
- FD Fire damper
- Access panel
- Cross talk attenuator
- Attenuator
- Duct mounted supply diffuser
- Disc valve
- Plaster in linear slot grille with plenum
- Wall mounted linear slot supply diffuser
- BDD Back draught damper



Extract ductwork serving core toilet areas connects to existing ductwork within riser.
Local kitchen extract fan and associated ductwork to be provided to kitchen area. Final location to be determined

Capped ductwork provided for future fit-out of tea point

Capped ductwork provided for future fit-out of tea point

Vertical concealed FCU serving breakout space concealed within bespoke joinery
Linear bar supply diffuser at HL with wall
Supply ductwork drops from HL to L/L and runs within within void behind wall.

Rev	Date	Description	Chk

Architect
HUTCHINSON & PARTNERS

Client
LABTECH

Project
Victoria House Phase 2

Drawing Title
**Mechanical Services
Ventilation
Layout
Seventh Floor**



Building Services Engineering | Sustainability | Acoustics
Scriptor Court
157 Farringdon Road
London EC1R 3AD
020 3544 5400
www.scotchpartners.com

Copyright reserved. Work is signed dimensions only. Dimensions to be reported before proceeding.

Issue	Date	Scale	Rev

Issue **Stage 3**
Date Feb 20 Scale @ A1 1:200
Drawn By KS Checked By IO
Drawing No. **5228-SP-P2-07-DR-M-410** Rev **P1**