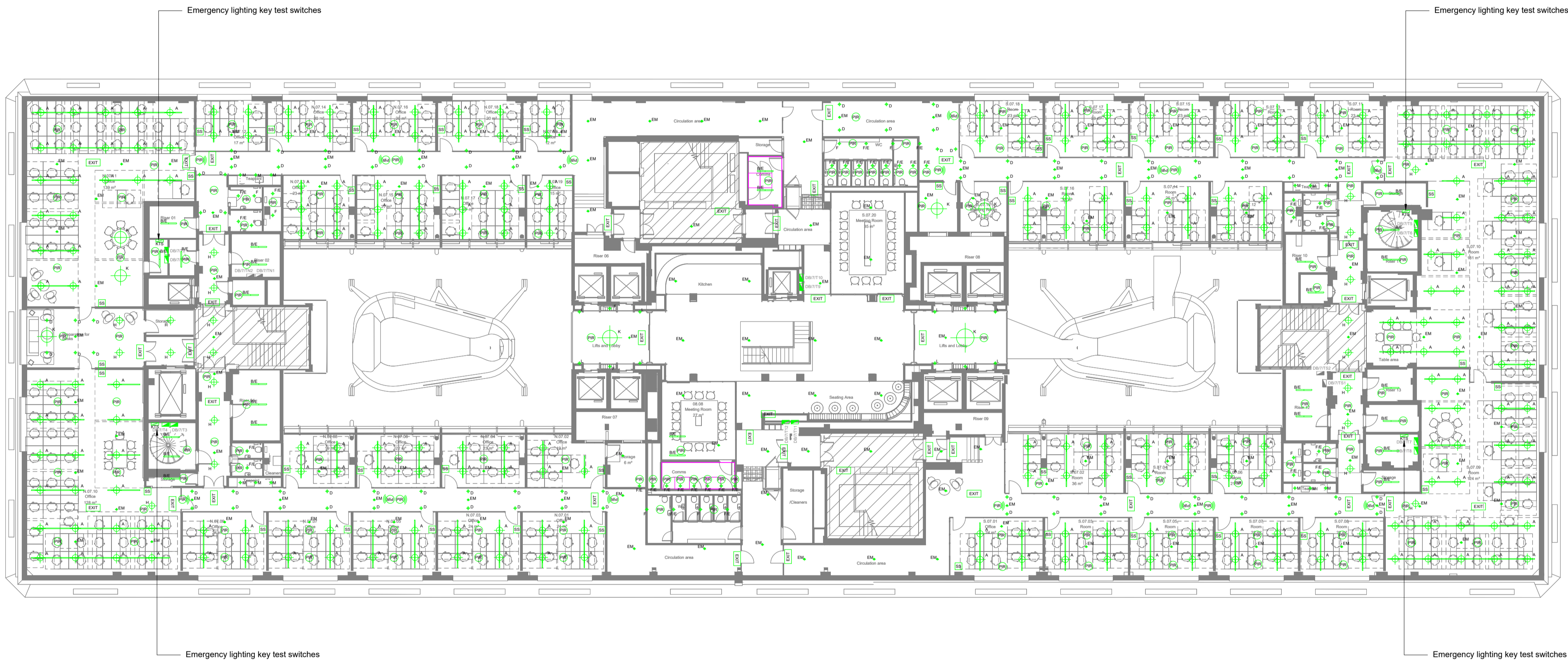


Notes

- This drawing package is to Developed Design stage as defined in BSRIA BG/6 2018.
- This drawing package is intended to indicate:
  - Approximate locations of horizontal & vertical service runs.
  - Sizes and locations of main plant and distribution systems.
  - Key principles of systems serving the building through typical room/area details.
- Sizes, duties and quantities indicated are provisional only and subject to development during Technical Design stage.
- The proposed MEPH works to these areas are considered to be fit-out installations and are not considered to impact on the Heritage aspects of the work areas of the building.
- The lighting within these Lounge and Break Out areas will be decorative in nature.
- Typically a plasterboard suspended ceiling will be installed with access hatches provided to equipment that requires maintenance.
- Wiring will be run concealed within the ceiling void.
- It is anticipated that lighting will comprise of the following:
  - Decorative wall light
  - Recessed downlights
  - Suspended decorative pendants
  - Floor standing lamp standards
- Lighting control will be via ceiling mounted PIRs and local dimmer switches.
- Emergency lighting will be provided via recessed LED downlights and EXIT signage
- Wiring will be run concealed within the ceiling void.
- Other ancillary electrical equipment may be required. Details to be confirmed.
- All services installations will need to be supported from the existing structure and fixings will need to be made to the existing slab or steelwork to support interim support systems to support the services installation. This is as per the pre-existing installation.



Legend

- A Suspended LED Cylinder panel luminaire
- B Surface mounted linear LED luminaire
- C Acoustic dome LED luminaire
- D Suspended LED cylinder downlight luminaire To be flex suspended and connected via a sliding plug in ceiling rose or equivalent.
- EM Surface mounted emergency LED with integral 3hr battery
- F Surface recessed LED downlight luminaire
- G Track mounted / suspended pendant LED spotlight luminaire
- H Pendant LED luminaire
- J Globe LED wall luminaire
- K Suspended LED ring luminaire
- L Wall mounted LED luminaire
- M LED spot/downlight luminaire
- N LED feature luminaire
- PIR PIR presence detector
- EXIT Illuminated emergency exit sign

Rev	Date	Description	LB	MB
P1	06/03/2020	Listed Building Application		

Architect  
**HUTCHINSON & PARTNERS**

Client  
**LABTECH**

Project  
**Victoria House Phase 2**

Drawing Title  
**Electrical Services  
 Lighting  
 Layout  
 Seventh Floor**



Building Services Engineering | Sustainability | Acoustics  
 Scripior Court  
 107 Farringdon Road  
 London EC1R 3AD  
 020 3544 5400  
 www.scotchpartners.com

Copyright reserved. Work to signed dimensions only. Discrepancies to be reported before proceeding.

Issue	Date	Scale	Checked By
Stage 3	Jan 20	@ A1	1:200
Drawn By	LB	Checked By	MB

Drawing No. **5228-SP-P2-07-DR-E-450** Rev **P1**